

JOOAN Large White-solar Dual Lens

JOOAN Wireless Security Camera User Manual

Model: Large White-solar Dual Lens

Brand: JOOAN

1. INTRODUCTION

Thank you for choosing the JOOAN Wireless Security Camera. This solar-powered, dual-lens outdoor camera provides comprehensive surveillance with advanced features such as 2.4G WiFi connectivity, Pan-Tilt-Zoom (PTZ) functionality, two-way audio, and intelligent motion detection. This manual will guide you through the installation, operation, and maintenance of your new security camera to ensure optimal performance and security for your property.



Figure 1.1: JOOAN Wireless Security Camera with integrated solar panel.

Outdoor Solar Battery Camera

Built-in 9000mah Batter



3mp+3mp



PIR Motion Detection



Built-in Battery



Solar



2-way audio



IP66 waterproof



2.4GHz WiFi



Color Night Vision



Figure 1.2: Overview of camera features including HD resolution, PIR motion detection, built-in battery, solar charging, 2-way audio, IP66 waterproof rating, 2.4GHz WiFi, and color night vision.

2. PACKAGE CONTENTS

Please check the package contents carefully. If any items are missing or damaged, please contact customer support.

- JOOAN Wireless Security Camera (with integrated solar panel)
- Mounting Bracket
- Mounting Screws and Wall Plugs
- USB Charging Cable
- User Manual

3. SETUP GUIDE

3.1. Installation Location

Choose a location that provides a clear view of the area you wish to monitor. Ensure the solar panel receives adequate direct sunlight for optimal charging. The camera is IP66 weatherproof, suitable for outdoor use.

3.2. Mounting the Camera

The camera supports ceiling and wall mounting. Use the provided mounting bracket, screws, and wall plugs to securely attach the camera to a stable surface.



Figure 3.1: The camera can be mounted to allow for 330° pan and 90° tilt adjustments.

3.3. Powering On

The camera features a built-in 9000mAh rechargeable battery. Before first use, it is recommended to fully charge the camera using the provided USB cable. The solar panel will continuously charge the battery when exposed to sunlight.



Figure 3.2: The camera is equipped with a high-capacity 9000mAh battery, supported by solar panel charging.

3.4. App Download and Account Creation

Download the official JOOAN app (compatible with Android and iOS devices) from your device's app store. Follow the on-screen instructions to create an account and log in.



Figure 3.3: Access live view and playback remotely via the dedicated mobile application for Android and iOS.

3.5. WiFi Connection

The camera supports 2.4G WiFi only. Ensure your camera is within a strong 2.4G WiFi signal range. Follow the in-app instructions to connect your camera to your home network.

3.6. MicroSD Card Installation (Optional)

The camera supports local storage via a MicroSD card (8GB to 256GB, not included). Locate the MicroSD card slot,

typically under a protective cover, and insert the card with the contacts facing down. Ensure the camera is powered off before inserting or removing the card.

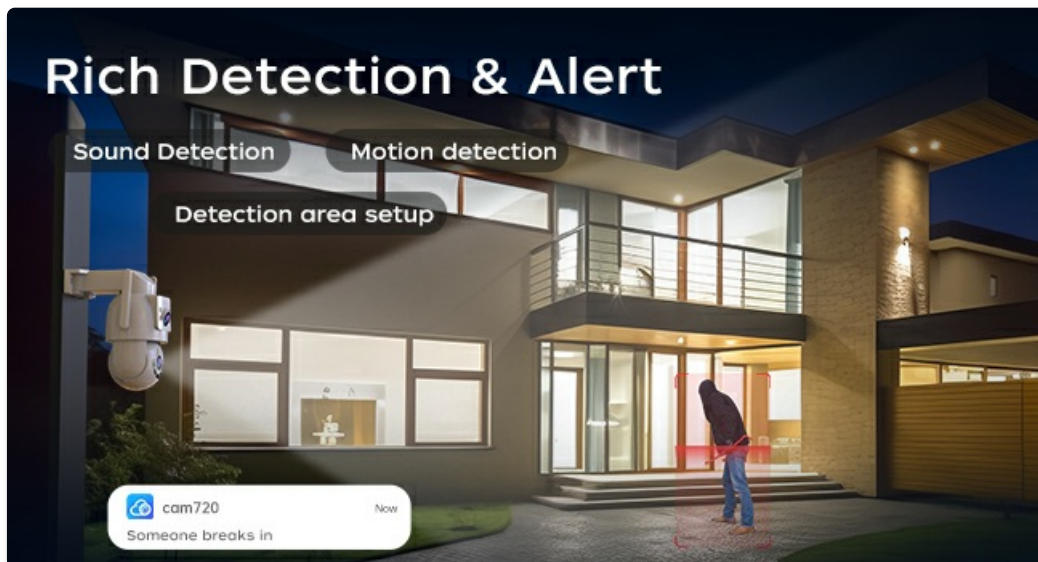


Figure 3.4: The camera supports MicroSD card storage for local recording.

4. OPERATION

4.1. Live View and Playback

Once connected, open the app to view live footage from your camera. You can also access recorded footage stored on the MicroSD card or cloud storage (30-day free trial available).



Figure 4.1: Remote viewing of live video feed on a smartphone.

4.2. Dual Lens Functionality

This camera features two lenses, allowing you to monitor two different areas simultaneously. One lens provides a fixed view, while the other offers PTZ capabilities.



Figure 4.2: The camera's dual lens system allows for simultaneous monitoring of two distinct areas.



Figure 4.3: The dual-lens design eliminates blind spots compared to single-lens cameras.

4.3. PTZ Control and Auto Tracking

Control the pan (330°) and tilt (90°) movements of the movable lens directly from the app to adjust your viewing angle. The auto-tracking feature allows the camera to automatically follow detected motion within its field of view.

Pan 330°Tilt 90°



Figure 4.4: The camera offers a wide range of motion with 330° pan and 90° tilt capabilities.

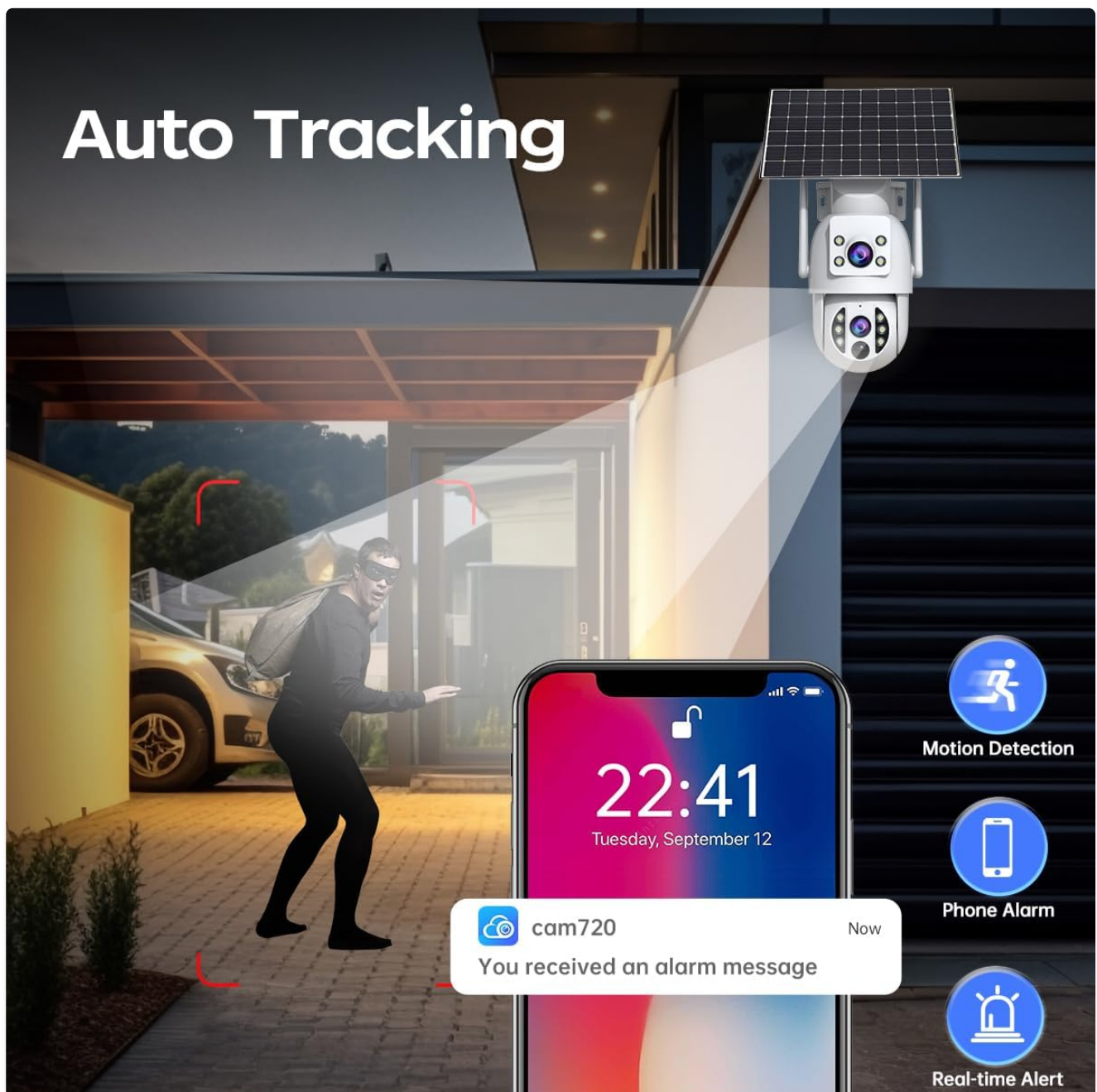


Figure 4.5: The auto-tracking function allows the camera to follow moving objects.

4.4. Motion Detection and Alerts

Configure motion detection settings, including detection areas, sensitivity, and time schedules, within the app. When motion is detected, the camera can trigger alerts such as floodlight activation, siren sound, and push notifications to your smartphone.

PIR Motion Detection



Figure 4.6: The camera utilizes PIR motion detection, waking from sleep mode upon detecting movement.



Figure 4.7: Customizable sound and motion detection with adjustable detection areas.

4.5. Two-Way Audio

Utilize the built-in microphone and speaker for two-way communication. This allows you to speak to visitors or deter intruders directly through the camera via the app.

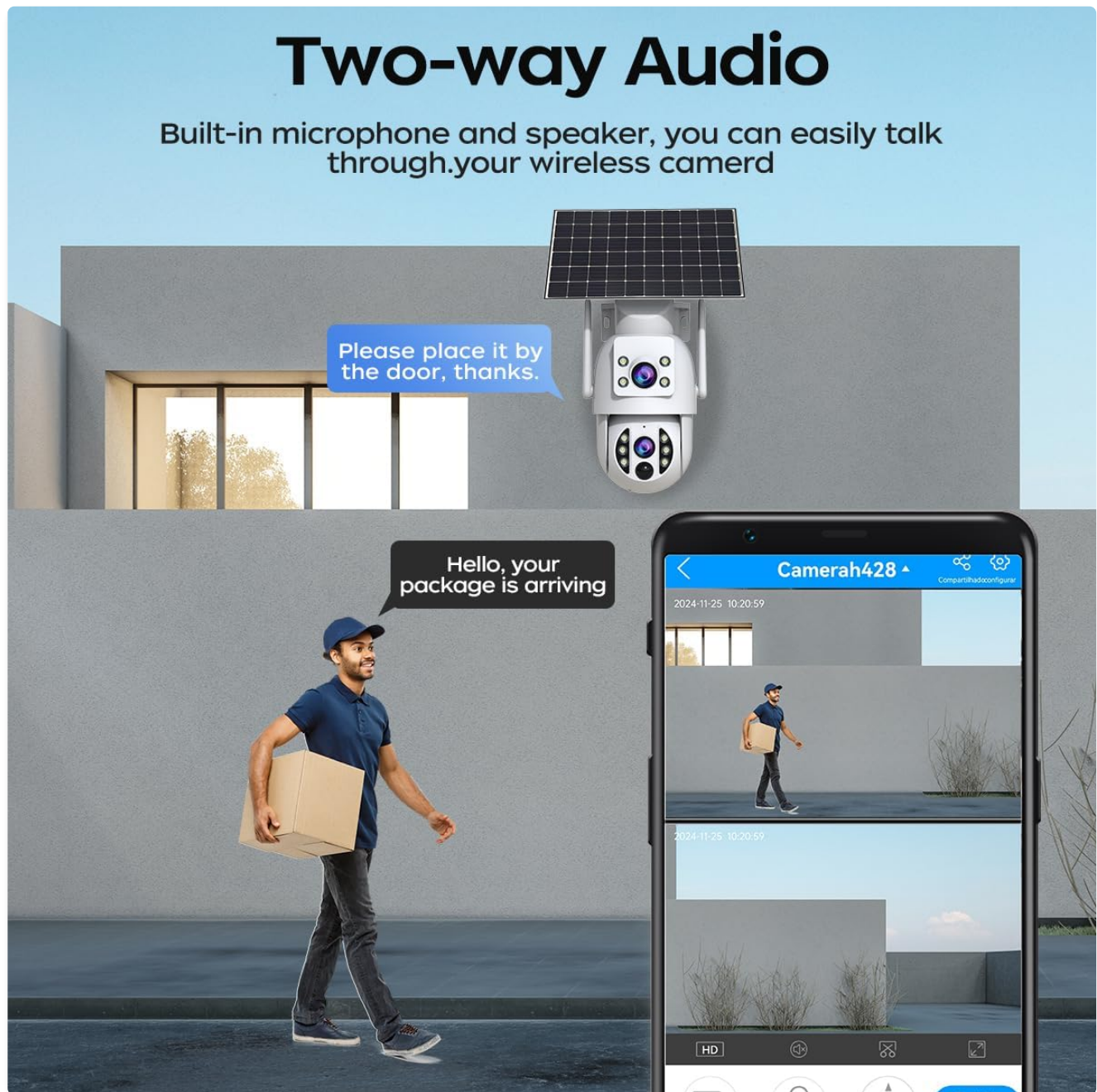


Figure 4.8: The camera supports two-way audio, enabling communication through the device.

4.6. Night Vision Modes

The camera offers multiple night vision modes for clear visibility in low-light conditions:

- **B/W Night:** Standard black and white infrared night vision.
- **Color Night:** Utilizes built-in white LEDs to provide full-color night vision.
- **Smart Color Night:** Automatically switches to color night vision upon detection of motion or a specific event.



Figure 4.9: Choose from B/W night, color night, or smart color night vision modes.

5. MAINTENANCE

5.1. Cleaning

Regularly clean the camera lens and solar panel with a soft, damp cloth to ensure clear image quality and efficient solar charging. Do not use harsh chemicals or abrasive materials.

5.2. Battery Care

The built-in battery is designed for long-term use. For optimal battery life, ensure the solar panel is positioned to receive maximum sunlight. In prolonged periods of low sunlight, you may need to manually charge the camera using the USB cable.

5.3. Weather Protection

The camera is rated IP66 weatherproof, meaning it is protected against dust and powerful water jets. It is designed to operate in temperatures ranging from -25°C to +55°C.



Figure 5.1: The camera is IP66 weatherproof, suitable for various outdoor conditions from -25°C to +55°C.

6. TROUBLESHOOTING

If you encounter issues with your camera, please refer to the following common problems and solutions:

Problem	Possible Cause	Solution
Camera offline / Cannot connect to WiFi	Weak 2.4G WiFi signal; Incorrect WiFi password; Router issues.	Ensure camera is within 2.4G WiFi range. Verify WiFi password. Restart router and camera.
Motion detection not working	Detection sensitivity too low; Detection area not set; Obstructions.	Adjust sensitivity in app. Define detection zones. Clear any obstructions.
Poor image quality at night	Lens dirty; Infrared lights blocked; Incorrect night vision mode.	Clean the lens. Ensure no obstructions. Try different night vision modes (B/W, Color, Smart Color).
Battery not charging	Insufficient sunlight on solar panel; Damaged solar panel/cable.	Relocate solar panel for more direct sunlight. Check cable connections. Charge manually via USB.
Two-way audio not working	Microphone/speaker muted in app; Network latency.	Check app settings to ensure audio is enabled. Ensure stable network connection.

7. SPECIFICATIONS

Feature	Detail
---------	--------

Feature	Detail
Model	Large White-solar Dual Lens
Brand	JOOAN
Connectivity	Wireless (2.4G WiFi only)
Resolution	3MP (per lens, total 2 lenses)
Viewing Angle	360 Degrees (overall coverage with PTZ)
Pan/Tilt Range	Pan: 330°, Tilt: 90°
Night Vision Range	Up to 30 Meters
Battery Capacity	9000mAh (Rechargeable)
Power Input	5 Volts, 7.5 Watt-hours (Solar charging supported)
Storage Options	MicroSD Card (8-256GB), Cloud Storage
Weatherproof Rating	IP66
Operating Temperature	-25°C to +55°C
Material	Acrylonitrile Butadiene Styrene (ABS)
Item Weight	1.15 kg
Installation Type	Screw In (Ceiling Mount, Wall Mount)

8. WARRANTY AND SUPPORT

8.1. Warranty Information

This JOOAN Wireless Security Camera comes with a **1-year manufacturer's warranty** from the date of purchase. This warranty covers defects in materials and workmanship under normal use. It does not cover damage caused by misuse, accidents, unauthorized modifications, or natural disasters. Please retain your proof of purchase for warranty claims.

8.2. Customer Support

For technical assistance, warranty claims, or any questions regarding your JOOAN product, please contact JOOAN customer support. Refer to the contact information provided on the product packaging or the official JOOAN website.

We are committed to providing excellent service and support for our products.

