

CSKB-LAN

User Manual: Generic Phone Case for CAT S42 H+

Model: CSKB-LAN

1. INTRODUCTION

This manual provides instructions for the Generic Phone Case, Model CSKB-LAN, designed specifically for the CAT S42 H+ smartphone. This case offers protection and enhanced functionality through its integrated ring holder and magnetic car mount compatibility.

SHOCKPROOF

Soft silicone frame + hard PC backplane, thickened four corners, and a silicone buffer layer in the middle, which is higher than the screen and camera design.

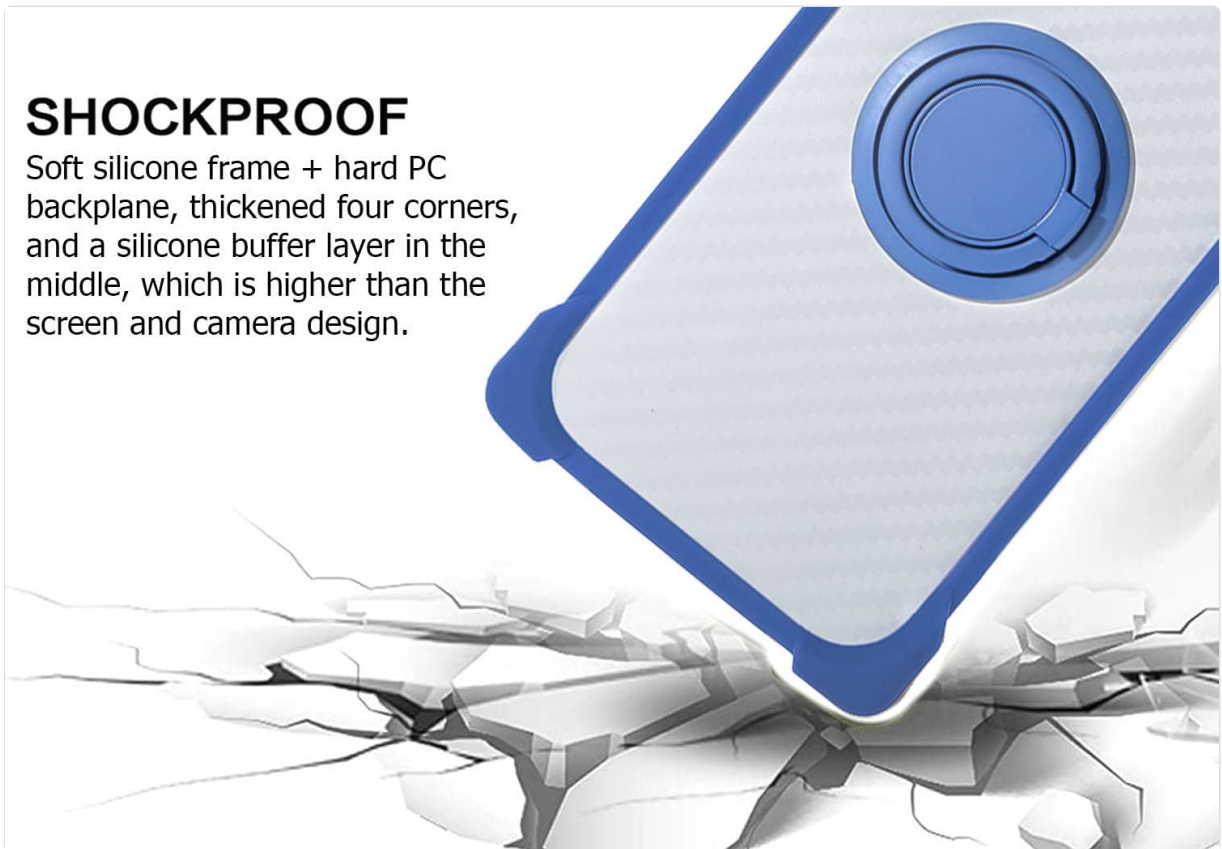
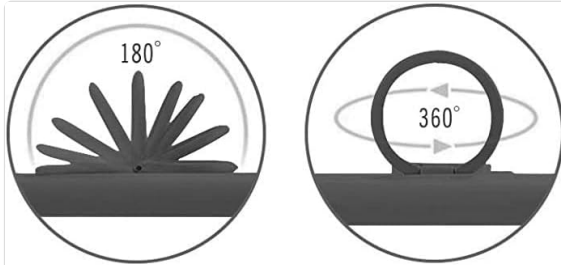


Image 1.1: Overview of the Generic Phone Case for CAT S42 H+.

2. PRODUCT FEATURES

- **Dual-Layer Protection:** Features a soft silicone frame combined with a hard PC backplane for enhanced shock absorption.
- **Enhanced Corner Protection:** Thickened four corners and a silicone buffer layer provide additional protection against drops.

- **Screen and Camera Protection:** The case design is higher than the screen and camera to prevent direct contact with surfaces.
- **360° Rotatable Ring Holder:** Integrated metal ring for secure grip and hands-free viewing.
- **Magnetic Car Mount Compatibility:** Designed to attach directly to magnetic car mounts (mount not included).
- **Precision Cutouts:** Ensures full access to all ports, buttons, and speakers.



SUPPORT MAGNETIC CAR MOUNT

Not include magnetic car mount,
not support wireless charging.



Image 2.1: Illustration of the shockproof design with reinforced corners and raised edges for screen and camera protection.

3. SETUP AND INSTALLATION

Follow these steps to properly install the phone case on your CAT S42 H+ smartphone:

1. **Clean Your Phone:** Ensure your CAT S42 H+ phone is clean and free of dust or debris before installation.
2. **Insert Phone:** Gently align your phone with the case, starting with one side.
3. **Press Firmly:** Apply gentle, even pressure around the edges of the phone until it is fully seated within the silicone frame. Ensure all corners are securely covered.
4. **Check Fit:** Verify that all buttons and ports are accessible and that the case fits snugly without any gaps.

4. OPERATING INSTRUCTIONS

4.1 Using the 360° Rotatable Ring Holder

The integrated ring holder provides a secure grip and acts as a kickstand for hands-free viewing.

- **For Grip:** Insert your finger through the ring to hold your phone more securely, reducing the risk of accidental drops.
- **For Stand Function:** Rotate the ring to your desired angle and prop your phone up on a flat surface for comfortable viewing of videos or video calls. The ring rotates 360 degrees for versatile positioning.



Image 4.1: Demonstrating one-hand operation and extended reach using the ring holder.



Image 4.2: Detailed view of the 360-degree rotatable ring holder mechanism.

4.2 Magnetic Car Mount Function

The case is designed with a metal plate integrated into the ring holder mechanism, allowing it to attach directly to magnetic car mounts.

- **Attachment:** Simply place the back of your phone case onto a compatible magnetic car mount. The integrated metal component will adhere to the magnet.
- **Positioning:** Adjust the angle of your phone on the mount for optimal viewing.
- **Note:** A magnetic car mount is *not* included with this product and must be purchased separately. This case does *not* support wireless charging due to the metal ring component.

One-Hand Operation

Touch more spots on the screen

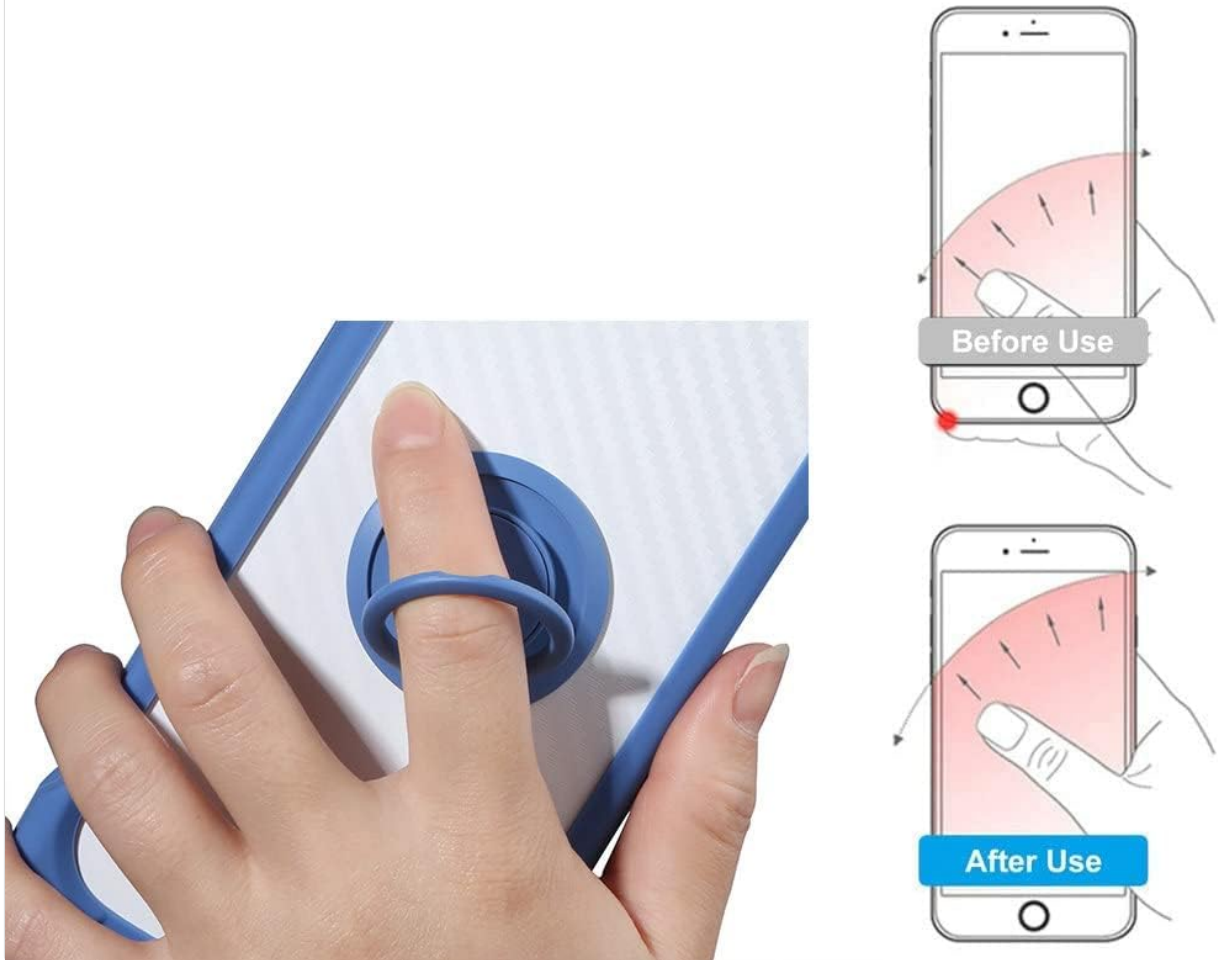


Image 4.3: The phone case securely attached to a magnetic car mount.

5. MAINTENANCE AND CARE

To ensure the longevity and appearance of your phone case, follow these care instructions:

- **Cleaning:** Wipe the case regularly with a soft, damp cloth. For stubborn dirt, a mild soap solution can be used. Avoid harsh chemicals or abrasive cleaners.
- **Avoid Extreme Temperatures:** Do not expose the case to extreme heat or cold, as this may affect the material's integrity.
- **Inspect Regularly:** Periodically check the case for any signs of wear or damage, especially around the corners and the ring holder mechanism.

6. TROUBLESHOOTING

- **Case does not fit:** Ensure you have the correct model (CAT S42 H+). Double-check that the phone is aligned correctly and pressed firmly into the case.
- **Ring holder is stiff:** The ring holder may be stiff initially. Gently rotate it a few times to loosen the mechanism. If it remains excessively stiff or loose, contact customer support.

- **Magnetic car mount not holding:** Ensure your magnetic car mount is strong enough and that there is no obstruction between the case and the mount.
- **Wireless charging not working:** This case is not compatible with wireless charging due to the integrated metal ring. Please remove the case for wireless charging or use a wired charger.

7. SPECIFICATIONS

Feature	Detail
Compatible Phone Model	CAT S42 H+
Material	TPU (Silicone Soft Frame) and PC (Backplane)
Color / Model	CSKB-LAN
Special Features	360° Rotatable Ring Holder, Magnetic Car Mount Compatibility, Shockproof Design
Product Dimensions	0.39 x 0.39 x 0.39 inches (L x W x H)
Item Weight	2.46 ounces
Wireless Charging	Not supported