

[Manuals.plus](#) /

› [LOVEPS](#) /

› LOVEPS KF-3150 One-Step Hot Air Brush and Volumizer Instruction Manual

## LOVEPS KF-3150

# LOVEPS KF-3150 One-Step Hot Air Brush and Volumizer Instruction Manual

Model: KF-3150

### IMPORTANT SAFETY INSTRUCTIONS

When using electrical appliances, especially when children are present, basic safety precautions should always be followed, including the following:

- Always unplug the appliance immediately after use.
- Do not use while bathing.
- Do not place or store appliance where it can fall or be pulled into a tub or sink.
- Do not place in or drop into water or other liquid.
- If an appliance falls into water, unplug it immediately. Do not reach into the water.
- Keep out of reach of children.
- Be cautious of overheating.
- Do not use near water.

### PRODUCT OVERVIEW

The LOVEPS KF-3150 One-Step Hot Air Brush and Volumizer is a versatile 4-in-1 styling tool designed to dry, straighten, curl, and add volume to your hair. It features advanced Ionic Technology to reduce frizz and enhance shine, providing salon-quality results efficiently.

# SALON RESULTS

IN UP TO HALF THE TIME



VERSUS DRYING AND STYLING SEPARATELY

Image: The LOVEPS Blow Hair Dryer Brush, highlighting its 4-in-1 functionality as a hair dryer, curling iron, hair straightener, and hair comb.



Image: A visual representation of the smoothing negative ion technology in action, showing hair before and after treatment for reduced frizz.



## HAIR DRYER BRUSH & VOLUMMIZER

Image: A model demonstrating the use of the hair dryer brush and volumizer, showcasing its ability to add volume and style.

### SETUP

The LOVEPS KF-3150 features a detachable brush head for easy storage and cleaning. Follow these steps to assemble or disassemble:

1. To detach, press the release button located on the handle.
2. Pick the brush head upward to separate it from the handle.
3. To attach, align the card slot on the brush head with the corresponding slot on the handle and insert until it clicks securely into place.



Image: A three-step visual guide demonstrating how to detach and attach the brush head using the release button and aligning the card slot.

## OPERATING INSTRUCTIONS

Ensure your hair is towel-dried to remove excess water before use. For best results, apply a heat protectant.

### Power and Heat Settings

The appliance features a rotary switch at the base of the handle to select desired settings:

- **OFF:** Turns the appliance off.
- **COOL:** Provides cool air for setting styles.
- **LOW:** Low heat, low speed for fine or damaged hair.
- **HIGH:** High heat, high speed for thick or coarse hair.



Image: Close-up of the handle showing the 3 heat settings (High, Medium, Low) and the detachable brush head.

## Drying and Styling

1. Section your hair into manageable parts.
2. Select the appropriate heat setting for your hair type.
3. Place the brush close to the roots and brush down towards the ends.
4. For added volume, place the brush near the roots and roll it upwards, holding for a few seconds before releasing.
5. For curls, wrap a section of hair around the brush and hold, then gently unroll.
6. Repeat until all sections are dry and styled.

# 4 IN 1 HAIR DRYER BRUSH

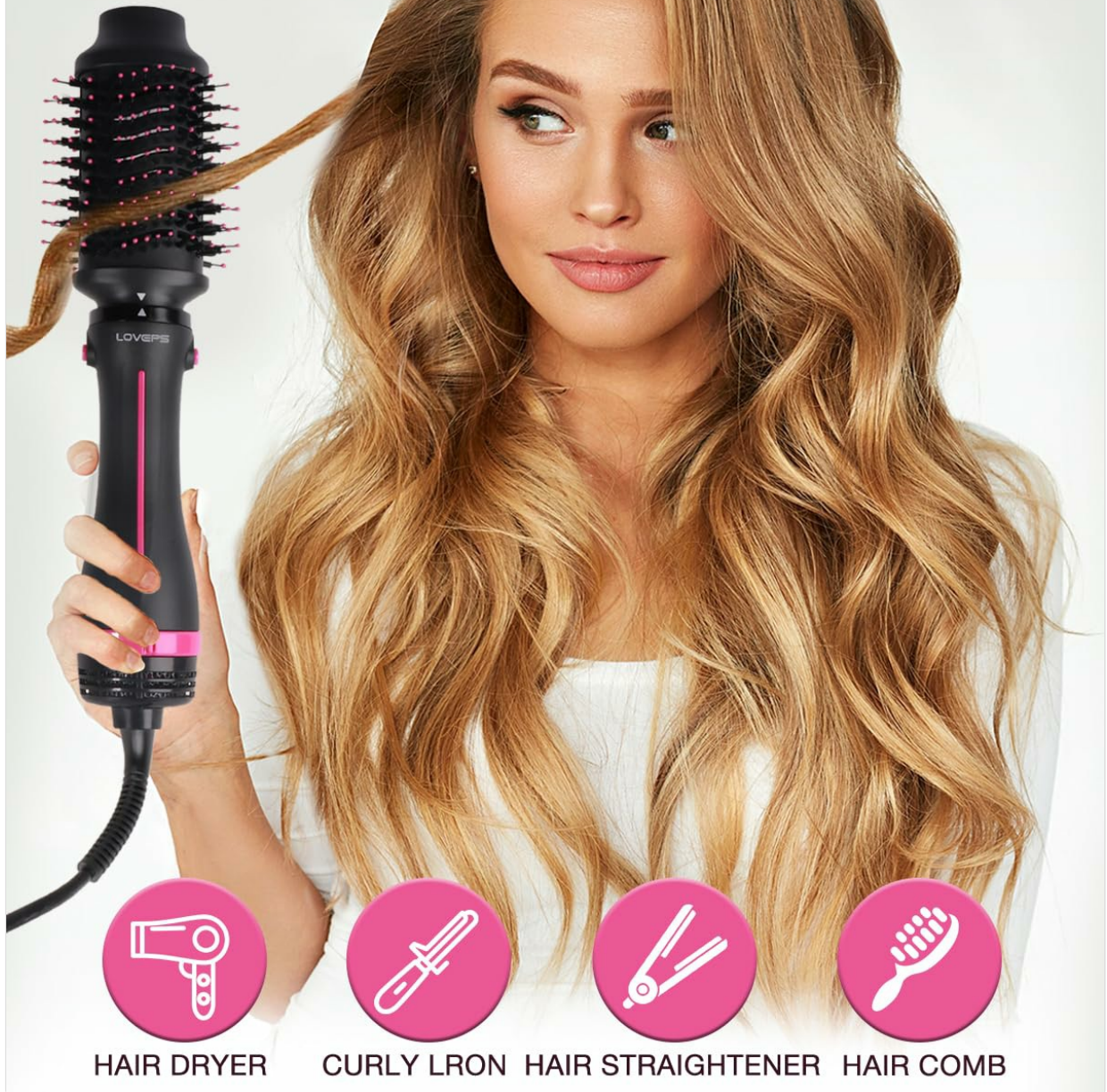


Image: A woman demonstrating the use of the LOVEPS Blow Hair Dryer Brush to style her hair, showing the brush in action.

Your browser does not support the video tag.

Video: A demonstration of the LOVEPS Oval Brush for Blow Drying, showcasing its effectiveness in styling various hair types.

## MAINTENANCE AND CLEANING

Regular cleaning ensures optimal performance and extends the life of your appliance.

1. Always unplug the appliance and allow it to cool completely before cleaning.
2. Detach the brush head from the handle.

3. Remove any hair tangled in the bristles using a comb or your fingers.
4. Wipe the surface of the brush head and handle with a soft, damp cloth. Do not immerse in water.
5. Ensure all parts are completely dry before reassembling or storing.

## TROUBLESHOOTING

Problem	Possible Cause	Solution
Appliance does not turn on.	Not plugged in correctly; power outlet issue.	Ensure the plug is fully inserted into a working outlet. Check the circuit breaker.
No heat or insufficient heat.	Incorrect heat setting; internal malfunction.	Verify the heat setting is not on 'COOL' or 'OFF'. If issue persists, contact customer support.
Hair tangles easily.	Too much hair per section; hair not detangled prior to use.	Work with smaller sections of hair. Ensure hair is thoroughly detangled before using the brush.
Brush head detaches during use.	Improper attachment.	Ensure the brush head is securely clicked into place as per setup instructions.

## SPECIFICATIONS

Feature	Detail
Model Name	KF-3150
Product Dimensions	3.7 x 4 x 13 inches
Weight	1.5 Pounds
Wattage	1000 watts
Voltage	125 Volts
Power Source	Corded Electric
Number of Speeds	3
Number of Settings	3
Special Features	Ionic Technology
Hair Type Compatibility	Dry, All
Material Type	Ceramic, Nylon
Color	Pink
Included Components	Volumizer
Manufacturer	KF

## WARRANTY AND SUPPORT

For warranty information or technical support, please refer to the product packaging or contact LOVEPS

customer service directly. Keep your purchase receipt for any warranty claims.