



707/708/709/710/711/712/715

MEROL Coffee Machine Brewer Unit / Grinder Replacement Instruction Manual

For Models: 707, 708, 709, 710, 711, 712, 715

INTRODUCTION

This manual provides essential instructions for the installation, operation, and maintenance of your MEROL coffee machine brewer unit and grinder replacement part. This component is designed for specific MEROL coffee machine models, including 707, 708, 709, 710, 711, 712, and 715. Please read this manual carefully before attempting any installation or maintenance to ensure proper function and longevity of the part.

SAFETY INFORMATION

- Always disconnect the coffee machine from the power supply before installing, removing, or cleaning the brewer unit.
- Handle the brewer unit with care to avoid damage to internal components.
- Ensure all connections are secure after installation to prevent leaks or electrical issues.
- Do not attempt to modify the brewer unit or use it for purposes other than its intended function.
- Keep out of reach of children.

PRODUCT OVERVIEW

The MEROL brewer unit is a crucial component responsible for grinding coffee beans (if applicable to your specific model's configuration) and brewing coffee. It consists of various plastic and mechanical parts designed for precise operation within your coffee machine.



Figure 1: Front-side view of the MEROL Brewer Unit. This image shows the main body of the brewer unit, highlighting its overall shape and some connection points.



原厂实物拍照

Figure 2: Rear-side view of the MEROL Brewer Unit. This perspective reveals additional structural details and connection points on the back of the unit.

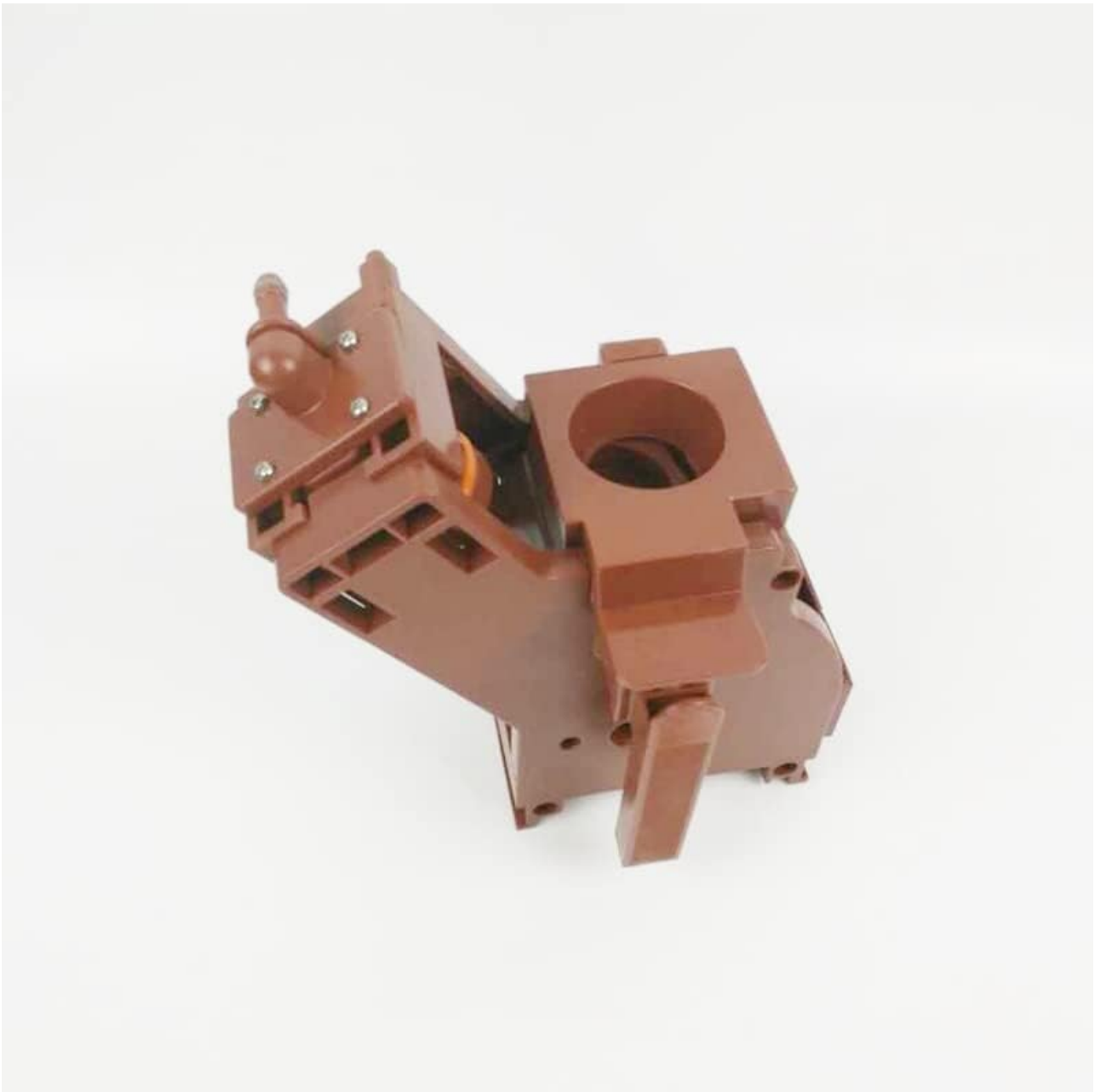


Figure 3: Top-down angled view of the MEROL Brewer Unit. This image provides a clearer look at the upper section and internal mechanisms.

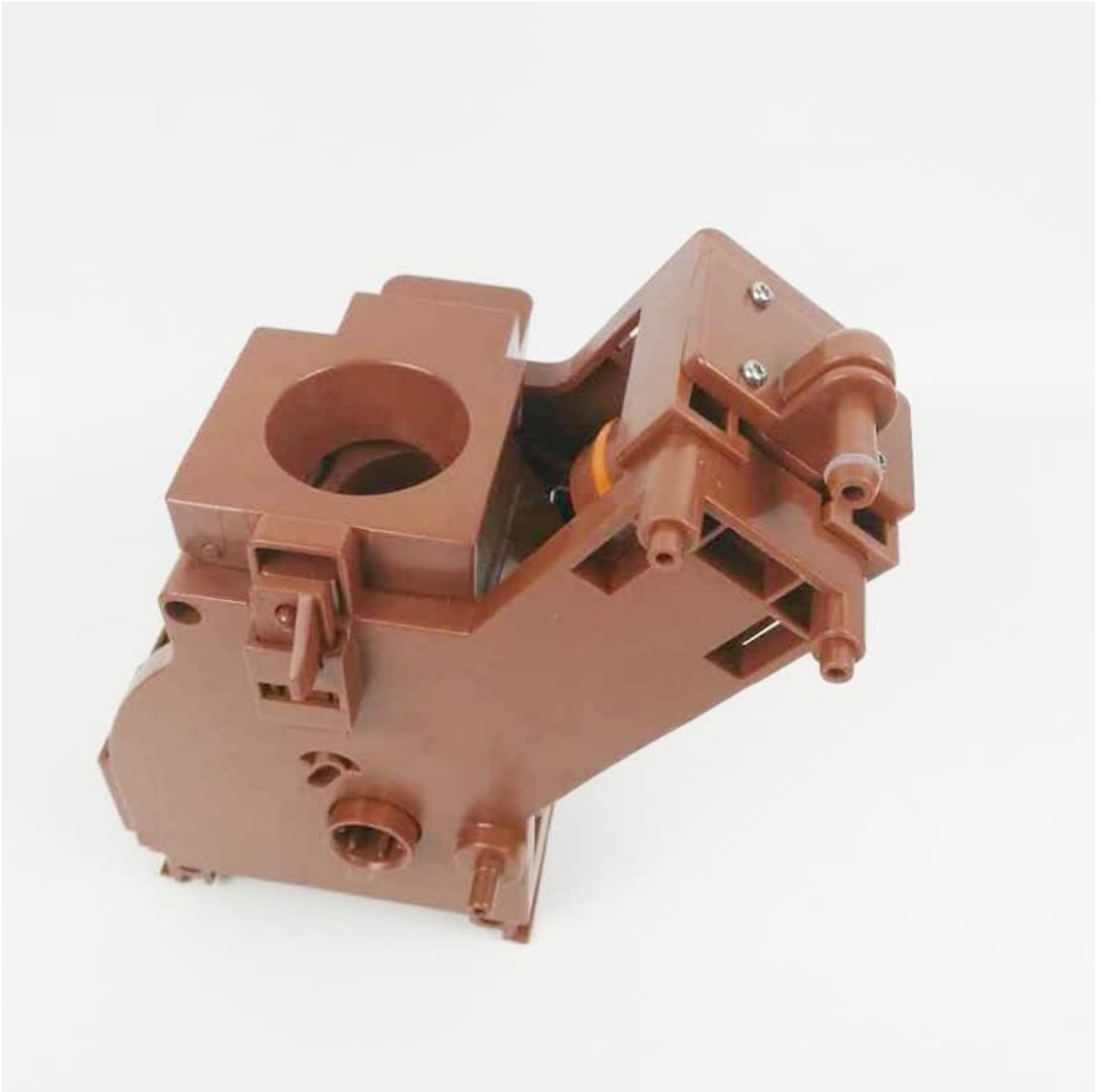


Figure 4: Side-angled view of the MEROL Brewer Unit. This view emphasizes the depth and various protrusions for integration into the coffee machine.



Figure 5: Alternative rear-side view of the MEROL Brewer Unit. Similar to Figure 2, this image offers another angle of the rear components and connections.

INSTALLATION

1. **Preparation:** Ensure your MEROL coffee machine is unplugged and completely cooled down. Remove any water tanks, bean hoppers, or drip trays.
2. **Accessing the Brewer Unit Compartment:** Refer to your specific MEROL coffee machine model's user manual for instructions on how to open the service door or access the internal compartment where the brewer unit is located. This usually involves opening a side or front panel.
3. **Removing the Old Unit:** Carefully locate the existing brewer unit. It typically has a handle or release mechanism. Follow your machine's instructions to unlock and slide out the old unit. Be prepared for residual coffee grounds or water.
4. **Installing the New Unit:** Align the new MEROL brewer unit with the guides inside the machine's compartment. Gently slide it into place until it clicks or locks securely. Ensure it is fully seated and cannot be easily pulled out.
5. **Closing the Machine:** Close the service door or panel, ensuring it latches correctly. Replace any removed components like water tanks or drip trays.
6. **Initial Check:** Plug the coffee machine back into the power supply. Turn it on and perform a rinse cycle (if available) to check for proper function and any error messages.

Note: Installation procedures may vary slightly between MEROL coffee machine models. Always consult your specific machine's manual for detailed steps.

OPERATION

Once installed, the brewer unit operates automatically as part of your MEROL coffee machine's brewing cycle. Its primary functions include:

- **Grinding (if applicable):** If your machine has an integrated grinder, the brewer unit works in conjunction with it to grind fresh coffee beans before brewing.
- **Compacting Coffee Grounds:** The unit compacts the ground coffee into a consistent puck for optimal extraction.
- **Brewing:** Hot water is passed through the compacted coffee grounds under pressure to produce espresso or coffee.
- **Disposing of Used Grounds:** After brewing, the unit ejects the used coffee pucks into the internal grounds container.

Ensure your coffee machine's water tank is filled and bean hopper (if applicable) contains fresh beans for proper operation.

MAINTENANCE

Regular cleaning and maintenance of the brewer unit are crucial for optimal performance and hygiene. Perform these steps regularly:

1. Daily/Weekly Cleaning:

- Turn off and unplug the coffee machine.
- Remove the brewer unit as described in the "Installation" section.
- Rinse the brewer unit thoroughly under lukewarm running water. Do not use detergents or abrasive sponges.
- Use a small brush (e.g., a toothbrush) to remove any stubborn coffee grounds from crevices and the filter screen.
- Allow the brewer unit to air dry completely before reinserting it into the machine.

2. **Monthly Lubrication (if recommended by your machine's manual):** Some brewer units require periodic lubrication of moving parts. If your MEROL machine's manual specifies this, use food-grade silicone grease on the designated O-rings and moving shafts.

3. **Descaling:** The brewer unit is part of the water path. Follow your coffee machine's descaling instructions regularly to prevent mineral buildup, which can affect performance and longevity.

Caution: Never immerse the entire brewer unit in water if it contains electrical components. Always refer to your specific coffee machine's manual for detailed cleaning instructions.

TROUBLESHOOTING

If you encounter issues after installing the new brewer unit, consider the following:

- **Unit Not Seating Correctly:** Ensure the brewer unit is fully inserted and locked into place. Remove and reinsert it, making sure no obstructions prevent it from seating properly.
- **Error Messages:** If the coffee machine displays an error related to the brewer unit, try removing, cleaning, and reinserting the unit. If the error persists, consult your coffee machine's main user manual or contact customer support.

- **Poor Coffee Quality:** Ensure the unit is clean and free of old coffee grounds. Check if the coffee machine's grinder settings (if applicable) are appropriate for your beans.
- **Water Leaks:** Verify that the brewer unit is correctly installed and all seals are intact. If leaks persist, the unit may be faulty or incorrectly installed.

For complex issues, it is recommended to seek assistance from a qualified technician or the manufacturer's support.

SPECIFICATIONS

Attribute	Detail
Product Type	Brewer Unit / Grinder Component
Brand	Generic (Compatible with MEROL)
Compatible MEROL Models	707, 708, 709, 710, 711, 712, 715
Material	Plastic
Color	Bean Grinder (referring to the color of the component, typically brown/dark plastic)
Dimensions (Approx.)	29 x 17 x 19 cm (11.4 x 6.7 x 7.5 inches)
Power Supply (Internal)	DC12V / DC24V (depending on specific machine configuration)
Specific Use	Coffee preparation

WARRANTY AND SUPPORT

This product is a replacement component. For warranty information regarding the brewer unit, please refer to the retailer or manufacturer from whom you purchased this specific part. For support related to your MEROL coffee machine's overall operation or other components, please consult your machine's original user manual or contact the MEROL manufacturer directly.

As this is a Generic brand compatible part, specific warranty terms may vary. Retain your proof of purchase for any warranty claims.