

Manuals+

[Q & A](#) | [Deep Search](#) | [Upload](#)

Manuals.plus /

› [GOWENIC](#) /

› GOWENIC 5 Inch IPS USB Mini Screen User Manual

GOWENIC GOWENIC40cvqdah35

GOWENIC 5 Inch IPS USB Mini Screen User Manual

Model: GOWENIC40cvqdah35

PRODUCT OVERVIEW

The GOWENIC 5 Inch IPS USB Mini Screen is a versatile secondary monitor designed for computer cases, providing real-time data monitoring for PC components such as CPU, GPU, and RAM. It features a vibrant IPS display, customizable themes, and a simple USB Type-C connection for ease of use. This manual provides essential information for setting up, operating, and maintaining your device.



Figure 1: GOWENIC 5 Inch IPS USB Mini Screen displaying real-time system performance data.

KEY FEATURES

-
- **Automatic Screen Rest:** Supports Windows systems for real-time host status monitoring, including an automatic screen rest function for energy saving.
 - **360 Degree Rotation:** Allows for horizontal and vertical screen switching, with 360-degree rotation capability and stepless brightness adjustment for comfortable viewing.
 - **Temperature Monitoring:** Primarily used for host temperature monitoring, requiring only a USB cable for connection to the computer, eliminating the need for additional power supply.
 - **DIY Theme Customization:** Offers a variety of built-in themes, with the option to change background images or switch themes with one click, enabling personalized design.
 - **IPS Screen:** Features a 5-inch IPS screen providing clear visuals, suitable for placement inside or outside the PC case. Displays CPU, GPU, usage, temperature, internet speed, date, time, volume, and weather forecast.

SETUP GUIDE

1. Package Contents

Before beginning, ensure all components are present in the package:

- GOWENIC 5 Inch IPS USB Mini Screen
- USB Type-C Cable
- Desktop Stand/Bracket
- (Optional) USB Hub, additional cables (depending on specific package)



Figure 2: Included components with the GOWENIC Mini Screen, typically featuring the screen, USB cable, and a stand.

2. Hardware Connection

1. **Connect the USB Cable:** Locate the USB Type-C port on the mini screen. Connect one end of the provided USB Type-C cable to this port.
2. **Connect to PC:** Connect the other end of the USB cable to an available USB port on your computer. The screen is powered directly via USB, requiring no additional power supply.
3. **Positioning:** Place the mini screen using the provided bracket. It can be positioned horizontally or vertically, inside or outside your PC case, depending on your preference and available space.

Interface Introduction

No need for extra power supply and HD multimedia interface cable, with 1 USB Type C interface, you can connect and use with just one USB cable



Type-C



TF card slot



Figure 3: Interface introduction, highlighting the Type-C port for connection and a TF card slot for potential future use.



Support horizontal
and vertical screen
switching



Energy saving
& environmental
protection



Comfortable
eye protection
with brightness
adjustment

Break Through Physical Limitations All You Need is the USB Input



USB cable connecting



Figure 4: The mini screen connects to your PC via a single USB cable, simplifying setup.

3. Software Installation (Windows Only)

The GOWENIC Mini Screen requires specific software for full functionality, particularly for AIDA64 data monitoring. This software is compatible with Windows operating systems only.

1. **Download Software:** Visit the official GOWENIC support website or the provided download link (if available in packaging) to obtain the latest monitoring software.
2. **Install Software:** Follow the on-screen instructions to install the software. Ensure you grant necessary permissions for the software to access system data.
3. **Configure Software:** Launch the installed software. You may need to configure settings such as which data points to display (CPU, GPU, RAM usage, temperatures, etc.) and select your preferred theme.

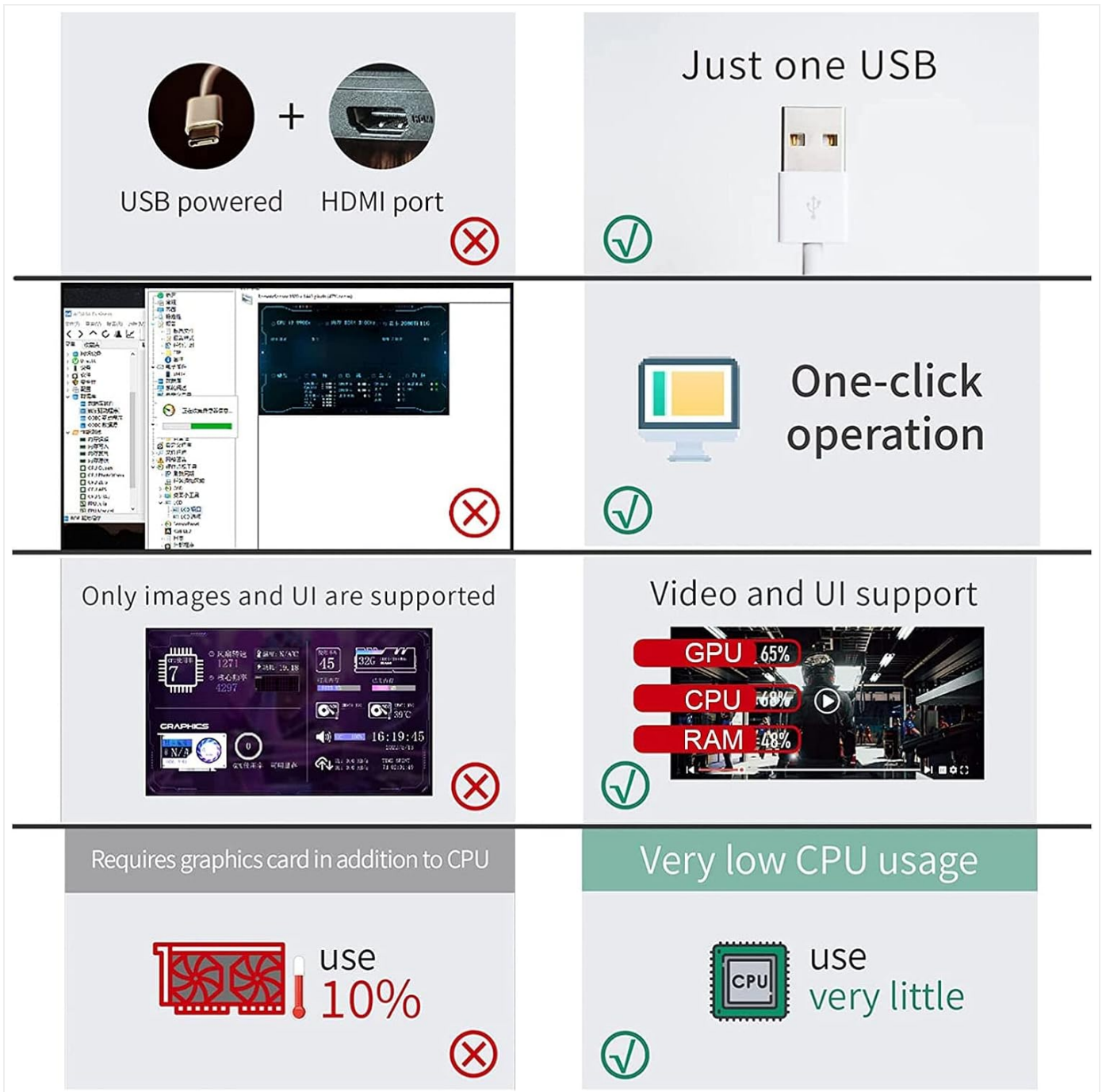


Figure 5: This image illustrates the simplicity of USB-only connection and highlights the software's ability to display video and UI with low CPU usage, unlike older methods requiring HDMI or high CPU load.

OPERATING INSTRUCTIONS

1. Displaying System Data

Once the software is installed and configured, the mini screen will automatically display the selected system data. The display updates in real-time, providing continuous monitoring of your PC's performance.



Figure 6: The mini screen can display various system metrics, including temperatures for CPU, GPU, RAM, and SSD, often with customizable backgrounds.

2. Customizing Themes and Layouts

The monitoring software allows for extensive customization of the display. You can:

- **Change Themes:** Select from a variety of pre-installed themes to match your aesthetic preference.
- **Customize Background:** Upload your own images or videos to use as the display background.
- **Adjust Layout:** Modify the arrangement of data elements on the screen. The screen supports both horizontal and vertical orientations, which can be adjusted via the software or by physically rotating the screen.
- **Brightness Control:** Adjust the screen brightness for optimal viewing comfort in different lighting conditions.

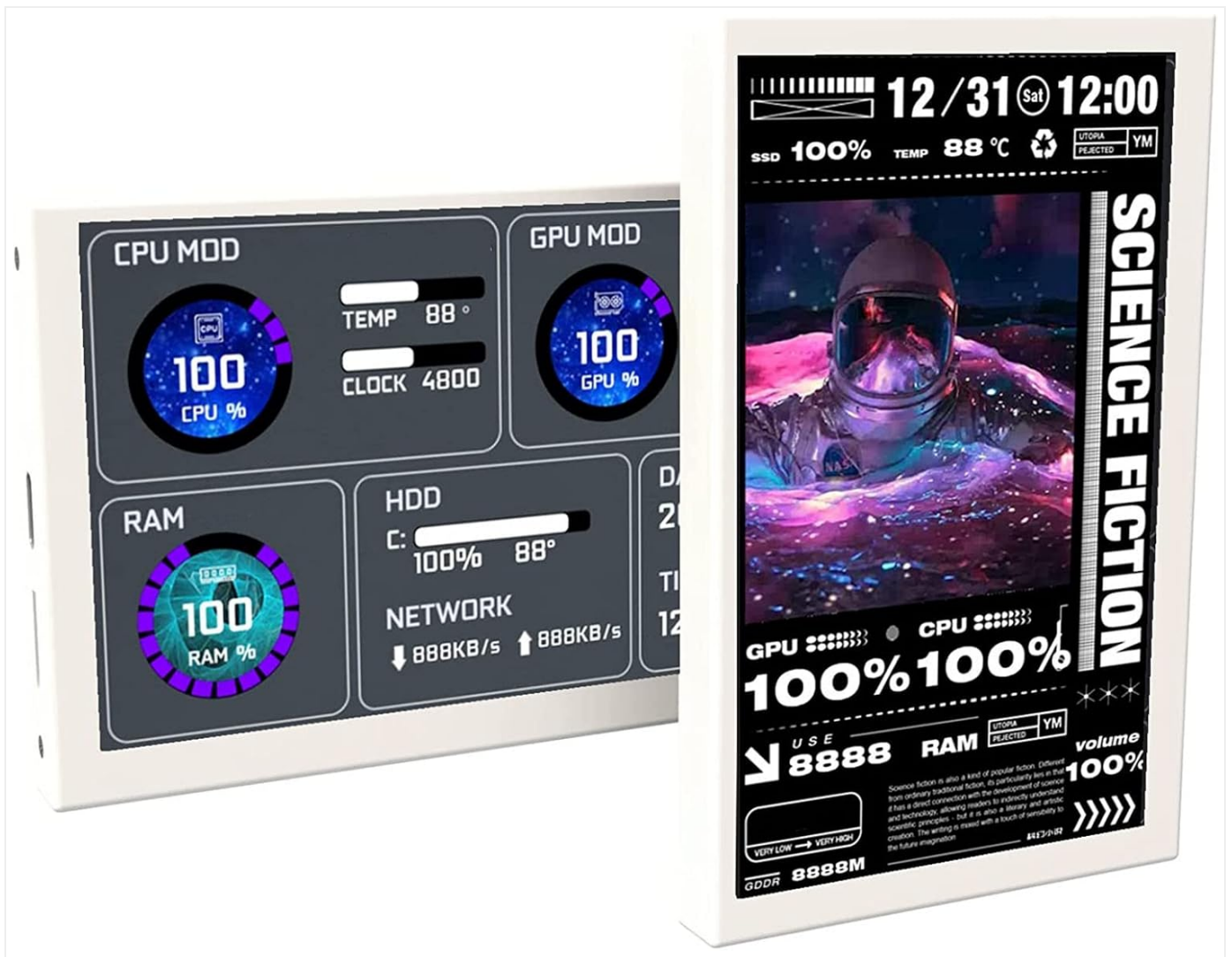
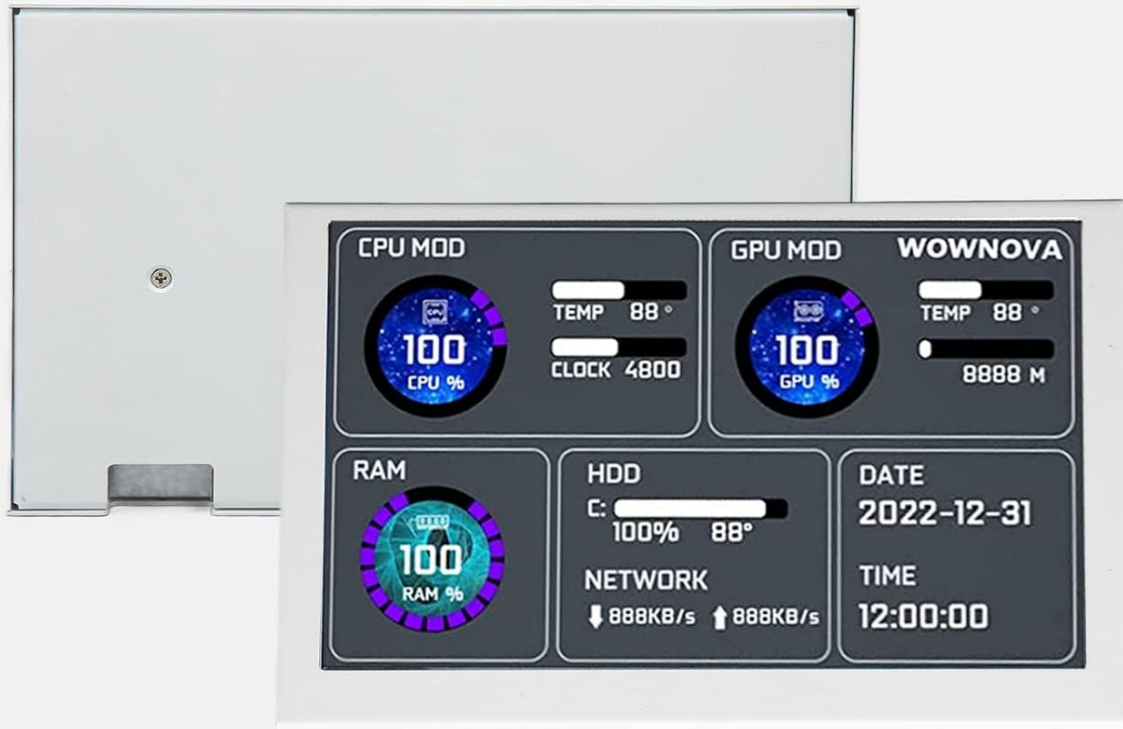


Figure 7: Examples of customizable display layouts and orientations, including vertical and horizontal modes, showcasing CPU, GPU, RAM, and network data.

5 inch PC Sensor Screen

Aluminum housing / Dynamic video / One-line direct connection



USB interface

Exclusive R&D Hardware

dynamic background

Support dynamic video background

Self-developed software

More professional, occupy less resources

Figure 8: This image emphasizes the dynamic background capabilities and the efficiency of the self-developed software, which uses minimal system resources.

3. Video Playback

The mini screen is capable of playing videos, allowing for dynamic backgrounds or displaying other visual content. This feature is managed through the dedicated software.

Your browser does not support the video tag.

Video 1: Demonstration of the GOWENIC 5 inch Computer Case Secondary Monitor displaying various system data and customizable themes, including video backgrounds and different orientations within a PC case.

MAINTENANCE

To ensure the longevity and optimal performance of your GOWENIC Mini Screen, follow these maintenance guidelines:

- **Cleaning:** Use a soft, lint-free cloth to gently wipe the screen and casing. Avoid abrasive cleaners or solvents that could damage the display or finish.

- **Dust Prevention:** If placed inside a PC case, ensure adequate airflow to prevent dust buildup on the screen. Regularly clean the PC case to minimize dust exposure.
- **Software Updates:** Periodically check the official GOWENIC website for software updates. Keeping the software updated can improve performance, add new features, and resolve potential issues.
- **Cable Management:** Ensure the USB cable is not kinked or under excessive tension to prevent damage.

TROUBLESHOOTING

Problem	Possible Cause	Solution
Screen does not turn on.	No power from USB port; faulty USB cable; screen malfunction.	Ensure the USB cable is securely connected to both the screen and the PC. Try a different USB port on your PC. Test with a different USB Type-C cable. If possible, test the screen on another PC.
No data displayed on screen.	Software not running; incorrect software configuration; software conflict.	Ensure the monitoring software is running in the background. Check software settings to confirm data points are selected for display. Restart the monitoring software and/or your PC. Ensure no other monitoring software is conflicting.
Screen display is dim or too bright.	Brightness settings need adjustment.	Adjust the brightness settings within the monitoring software.
Screen orientation is incorrect.	Software orientation setting; physical screen orientation.	Adjust the screen orientation setting within the monitoring software. Physically rotate the screen on its stand if the software setting doesn't apply.

SPECIFICATIONS

Feature	Detail
Brand	GOWENIC
Model	GOWENIC40cvqdah35
Display Size	5 Inches
Display Technology	IPS LCD
Resolution	800 x 480
Aspect Ratio	16:9
Refresh Rate	60 Hz
Viewing Angle	178 Degrees

Feature	Detail
Connectivity	USB Type-C (1 port)
Power Supply	USB Powered (No external power required)
Compatibility	Windows OS (for monitoring software)
Dimensions (approx.)	18.3 x 9.6 x 7.2 cm (Parcel Dimensions)
Weight (approx.)	320 g (Parcel Weight)

WARRANTY AND SUPPORT

GOWENIC products are designed for reliability and performance. For warranty information, technical support, or to download the latest software and drivers, please visit the official GOWENIC website or contact their customer service.

Manufacturer: GOWENIC

Date First Available: May 9, 2023

For further assistance, refer to the contact information provided with your product packaging or on the manufacturer's official support channels.

© 2023 GOWENIC. All rights reserved.

This manual is for informational purposes only. Specifications are subject to change without notice.