

SUNOL F08

SUNOL F08 Smart Glasses User Manual

Model: F08

INTRODUCTION

Welcome to the user manual for your SUNOL F08 Smart Glasses. These open-ear Bluetooth sunglasses combine audio technology with UV protection, designed for comfort and convenience during various activities. This manual provides essential information for setup, operation, maintenance, and troubleshooting to ensure optimal use of your device.

PRODUCT FEATURES

- **Open Ear Listening Design:** Allows you to hear audio while remaining aware of your surroundings for safety.
- **TWS 5.3 Bluetooth:** Provides a fast, reliable connection and high-fidelity sound for calls, navigation, and music.
- **Touch Controls:** Intuitive touch-sensitive controls for managing audio and calls without needing to access your paired device.
- **UV Protection Lenses:** Effectively filter light and protect your eyes from fatigue, especially during outdoor activities.
- **Comfortable and Lightweight:** Designed for stable wear, suitable for various face shapes and strenuous exercise.
- **Waterproof Design:** Withstands rain, making it suitable for use in diverse environments.

PRODUCT OVERVIEW



Image: Front-side view of the SUNOL F08 Smart Glasses, showcasing the sleek design and dark lenses.

Intelligent audio glasses

Bluetooth | UV resistant | Lightweight



Image: The SUNOL F08 Smart Glasses highlighted with key features: Bluetooth connectivity, UV resistance, and lightweight construction.

GETTING STARTED

Charging the Device

Before first use, fully charge your smart glasses. Connect the provided USB-C charging cable to the charging port on the glasses and to a compatible USB power source. The charging indicator light will show the charging status.

Power On/Off

- **To Power On:** Press and hold the touch button area on the temple for 3 seconds. You will hear an audible confirmation.
- **To Power Off:** Press and hold the touch button area on the temple for 5 seconds. An audible confirmation will indicate the device is powering down.

Bluetooth Pairing

1. Ensure the smart glasses are powered off.
2. Press and hold the touch button area for 3 seconds to power on the glasses. They will automatically enter pairing mode.

3. On your smartphone or Bluetooth-enabled device, go to Bluetooth settings.
4. Search for available devices and select 'TWS-F' from the list.
5. Once connected, you will hear an audible confirmation.



Image: Illustration of the Bluetooth 5.3 chip, highlighting the advanced connectivity technology.

OPERATION

Touch Controls

The smart glasses feature touch-sensitive controls on the temples for easy management of audio and calls.



Image: The touch control area on the temple of the smart glasses, indicated by a fingerprint icon.

- **Play/Pause Music:** Single tap the touch area.
- **Next Track:** Double tap the right touch area.
- **Previous Track:** Double tap the left touch area.
- **Answer/End Call:** Single tap the touch area during an incoming call.
- **Reject Call:** Press and hold the touch area for 2 seconds during an incoming call.

Voice Assistant

Activate your device's voice assistant (e.g., Siri, Google Assistant) directly from your smart glasses.

- **Activate Voice Assistant:** Triple tap the touch area.

Wake up voice assistant

Answer and make phone calls,
play pause music

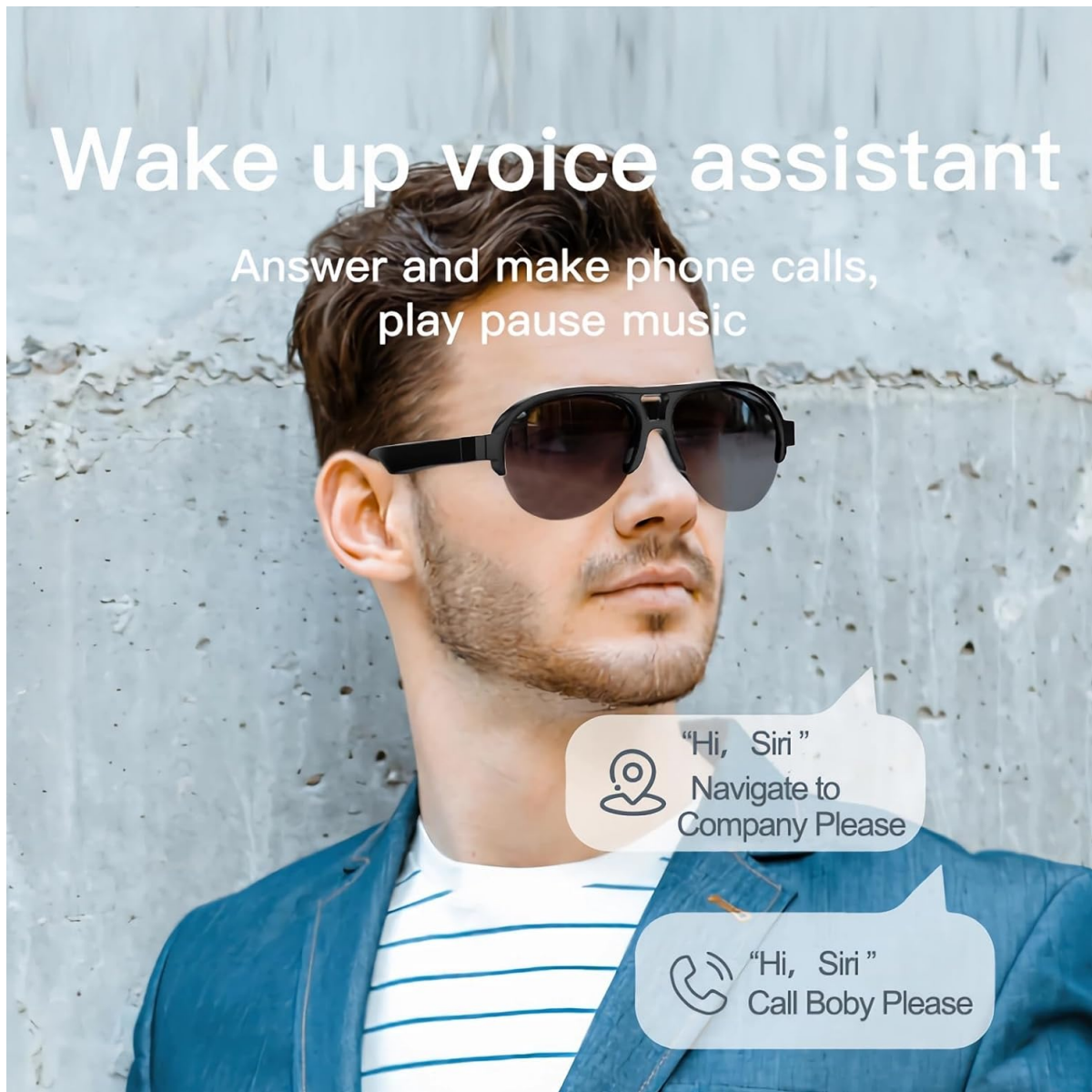


Image: A man wearing the smart glasses, with speech bubbles indicating interaction with a voice assistant for navigation and calls.

Open Ear Audio

The open-ear design allows for audio playback while maintaining situational awareness. Sound is directed towards your ears, minimizing leakage to others.

Dual speaker directional sound output

Maintain privacy and accurately transmit sound to your ears

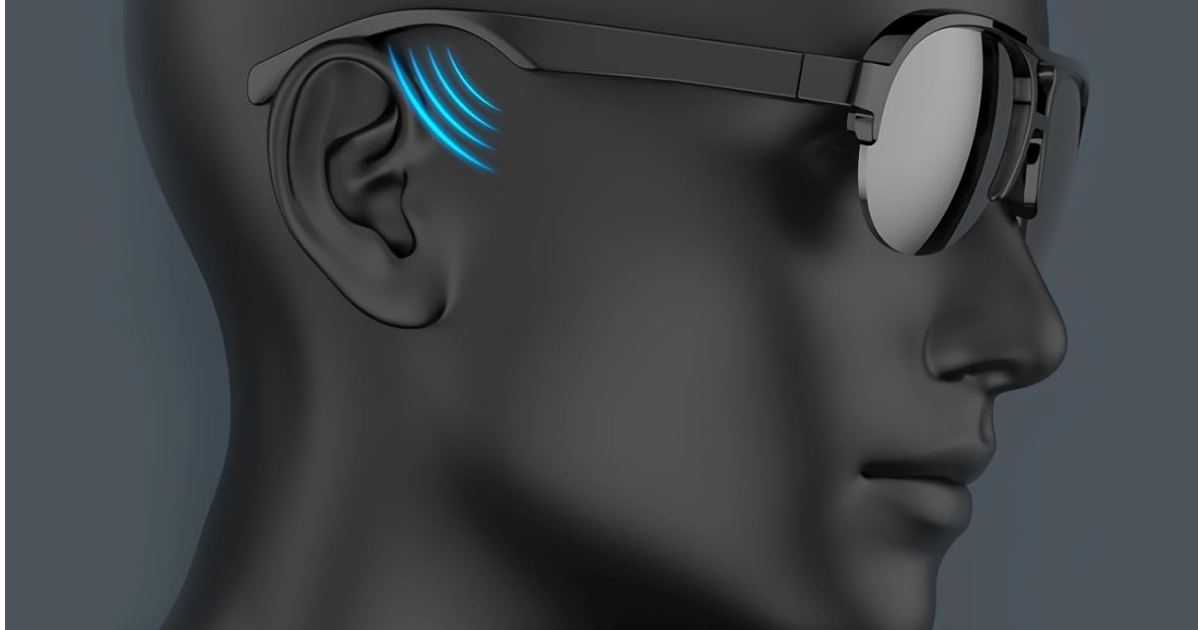


Image: A diagram illustrating the directional sound output from the smart glasses' speakers towards the ear, ensuring privacy and clear audio.

MAINTENANCE

Cleaning

To clean your smart glasses, use the provided lens cloth or a soft, lint-free cloth. For lenses, a specialized lens cleaning solution can be used. Avoid harsh chemicals or abrasive materials that may damage the lenses or frame.

Waterproof Design

The SUNOL F08 Smart Glasses feature an IPX4 waterproof rating, meaning they are resistant to splashing water from any direction. This makes them suitable for use in light rain or during sweaty activities. Do not submerge the glasses in water or expose them to pressurized water streams.

IPX4 waterproof

IPX4 dustproof and waterproof body
Easily cope with various situations in life



Image: The smart glasses with water droplets on the lenses and frame, demonstrating their IPX4 waterproof capability.

UV Protection Lenses

The lenses provide UV protection, blocking harmful ultraviolet rays. Keep lenses clean to maintain optimal clarity and protection.

High definition UV resistant lenses

UV resistant and harmful light blocking
for clearer field of vision



Image: The smart glasses with sun rays reflecting off the lenses, symbolizing their high-definition UV resistant properties.

TECHNICAL SPECIFICATIONS

Feature	Specification
Model	F08
Bluetooth Version	TWS 5.3
Battery Type	Lithium Polymer
Product Dimensions	5.12 x 2.76 x 2.05 inches
Product Weight	3.21 ounces
Water Resistance	IPX4 (Splash-proof)
ASIN	B0C2Z1DG4M



Image: The smart glasses with an overlay indicating approximately 2.5 hours of battery life.

TROUBLESHOOTING GUIDE


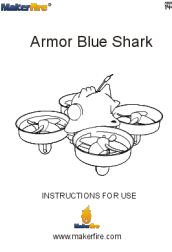




- **Device will not power on:** Ensure the glasses are fully charged. Connect to a power source and try again.
- **Cannot pair with Bluetooth:**
 - a. Ensure the glasses are in pairing mode (power on, then check for 'TWS-F' in your device's Bluetooth list).
 - b. Make sure Bluetooth is enabled on your device.
 - c. Move the glasses closer to your device.
 - d. Restart both the glasses and your device.
- **No sound or low volume:**
 - a. Check the volume level on both the glasses and your paired device.
 - b. Ensure the glasses are properly connected via Bluetooth.
 - c. Verify that the audio is playing from the correct output source on your device.
- **Touch controls are unresponsive:** Ensure your fingers are clean and dry. Try restarting the glasses.

SAFETY INFORMATION

- Do not attempt to disassemble or modify the device.
- Keep the device away from extreme temperatures, direct sunlight, and open flames.
- Avoid exposing the device to corrosive liquids.
- Use only the provided charging cable or a certified equivalent.
- Dispose of batteries and electronic components responsibly according to local regulations.

WARRANTY AND SUPPORT

For warranty information or technical support, please refer to the documentation included with your purchase or contact the retailer. Specific warranty terms and conditions may vary.

	<p>Loshall Tag F08: Setup and Usage Guide with Apple Find My</p> <p>A concise guide to setting up and using the Loshall Tag F08 tracker with Apple's Find My network, including button operations and FCC compliance information.</p>
	<p>Makerfire Armor Blue Shark Mini Drone: Instructions for Use and Safety Guide</p> <p>Comprehensive instructions for the Makerfire Armor Blue Shark mini drone, covering setup, safe flight, battery usage, controller functions, troubleshooting, and FCC compliance. Designed for users aged 14 and above.</p>
	<p>FIREFLO Model F08 & F08-M Wet Barrel Fire Hydrant Installation and Maintenance Manual</p> <p>This manual provides comprehensive guidance for the installation, inspection, testing, and routine maintenance of the FIREFLO Model F08 and F08-M Wet Barrel Fire Hydrant by United Water Products. It also includes information on the United Model 8850 Dual Door Break Check Valve.</p>
	<p>Keysight N9038A MXE Receiver Frequency Range Upgrade Installation Note (Options F04, F08, F13)</p> <p>This document provides detailed instructions for installing frequency range upgrades (Options F04, F08, F13) on the Keysight N9038A MXE Receiver. It covers ESD precautions, upgrade requirements, hardware removal and installation steps, software updates, and performance verification.</p>
	<p>IBM TotalStorage SAN Fibre Channel Switch 3534 Model F08 User's Guide</p> <p>Comprehensive user's guide for the IBM TotalStorage SAN Fibre Channel Switch, Model 3534 F08. Covers installation, configuration, Fabric OS, TotalStorage Specialist, performance monitoring, and advanced features for managing Storage Area Networks.</p>
	<p>MQD24-M/K-F08</p> <p>MQD24-M/K-F08 APP</p>

Documents - SUNOL – F08

no relevant documents