



Manuals.plus /

› 1Zpresso /

› 1Zpresso J Manual Coffee Grinder Instruction Manual

1Zpresso J

1Zpresso J Manual Coffee Grinder Instruction Manual

Model: J

INTRODUCTION

This manual provides comprehensive instructions for the safe and effective use, maintenance, and troubleshooting of your 1Zpresso J Manual Coffee Grinder. Please read this manual thoroughly before operating the grinder to ensure optimal performance and longevity of the product.

PRODUCT OVERVIEW

The 1Zpresso J Manual Coffee Grinder is designed for precision coffee grinding, featuring a durable stainless steel conical burr and an internal numerical adjustment system. Its robust construction and thoughtful design ensure a consistent grind for various brewing methods.



The 1Zpresso J Manual Coffee Grinder, shown with its foldable handle and included cleaning brush.

Key Components:

- **Hopper:** Top section where whole coffee beans are loaded.
- **Grinding Mechanism:** Houses the 48mm stainless steel conical burr set.
- **Adjustment Dial:** Internal numerical ring for precise grind size selection.
- **Crank Handle:** Foldable handle for grinding, designed for portability.
- **Catch Cup:** Bottom container for collecting ground coffee.
- **Anti-slip Rubber Grip:** Provides a secure hold during grinding.

SETUP

Upon receiving your 1Zpresso J grinder, unpack all components and inspect for any damage. The grinder comes pre-assembled. Ensure the crank handle is securely attached before first use. It is recommended to perform a quick cleaning of the burrs with the included brush before grinding coffee for consumption.

OPERATING INSTRUCTIONS

Grind Adjustment:

The 1Zpresso J features an internal numerical adjustment system with 30 clicks per full rotation, allowing for precise control over your grind size. To adjust, remove the catch cup and locate the adjustment dial at the bottom of the grinding mechanism. Rotate the dial to your desired setting. A lower number indicates a finer grind, and a higher

number indicates a coarser grind.

Quick Disassembly

All 1Zpresso grinders are designed for hassle-free disassembly and cleaning, no tools required.



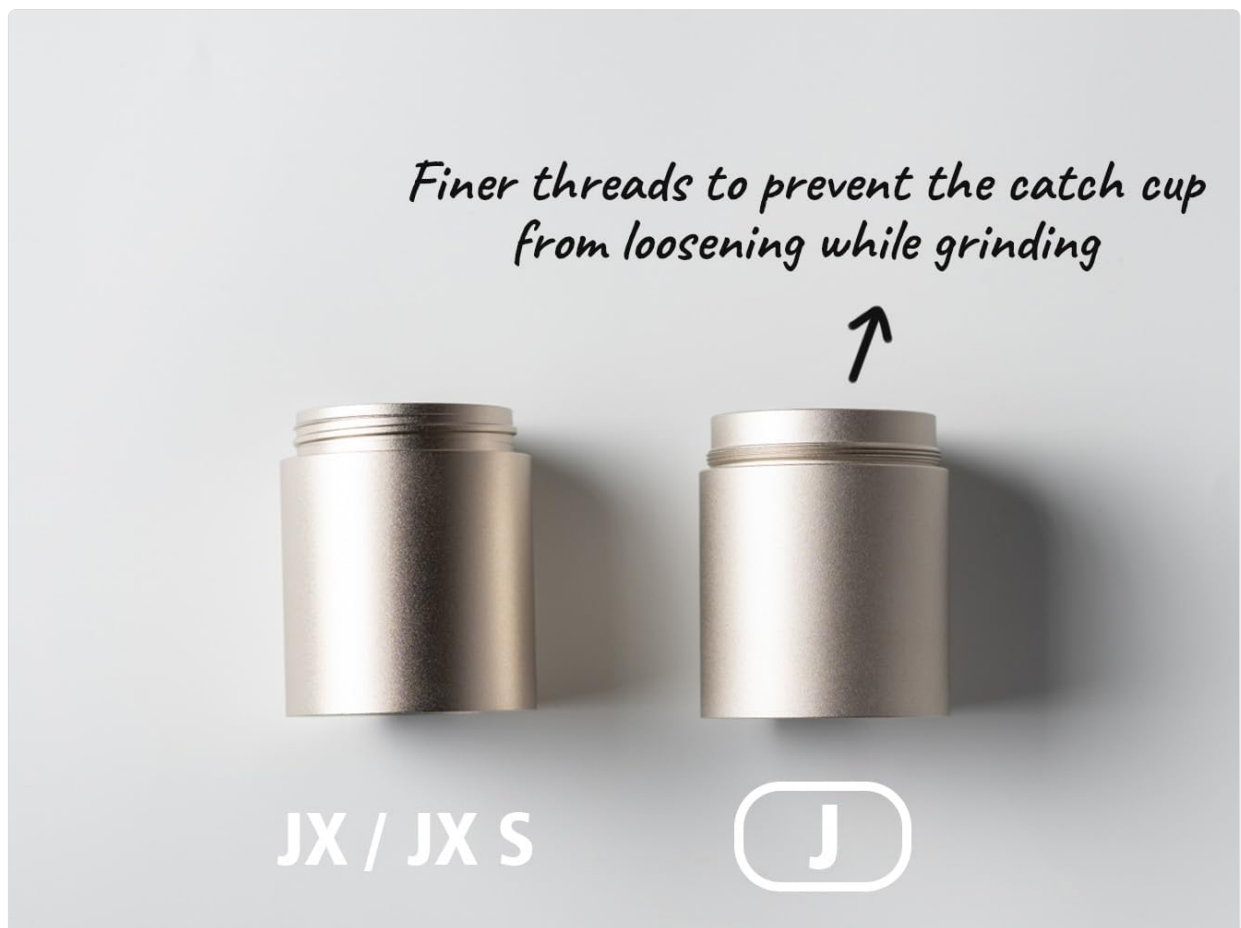
 No Water  No Tools



Illustration of the internal grind adjustment mechanism, showing fine to coarse settings with 30 clicks per rotation. Recommended settings for Moka Pot (0.8-1.1), Pour Over (2.2-2.8), and French Press (3.0-3.4) are displayed.



A close-up view of the internal numerical adjustment dial on the 1Zpresso J grinder, used to select grind size.

Grinding Process:

1. **Load Beans:** Open the top lid and pour up to 35g of whole coffee beans into the hopper. Close the lid.
2. **Set Grind Size:** Adjust the internal numerical dial to your desired grind setting (refer to the Grind Adjustment section).
3. **Attach Handle:** Ensure the crank handle is securely placed on the shaft.
4. **Grind:** Hold the grinder firmly with one hand, utilizing the anti-slip rubber grip, and rotate the crank handle clockwise with the other hand until all beans are ground. The foldable handle enhances portability and stability.
5. **Collect Grounds:** Unscrew the catch cup to retrieve your freshly ground coffee.

30-35g

Big Capacity



Demonstration of pouring 30-35g of freshly ground coffee from the catch cup into a coffee filter.

Foldable Handle

The new foldable handle enhances portability and stability, while the improved knob offers better grip, especially for smaller hands.

Easy to grip!



The 1Zpresso J grinder featuring its foldable handle, designed for portability and compact storage.

Anti-slip Rubber Grip

The J coffee grinder ensures a secure and slip-free grinding experience, allowing you to achieve precise and consistent coffee grinds effortlessly.



A view of the anti-slip rubber grip on the body of the 1Zpresso J grinder, ensuring a secure hold during operation.

MAINTENANCE

Cleaning:

Regular cleaning is essential for maintaining grind consistency and flavor. The 1Zpresso J grinder is designed for tool-free disassembly, making cleaning straightforward.

1. **Disassemble:** Unscrew the catch cup, then carefully remove the internal components, including the burr and adjustment dial. No tools are required.
2. **Brush Clean:** Use the included cleaning brush to remove any residual coffee grounds from the burrs, shaft, and internal chambers.
3. **Avoid Water:** Do not wash the burrs or internal metal components with water, as this can lead to rust and damage. Only use the dry brush for cleaning.
4. **Reassemble:** Carefully reassemble all components in reverse order, ensuring they are securely fitted.

48mm

STAINLESS STEEL BURR

Precision

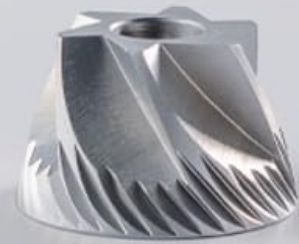
Consistency

Efficiency

Durability

Experience precision, durability, consistency, and efficiency like never before.

The burr ensures your coffee beans are ground to perfection, offering a rich and aromatic coffee experience every time.



Exploded view of the 1Zpresso J grinder components, illustrating its tool-free disassembly for cleaning.

New design to reduce static electricity



JX / JX S

J

The included cleaning brush being used to clean the burr and internal components of the grinder.

TROUBLESHOOTING

- **Difficulty Grinding:**

If the handle is hard to turn, check if the grind setting is too fine for the beans, or if there's a blockage. Coarsen the grind setting slightly. Ensure no foreign objects are in the hopper.

- **Inconsistent Grind:**

Ensure the burrs are clean and free of old coffee residue. Verify that all internal components are properly assembled and tightened. The burr is calibrated and securely fixed by the 1Zpresso team to prevent wobbling.

- **Catch Cup Loosening During Grinding:**

The 1Zpresso J model features finer threads designed to prevent the catch cup from loosening. Ensure the catch cup is securely screwed on before grinding.

- **Static Electricity with Grounds:**

The J model incorporates a new design to reduce static electricity. If static persists, a small amount of water (a few drops) can be added to the beans before grinding (RDT method) to minimize static cling.

SPECIFICATIONS

Feature	Detail
Brand	1Zpresso
Model	J
Material	Stainless Steel
Color	Silver
Product Dimensions	6.7"L x 2.2"W x 7.2"H
Item Weight	1.85 pounds
Capacity	30-35g (coffee beans)
Burr Type	48mm Conical Stainless Steel
Adjustment	Internal Numerical, 30 Clicks/Rotation

WARRANTY AND SUPPORT

The 1Zpresso J Manual Coffee Grinder is backed by a one-year limited warranty. This warranty covers manufacturing defects and issues arising from normal use. For warranty claims or technical assistance, please contact 1Zpresso customer support. The 1Zpresso team is committed to providing 100% customer support to ensure your satisfaction.

For further assistance, please visit the official 1Zpresso website or contact their customer service department directly.