

VCELINK KJ22-C6-24P-US

VCELINK Tool-Free RJ45 Connector Instruction Manual

MODEL: KJ22-C6-24P-US

1. Product Overview

The VCELINK Tool-Free RJ45 Connector is designed for quick and easy termination of CAT6 and CAT5E Ethernet cables. Its innovative tool-less design eliminates the need for a crimping tool, making installation straightforward for both DIY enthusiasts and professionals. Featuring gold-plated contacts, these modular plugs ensure high-speed and reliable data transmission, supporting speeds up to 1Gbps. The robust nut-type strain relief boot provides a secure connection, resistant to stretching, and its compact size allows for side-by-side installation in various networking environments.

2. What's in the Box

- 24 x VCELINK Tool-Free RJ45 Connectors

3. Key Features

- **Easy Installation:** Tool-free design for quick and effortless connection without a crimping tool. Disassembly and reassembly are simple for error correction.
- **High-Speed Transmission:** Specifically designed for CAT6/CAT5E Ethernet cables (23-26AWG, Wire OD 0.4-1.2mm). Gold-plated contacts ensure reliable signal transmission up to 1Gbps.
- **Stable Connection:** Nut-type strain relief boot supports network cables with 6.0-7.6mm cable jacket OD, providing a secure and stretch-resistant connection.
- **Wide Application:** Small size allows for side-by-side plugging, ideal for switches, routers, and PCs.

No Crimping Tools Required

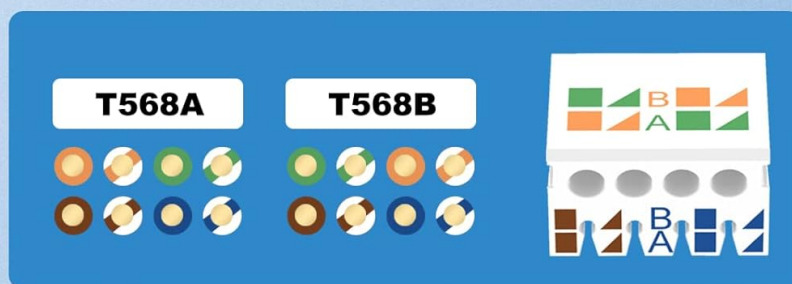
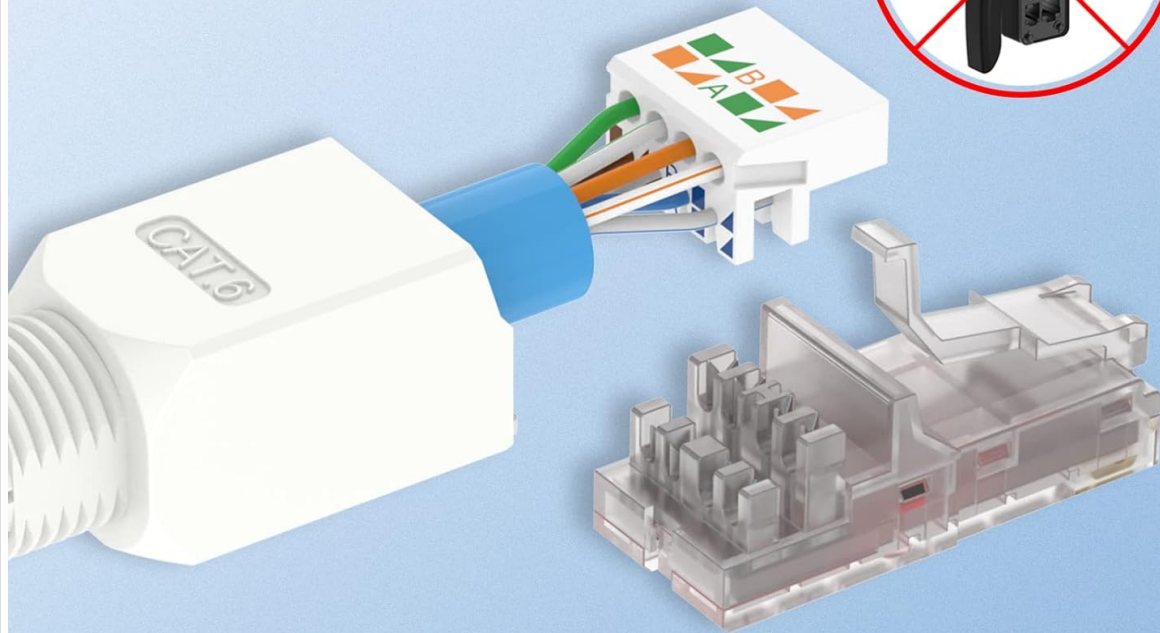


Image: The tool-free design simplifies the connection process, eliminating the need for specialized crimping tools.

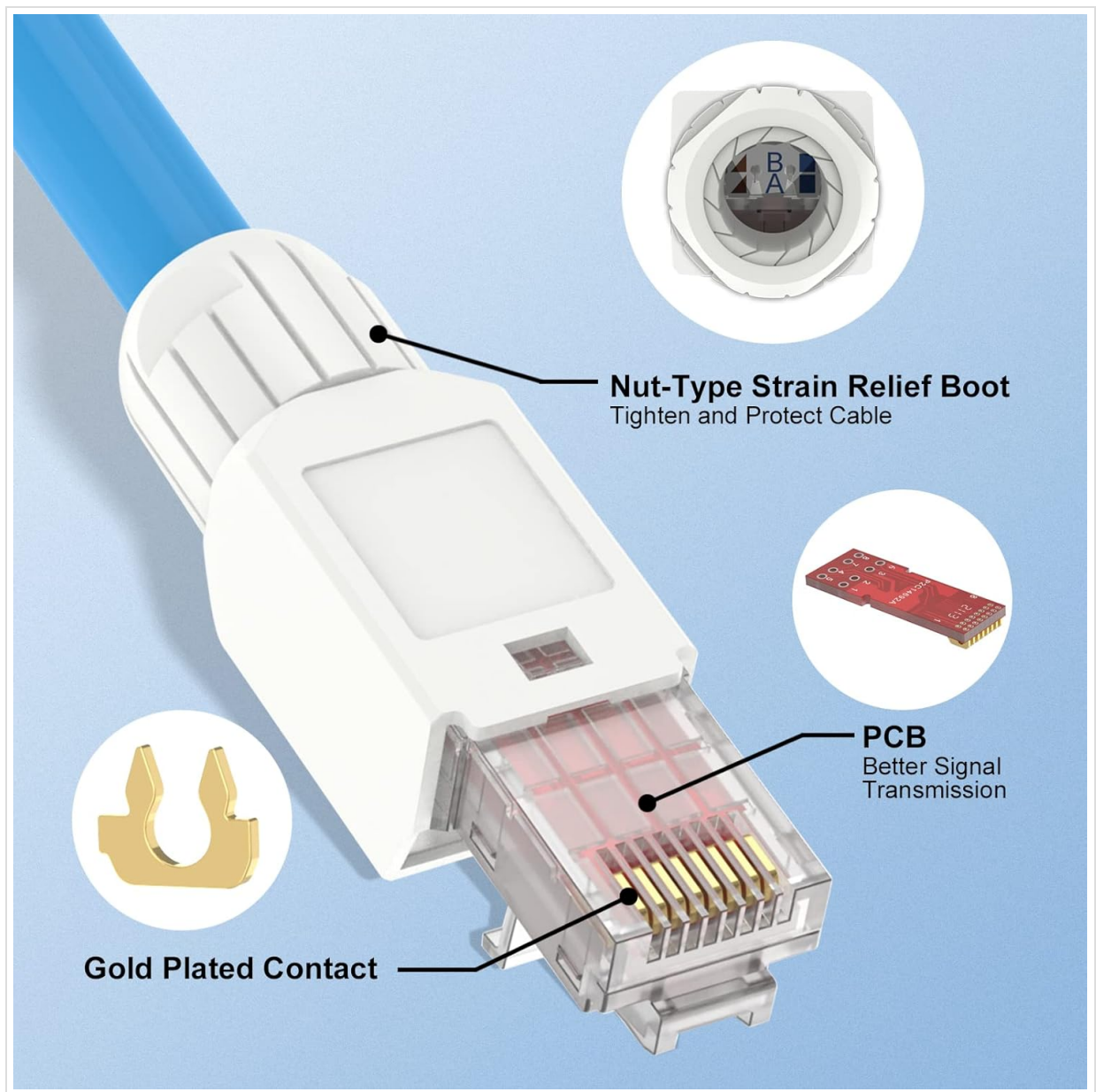


Image: Internal components highlighting the gold-plated contacts for superior signal transmission and the robust strain relief boot.



Image: The compact design allows multiple connectors to be installed closely together, optimizing space in network setups.

4. Setup and Installation Guide

Follow these steps to properly install the VCELINK Tool-Free RJ45 Connector onto your Ethernet cable:

Video: Official installation guide for VCELINK Tool-Free RJ45 Connectors, demonstrating each step of the termination process.

1. **Insert the Boot:** Slide the nut-type strain relief boot onto the Ethernet cable.
2. **Strip the Cable Sheath:** Carefully strip approximately 2cm (0.79 inches) of the outer cable sheath to expose the twisted pairs.
3. **Arrange and Straighten Wires:** Untwist the exposed wire pairs and straighten each individual wire.
4. **Follow Color Code and Thread:** Based on your desired wiring standard (T568A or T568B), arrange the wires according to the color code diagram provided on the load bar. Thread each wire into its corresponding slot on the load bar. Ensure the wires are fully seated.
5. **Cut Excess Wires:** Use a wire cutter to trim the excess wires flush with the load bar. The top and bottom rows of wires may need to be cut to varying lengths to ensure a clean termination.
6. **Align and Press:** Align the load bar with the main connector body, ensuring the grooves match. Press the two parts firmly together until they click into place.
7. **Close the Cover:** Securely close the clear cover over the terminated wires.
8. **Tighten the Nut:** Twist the nut-type strain relief boot to tighten it onto the connector body, providing strain relief and

securing the cable.

9. **Complete:** The connector is now installed.

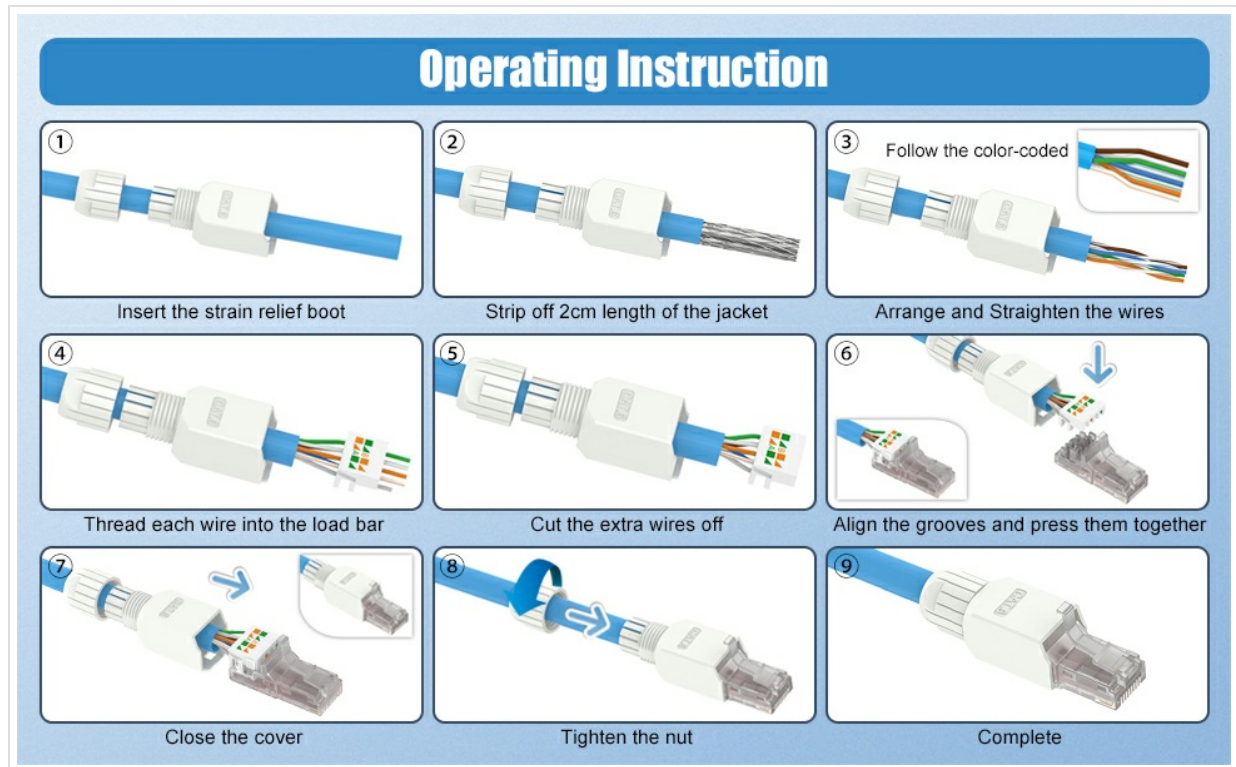


Image: Step-by-step visual instructions for the installation process of the tool-free RJ45 connector.

5. Operating Instructions

Once the VCELINK Tool-Free RJ45 Connector is successfully installed on your Ethernet cable, it functions as a standard RJ45 plug. Simply insert the terminated cable into any compatible RJ45 port on devices such as modems, personal computers, printers, routers, or servers. Ensure a firm connection is made to establish network communication.

6. Maintenance

To ensure optimal performance and longevity of your VCELINK RJ45 connectors:

- Keep the connectors clean and free from dust and debris.
- Avoid excessive bending or pulling on the cable near the connector to prevent damage to the internal wires or the connector itself.
- Store unused connectors in a dry, cool environment.

7. Troubleshooting

If you experience issues with your connection after installing the connector:

- **No Signal or Intermittent Connection:**
 - Use a cable tester (e.g., VCELINK GJ468 Network Cable Tester) to verify the integrity of the connection. The video demonstrates this process.
 - Check the wire arrangement on the load bar against the T568A or T568B color code. Ensure all wires are correctly seated and making contact.
 - If the connection is not successful, the tool-free design allows for easy disassembly and reinstallation. Carefully open the connector, re-arrange and re-trim the wires if necessary, and reassemble.
- **Slow Speed:**
 - Ensure your Ethernet cable is rated for CAT6 or CAT5E and is in good condition.
 - Verify that all network devices (router, switch, computer) support the desired speed (e.g., 1Gbps).

- Check for any kinks or damage along the length of the Ethernet cable.

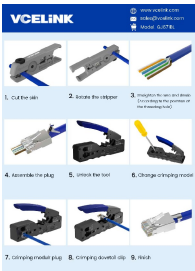

8. Specifications



Product Dimensions	2.06 x 0.57 x 0.52 inches
Item Model Number	KJ22-C6-24P-US
Manufacturer	VCELINK
Connector Type	Ethernet (RJ45)
Cable Type	Ethernet (CAT6/CAT5E)
Compatible Devices	Modem, Personal Computer, Printer, Router, Server
Special Feature	Data Transfer, High Speed, Lightweight

9. Warranty and Support

Customer experience is our top priority. If you have any issues or suggestions regarding your VCELINK Tool-Free RJ45 Connectors, please do not hesitate to contact us directly. Our support team is available to assist you.

Related Documents - KJ22-C6-24P-US

	<p>VCELINK GJ671BL RJ45 Crimping Tool Operation Guide</p> <p>Step-by-step instructions for using the VCELINK GJ671BL crimping tool to assemble RJ45 connectors for network cables, including CAT5 and CAT7.</p>
	<p>VCELINK 2025 Brand Product Brochure</p> <p>Explore the VCELINK 2025 Brand Product Brochure, featuring a comprehensive range of network accessories, hand tools, and brand services. Discover high-quality products designed for professionals and DIY enthusiasts alike, with a focus on innovation and customer satisfaction.</p>
	<p>VCELINK 2025 Brand Product Brochure: Networking Tools & Accessories</p> <p>Explore the comprehensive VCELINK 2025 Brand Product Brochure, featuring a wide range of high-quality networking tools, connectors, cables, wall plates, and audio/video accessories designed for professionals and DIY enthusiasts. Discover solutions for reliable connectivity and efficient installations.</p>

 The image shows the cover of the 'C6 Sysex Tool User's Manual'. At the top, it says 'C6 Sysex Tool User's Manual'. Below that, in smaller text, it says 'Copyright 1993', 'Elektron Music Systems, Ltd.', and 'No. 1, 10000, 10000, 10000, 10000'. There is a section titled 'INTRODUCTION' with several lines of small text. At the bottom, there is a small logo that says 'C6'.	<p>Elektron C6 Sysex Tool User's Manual</p> <p>User manual for the Elektron C6 Sysex Tool, a software utility for transferring MIDI System Exclusive (Sysex) data and audio samples between Elektron music devices and a computer. Covers system requirements, setup, software functions, and file format.</p>
 The image shows the cover of the 'KEB COMBICONTROL C6 ECON Instruction Manual'. At the top, it says 'COMBICONTROL'. Below that, there is a photograph of a KEB industrial PC unit. To the right of the photograph, it says 'C6'. At the bottom right, there is a logo that says 'KEB'.	<p>KEB COMBICONTROL C6 ECON Instruction Manual</p> <p>Explore the KEB COMBICONTROL C6 ECON series, a line of industrial PCs available with displays from 8.4" to 17.0". This manual provides detailed installation, technical specifications, operation, and maintenance guidance for these robust automation solutions.</p>