

podofo 7-inch 1080P HD IPS Touchscreen Car Stereo

Portable Wireless CarPlay Screen

USER MANUAL

Brand: podofo | Model: 7-inch 1080P HD IPS Touchscreen Car Stereo

1. INTRODUCTION

This manual provides comprehensive instructions for the installation, operation, and maintenance of your podofo Portable Wireless CarPlay Screen. This 7-inch 1080P HD IPS touchscreen car stereo offers seamless integration with Wireless CarPlay and Android Auto, enhancing your driving experience with smart navigation, communication, and entertainment features.

2. WHAT'S IN THE BOX

Please verify that all components are present before proceeding with installation.

- Portable Wireless Carplay Car Stereo
- AUX Cable
- Power Cord
- Monitor Base
- Bracket Fixing Sticker
- Bracket
- User Manual



Image: The portable car stereo unit, a power cable, and graphical representations of Wireless CarPlay and Wireless Android Auto functionality.

3. SETUP AND INSTALLATION

The podofu Portable Wireless CarPlay Screen is designed for simple installation, compatible with most vehicles (7-32V systems). No complex rewiring is required.

3.1 Mounting the Device

The device can be mounted seamlessly onto your vehicle's center console or dashboard using the provided suction cup mount or adhesive base. Ensure the mounting surface is clean and dry before attachment for optimal adhesion.

Support Rear Camera

HD High Definition 170° Wide Angle Waterproof Night Vision



10m/32.81ft

Not Include

Image: The portable car stereo unit securely mounted on a car's dashboard, demonstrating its placement and visibility.

3.2 Power Connection

Connect the provided power cord to the device and plug it into your vehicle's 12V power outlet (cigarette lighter socket). The device will power on automatically with the vehicle's ignition.

4. OPERATING INSTRUCTIONS

4.1 Wireless CarPlay and Android Auto

Pair your compatible iPhone or Android phone to the portable car stereo via Bluetooth to access phone contacts, email, notifications, map navigation, music, and more. This provides a convenient, hands-free experience with voice control while driving.

1. Ensure Bluetooth is enabled on your smartphone.
2. On the car stereo, navigate to the Bluetooth settings and search for available devices.
3. Select your phone from the list and confirm the pairing code on both devices.
4. Once paired, the system will automatically launch Wireless CarPlay or Android Auto.



Image: The main screen of the portable car stereo showing the Apple CarPlay interface with icons for Phone, Music, Maps, Messages, Now Playing, Smart Screen, Podcasts, and Audiobooks.

Android-Cast



Image: A visual guide illustrating the four steps to connect a smartphone to the portable car stereo for Wireless CarPlay functionality.

Newly Upgraded Bluetooth Connect to the Car Speaker



Image: A visual guide illustrating the four steps to connect a smartphone to the portable car stereo for Wireless Android Auto functionality.

4.2 Bluetooth and Navigation

The built-in Bluetooth allows for wireless music streaming and hands-free calling. While the car stereo itself does not support GPS, it integrates with your phone's navigation apps (e.g., Apple Maps, Google Maps, Waze) via CarPlay or Android Auto, displaying turn-by-turn directions on the screen.

Voice control & Gps Navigation



Hi, Siri call Tom.



Hi, Google call Jerry.



Hi, Siri open Pandora.



Google, Open Google Maps.

Image: The car stereo displaying navigation and media playback, alongside examples of voice commands for Siri and Google Assistant.



Image: A visual representation of Siri and Google Voice Control integration, showing how voice commands interact with the car stereo for navigation and other functions.

4.3 Audio Output Options

The device offers multiple ways to output audio to your car's speakers:

- **Upgraded Bluetooth Audio Output:** Directly connect to your car's Bluetooth system to transmit audio from CarPlay/Android Auto to the original car speakers for stable, high-quality stereo sound.
- **AUX Connection:** Use the provided AUX cable to connect the stereo to your car's AUX input.
- **FM Transmitter:** Transmit audio wirelessly to your car's FM radio by tuning both devices to the same FM frequency.
- **Built-in Speaker:** The unit has a built-in speaker for direct audio output.

Four Expressive Audio Outputs

Bluetooth



AUX Connection



FM Transmitter



Built-in Speaker



Image: A graphic illustrating the four available audio output methods for the car stereo: Bluetooth, AUX connection, FM transmitter, and the built-in speaker.



Image: A detailed graphic explaining the upgraded Bluetooth audio output feature, along with AUX, FM Transmitter, and Built-in Speaker options for sound transmission.

4.4 Mirror Link (AirPlay & Android Cast)

The device supports Mirror Link functionality, allowing you to cast content from your smartphone screen directly to the car stereo display. This includes video playback from various applications.

Play Videos with MirrorLink

Airplay and Android Cast



1024*600P



5Ghz WIFI



Play Videos



Image: The car stereo screen mirroring content from a smartphone, demonstrating the MirrorLink feature for video playback.

Backup Camera Input & Package List



Image: A visual guide illustrating the four steps to connect a smartphone to the portable car stereo for AirPlay functionality.

4.5 Rear Camera Support

The unit supports an HD backup camera (not included). When connected, the screen will automatically display the rear view when the vehicle is in reverse, providing a wide-angle, waterproof, and night vision capable display for safer parking.

Support Rear Camera



High Definition



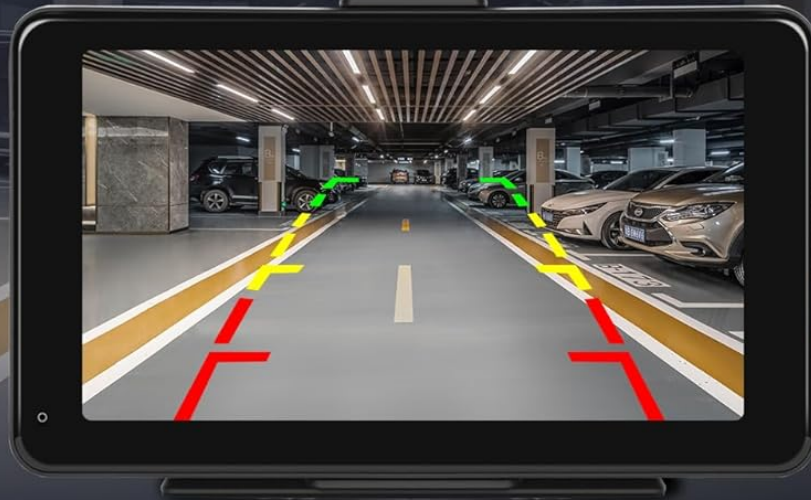
Wide Angle



Waterproof



Night Vision



10m/32.81ft



Not Include

Image: A diagram illustrating how an external rear camera connects to the car stereo, with the screen displaying the live camera feed for parking assistance.

4.6 Touchscreen Operation

The 7-inch IPS touchscreen with 1024x600 resolution provides intuitive control. You can adjust brightness and enable timed black screen standby for convenience.

7" HD Touch Screen



HD



Touch Screen



7 inch

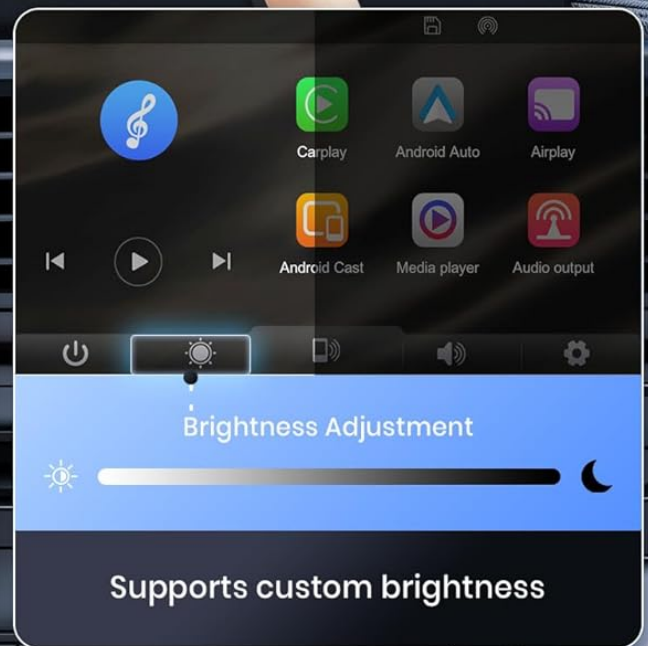
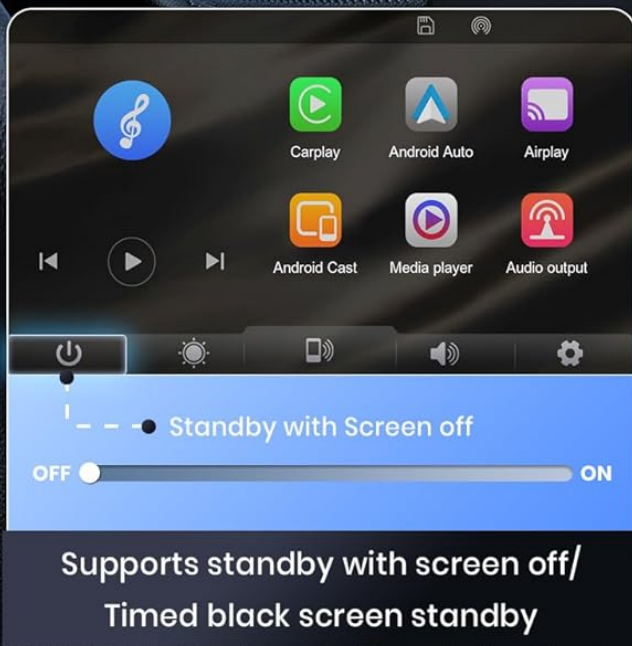


Image: The 7-inch HD touchscreen interface, demonstrating touch control and options for screen standby and brightness adjustment.

5. SPECIFICATIONS

Feature	Detail
Product Dimensions	7.4 x 2.8 x 4.9 inches
Item Weight	1.94 pounds

ASIN	B0C2TH11VG
Brand	podofu
Connectivity Technology	Bluetooth
Controller Type	iOS, Android
Special Feature	Touchscreen
Compatible Devices	Smartphone, Speaker
Connector Type	3.5mm Jack
Audio Output Mode	Stereo
Number of Channels	4
Output Wattage	45 Watts
Supported Internet Services	Maps
Visible Screen Diagonal	7" / 18 cm

6. TROUBLESHOOTING

If you encounter issues with your device, please refer to the following common problems and solutions:

- **No Power / Device Not Turning On:**

- Ensure the power cord is securely connected to both the device and the vehicle's 12V power outlet.
- Check if the vehicle's 12V power outlet is functioning (e.g., by plugging in another device).
- Verify that the supplied power adapter is used, as third-party adapters may cause erratic behavior or overheating.

- **Wireless CarPlay/Android Auto Not Connecting:**

- Ensure Bluetooth is enabled on your smartphone and the car stereo.
- Forget the device from your phone's Bluetooth settings and re-pair.
- Restart both the car stereo and your smartphone.
- Ensure your phone's operating system is up to date.

- **No Audio Output / Poor Sound Quality:**

- Check the selected audio output mode (Bluetooth, AUX, FM Transmitter, Built-in Speaker) on the car stereo.
- If using Bluetooth, ensure your car's original stereo is set to the correct Bluetooth input.
- If using FM Transmitter, ensure both devices are tuned to a clear, unused FM frequency.
- Verify the AUX cable is fully inserted into both the car stereo and your vehicle's AUX input.

- **Screen Freezing or Unresponsive:**

- Perform a soft reset by disconnecting the power for a few seconds and reconnecting.
- If the issue persists, contact customer support.

7. MAINTENANCE

To ensure the longevity and optimal performance of your podofu Portable Wireless CarPlay Screen, follow these simple maintenance guidelines:

- **Cleaning:** Use a soft, lint-free cloth to clean the screen and exterior. Do not use abrasive cleaners or solvents.
- **Temperature:** Avoid exposing the device to extreme temperatures, both hot and cold, for extended periods.
- **Storage:** If storing the device for a long time, disconnect it from power and store it in a cool, dry place.
- **Cables:** Handle all cables and connectors with care to prevent damage.

8. WARRANTY AND SUPPORT

podofu is committed to providing excellent customer service and support for your product.

- **Quick Reply:** Expect a quick reply to inquiries within 18 hours.
- **Return Policy:** Enjoy a 60-day no-worry return period.
- **Replacement:** Replacement options are available within 24 months of purchase.
- **Technical Support:** Lifetime after-sales consultation and technical support are provided.

For any questions or assistance, please do not hesitate to contact podofu customer service. We are dedicated to resolving any issues you may encounter.



Image: An overview of podofu's customer support commitments, including response times, return policy, replacement period, and lifetime technical support.