

## Jectse Jectseumk2a16og7-12

# Jectse 1080P Mini Security Camera User Manual

Model: Jectseumk2a16og7-12

## 1. INTRODUCTION

---

Thank you for choosing the Jectse 1080P Mini Security Camera. This compact and versatile camera is designed for various surveillance needs, featuring 1080P video recording, night mode, motion detection, and a built-in battery. Its magnetic design allows for flexible placement. Please read this manual carefully to ensure proper use and optimal performance of your device.

## 2. PACKAGE CONTENTS

---

Verify that all items are present in your package:

- Jectse Mini Security Camera
- Magnetic Mount
- USB Charging Cable
- User Manual (this document)



Image: The Jectse Mini Security Camera, its magnetic mount, and the USB charging cable included in the package.

### 3. CAMERA COMPONENTS

---

Familiarize yourself with the camera's physical features:

- **Lens:** Front-facing camera lens for video capture.
- **ON/OFF Button:** Powers the camera on or off.
- **MODE Button:** Switches between different operating modes.
- **Micro SD Card Slot:** For inserting a memory card to store recordings.
- **USB Charging Port:** For charging the internal battery and data transfer.
- **Indicator Lights:** Provide status feedback (e.g., power, recording, Wi-Fi).



Image: Top view of the camera highlighting the ON/OFF and MODE buttons.

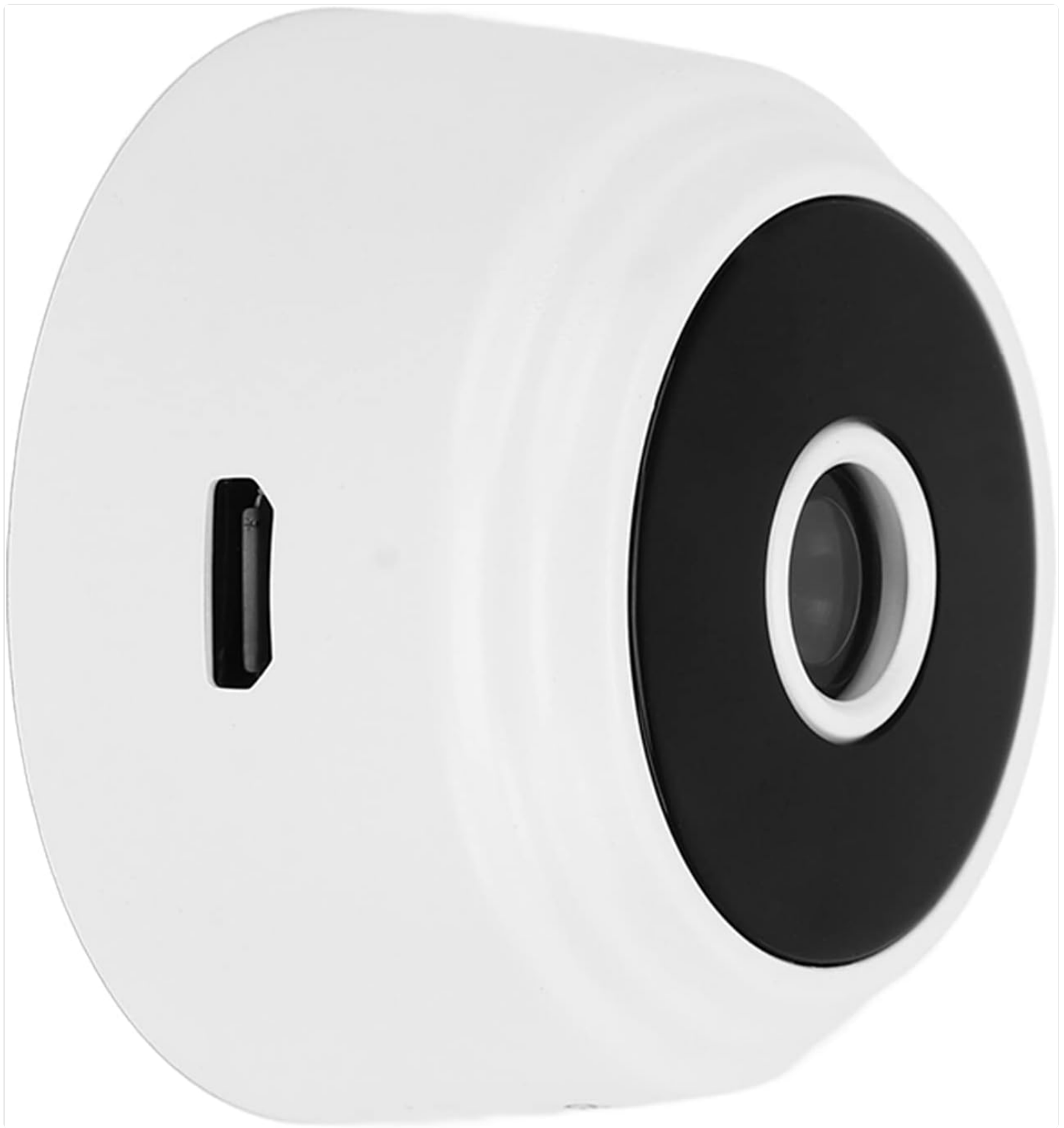


Image: Side view of the camera, indicating the Micro SD card slot.

## 4. SETUP

---

### 4.1 Charging the Camera

Before first use, fully charge the camera. Connect the USB charging cable to the camera's USB port and plug the other end into a 5V USB power adapter (not included) or a computer's USB port. The indicator light will show charging status and turn off or change color when fully charged. A full charge provides approximately 45 minutes of continuous operation.



Image: Side view of the camera, showing the USB charging port.

## 4.2 Inserting a Micro SD Card

The camera requires a Micro SD card (not included) for video storage. Insert the Micro SD card into the card slot with the gold contacts facing down until it clicks into place. Ensure the card is formatted to FAT32 for optimal compatibility. The camera supports up to 32GB Micro SD cards.

## 4.3 Powering On/Off

- **To Power On:** Press and hold the **ON/OFF** button for a few seconds until the indicator light illuminates.
- **To Power Off:** Press and hold the **ON/OFF** button again for a few seconds until the indicator light turns off.

## 4.4 App Installation and Wi-Fi Connection

To access advanced features and real-time viewing, download the companion application. Search for the 'YsxLite' app in your smartphone's app store (available for Android and iOS). Follow the in-app instructions to connect the camera to your Wi-Fi network. This typically involves:

1. Powering on the camera.
2. Opening the 'YsxLite' app and creating an account if necessary.
3. Selecting 'Add Device' and following the prompts to connect to the camera's Wi-Fi hotspot, then configuring it to join your home Wi-Fi network.

*Note: Some users have reported issues with the 'YsxLite' app. Ensure your app is updated to the latest version for best performance.*

## 5. OPERATING INSTRUCTIONS

---

### 5.1 Video Recording

The camera supports 1080P and 720P video recording. The default recording resolution is 1080P. To start recording, ensure a Micro SD card is inserted and the camera is powered on. Press the **MODE** button to cycle through recording modes. The indicator light will change to confirm the selected mode (refer to the app or specific indicator light patterns in the full manual for details).



Image: The mini camera is shown with multiple small preview images, illustrating its capability to capture different environments.

## 5.2 Night Vision

The camera is equipped with night vision capabilities, allowing it to record in low-light conditions. Night vision typically activates automatically when ambient light levels are insufficient. Refer to the app settings for manual control or sensitivity adjustments if available.

## 5.3 Motion Detection

The motion detection feature allows the camera to start recording automatically when movement is detected within its field of view. This helps conserve battery life and storage space. Activate and configure motion detection sensitivity through the 'YsxLite' app. When motion is detected, the camera will begin recording and may send an alert to your smartphone if configured.

## 5.4 Magnetic Mounting

The camera features a built-in magnet, allowing it to be easily attached to any ferrous metal surface. Use the included magnetic mount for more versatile positioning on non-metallic surfaces. Ensure the camera is securely attached to prevent accidental falls.

# 6. MAINTENANCE

## 6.1 Cleaning

Wipe the camera lens and body with a soft, dry cloth. Avoid using liquid cleaners or abrasive materials, as they may damage the lens or casing.

## 6.2 Battery Care

To prolong battery life, avoid exposing the camera to extreme temperatures. If storing the camera for an extended period, charge it to approximately 50% every few months.

## 6.3 Storage

Store the camera in a cool, dry place away from direct sunlight and moisture when not in use.

# 7. TROUBLESHOOTING

Problem	Possible Cause	Solution
Camera does not power on.	Low battery; faulty charging cable/adapter.	Charge the camera fully. Try a different USB cable or power adapter.
Cannot connect to Wi-Fi or app.	Incorrect Wi-Fi password; camera too far from router; app issues.	Ensure correct Wi-Fi password. Move camera closer to router. Restart camera and router. Update 'YsxLite' app or reinstall.
No recording or corrupted files.	No Micro SD card; card full or corrupted; incorrect card format.	Insert a Micro SD card. Format the card to FAT32. Replace the card if corrupted.
Short battery life.	Continuous recording; frequent motion detection; cold environment.	Optimize recording settings. Reduce motion detection sensitivity. Ensure camera is not in extreme cold.
Poor video quality.	Dirty lens; low light conditions; incorrect resolution setting.	Clean the camera lens. Ensure adequate lighting or enable night vision. Check resolution settings in the app.

# 8. SPECIFICATIONS

Feature	Detail
---------	--------

Feature	Detail
Model Name	Jectseumk2a16og7-12
Video Capture Resolution	1080p, 720p
Connectivity Technology	Wireless (Wi-Fi)
Power Source	Battery Powered (Built-in 240 mAh)
Battery Life	Approximately 45 minutes (continuous recording)
Special Features	Motion Sensor, Night Vision
Indoor/Outdoor Usage	Outdoor (IP65 International Protection Rating)
Compatible Devices	Smartphone (Android, iOS via 'YsxLite' app)
Mounting Type	Wall Mount, Magnetic
Storage	Micro SD Card (up to 32GB, not included)
Material	Acrylonitrile Butadiene Styrene (ABS)
Item Weight	2.11 ounces
Color	White

## 9. WARRANTY AND SUPPORT

For warranty information and technical support, please refer to the documentation provided with your purchase or contact Jectse customer service through the retailer where the product was purchased. Keep your proof of purchase for warranty claims.