

Manuals+

[Q & A](#) | [Deep Search](#) | [Upload](#)

manuals.plus /

> [BIO IONIC](#) /

> [Bio Ionic Smart-X High-Efficiency Hair Dryer with Diffuser Instruction Manual](#)

BIO IONIC ZDRYERHEWD

Bio Ionic Smart-X High-Efficiency Hair Dryer with Diffuser

Model: ZDRYERHEWD

INTRODUCTION

Thank you for choosing the Bio Ionic Smart-X High-Efficiency Hair Dryer. This advanced hair dryer is designed to provide faster drying with less heat, promoting healthier hair. It features smart and customizable settings, including three heat and three speed options, a cool shot, and a self-cleaning function. This manual provides essential information for safe and effective use of your new appliance.

IMPORTANT SAFETY INFORMATION

Please read all instructions before using this appliance. Keep away from water.

- Do not use this appliance near bathtubs, showers, basins, or other vessels containing water.
- Always unplug the appliance immediately after use.
- Do not use while bathing or in the shower.
- Do not place or store appliance where it can fall or be pulled into a tub or sink.
- Do not place in or drop into water or other liquid.
- If an appliance falls into water, unplug it immediately. Do not reach into the water.
- Close supervision is necessary when this appliance is used by, on, or near children or individuals with certain disabilities.
- Never operate this appliance if it has a damaged cord or plug, if it is not working properly, or if it has been dropped or damaged, or dropped into water.
- Keep the cord away from heated surfaces. Do not wrap the cord around the appliance.

PRODUCT OVERVIEW

The Bio Ionic Smart-X Hair Dryer is engineered for efficiency and hair health. It comes with essential attachments for versatile styling.

Dries hair 75% faster*

with more air and less heat.



Figure 1: Bio Ionic Smart-X Hair Dryer with key features highlighted. This image shows the dryer unit, the concentrator nozzle attached, and callouts for its lightweight design, self-cleaning micro-filter, lock button, moisturizing heat technology, and 3 heat/3 speed settings.

Components:

- **Hair Dryer Unit:** The main body of the appliance with controls.
- **Concentrator Nozzle:** For precise airflow and smooth styling.
- **Diffuser:** For gentle drying, defining curls, and reducing frizz.



Figure 2: Close-up view of the concentrator nozzle, designed for focused airflow during styling.



Figure 3: Close-up view of the diffuser attachment, featuring tapered fingers to gently separate curls and create defined texture.

SETUP

1. **Attach Accessories:** To attach the concentrator nozzle or diffuser, align the attachment with the front of the dryer and gently push until it clicks into place. Ensure it is securely fastened before use.
2. **Power Connection:** Plug the hair dryer into a standard electrical outlet. Ensure the voltage matches the appliance's requirements.

OPERATING INSTRUCTIONS

The Bio Ionic Smart-X Hair Dryer offers intuitive controls for personalized styling.

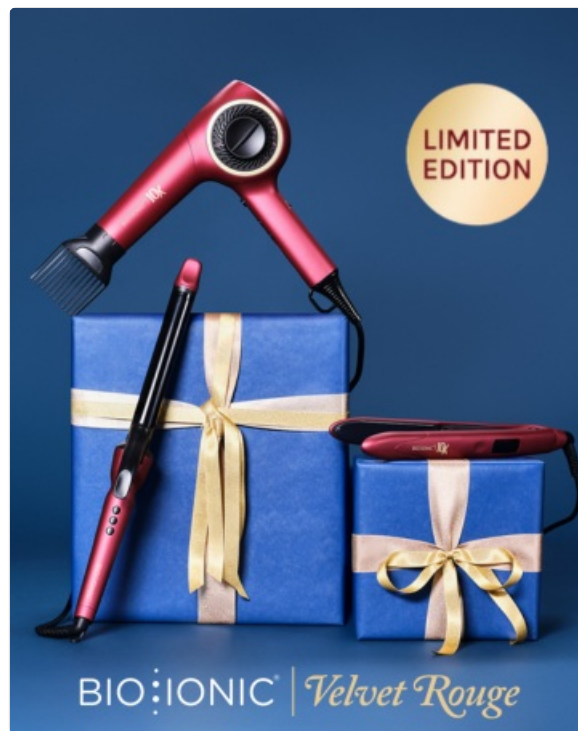


Figure 4: Detailed view of the control panel, showing buttons for heat settings, speed settings, and the cool shot function.

- **Power On/Off:** Use the main power switch located on the handle to turn the dryer on or off.
- **Heat Settings:** Select from three heat settings (low, medium, high) using the dedicated heat control buttons. Red indicator lights will show the selected level.
- **Speed Settings:** Choose from three airflow speed settings (low, medium, high) using the dedicated speed control buttons. Blue indicator lights will show the selected level.
- **Cool Shot:** Press and hold the snowflake button for a burst of cool air to set your style.
- **Lock Function:** Activate the lock function to prevent accidental changes to heat and speed settings during use. This is typically a small switch near the power button.

Styling Tips:

- **Using the Concentrator:** For smooth, sleek styles, attach the concentrator nozzle. Direct the airflow down the hair shaft while brushing to achieve desired results.
- **Using the Diffuser:** For curly or wavy hair, attach the diffuser. Gently cup sections of hair in the diffuser bowl and lift towards the scalp. Use low to medium heat and speed to define curls and minimize frizz.



Figure 5: A woman demonstrating the use of the diffuser attachment to enhance natural curls.



Figure 6: A visual comparison showing hair before and after styling with the Bio Ionic Smart-X Hair Dryer, demonstrating improved smoothness and reduced frizz.

Official Product Overview Video:

Video 1: An official overview of the Bio Ionic Smart-X Hair Dryer, showcasing its features and benefits from the manufacturer.

MAINTENANCE

Proper maintenance ensures the longevity and optimal performance of your Bio Ionic Smart-X Hair Dryer.

- **Self-Cleaning Function:** The dryer features a self-cleaning micro-filter. Refer to the specific instructions in your quick start guide for activating this function, which reverses airflow to clear dust and debris from the filter.
- **Regular Filter Cleaning:** Even with the self-cleaning function, periodically check and manually clean the micro-filter at the rear of the dryer to ensure unrestricted airflow. A clogged filter can reduce efficiency and potentially damage the motor.
- **Storage:** Store the dryer in a cool, dry place. Do not wrap the cord tightly around the appliance, as this can damage the cord.

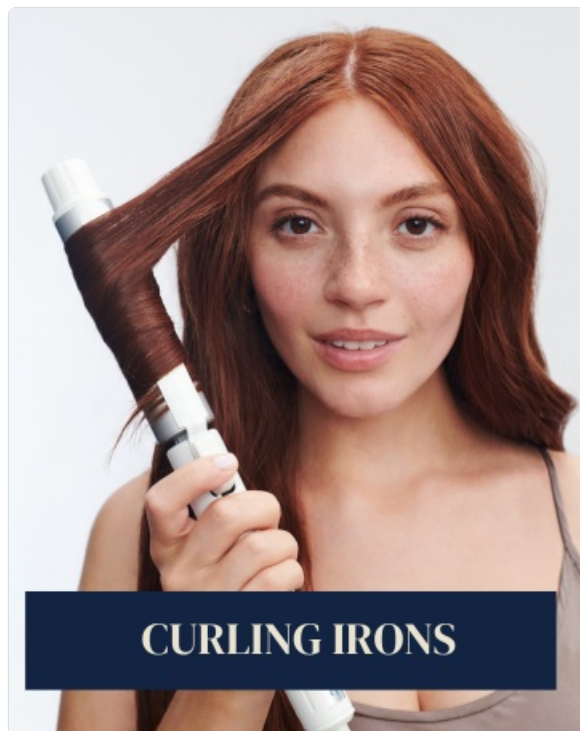


Figure 7: Close-up of the self-cleaning micro-filter located at the rear of the hair dryer, crucial for maintaining performance and preventing motor damage.

TROUBLESHOOTING

Problem	Possible Cause	Solution
Dryer does not turn on.	No power, faulty outlet, or internal issue.	Check power outlet, ensure plug is fully inserted. If still not working, contact customer support.
No heat or reduced heat.	Heat setting too low, or internal heating element issue.	Increase heat setting. If problem persists, contact customer support.
Reduced airflow.	Clogged air intake filter.	Clean the micro-filter at the rear of the dryer. Use the self-cleaning function if available.
Dryer makes unusual noise.	Debris in the motor or fan.	Perform self-cleaning function. If noise continues, discontinue use and contact customer support.

SPECIFICATIONS

- **Product Dimensions:** 11.41 x 11.41 x 4.33 inches
- **Weight:** 3.15 Pounds
- **Item Model Number:** ZDRYERHEWD
- **UPC:** 736658490299, 736658490282
- **Manufacturer:** Beauty By Imagination (Bio Ionic)
- **Special Features:** Adjustable, Ionic, Self Cleaning
- **Handle Material:** Plastic
- **Color:** Blue

WARRANTY AND SUPPORT

The Bio Ionic Smart-X Hair Dryer comes with a **10-year warranty**, ensuring long-term reliability and customer satisfaction. For warranty claims, technical support, or any product-related inquiries, please contact Beauty By Imagination (Bio Ionic) customer service.

Contact Information: Please refer to the contact details provided on the product packaging or the official Bio Ionic website for the most up-to-date support information.