

Manuals+

[Q & A](#) | [Deep Search](#) | [Upload](#)

[manuals.plus](#) /

› [AUTO-VOX](#) /

› [AUTO-VOX AD2 Dual Dash Cam Front and Rear FHD 1080P@30fps, Dash Camera for Cars with GPS Tracking, Loop Recording User Manual](#)

AUTO-VOX AD2

AUTO-VOX AD2 Dual Dash Cam User Manual

Model: AD2

Brand: AUTO-VOX

1. INTRODUCTION

The AUTO-VOX AD2 Dual Dash Cam is designed to record your driving journey with high-definition video from both front and rear perspectives. This manual provides detailed instructions for installation, operation, maintenance, and troubleshooting to ensure optimal performance of your device.



Image 1.1: The AUTO-VOX AD2 Dual Dash Cam, showing the main unit, rear camera, and a smartphone displaying the companion app interface.



Dual 1080P



IMX 307



Wifi



Touch screen

Image 1.2: Key features of the AD2 Dash Cam, including Dual 1080P recording, Sony IMX 307 sensor, Wi-Fi connectivity, and a touch screen interface.

2. WHAT'S IN THE BOX

Please verify that all components are present upon opening the package:

- Dash Cam (Main Unit with GPS)
- Backup Camera
- Car Charger Line
- Video Cable
- Auxiliary Tool + Clamps (x5)
- 3M Glue (x2)
- Electrostatic Film (x2)
- User Manual

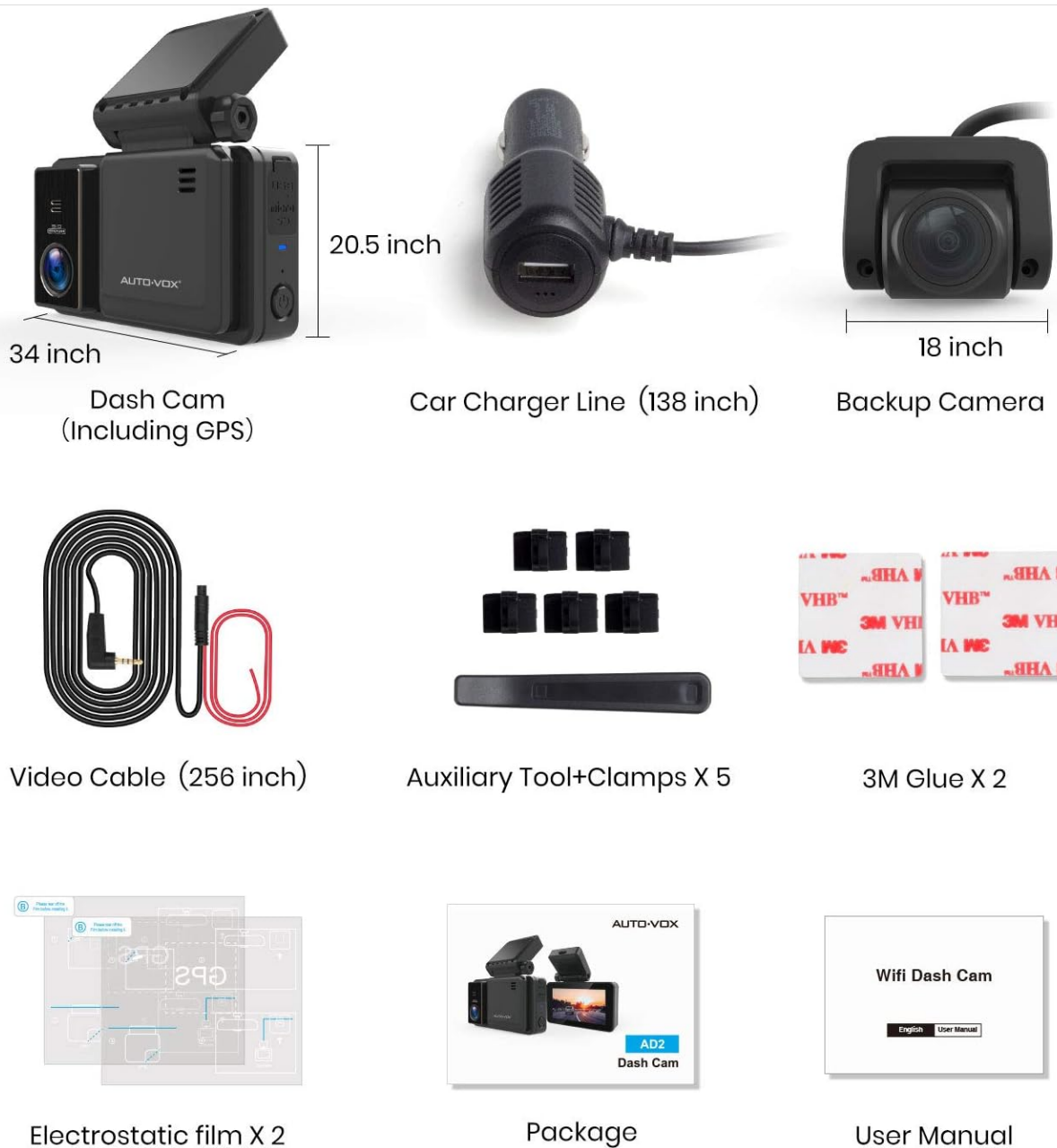


Image 2.1: All items included in the AUTO-VOX AD2 Dual Dash Cam package.

3. SETUP AND INSTALLATION

3.1 Preparing for Installation

1. Ensure the vehicle's engine is off.
2. Clean the windshield area where the dash cam will be mounted.
3. Insert a compatible MicroSD card (not included) into the main dash cam unit.

3.2 Front Dash Cam Installation

1. Apply one of the electrostatic films to the desired mounting location on your front windshield, ensuring it is clean and dry. This helps with adhesion and removal.
2. Attach the main dash cam unit to the electrostatic film using the provided 3M adhesive. Ensure the camera lens has a clear view of the road.

3. Route the power cable from the dash cam to your vehicle's 12V power outlet (cigarette lighter socket). Use the auxiliary tool and clamps to neatly tuck the cable along the windshield trim and dashboard.



Image 3.1: Example of front dash cam and rear camera mounting positions for optimal view.

3.3 Rear Camera Installation

1. Identify a suitable location on your rear window for the backup camera. This can be inside the vehicle, avoiding external exposure to theft or rain.
2. Clean the chosen area thoroughly. Apply the second electrostatic film, then attach the rear camera using the remaining 3M adhesive.
3. Connect the rear camera to the main dash cam unit using the provided video cable. Route this cable discreetly along the vehicle's interior trim to the front unit.



Image 3.2: Simplified diagram illustrating the non-destructive and DIY-friendly installation process.

4. OPERATING INSTRUCTIONS

4.1 Powering On/Off

- The dash cam will automatically power on and begin recording when the vehicle's ignition is turned on (and power is supplied to the 12V outlet).
- It will automatically power off when the ignition is turned off.
- To manually power on/off, press and hold the power button located on the side of the unit.

4.2 Basic Recording

- The dash cam records continuously in a loop. When the memory card is full, the oldest unlocked footage will be overwritten by new recordings.
- Both front and rear cameras record simultaneously in 1080P Full HD.

4.3 G-Sensor (Emergency Recording)

The built-in G-Sensor detects sudden impacts or collisions. When an event is detected, the current video segment is automatically locked and saved to a protected folder on the memory card. This footage will not be overwritten by loop recording, preserving critical evidence.

WiFi Connection



Image 4.1: The G-sensor automatically locks video footage upon detecting a collision, securing important evidence.

4.4 Wi-Fi Connection and App Usage

The AD2 dash cam features Wi-Fi connectivity, allowing you to connect your smartphone via the dedicated app (Roadcam APP, available on App Store and Google Play). This enables live view, video playback, downloading footage, and adjusting settings directly from your phone.

1. Download and install the "Roadcam" app on your smartphone.
2. On the dash cam, navigate to the Wi-Fi settings and enable Wi-Fi. The screen will display the Wi-Fi network name (SSID) and password.
3. On your smartphone, go to Wi-Fi settings, find the dash cam's SSID, and connect using the provided password.
4. Open the Roadcam app. You should now be able to view live footage, access recorded videos, and manage settings.

Built-in G-sensor

Lock emergency video and keep key evidence

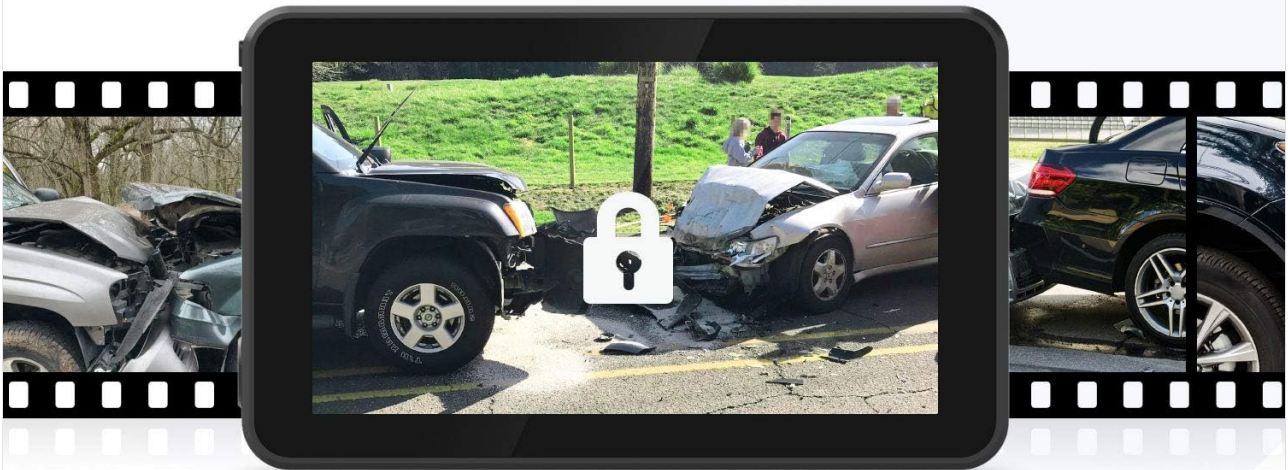


Image 4.2: Connecting the dash cam to a smartphone via Wi-Fi for easy access to recordings and settings.

4.5 GPS Tracking

The built-in GPS module records your vehicle's speed and location data along with the video footage. This information can be viewed during playback using a compatible GPS player software on a computer, providing a comprehensive record of your journey.



5. MAINTENANCE

5.1 Cleaning the Device

- Use a soft, dry cloth to clean the dash cam's body and screen.
- For lenses, use a specialized lens cleaning cloth to avoid scratches. Do not use abrasive cleaners or solvents.

5.2 Memory Card Management

- Regularly format the MicroSD card (at least once a month) within the dash cam's settings to ensure optimal performance and prevent data corruption.
- Back up any important footage before formatting.

5.3 Temperature Resistance

The AD2 dash cam is designed to operate reliably in a wide range of temperatures, from -20°C to 60°C (-4°F to 140°F). This ensures consistent performance in various climate conditions.

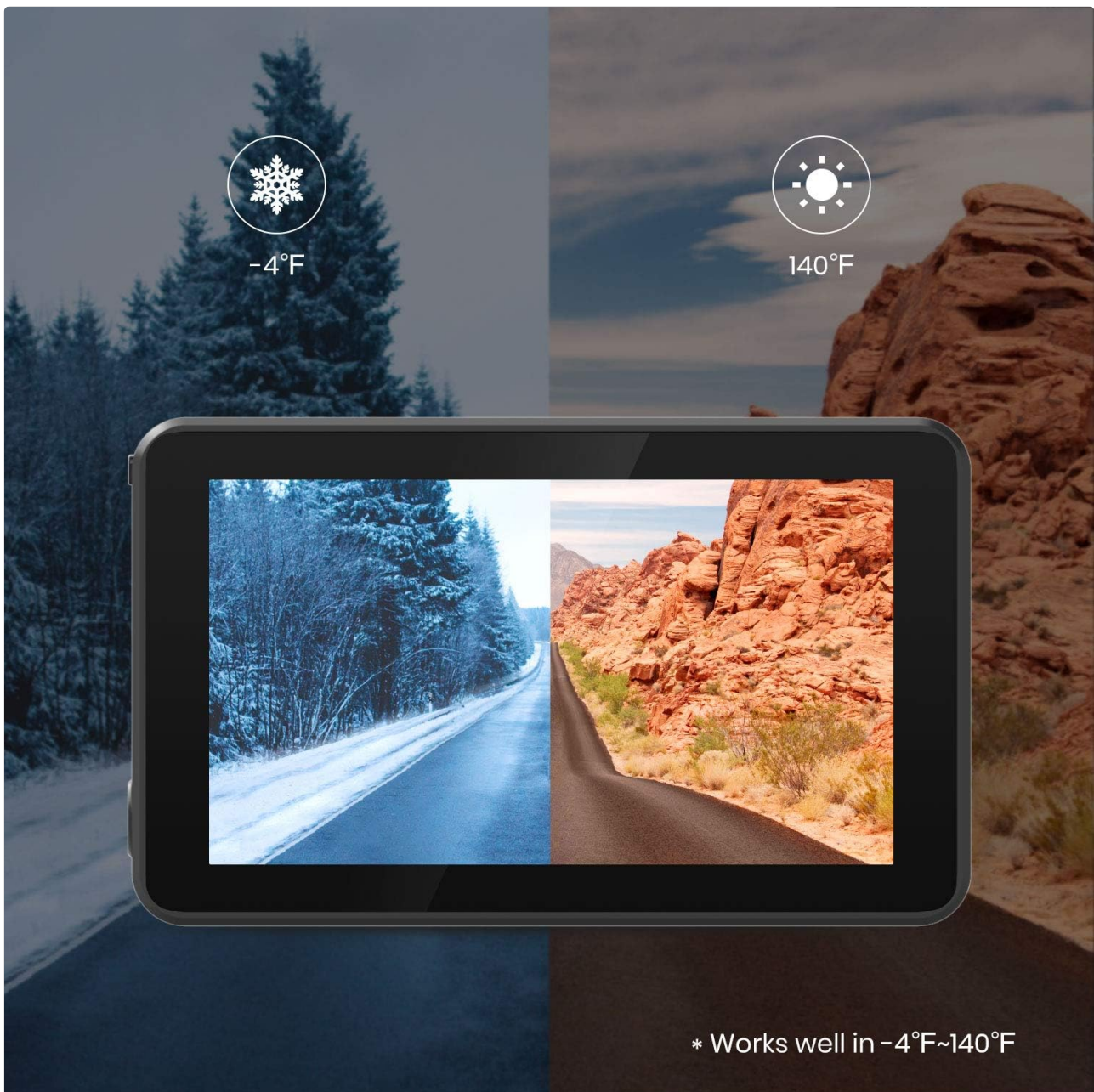


Image 5.1: The dash cam is built to withstand extreme temperatures, from cold winter environments to hot summer conditions.

6. TROUBLESHOOTING

Problem	Possible Cause / Solution
Dash cam does not power on.	Check the power connection to the 12V outlet. Ensure the vehicle's ignition is on. Test the power cable and outlet with another device.
Recording stops or footage is corrupted.	The MicroSD card may be full or corrupted. Format the card within the dash cam settings. Ensure you are using a high-speed (Class 10 or U1/U3) MicroSD card.
Wi-Fi connection issues.	Ensure Wi-Fi is enabled on the dash cam. Restart both the dash cam and your smartphone. Verify the correct Wi-Fi password is entered.

Problem	Possible Cause / Solution
Poor video quality.	Clean the camera lenses. Ensure the protective film has been removed from the lenses. Check settings to confirm 1080P resolution is selected.
G-Sensor is too sensitive/not sensitive enough.	Adjust the G-Sensor sensitivity setting in the dash cam's menu.

7. SPECIFICATIONS

Feature	Detail
Model Name	AD2
Video Capture Resolution	1080p (Front & Rear)
Field Of View	120 Degrees
Display	3" HD IPS Touch Screen
Connectivity Technology	USB, Wireless (Wi-Fi)
Mounting Type	Windshield Mount
Operating Temperature	-20°C to 60°C (-4°F to 140°F)
Item Weight	1.34 pounds
Product Dimensions	6.7 x 3.7 x 4.7 inches
Batteries	1 Lithium Ion batteries required (included)

8. WARRANTY AND SUPPORT

AUTO-VOX products are designed for reliability and performance. For information regarding product warranty, please refer to the warranty card included in your product packaging or visit the official AUTO-VOX website.

For technical support, troubleshooting assistance, or any inquiries not covered in this manual, please contact AUTO-VOX customer service through their official channels. Contact information can typically be found on the product packaging or the official brand website.

Please retain your proof of purchase for warranty claims.

