

## Walimex Pro Emerger 200

# Walimex pro Emerger 200 Studio Flash Instruction Manual

Model: Emerger 200 (Item No. 23356)

## 1. INTRODUCTION

The Walimex pro Emerger 200 is a lightweight and compact studio flash designed for both beginners and ambitious photographers. It features a high-quality finish and offers powerful performance for studio and location photography. This manual provides essential information for the safe and effective use of your Emerger 200 studio flash.

Key features include:

- 200Ws flash power, continuously adjustable from 1/1 to 1/32.
- Dimmable 25 Watt LED modeling light.
- Extremely short charging time of 0.2-0.9 seconds.
- Integrated 2.4 GHz receiver with 16 channels and 4 groups for wireless control.
- Bowens/Walimex pro bayonet connection for a wide range of light shapers.
- Quiet fan cooling for extended operation.

## 2. Box CONTENTS

Please check the package contents upon receipt to ensure all items are present and undamaged. If any items are missing or damaged, please contact your retailer.

- 1x Walimex pro Emerger 200 Studio Flash with LED modeling lamp
- 1x Standard Reflector
- 1x Power Cable (4 meters)
- 1x Synchronization Cable (4 meters)
- 1x Flash Tube
- 1x Protective Cap

**1x EMERGER 200  
STUDIOBLITZ****1x STANDARDREFLEKTOR****1x NETZKABEL****1x SCHUTZKAPPE****1x SYNCHROKABEL**

Image: Overview of the Walimex pro Emerger 200 Studio Flash package contents, including the flash unit, standard reflector, power cable, sync cable, flash tube, and protective cap.

### 3. SETUP

Follow these steps to set up your Walimex pro Emerger 200 studio flash:

1. **Unpacking:** Carefully remove all components from the packaging.
2. **Attaching the Standard Reflector:** Align the three pins on the standard reflector with the corresponding slots on the flash unit's bayonet mount. Insert the reflector and twist clockwise until it locks securely into place.
3. **Mounting on a Light Stand:** Attach the flash unit to a compatible light stand using the integrated mounting bracket. Secure it firmly with the locking knob. Adjust the tilt angle as needed.
4. **Connecting Power:** Insert the power cable into the power input socket on the rear of the flash unit. Connect the other end to a suitable power outlet.
5. **Connecting Synchronization Cable (Optional):** If using a wired sync connection, plug the synchronization cable into the sync port on the flash unit and connect the other end to your camera's PC sync port or a compatible trigger.



Image: The Walimex pro Emerger 200 Studio Flash with its standard reflector, ready for mounting on a light stand.

## 4. OPERATING INSTRUCTIONS

This section details the basic operation of your Emerger 200 studio flash.

### 4.1 Power On/Off

Press the main power button located on the control panel to turn the flash unit on or off. The display will illuminate upon power-on.

### 4.2 Adjusting Flash Power

The flash power can be adjusted continuously from 1/1 (full power) to 1/32. Use the control dial or buttons on the control panel to increase or decrease the flash output. The current power setting will be shown on the digital display.

### 4.3 Using the LED Modeling Light

The Emerger 200 features a dimmable 25 Watt LED modeling light. Press the dedicated modeling light button to toggle it on/off. Use the control dial to adjust its brightness. The modeling light helps visualize the lighting effect before taking a shot.

## 4.4 Wireless Control

The integrated 2.4 GHz receiver allows for wireless control using an optional radio trigger (e.g., Walimex pro item no. 19899). The system supports 16 channels and 4 groups, enabling individual or simultaneous control of multiple flash units.

- **Setting Channel and Group:** Refer to the radio trigger's manual for instructions on setting channels and groups. Ensure the flash unit and trigger are set to the same channel and group for proper communication.
- **Triggering:** Once synchronized, the flash can be triggered remotely via the radio trigger.

## 4.5 Accessory Compatibility

The Bowens/Walimex pro bayonet mount allows for quick attachment and detachment of various light modifiers such as softboxes, beauty dishes, and snoots. To attach an accessory, align it with the bayonet mount, insert, and twist clockwise until it clicks into place. To remove, press the release button and twist counter-clockwise.

### PRODUKTDDETAILS

walimex<sup>pro</sup>

#### HOCHWERTIGE VERARBEITUNG & KOMFORTABLER EINSATZ



##### Modernes LED-Einstelllicht

Mit modernem 25 Watt LED-Einstelllicht. Durch den neuen Standardreflektor wird eine bessere Lichtausbeute und eine gleichmäßigere Ausleuchtung erreicht.



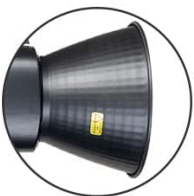
##### Einfache Bedienung

Leichter und kompakter Studioblitz für ambitionierte Hobbyfotografen – benutzerfreundlich und super einfach steuerbar



##### Vielfältige Kompatibilität

Dank praktischer Bowens/ walimex pro Bajonettanschluss kompatibel zu jeder Menge Equipment



##### Leistungsstark und modern

Blitzleistung 200 Ws, stufenlos regelbar von 1/1 bis 1/32, extrem kurze Wiederaufladezeit und sehr leise Gebläsekühlung



UNTERNEHMEN AUS DEUTSCHLAND

Image: Close-up of the Walimex pro Emerger 200 highlighting its modern LED modeling light, easy-to-use control panel, versatile Bowens/Walimex pro compatibility, and powerful flash output.

## UNIVERSELL &amp; PRODUKTÜBERGREIFEND EINSETZBAR



**Stativ**  
z.B. FT-8051  
Lampenstativ 260cm



**Studioblitz Auslöser**



**Softboxen**  
z. B. Softbox 60x90cm



und vieles mehr!

Image: Illustration of the Walimex pro Emerger 200's compatibility with tripods, studio flash triggers, and softboxes, demonstrating its versatility with a wide range of equipment.

## 5. MAINTENANCE

Proper maintenance ensures the longevity and optimal performance of your studio flash.

- **Cleaning:** Disconnect the flash from power before cleaning. Use a soft, dry cloth to wipe the exterior. For stubborn dirt, a slightly damp cloth can be used, followed by a dry one. Do not use harsh chemicals or abrasive cleaners. Keep the flash tube and modeling light clean and free of dust.
- **Storage:** Store the flash unit in a dry, dust-free environment when not in use. Attach the protective cap to the flash tube to prevent damage.
- **Flash Tube Replacement:** The flash tube is a consumable part. If it fails or its performance degrades, it can be replaced. Ensure the unit is unplugged and cooled down before attempting replacement. Consult a qualified technician if you are unsure about the procedure.
- **Ventilation:** Ensure the ventilation openings are clear and not obstructed during operation to allow for proper cooling by the internal fan.

## 6. TROUBLESHOOTING

If you encounter issues with your Walimex pro Emerger 200, refer to the following common problems and solutions:

• **Flash Not Firing:**

- Check if the unit is powered on and connected to a power source.
- Ensure the flash tube is correctly installed and not damaged.
- Verify that the wireless trigger (if used) is powered on, set to the correct channel and group, and within range.
- Check the synchronization cable connection if using a wired setup.
- Allow sufficient time for the flash to recycle after a previous shot.

• **Modeling Light Not Working:**

- Ensure the flash unit is powered on.
- Press the modeling light button to toggle it on.
- Check the brightness setting; it might be set to minimum.

• **Inconsistent Flash Output:**

- Ensure the flash power setting is stable and not accidentally changed.
- Check for any obstructions in front of the flash tube or reflector.
- Allow adequate recycling time between flashes, especially at higher power settings.

• **Overheating Warning:**

- The unit has fan cooling, but continuous rapid firing at high power can still lead to overheating. If an overheating warning appears, stop firing and allow the unit to cool down.
- Ensure ventilation openings are not blocked.

If the problem persists after attempting these solutions, please contact customer support.

## 7. SPECIFICATIONS

Feature	Specification
Model Number	23356
Flash Power	200 Ws
Power Adjustment	1/1 to 1/32 (continuous)
Modeling Light	25W LED, dimmable
Charging Time	0.2 - 0.9 seconds
Wireless Control	2.4 GHz, 16 Channels, 4 Groups
Flash Sync Speed	1/1200 s
Mount Type	Bowens / Walimex pro bayonet
Cooling	Fan cooling

Product Dimensions	50 x 29 x 22 cm
Product Weight	1.7 kg (unit only) / 2.9 kg (packaged)
Manufacturer	Walser GmbH

## ABMESSUNGEN

**walimex<sup>pro</sup>**



**Gewicht 1,69 KG**



Image: Visual representation of the Walimex pro Emerger 200 Studio Flash dimensions: 30 cm length, 12.5 cm width, 12.5 cm height, and a weight of 1.69 kg.

## 8. WARRANTY AND SUPPORT

The Walimex pro Emerger 200 Studio Flash comes with a manufacturer's warranty. Please refer to the warranty card included in your packaging or visit the Walimex Pro official website for detailed warranty terms and conditions. For technical support, troubleshooting assistance beyond this manual, or inquiries about spare parts, please contact your retailer or the Walimex Pro customer service department. Contact information can typically be found on the manufacturer's website or your purchase documentation.

