

## Teleflex 84513

# Teleflex Boat Speedometer User Manual

Model: 84513 | Premier Pro Black 65 MPH

## 1. INTRODUCTION

Thank you for choosing the Teleflex Premier Pro Black 65 MPH Boat Speedometer. This instrument is designed for marine applications, providing accurate speed readings up to 65 MPH. This manual will guide you through the proper installation, operation, and care of your new speedometer.

### 1.1 Package Contents

- Teleflex Premier Pro Black 65 MPH Speedometer (Part Number: 84513)
- Mounting Bracket

*Note: Hardware and a detailed installation manual are not included with the product as supplied by some retailers. This document serves as a general guide.*

## 2. SAFETY INFORMATION

Always observe the following safety precautions during installation and operation:

- Ensure the boat's power is disconnected before beginning any installation work to prevent electrical shock.
- Wear appropriate personal protective equipment, such as safety glasses and gloves.
- Verify all connections are secure and properly insulated to prevent short circuits.
- Consult a qualified marine technician if you are unsure about any part of the installation process.

## 3. SETUP AND INSTALLATION

### 3.1 Pre-Installation Check

Before installation, ensure you have the necessary tools and that the mounting location is suitable. The speedometer requires an approximate 3 1/4 inch (8.26 cm) diameter cutout.

### 3.2 Mounting Instructions

1. Identify a suitable location on your boat's dashboard or panel for the speedometer.

2. Using a hole saw, create a 3 1/4 inch (8.26 cm) diameter cutout at the chosen location.
3. Insert the speedometer into the cutout from the front of the panel.
4. Secure the speedometer using the provided mounting bracket on the rear of the panel. Tighten the nuts evenly until the gauge is firmly in place.



Figure 1: Front view of the Teleflex Premier Pro Black 65 MPH Speedometer. It features a black face, white needle, and blue and white graphics, with a domed lens and black bezel.

### 3.3 Electrical and Pitot Connections

The speedometer has (2) male spade terminals for electrical connections and (1) pitot connection for speed sensing.

1. Connect the positive (+) 12V DC power wire to one of the male spade terminals.
2. Connect the negative (-) ground wire to the other male spade terminal.
3. Connect the pitot tube from your boat's pitot pickup to the pitot connection on the back of the speedometer. Ensure the tube is free of kinks and blockages.

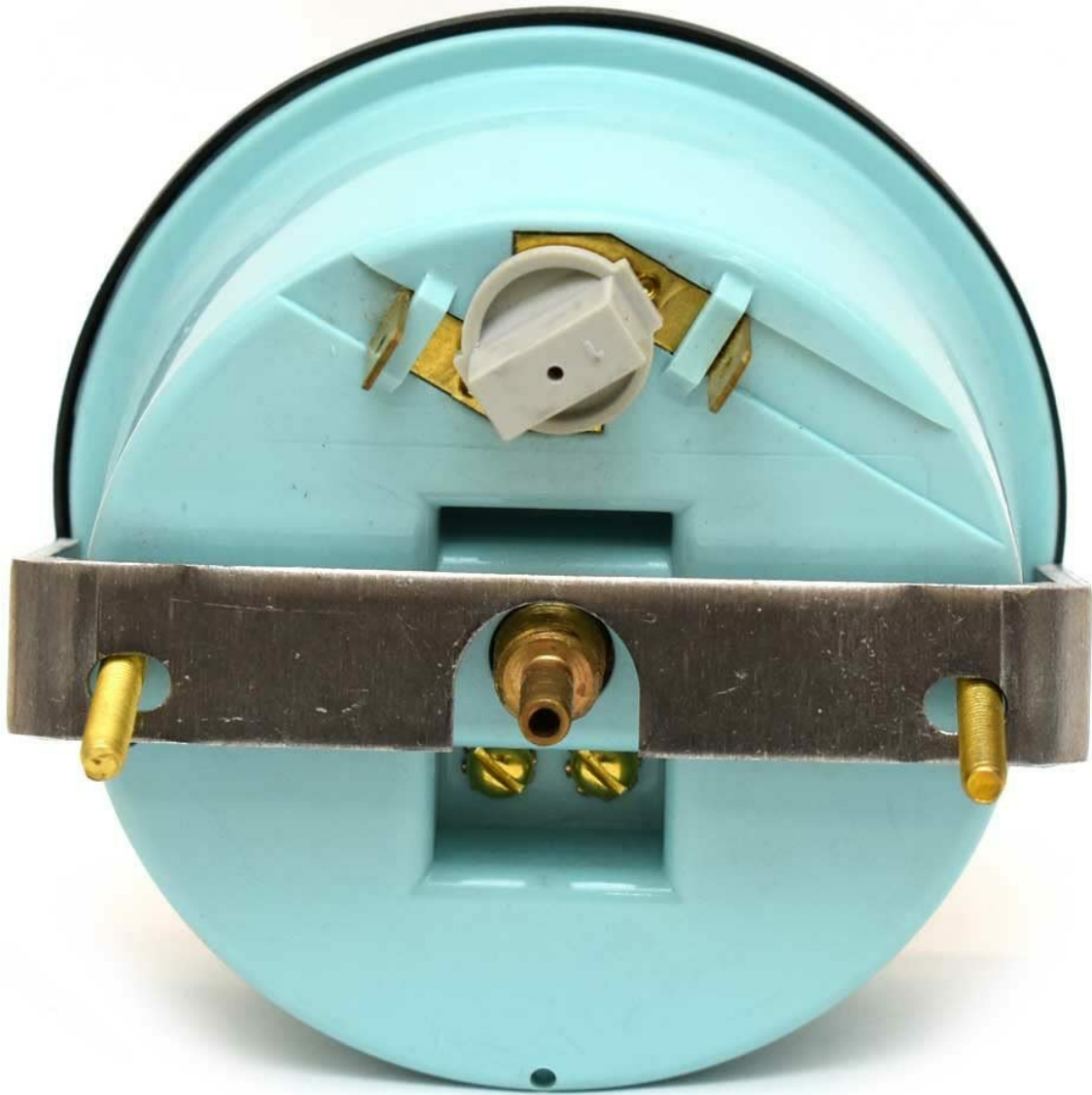


Figure 2: Rear view of the speedometer, showing the two male spade terminals for electrical connections and the pitot connection for the speed sensing tube. A mounting bracket is also visible.

## 4. OPERATING INSTRUCTIONS

### 4.1 Basic Operation

Once properly installed and connected, the speedometer will display your boat's speed in miles per hour (MPH) as water flows through the pitot tube. The gauge is halogen-illuminated for visibility in various lighting conditions.

- Turn on your boat's ignition or accessory power to activate the speedometer.
- As the boat moves through the water, the pitot tube will sense the water pressure, which is then translated into a speed reading on the gauge.
- The white needle indicates the current speed, while the blue and white graphics provide clear numerical readings.

### 4.2 Pitot System Functionality

The speedometer relies on a pitot tube system, which measures dynamic pressure created by the boat's movement through water. This pressure is transmitted via a hose to the speedometer, where it moves a diaphragm connected to the needle mechanism. Ensure your pitot tube is clear of debris and properly

positioned for accurate readings.

## 5. MAINTENANCE

### 5.1 Cleaning and Care

To maintain the appearance and functionality of your speedometer:

- Clean the gauge face and bezel with a soft, damp cloth. Avoid abrasive cleaners or solvents.
- Periodically check the pitot tube for blockages (e.g., marine growth, debris) and clear them as necessary.
- Inspect electrical connections for corrosion or looseness and address them promptly.

## 6. TROUBLESHOOTING

If you experience issues with your speedometer, refer to the table below:

Problem	Possible Cause	Solution
Speedometer not working	No power; Loose electrical connection; Blocked pitot tube	Check power supply; Secure connections; Clear pitot tube
Inaccurate speed reading	Partially blocked pitot tube; Damaged pitot tube; Incorrect pitot tube angle	Clear pitot tube; Inspect and replace if damaged; Adjust pitot tube angle
No illumination	Faulty bulb; No power to illumination circuit	Check bulb and replace if necessary; Verify illumination wiring

## 7. SPECIFICATIONS

Key technical specifications for the Teleflex Premier Pro Black 65 MPH Speedometer:

Feature	Specification
Part Manufacturer	Teleflex
Series	Premier Pro Black
Part Number	84513
Color	Black
Cutout Dimensions	3 1/4" Dia. (8.26 cm)
Overall Dimensions	3 3/4" Dia. (9.53 cm) x 3 1/4" D (8.26 cm)
Connections	Pitot, (2) Male Spades
Material	Black metal, plastic or glass
Item Weight	1 Pound (0.45 kg)

## 8. WARRANTY AND SUPPORT

## 8.1 Warranty Information





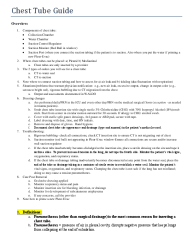
This product is sold as seen in pictures, and specific warranty information is not provided with the retail package. For details regarding manufacturer's warranty, please contact Teleflex directly or the authorized dealer from whom you purchased the product.

## 8.2 Customer Support

For technical assistance or further inquiries, please reach out to the manufacturer or your product supplier. Always provide the model number (84513) and part number when seeking support.

© 2023 Teleflex. All rights reserved.

## Related Documents - 84513

	<p><a href="#">AsthmaMD Peak Flow Meter by Teleflex - Improve Asthma Management</a></p> <p>Learn about the AsthmaMD Peak Flow Meter by Teleflex, a portable device for patients to measure peak expiratory flow, track symptoms, and manage asthma effectively. Features include accuracy, ease of use, and mobile app compatibility.</p>
	<p><a href="#">Hudson RCI Voldyne 2500 Volumetric Exerciser User Instructions and Specifications</a></p> <p>Comprehensive user instructions and technical details for the Hudson RCI Voldyne 2500 Volumetric Exerciser, a respiratory therapy device for adult and pediatric patients. Includes guidance on use, cleaning, patient progress tracking, and predictive inspiratory capacity nomograms.</p>
	<p><a href="#">Arrow VPS Rhythm DLX Device - Cart   Teleflex Vascular Access Product Catalog</a></p> <p>Product details for the Arrow VPS Rhythm DLX Device - Cart, SKU DLX-200-CART, from the Teleflex Vascular Access Product Catalog. Includes sales quantity and important usage information.</p>
	<p><a href="#">Teleflex ARROW One-Lumen CVC Catheter Set CV-04706 - Vascular Access</a></p> <p>Teleflex ARROW CV-04706 is a One-Lumen Central Venous Catheter (CVC) set, featuring a 14 GA x 6" (16 CM) catheter. This product catalog details components, highlights, considerations, and important safety information for this medical device.</p>
	<p><a href="#">Chest Tube Guide: Components, Setup, Troubleshooting, and Nursing Care</a></p> <p>A comprehensive guide to chest tube insertion, Pleur-Evac drainage systems, nursing considerations, troubleshooting, and patient education. Covers components, setup, air leak assessment, tidaling, and common issues.</p>



### [Arrow EZ-IO Intraosseous Vascular Access System: Instructions for Use & Product Information](#)

Comprehensive instructions for use, indications, contraindications, safety information, and technical specifications for the Teleflex Arrow EZ-IO Intraosseous Vascular Access System and Single-Use Power Driver. Includes guidance on insertion, removal, MRI safety, and electromagnetic compatibility.

Documents - Teleflex – 84513

no relevant documents