

Zunate Zunate56ac3ufsd2

Zunate AT3600L Dual Moving Magnet Turntable Cartridge User Manual

Model: Zunate56ac3ufsd2

1. INTRODUCTION

The Zunate AT3600L is a high-quality dual moving magnet turntable cartridge designed to deliver precise and delicate sound reproduction for your record player. This elliptical replacement cartridge is compatible with AT3600L record players and various other models, offering an enhanced listening experience for rock, pop, jazz, and other music genres. Its robust construction ensures durability and consistent performance.



Image 1.1: The Zunate AT3600L Dual Moving Magnet Turntable Cartridge, showcasing its compact design and connection pins.

2. PRODUCT FEATURES

The AT3600L cartridge incorporates several features designed to optimize audio performance and user convenience:

- **Delicate Sound:** Features a more accurate magnetic cartridge for a cleaner sound output, making music more delicate and nuanced.
- **Optimized Sound Frequency:** Engineered to better control tone, providing a warm and wide middle frequency, a full and flexible low frequency, and a bright and clear high frequency.
- **Compact and Portable Design:** Small and lightweight, ensuring it does not add significant bulk or weight to your record player.
- **Direct Replacement:** Serves as an ideal replacement or spare cartridge for many popular record players compatible with the AT3600L standard.
- **Durable Construction:** Manufactured from premium metal and ABS materials, offering resistance to wear and tear for extended service life.

AT3600L Dual Moving Magnet Turntable Cartridge



Delicate Sound



High Output



Fine Crafts



High Accuracy

Image 2.1: Visual representation of the AT3600L cartridge highlighting its key features: Delicate Sound, High Output, Fine Crafts, and High Accuracy.



Cartridge Stylus

Delicate sound

More accurate magnetic cartridge for a cleaner sound

Play rock, pop, jazz and other types of music for a more detailed sound

Ideal as a replacement or spare tape for many famous record players

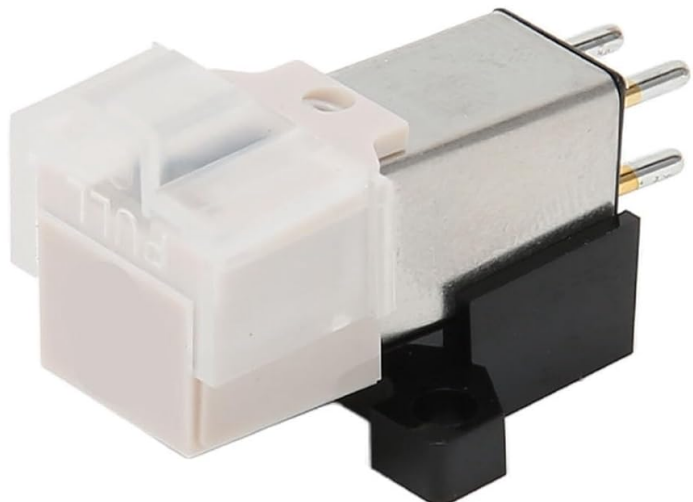


Image 2.2: The cartridge stylus, emphasizing its role in producing delicate sound and its suitability as a replacement part.

3. SETUP AND INSTALLATION

Proper installation of the AT3600L cartridge is crucial for optimal sound performance. Follow these steps carefully:

1. **Preparation:** Ensure your turntable is powered off and unplugged from the mains. Gently remove the old cartridge, if present, by disconnecting the wires and unscrewing it from the headshell.
2. **Mounting the Cartridge:** Align the new AT3600L cartridge with the mounting holes on your turntable's headshell. Use the provided screws and nuts to secure the cartridge firmly but not excessively tight.
3. **Connecting Wires:** Carefully connect the four color-coded wires from the tonearm to the corresponding pins on the back of the cartridge. Standard color coding is typically:
 - Red (R+): Right channel positive
 - Green (R-): Right channel ground
 - White (L+): Left channel positive
 - Blue (L-): Left channel ground

Ensure a secure connection without bending the pins.

4. **Alignment and Tracking Force:** Refer to your turntable's manual for specific instructions on setting the tracking force and cartridge alignment (overhang and azimuth). Proper alignment prevents record wear and improves sound quality.
5. **Testing:** Once installed, reconnect your turntable and test with a record. Listen for clear, balanced sound from both channels.



Image 3.1: The AT3600L cartridge shown with its accompanying mounting screws and nuts, essential for secure installation.



Image 3.2: A close-up view of the AT3600L cartridge mounted on a turntable's tonearm, demonstrating proper positioning.

4. OPERATING INSTRUCTIONS

Once the AT3600L cartridge is correctly installed, operating your turntable remains largely the same. Here are general guidelines:

- **Record Placement:** Carefully place your vinyl record onto the turntable platter.
- **Cueing the Tonearm:** Use the cueing lever to gently lower the tonearm onto the record's lead-in groove. Avoid dropping the tonearm manually, as this can damage the stylus or record.
- **Playback:** The cartridge will begin to track the grooves, converting the physical vibrations into electrical signals for amplification.
- **Ending Playback:** At the end of the record, or when you wish to stop, use the cueing lever to lift the tonearm and return it to its rest.



Sound frequency
Cartridge for better control of tone,
making the middle frequency warm
and wide, the low end full and flexible,
and the high end bright and dry



Image 4.1: A hand carefully lowering a turntable's tonearm and cartridge onto a spinning vinyl record, illustrating the start of playback.

5. MAINTENANCE

To ensure the longevity and optimal performance of your AT3600L cartridge and stylus, regular maintenance is recommended:

- **Stylus Cleaning:** Gently clean the stylus tip before or after each use with a soft brush designed for stylus cleaning. Brush from back to front, never side to side.
- **Record Cleaning:** Keep your records clean to prevent dust and debris from accumulating on the stylus, which can degrade sound quality and accelerate wear.
- **Stylus Inspection:** Periodically inspect the stylus for wear or damage. A worn stylus can damage your records and produce poor sound. Replace the stylus when necessary.
- **Storage:** When not in use, ensure the tonearm is secured in its rest and the stylus guard (if available) is in place to protect the stylus.

6. TROUBLESHOOTING

If you encounter issues with your AT3600L cartridge, consider the following common troubleshooting steps:

| Problem | Possible Cause | Solution |
|---|---|---|
| No sound or weak sound from one channel | Loose or incorrect wire connection; damaged stylus; unbalanced tracking force. | Check all wire connections to the cartridge and tonearm. Inspect stylus for damage. Verify tracking force and anti-skate settings. |
| Distorted or muffled sound | Dirty stylus; worn stylus; incorrect tracking force; improper alignment. | Clean the stylus. Replace worn stylus. Adjust tracking force and cartridge alignment. Ensure records are clean. |
| Skipping or jumping | Dust/debris on record or stylus; incorrect tracking force; damaged record; turntable not level. | Clean record and stylus. Adjust tracking force. Ensure turntable is on a level surface. |
| Humming or buzzing noise | Grounding issue; interference; loose connections. | Ensure turntable is properly grounded to the amplifier. Check all audio cable connections. Move turntable away from other electronic devices. |

If these steps do not resolve the issue, consult a qualified audio technician.

7. SPECIFICATIONS

Key technical specifications for the Zunate AT3600L Dual Moving Magnet Turntable Cartridge:

- **Brand Name:** Zunate
- **Model Number:** Zunate56ac3ufsd2
- **Item Weight:** 0.352 ounces (approximately 10 grams)
- **Package Dimensions:** 5.08 x 3.23 x 0.94 inches
- **Material:** Premium Metal and ABS
- **Cartridge Type:** Dual Moving Magnet
- **Stylus Type:** Elliptical
- **Compatibility:** AT3600L record players and similar models



Image 7.1: Side view of the Zunate AT3600L cartridge, highlighting its construction and form factor.

8. WARRANTY AND SUPPORT

Information regarding specific warranty terms and customer support for the Zunate AT3600L Dual Moving Magnet Turntable Cartridge is not provided in this manual. Please refer to the product packaging, the retailer's website, or contact Zunate customer service directly for details on warranty coverage and support options.

