

[Manuals.plus](#) /

› [BoostArea](#) /

› BoostArea LED Arched Floor Lamp Instruction Manual (Model B1308)

BoostArea B1308

BoostArea LED Arched Floor Lamp

Model: B1308

1. INTRODUCTION

Thank you for choosing the BoostArea LED Arched Floor Lamp. This manual provides essential information for the safe and efficient assembly, operation, and maintenance of your new floor lamp. Please read these instructions thoroughly before use and retain them for future reference.



Figure 1: BoostArea LED Arched Floor Lamp (Green Shade)

2. PRODUCT FEATURES

- **E26 Standard Base Socket:** Compatible with E26 bulbs (bulb not included), allowing for personalized lighting styles.
- **Natural Linen Lampshade:** Features a double-layered drum shade made of 100% natural linen outer with premium PVC lining. The inner PVC is waterproof and oil-resistant, while the outer linen is easy to clean. Designed to soften light for eye comfort.
- **Sturdy Construction:** 63-inch tall lamp with a 10-inch sturdy base, passing UL 8° Stability tests for enhanced safety.
- **Convenient Footswitch:** Easy to operate on/off control via a footswitch, ideal for hands-free use.
- **Smart Device Compatibility:** Can be connected to smart devices (not included) for remote control and home automation integration.

3. PACKAGE CONTENTS

Please check the package for the following components:

- Floor Lamp Pole Sections
- Lamp Base
- Arc Arm
- Linen Lampshade (rolled)
- E26 Lamp Holder Assembly
- Footswitch Power Cord
- Assembly Instructions

4. SETUP AND ASSEMBLY

Assembly of the BoostArea LED Arched Floor Lamp typically takes approximately 5 minutes and requires no additional tools. Follow these steps:

1. **Unpack Components:** Carefully remove all parts from the packaging.
2. **Assemble Lamp Pole:** Screw the lamp pole sections together clockwise until secure.
3. **Attach Base:** Securely attach the assembled lamp pole to the lamp base by screwing it clockwise.
4. **Install Arc Arm:** Screw the arc arm onto the top of the lamp pole.
5. **Assemble Lampshade:** The linen lampshade comes rolled. Unroll it and attach it to the lampshade rings using the provided clips or fasteners. Ensure the shade is taut and evenly shaped.
6. **Attach Lampshade to Lamp Holder:** Place the assembled lampshade onto the E26 lamp holder assembly and secure it with the retaining ring.
7. **Insert Bulb:** Screw an E26 base bulb (not included) into the lamp holder.
8. **Connect Power:** Plug the footswitch power cord into a standard wall outlet.

Easy Assembly

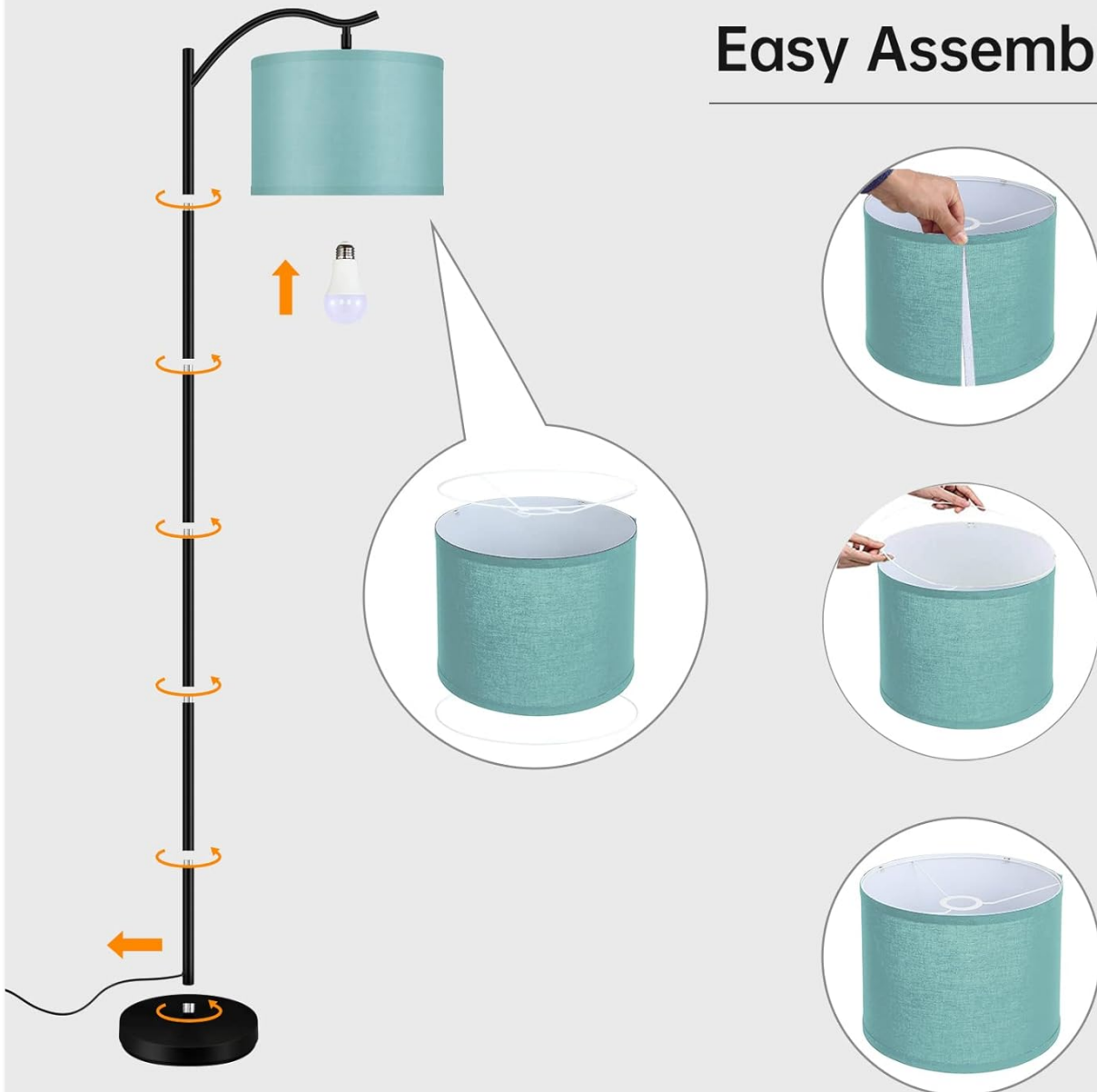


Figure 2: Easy Assembly Steps

5. OPERATING INSTRUCTIONS

Your BoostArea LED Arched Floor Lamp is designed for simple operation:

- **Power On/Off:** Use the integrated footswitch located on the power cord to turn the lamp on or off. Press once to turn on, press again to turn off.
- **Light Modes (if applicable to bulb):** If using a dimmable bulb, the lamp may support multiple brightness levels (e.g., 30%, 70%, 100%). Consult your bulb's instructions for specific dimming functionality.
- **Smart Device Control:** To use with a smart device (e.g., smart plug, smart home assistant), ensure the lamp is plugged into the smart device and follow the smart device's pairing and control instructions. The lamp's footswitch should be in the 'on' position for smart control.



Arc Floor Lamp with Linen Lampshade

A Plus for Your Home Decor

Figure 3: Dimmable Functionality (with compatible bulb)

6. MAINTENANCE

To ensure the longevity and optimal performance of your floor lamp:

- **Cleaning:** Disconnect the power before cleaning. Wipe the metal parts with a soft, dry cloth. The linen lampshade can be cleaned with a damp cloth. Avoid abrasive cleaners.
- **Bulb Replacement:** Ensure the lamp is unplugged and the bulb has cooled before attempting to replace it. Use only E26 base bulbs.
- **Stability Check:** Periodically check that all connections are secure and the base remains stable.

7. TROUBLESHOOTING

Problem	Possible Cause	Solution
Lamp does not turn on.	Power cord not plugged in; bulb loose or faulty; footswitch off.	Ensure power cord is securely plugged in. Check if the bulb is screwed in tightly or needs replacement. Press the footswitch to turn on.
Light flickers.	Loose bulb connection; incompatible bulb; power fluctuations.	Tighten the bulb. Try a different E26 bulb. Check power supply.
Lampshade appears creased.	Improper assembly of rolled shade.	Disassemble and re-assemble the lampshade, ensuring it is stretched taut and evenly attached to the rings.

8. SPECIFICATIONS

Feature	Detail
Model Number	B1308
Brand Name	BoostArea
Lamp Type	Floor Lamp
Product Dimensions	10"D x 10"W x 62.5"H
Item Weight	4.03 Kilograms
Material Type	Metal, Linen
Shade Material	Linen
Bulb Base	E26 (Bulb Not Included)
Switch Type	Foot Switch
Power Source	Corded Electric
Additional Features	Dimmable (with compatible bulb)
Indoor/Outdoor Usage	Indoor

9. WARRANTY AND SUPPORT

For warranty information or technical support, please refer to the contact details provided with your purchase or visit the official BoostArea website. Keep your purchase receipt as proof of purchase for any warranty claims.

