

## SOMIC GS510Pro

# SOMIC GS510Pro Black Cat Ear Gaming Headset

## USER MANUAL

### 1. Product Overview

The SOMIC GS510Pro Black Cat Ear Gaming Headset is designed to provide an immersive audio experience for gaming and multimedia. It features versatile connectivity options, a high-quality microphone, and customizable RGB lighting, all integrated into a unique and comfortable design.

#### Key Features:

- **Triple Connectivity Modes:** Supports 3.5mm wired, 2.4GHz wireless (USB transmitter), and Bluetooth 5.0 for broad compatibility.
- **Retractable Microphone:** A 120° rotatable microphone with noise reduction for clear communication.
- **Immersive Audio:** Equipped with 50mm dynamic drivers and 7.1 surround sound capability.
- **Customizable RGB Lighting:** Features dynamic RGB lighting effects on the earcups and cat ears.
- **Long Battery Life:** Up to 8 hours of continuous use on a single charge.
- **Interchangeable Ear Covers:** Personalize your headset with magnetic surface covers.



Figure 1: SOMIC GS510Pro Black Cat Ear Gaming Headset with USB receiver and 3.5mm cable.

## 2. Setup

### 2.1 Package Contents

Before beginning, please ensure all items are present in the package:

- SOMIC GS510Pro Gaming Headset
- USB Wireless Receiver
- 3.5mm Male-to-Male Audio Cable (1.2m)
- Type-C Charging Cable (1m)
- 4 Magnetic Surface Covers (2 pre-installed, 2 alternate designs)

### 2.2 Charging the Headset

For optimal performance, fully charge the headset before first use. Connect the Type-C charging cable to the headset's charging port and the other end to a USB power source (e.g., computer USB port, USB wall adapter). The charging indicator light will show the charging status. A full charge takes approximately 2 hours and provides up to 8 hours of battery life.

## 2.3 Connecting the Headset

The GS510Pro offers three connection methods:

### 2.3.1 2.4GHz Wireless Connection (for PC, Laptop, PS4, PS5)

1. Plug the USB Wireless Receiver into an available USB port on your device.
2. Turn on the headset by pressing and holding the Power button until the indicator light illuminates.
3. The headset will automatically pair with the receiver. A stable indicator light on both the headset and receiver confirms a successful connection.



Figure 2: Low-latency 2.4GHz wireless connection for gaming devices.

### 2.3.2 Bluetooth 5.0 Connection (for Mobile Phone, iPad, Tablet)

1. Ensure the headset is powered on.
2. Press the Mode button on the headset to switch to Bluetooth mode. The indicator light will flash, indicating pairing mode.
3. On your mobile device, go to Bluetooth settings and select "SOMIC GS510Pro" from the list of available devices.
4. Once connected, the headset's indicator light will become stable.



Figure 3: Wide compatibility of the SOMIC GS510Pro headset across different platforms.

### 2.3.3 3.5mm Wired Connection (for devices with 3.5mm audio jack)

1. Connect one end of the 3.5mm male-to-male audio cable to the headset's 3.5mm audio jack.
2. Connect the other end to the 3.5mm audio jack on your device.
3. Note: RGB lighting is not active when using the 3.5mm wired connection.

## 3. Operating the Headset

### 3.1 Headset Controls



The headset features intuitive controls located on the left earcup:

- **Power Button:** Press and hold to power on/off. Short press to check battery status (if applicable).
- **Mode Button:** Cycles through sound effect modes (Game, Audio, Live) and switches between wireless connection types (2.4GHz/Bluetooth).
- **Microphone Mute Button:** Toggles microphone on/off.
- **Volume Wheel:** Adjusts the audio output volume.



Figure 4: Overview of headset controls and included accessories.

### 3.2 Microphone Usage

The headset features a retractable and rotatable microphone. Pull the microphone out from the earcup when needed. It can be rotated up to 120 degrees for optimal positioning. When not in use, the microphone can be stowed away to prevent interference. The precision pickup mic is designed to reduce background noise for clear communication.

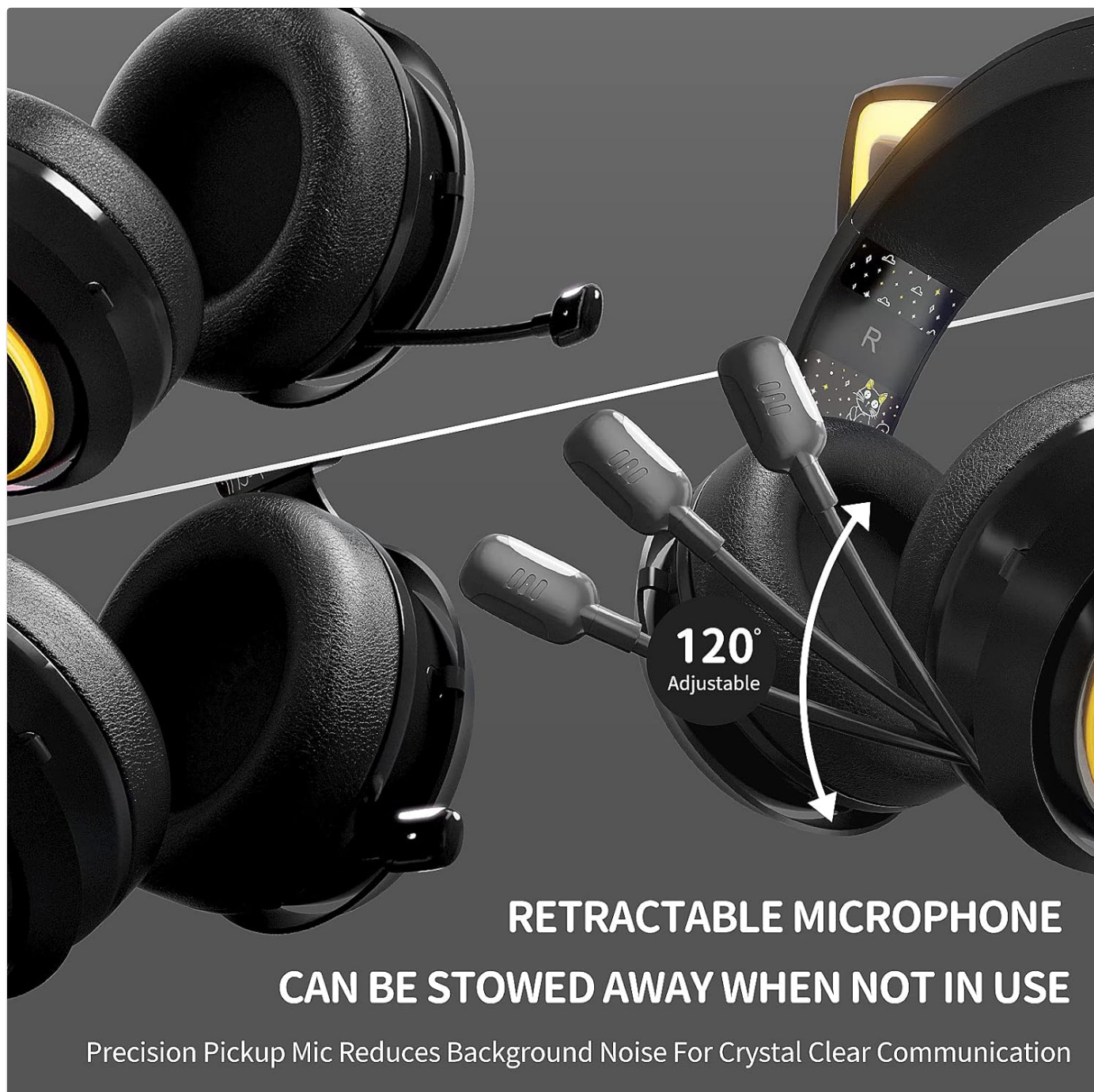


Figure 5: Retractable microphone can be stowed away when not in use.

### 3.3 Sound Effect Modes

The headset offers three distinct sound effect modes, which can be cycled using the Mode button. A voice prompt will confirm the selected mode:

- **Game Mode:** Optimized for gaming, enhancing spatial audio cues and effects.
- **Audio Mode:** Balanced sound profile suitable for music listening.
- **Live Mode:** Designed for clear voice communication and live streaming.



# THREE SOUND EFFECT MODES

Scene change, sound isn't compromised.



When switching sound effects, the headset is accompanied by voice prompt.

Figure 6: Three distinct sound effect modes for various scenarios.

## 3.4 RGB Lighting Control

The headset features dynamic RGB lighting on the earcups and cat ears. The lighting can be controlled via a convenient fingerprint-touch area on the earcup, allowing you to switch between multiple color options and lighting effects.



Figure 7: Gaming RGB Lighting with convenient fingerprint-touch control.

### 3.5 Changing Magnetic Surface Covers

The headset comes with interchangeable magnetic surface covers on the earcups, allowing for personalization. Gently remove the existing cover and align the new cover with the earcup until the magnets secure it in place.

## 4. Maintenance

Proper maintenance ensures the longevity and performance of your SOMIC GS510Pro headset.

- **Cleaning:** Use a soft, dry, lint-free cloth to clean the headset. Avoid using abrasive cleaners, solvents, or strong chemicals.
- **Storage:** Store the headset in a cool, dry place away from direct sunlight and extreme temperatures. When not in use for extended periods, it is recommended to store it in its original packaging or a protective case.
- **Battery Care:** To preserve battery life, avoid fully discharging the headset frequently. Charge the headset regularly, even if not in active use, to maintain battery health.



- **Cable Management:** Avoid sharp bends or kinks in the cables to prevent internal damage.

## 5. Troubleshooting

If you encounter issues with your SOMIC GS510Pro headset, refer to the following common problems and solutions:

Problem	Possible Cause	Solution
No sound from headset	Headset not powered on; Low battery; Incorrect connection mode; Volume too low; Device audio settings.	Ensure headset is powered on and charged. Check connection mode (2.4GHz, Bluetooth, or wired). Increase headset and device volume. Verify headset is selected as the audio output device in your system settings.
Microphone not working	Microphone muted; Microphone not fully extended; Incorrect input device selected; Software issues.	Ensure microphone is unmuted (check mute button). Fully extend the retractable microphone. Select the headset microphone as the input device in your device's sound settings. Restart the application or device.
Headset disconnects frequently	Low battery; Out of range; Interference; Pairing issue.	Charge the headset fully. Ensure you are within the operating range (up to 33 ft for wireless). Move away from other wireless devices that may cause interference. Re-pair the headset with your device.
RGB lighting not working/changing	Headset in 3.5mm wired mode; Lighting control issue.	RGB lighting is only active in wireless modes (2.4GHz or Bluetooth). Ensure you are not in wired mode. Try touching the fingerprint-touch area on the earcup to cycle through lighting effects.
Headset won't turn on	Battery completely drained; Faulty charging cable/port.	Connect the headset to a power source and allow it to charge for at least 30 minutes before attempting to power it on again. Try a different charging cable or USB port. If the issue persists, contact customer support.

## 6. Specifications

Model Name	GS510 PRO
Model Number	SC-GS510Pro-Black-CA
Connectivity Technology	Wireless (2.4G, Bluetooth), Wired (3.5mm Jack)
Driver Unit	50mm Dynamic Driver
Frequency Range	10 Hz - 20,000 Hz
Battery Life	Up to 8 Hours
Charging Time	Approximately 2 Hours
Microphone Format	Retractable, Detachable
Compatible Devices	Cellphones, PS5, PS4, Laptops, PCs, Tablets
Material	Plastic

Product Dimensions	22.5 x 11 x 26 cm; 680 g
--------------------	--------------------------

## 7. Warranty and Support


For warranty information and customer support, please refer to the official SOMIC website or contact their customer service directly. Keep your purchase receipt as proof of purchase for any warranty claims.

**SOMIC Official Website:** [www.somic.cn](http://www.somic.cn)

For further assistance, please reach out to SOMIC customer support through the contact methods provided on their website.


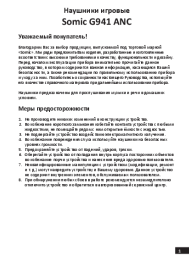
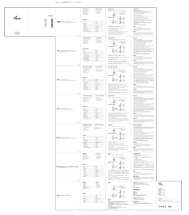
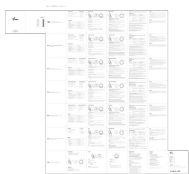
© 2023 SOMIC. All rights reserved.

### Related Documents - GS510Pro

	<p><a href="#">SOMiC GS510 Cat Headset User Manual</a></p> <p>A comprehensive guide for the SOMiC GS510 Cat Headset, detailing its features, setup, compatibility with gaming consoles and PC, and usage instructions for the retractable noise-cancelling microphone.</p>
---	--





	<p><a href="#">SOMIC G760 Gaming Headset User Manual and Guide</a></p> <p>Official user manual for the SOMIC G760 Gaming Headset. Learn about product features, package contents, detailed specifications, headset controls, quick start guide for pairing, troubleshooting common issues, and warranty information.</p>
	<p><a href="#">Somic G941 ANC Gaming Headphones - User Manual and Specifications</a></p> <p>Detailed user manual and technical specifications for the Somic G941 ANC gaming headphones, covering features, precautions, setup, and warranty information.</p>
	<p><a href="#">SOMIC G951S Gaming Headset User Manual - Features, Specs, Troubleshooting</a></p> <p>Comprehensive user manual for the SOMIC G951S Gaming Headset. Learn about product features, package contents, specifications, quick start guide, and troubleshooting tips for PC, PS4, PS5, Xbox One, and Nintendo Switch.</p>
	<p><a href="#">SOMIC GS510 Wireless Gaming Headset User Manual</a></p> <p>User manual for the SOMIC GS510 Wireless Gaming Headset, covering product features, package contents, controls, quick start guide, troubleshooting, specifications, and warranty information in multiple languages.</p>

Documents - SOMIC – GS510Pro

GS510Pro Gaming Headset User Manual																											
Product Features	<ul style="list-style-type: none"><li>• 3 Modes Connection-Bluetooth/2.4Ghz Wireless/3.5mm Jack Wired Connection</li><li>• 3 Professional Audio Modes-Gaming/Live/Music Mode</li><li>• Retractable 120° Rotting Microphone</li><li>• Magnetic Speaker Tags Design</li><li>• Virtual 7.1 Surround Sound</li><li>• 8 RGB Lighting Effects + One Multi-color Cycling Mode</li></ul>																										
Package Contents	<ul style="list-style-type: none"><li>• 1 x Cat Ear Headphones</li><li>• 2 Pairs Speaker Tags</li><li>• 1 x USB Transceiver</li><li>• 1 x 3.5mm Splitter Cable</li><li>• 1 x Type-C Charging Cable</li><li>• 1 x User Manual</li></ul>																										
Specifications	<table><tr><td>Model</td><td>GS510 Pro</td></tr><tr><td>Bluetooth version</td><td>5.0</td></tr><tr><td>Driver Diameter</td><td>40mm</td></tr><tr><td>Impedance(Ω)</td><td>32ohms</td></tr><tr><td>Sensitivity(Ω)</td><td>100dB±1dB</td></tr><tr><td>Impedance(Ω)</td><td>32±20%</td></tr><tr><td>Impedance(Headphones)</td><td>32Ω</td></tr><tr><td>Sensitivity(Headphones)</td><td>100±1dB</td></tr><tr><td>Frequency Response(Headphones)</td><td>20Hz ~ 20000Hz</td></tr><tr><td>Headset Battery Capacity</td><td>1500mAh</td></tr><tr><td>Battery Working Time</td><td>80Hours</td></tr><tr><td>Battery Charging Time</td><td>3Hours</td></tr><tr><td>Communication Distance</td><td>10 Meters/33 Feet</td></tr></table>	Model	GS510 Pro	Bluetooth version	5.0	Driver Diameter	40mm	Impedance(Ω)	32ohms	Sensitivity(Ω)	100dB±1dB	Impedance(Ω)	32±20%	Impedance(Headphones)	32Ω	Sensitivity(Headphones)	100±1dB	Frequency Response(Headphones)	20Hz ~ 20000Hz	Headset Battery Capacity	1500mAh	Battery Working Time	80Hours	Battery Charging Time	3Hours	Communication Distance	10 Meters/33 Feet
Model	GS510 Pro																										
Bluetooth version	5.0																										
Driver Diameter	40mm																										
Impedance(Ω)	32ohms																										
Sensitivity(Ω)	100dB±1dB																										
Impedance(Ω)	32±20%																										
Impedance(Headphones)	32Ω																										
Sensitivity(Headphones)	100±1dB																										
Frequency Response(Headphones)	20Hz ~ 20000Hz																										
Headset Battery Capacity	1500mAh																										
Battery Working Time	80Hours																										
Battery Charging Time	3Hours																										
Communication Distance	10 Meters/33 Feet																										

[pdf] User Manual Specifications

zhangxiaoyan User Manual Amazon SOMIC Cat Ear Headphones 2 4G Bluetooth Wireless Gaming Headset for PS5 PS4 PC with RGB Lights and Retractable Mic 10Hrs Playtime 7 1 Surround Sound Laptop Smartphone GS510 Pro Pink Video Games 61OTktF06zL m media amazon images I ||| GS510Pro Gaming Headset User Manual Product Features 3 Modes Connection-Bluetooth/2.4Ghz Wireless/3.5mm Jack Wired Connection 3 Professional Audio Modes -Gaming/Live/Music Mode Retractable 120 Rotting Microphone Magnetic Speaker Tags Design Virtual 7.1 Surround Sound 8 RGB Lighting Effects... lang:en score:33 filesize: 99.71 K page\_count: 4 document date: 2022-08-22

