



Manuals.plus /

› HATHEPHS /

› HATHEPHS RF Interconnected Smoke and Carbon Monoxide Detector User Manual

HATHEPHS CS11R

HATHEPHS RF Interconnected Smoke and Carbon Monoxide Detector User Manual

Model: CS11R

INTRODUCTION

This user manual provides essential information for the proper installation, operation, and maintenance of your HATHEPHS RF Interconnected Smoke and Carbon Monoxide Detector. This device is designed to provide early warning of smoke and carbon monoxide presence, enhancing the safety of your home environment. Please read this manual thoroughly before installation and keep it for future reference.

KEY FEATURES

- **Wireless Interconnection:** This detector can wirelessly connect with up to 30 other compatible HATHEPHS alarms, creating a synchronized safety network. If one alarm is triggered, all interconnected alarms will sound, providing comprehensive coverage throughout your property.
- **Built-In 10-Year Battery:** Equipped with a sealed 10-year lithium battery, this detector offers continuous, maintenance-free power for its entire lifespan, eliminating the need for frequent battery replacements.
- **Large Test/Silence Button:** The entire top cover of the device functions as a large test/silence button, allowing for easy testing or temporary silencing of nuisance alarms with a simple press, even with a broom handle.
- **2-in-1 Protection:** Utilizing dual sensors, this device accurately detects both smoke and carbon monoxide, alerting you to danger with an audible alarm exceeding 85 dB.
- **Ultra-Thin & Modern Design:** With a thickness of just 1.1 inches and a sleek circular design, this detector blends seamlessly into any modern home decor, offering unobtrusive safety.
- **Quick Installation:** Offers flexible installation options including adhesive tape for convenience or screws and anchor plugs for a more secure mounting.



Figure 1: The 2-in-1 protection feature of the detector, sensing both smoke and carbon monoxide.

10-year Battery Life

Uninterrupted 24/7 protection



Figure 2: Illustrates the 10-year battery life, providing long-term, uninterrupted protection.

When One Alarm is Triggered, They All Will!

Interconnects up to 30 wireless alarms



Figure 3: Depicts the wireless interconnection feature, where all alarms trigger if one detects danger.

ULTRA-THIN DESIGN



Figure 4: The ultra-thin design of the detector, highlighting its compact dimensions.

SETUP AND INSTALLATION

The HATHEPHS detector offers two primary installation methods: adhesive mounting or screw mounting. Choose the method best suited for your surface and needs.

Installation Steps:

1. **Choose Location:** Select a suitable location on a wall or ceiling, away from vents, windows, or areas with high humidity. For optimal smoke detection, mount on the ceiling in the center of a room or hallway. For CO detection, consider mounting at breathing height in bedrooms and living areas.
2. **Prepare Surface:** Ensure the mounting surface is clean, dry, and smooth.
3. **Mounting Bracket:** The detector comes with a mounting bracket.
 - **Adhesive Mounting:** Peel the protective film from the adhesive tape on the back of the mounting bracket. Press the bracket firmly onto the chosen surface for at least 30 seconds.

- **Screw Mounting:** Use the mounting bracket as a template to mark the drill holes. Drill two holes, insert the provided anchor plugs (if needed for drywall), and secure the bracket with the provided screws.
- **Attach Detector:** Align the detector with the mounting bracket and twist clockwise until it clicks securely into place.
- **Activate:** The detector will automatically activate once properly attached to the mounting bracket.

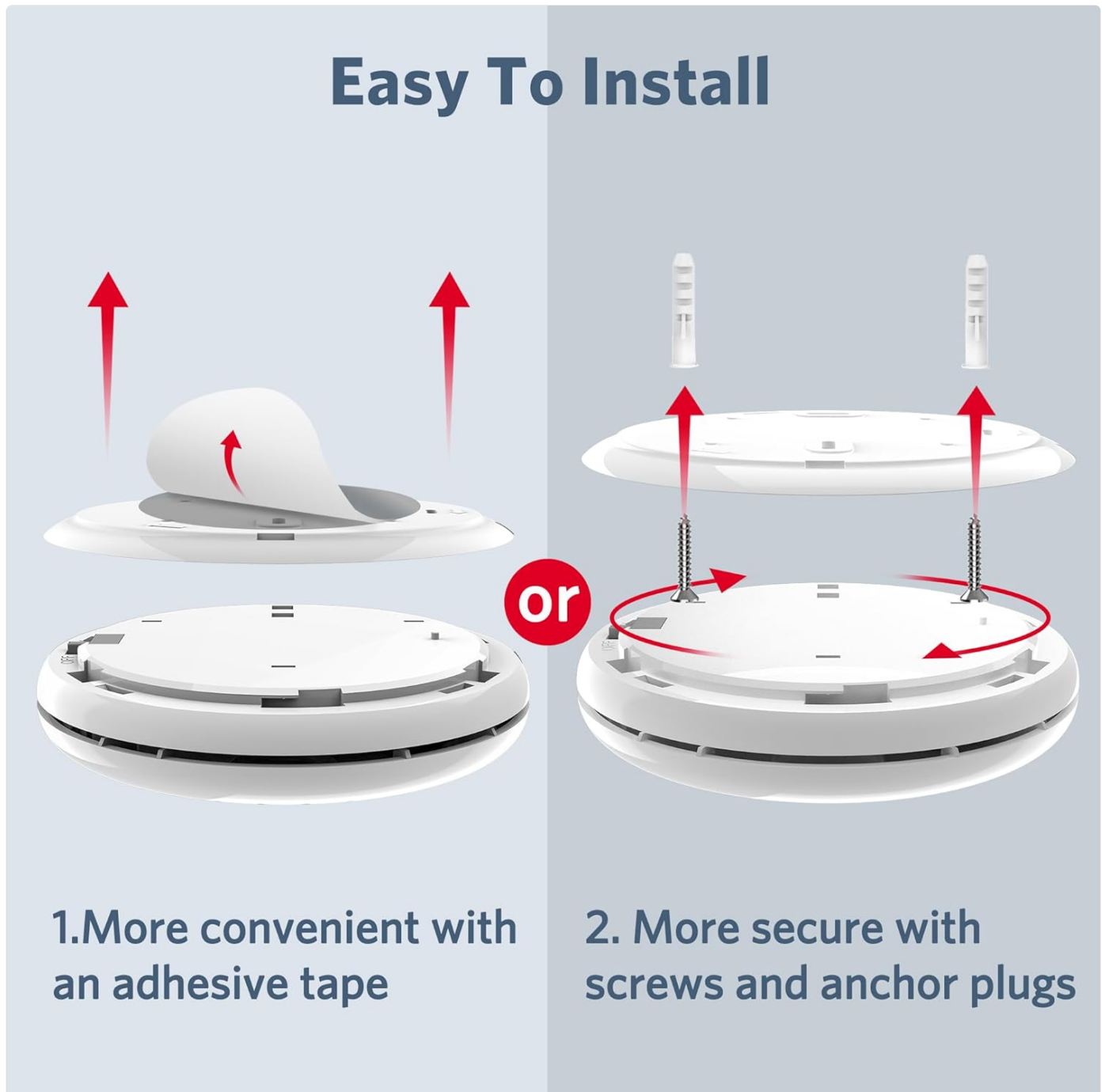


Figure 5: Visual guide for the two easy installation methods: adhesive or screw mounting.

OPERATING INSTRUCTIONS

Indicator Lights:

- **Green Light:** Flashes approximately every 60 seconds, indicating normal operation and sufficient battery power.
- **Red Light:** Flashes rapidly during an alarm event (smoke or CO detection).
- **Orange Light:** Indicates a fault or low battery warning.

Testing the Alarm:

It is recommended to test your detector monthly to ensure proper functionality.

1. Press and hold the large test/silence button (the entire top cover) for a few seconds.
2. The alarm will sound a loud siren, and the red light will flash, confirming the alarm is working.
3. Release the button to stop the test.



Figure 6: Demonstrates the ease of testing the alarm using the large test/silence button.

MAINTENANCE

- **Battery:** The detector features a sealed 10-year lithium battery that does not require replacement. If the orange light indicates a low battery, the unit is nearing the end of its operational life and should be replaced.
- **Cleaning:** Dust and debris can affect the detector's performance. Gently vacuum the detector's vents and exterior surface monthly using a soft brush attachment. Do not use cleaning solvents or sprays.

- **Regular Testing:** Perform a monthly test as described in the 'Operating Instructions' section to ensure the alarm is functioning correctly.

TROUBLESHOOTING

Problem	Possible Cause	Solution
Alarm sounds intermittently or 'chirps'.	Low battery warning or fault condition.	The 10-year battery is sealed. If chirping persists, the unit may be at the end of its life. Replace the detector.
Alarm sounds continuously.	Smoke or Carbon Monoxide detected.	Evacuate the premises immediately. Call emergency services. Do not re-enter until the area is deemed safe by professionals.
Nuisance alarms (false alarms).	Steam from shower, cooking fumes, dust, or insects.	Press the large test/silence button to temporarily silence the alarm. Ventilate the area. Clean the detector as per maintenance instructions. Relocate if nuisance alarms are frequent due to environmental factors.
Detector does not respond to test button.	Unit not properly activated or end-of-life.	Ensure the detector is securely twisted onto its mounting bracket. If it still doesn't respond, the unit may be faulty or at the end of its 10-year life and requires replacement.

SPECIFICATIONS

Attribute	Detail
Brand	HATHEPHS
Model Number	CS11R
Style	RF Interconnected
Power Source	Battery Powered (10-Year Lithium Metal, included)
Color	White
Item Weight	4.8 ounces
Alarm Type	Audible (>85 dB) and Visual (LED)
Sensor Type	Photoelectric
Material	Heat-Resistant PC Plastic Material
Product Dimensions	4.7 x 4.7 x 1.1 inches
Voltage	3 Volts (DC)
Installation Method	Screw-In or Self-Adhesive
Coverage Area	215-430 sq. ft.
Included Components	1 x Wireless Interlinked Combination Smoke and CO Alarm, 1 x Mounting Bracket, 1 x Adhesive Tape, 2 x Screws/Anchors, 1 x User Manual

WARRANTY AND SUPPORT

Your HATHEPHS RF Interconnected Smoke and Carbon Monoxide Detector is backed by a **90-day money-back guarantee** and a **5-year warranty** from the date of purchase. This warranty covers defects in materials and workmanship under normal use.

For warranty claims, technical support, or any questions regarding your product, please contact HATHEPHS customer service through the retailer's platform or visit the official HATHEPHS store online. Please have your purchase details and model number (CS11R) ready when contacting support.