

erjigo KZ D-Fi In-Ear Monitor Earbuds Instruction Manual

1. INTRODUCTION

The erjigo KZ D-Fi In-Ear Monitor (IEM) Earbuds are designed to deliver a high-fidelity audio experience. Featuring a dual-magnet and dual-cavity dynamic driver, these earbuds offer a wide frequency response and precise sound reproduction. This manual provides essential information for setting up, operating, and maintaining your KZ D-Fi IEMs.

Product Overview

The KZ D-Fi IEMs are equipped with a custom dual-magnet and dual-cavity dynamic driver, enhancing magnetic field strength for improved energy efficiency and transient performance. They are available in both standard and tunable versions to suit different audio preferences.



Figure 1: KZ D-Fi In-Ear Monitor Earbuds.

Key Features

- **Dual-Magnet & Dual-Cavity Dynamic Driver:** Provides extraordinary acoustic performance with enhanced magnetic field and stronger transient response.
- **Two Versions Available:** Choose between the standard tune for accurate three-frequency response or the tunable version with a special lever for manual sound adjustment.
- **Wide Frequency Response:** A range of 7Hz-45000Hz ensures deep low-frequency dive and excellent high-frequency performance.
- **Detachable High Purity Silver Plated Wire:** Reduces signal loss and sound attenuation, ensuring high-fidelity audio. The detachable design allows for cable replacement, extending product lifespan.
- **Metal Shell & Ergonomic Design:** All-metal shell crafted through multiple processes with manual polishing for a glossy effect. Ergonomic ear-wrap design ensures comfortable and stable wear, complemented by sound-insulating memory foam ear tips.



Figure 2: Key features of the KZ D-Fi IEMs.

Official Product Video

Your browser does not support the video tag.

Video 1: Official overview of KZ D-Fi Audiophile In-Ear Monitors, detailing their design and acoustic capabilities.

2. PACKAGE CONTENTS

Please check the package to ensure all items are present:

- Earbuds (Left and Right)
- Silver-plated cable
- Silicone ear tips (various sizes)
- Tuning lever (only for tunable version)
- Instruction book
- Eco-friendly packaging

product list

1. Ear buds
2. Silicone ear tips
3. silver-plated cable
4. Tuning lever (only available for tunable version)
5. Instruction book
6. Eco-friendly packaging

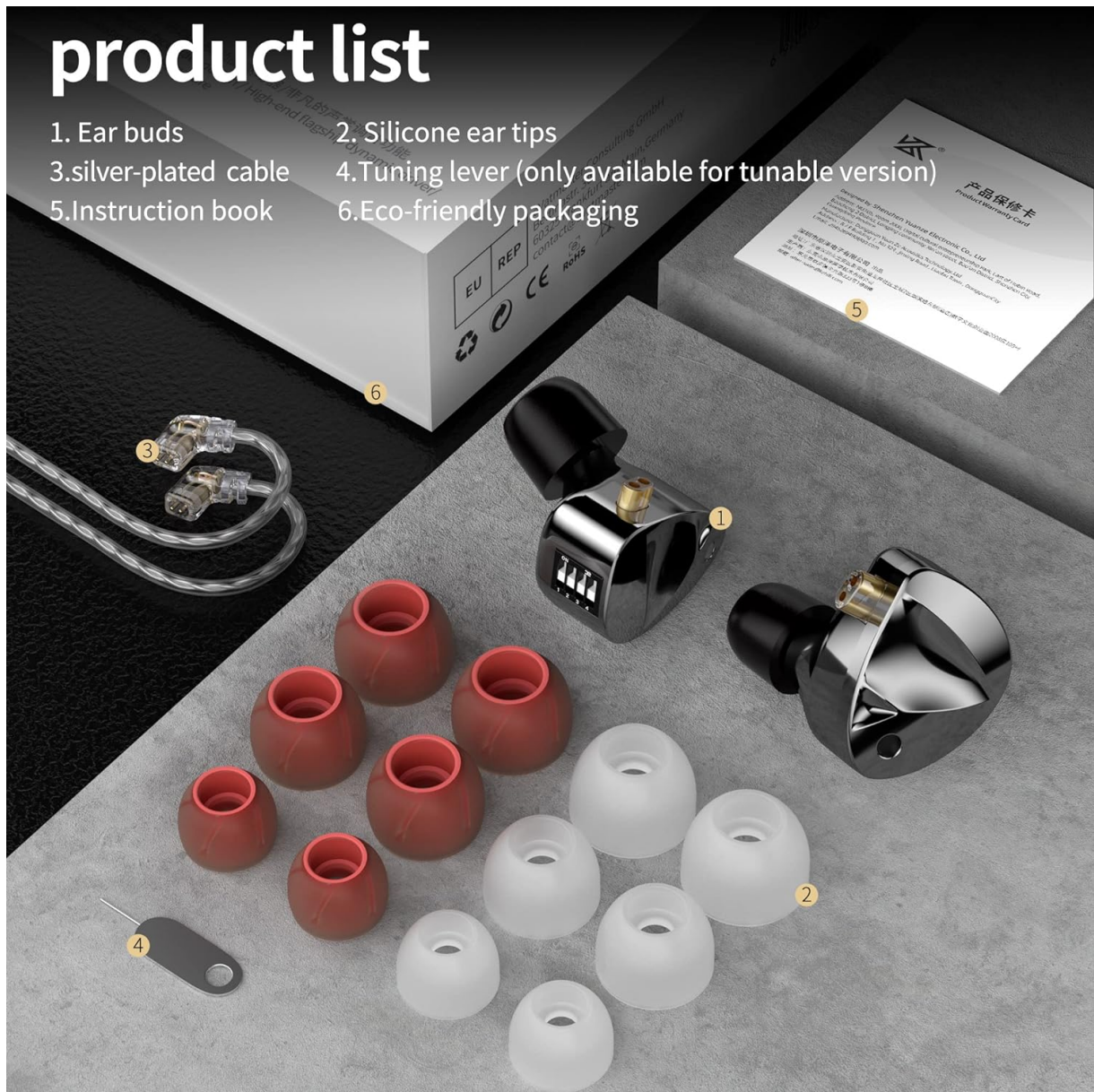


Figure 3: Contents included in the KZ D-Fi package.

3. SETUP

Connecting the Cable

1. Identify the left and right earbuds and the corresponding cable connectors. The cable features 0.75mm pin type connectors.
2. Align the pins on the cable with the sockets on the earbuds. Gently push the cable connectors into the earbud sockets until they are securely seated. Do not force the connection.
3. Ensure both sides are firmly connected to prevent signal interruption.

Wearing the Earbuds

The KZ D-Fi earbuds feature an ergonomic ear-wrap design for comfort and stability.

1. Select the appropriate size of silicone ear tips for a comfortable and secure fit. A good seal is crucial for optimal sound isolation and bass response.
2. Insert the earbud into your ear canal.
3. Gently wrap the cable over and behind your ear. This design helps to keep the earbuds in place during movement and reduces microphonics.

4. Adjust the earbud position until it feels comfortable and provides effective sound isolation.

Focus on ergonomic in-ear design for cavity & nozzle Comfortable to wear it

The properly length nozzle, with the ergonomic cavity design, which ensure the earphone comfortable to wear and not easy to fall off. Meanwhile, D-Fi adopts the sound-isolating memory foam eartips to effectively reduce external noise interference.



Figure 4: Proper wearing of KZ D-Fi earbuds with ergonomic ear-wrap design.

4. OPERATION

Audio Tuning (Tunable Version Only)

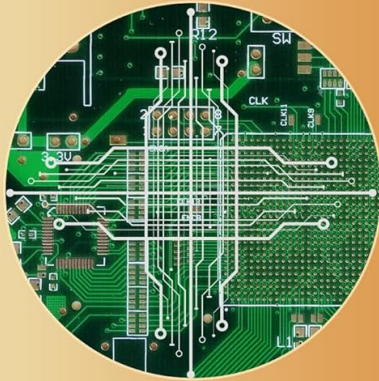
For the tunable version of the KZ D-Fi, a special tuning lever is provided to adjust the sound signature. This allows for personalized sound adjustments based on your preferences.

- Locate the tuning switches on the earbuds.
- Use the provided tuning lever to adjust the switches according to your desired sound profile. Refer to the specific tuning guide included with your tunable version for detailed instructions on switch combinations and their effects on the frequency response.
- Experiment with different switch settings to find the sound that best suits your listening style.

Pioneering and innovative precise tuning method

The traditional tuning method is achieved by replacing dampers with different mesh numbers and sizes, but this method cannot accurately control a certain frequency band. KZ adopts innovative circuit board adjustment methods, which can accurately control each frequency band according to our target curve.

KZ Patent Electronic tuning



Pioneering precision
tuning methods



Traditional tuning methods



Unable to accurately adjust
for a certain frequency band



Figure 5: KZ Patent Electronic Tuning method for precise sound adjustment.

Suitable for a variety of music styles, easy to drive

The king of dynamic IEM, classic U-shaped tuning, The bass is strong properly & clear, plus the natural & smooth sub bass, treble well-defined, which makes D-Fi becomes one of the dynamic king in the market.

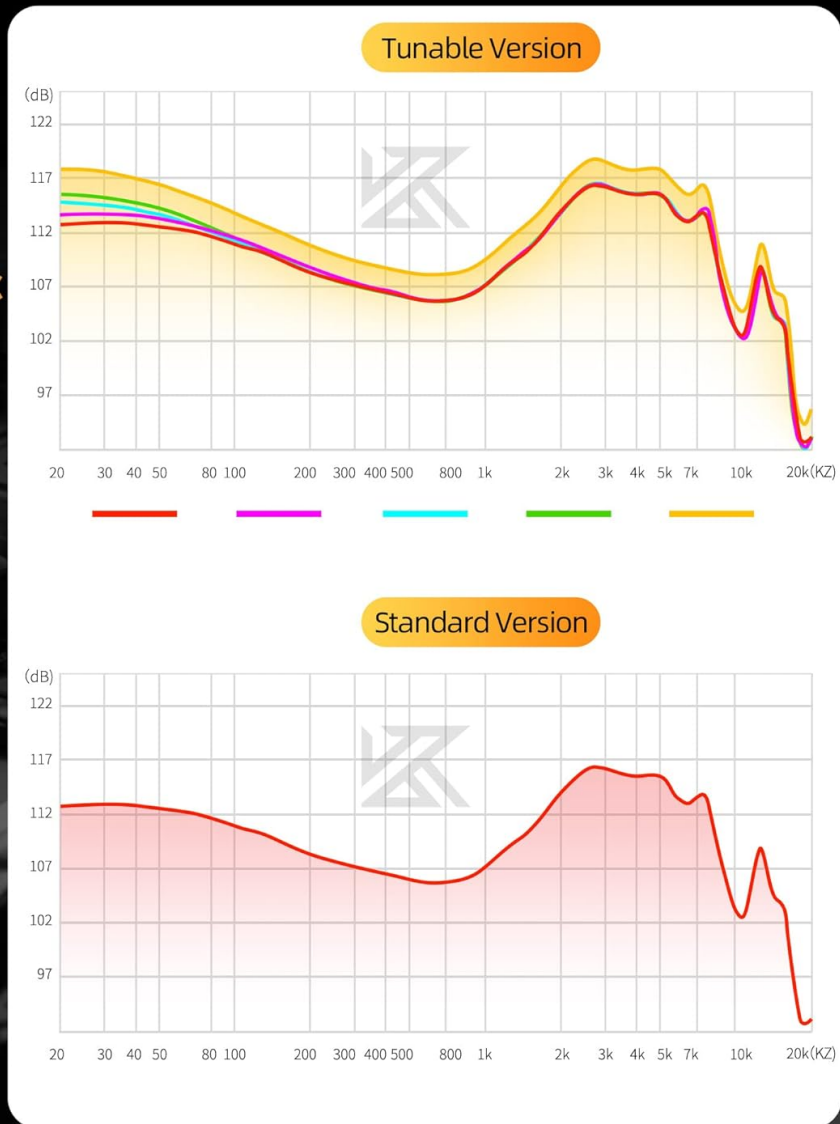


Figure 6: Frequency response curves for Tunable and Standard versions.

General Use

Connect the 3.5mm audio jack to your audio source (e.g., smartphone, music player, computer). Ensure the volume is set to a low level before playing audio to protect your hearing.

5. CARE AND MAINTENANCE

- **Cleaning:** Regularly clean the earbuds and ear tips with a soft, dry cloth. For ear tips, you may use a slightly damp cloth with mild soap and water, ensuring they are completely dry before reattaching. Do not use harsh chemicals or abrasive materials.
- **Cable Care:** The silver-plated cable is detachable. Handle it gently when connecting or disconnecting. Avoid sharp bends or excessive pulling to prevent damage.
- **Storage:** When not in use, store the earbuds in a clean, dry place, preferably in a protective case, to prevent dust accumulation and physical damage.
- **Avoid Moisture:** Keep the earbuds away from water and excessive humidity.

6. TROUBLESHOOTING

If you encounter any issues with your KZ D-Fi IEMs, please refer to the following common solutions:

- **No Sound or Intermittent Sound:**
 - Ensure the cable is securely connected to both the earbuds and the audio source.
 - Check the audio source volume and playback settings.
 - Test with a different audio source or cable to rule out component failure.
- **Poor Sound Quality (e.g., muffled, lacking bass):**
 - Ensure the ear tips create a proper seal in your ear canal. Try different sizes of ear tips.
 - Clean any debris from the earbud nozzles or ear tips.
 - For tunable versions, check the tuning switch settings.
- **Earbuds Uncomfortable or Falling Out:**
 - Experiment with different ear tip sizes to find the best fit.
 - Ensure the ear-wrap cable is correctly positioned over your ears.

If the issue persists, please contact customer support for further assistance.

7. TECHNICAL SPECIFICATIONS

Model Name	D-Fi
Brand	erjigo
Impedance	23.5Ω (Standard), 29Ω to 48Ω (Tunable)
Sensitivity	110±3dB
Frequency Response Range	7-45000Hz
Plug Type	3.5mm Jack
Pin Type	0.75mm
Wire Length	120±5cm
Wire Material	Double parallel silver plated wire
Housing Material	Metal
Ear Placement	In Ear
Noise Control	Sound Isolation
Audio Driver Type	Dynamic Driver
Item Weight	0.08 Kilograms (approx. 2.82 ounces)

8. WARRANTY AND SUPPORT INFORMATION

Your erjigo KZ D-Fi In-Ear Monitor Earbuds are covered by a manufacturer's warranty. Please refer to the warranty card included in your package or visit the official erjigo website for detailed warranty terms and conditions.

For technical support, troubleshooting assistance, or any product-related inquiries, please contact erjigo customer service through their official channels. Contact information can typically be found on the product packaging or the manufacturer's website.