

MOREFINE M9

MOREFINE M9 Mini PC User Manual

Comprehensive guide for setup, operation, and maintenance of your MOREFINE M9 Mini PC.

1. PRODUCT OVERVIEW

The MOREFINE M9 Mini PC is a compact and powerful desktop computer designed for various applications, from home entertainment to office work. It features a 12th Gen Intel AlderLake N100 processor, 16GB DDR4 RAM, and a 512GB M.2 NVME SSD, offering efficient performance in a small form factor. This manual provides detailed instructions to help you get the most out of your device.



Image: Front view of the MOREFINE M9 Mini PC, showcasing its compact design and front USB ports.

2. PACKAGE CONTENTS

Before proceeding with the setup, please verify that all items are present in the package:

- MOREFINE M9N100 Mini PC
- HDMI Cable (x1)
- US Plug Power Adapter
- Vesa Mount with Screws
- User Manual (this document)



Image: A visual representation of the package contents, including the Mini PC, HDMI cable, power adapter, VESA mount, and manual.

3. SETUP GUIDE

3.1 Connecting Peripherals

1. **Connect to Display:** Use the provided HDMI cable to connect the Mini PC to your monitor or TV. The M9 supports dual display output via two HDMI 2.0 ports, capable of 4K@60Hz resolution.
2. **Connect Power:** Plug the US Plug Power Adapter into the DC-in port on the Mini PC, then connect it to a power outlet.
3. **Connect Keyboard and Mouse:** Plug your USB keyboard and mouse into the available USB 3.2 ports on the Mini

PC.

4. **Network Connection (Optional):** For a wired connection, plug an Ethernet cable into the RJ45 LAN port. For wireless, ensure your Wi-Fi network is available during initial setup.

Multiple Port Design

Meet the needs of multiple scenarios



Reading Speed



Image: Diagram illustrating the various ports on the MOREFINE M9 Mini PC, including USB 3.2, HDMI, LAN, and Audio ports.

3.2 Initial Boot-up

After connecting all necessary peripherals and power, press the power button located on the front of the Mini PC. The system will boot into Windows 11 Pro. Follow the on-screen instructions to complete the initial Windows setup, including language, region, and network configuration.

4. OPERATING INSTRUCTIONS

4.1 Power On/Off

- **Power On:** Press the power button once. The power indicator light will illuminate.
- **Shut Down:** Click the Start button in Windows, then select Power > Shut down.
- **Restart:** Click the Start button in Windows, then select Power > Restart.

- **Sleep:** Click the Start button in Windows, then select Power > Sleep.

4.2 Dual Display Setup

The MOREFINE M9 Mini PC supports connecting two monitors simultaneously for an expanded workspace or immersive entertainment. Connect both monitors to the HDMI ports on the back of the Mini PC. Windows will automatically detect the displays. You can configure display settings (extend, duplicate, or show only on one) via the Display Settings in Windows.

Dual Screen Output

Expand workspace, boost productivity
and enjoy an immersive entertainment experience



HDMI 2.0(4K@60Hz)×2

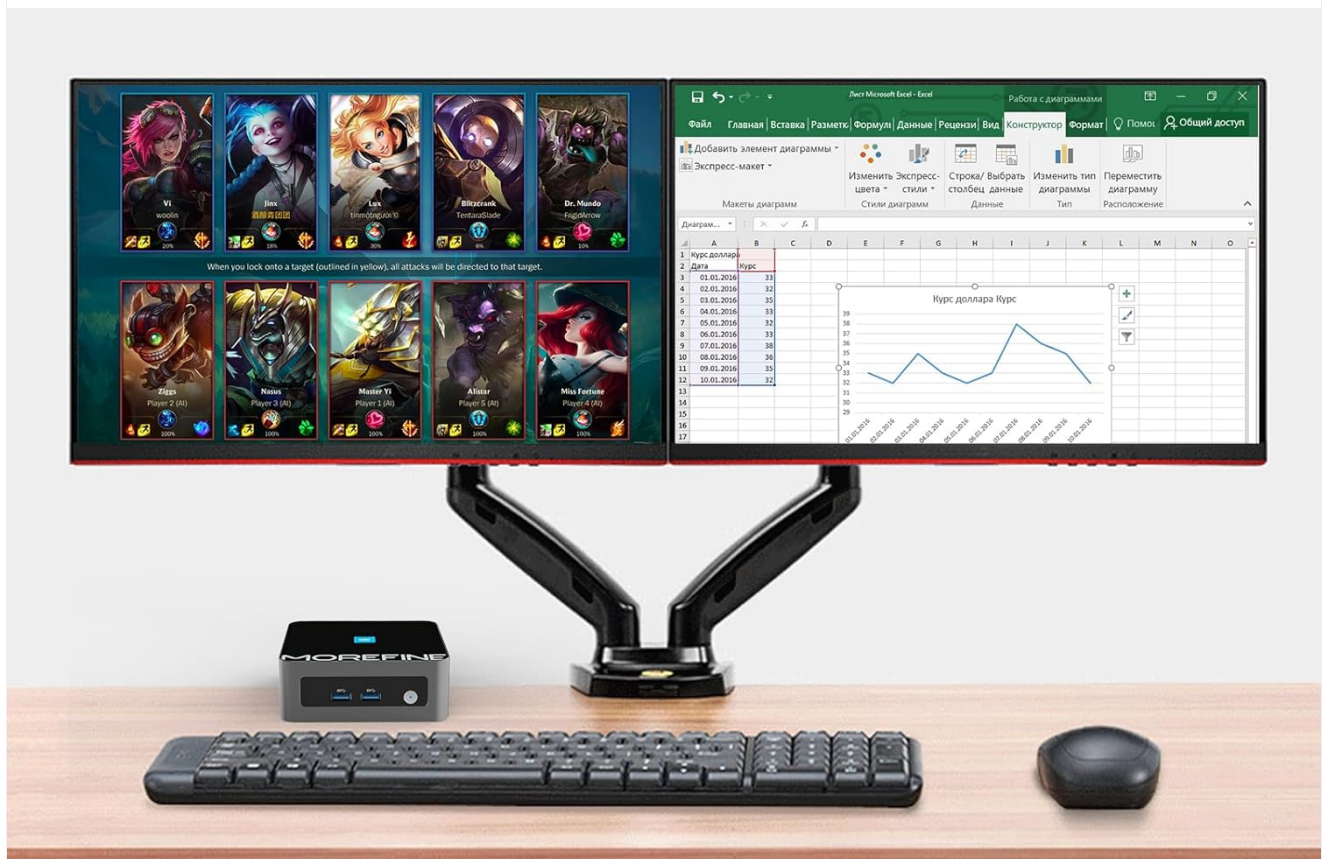


Image: Illustration of the MOREFINE M9 Mini PC connected to two monitors, demonstrating its dual screen output capability.

4.3 Network Connectivity

- **Wi-Fi:** The Mini PC supports Wi-Fi 6 (2.4G + 5G) for high-speed wireless internet access. To connect, click the Wi-Fi icon in the system tray, select your network, and enter the password.
- **Bluetooth:** Integrated Bluetooth 5.2 allows for wireless connection to peripherals such as headphones, speakers, and keyboards. Enable Bluetooth in Windows settings and pair your devices.
- **Wired LAN:** The 2500 Mb/s Gigabit Ethernet port provides a stable and fast wired network connection.

High-Speed Gigabit Network Connection Technology

2500 Mb/s



Image: Visual representation highlighting the high-speed network capabilities of the Mini PC, including WiFi 6, Bluetooth 5.2, and 2500 Mb/s Ethernet.

5. MAINTENANCE

5.1 General Care

- Keep the Mini PC in a clean, dry environment, away from direct sunlight, excessive heat, or moisture.
- Avoid placing objects on top of the Mini PC that could obstruct airflow.
- Clean the exterior with a soft, dry cloth. Do not use liquid cleaners or aerosols.

5.2 Cooling System

The MOREFINE M9 Mini PC is equipped with an efficient cooling system, including a silent fan and copper heat sink, to maintain optimal operating temperatures. Ensure the ventilation holes on the sides of the device are not blocked to allow proper airflow.

INTERNAL STRUCTURE

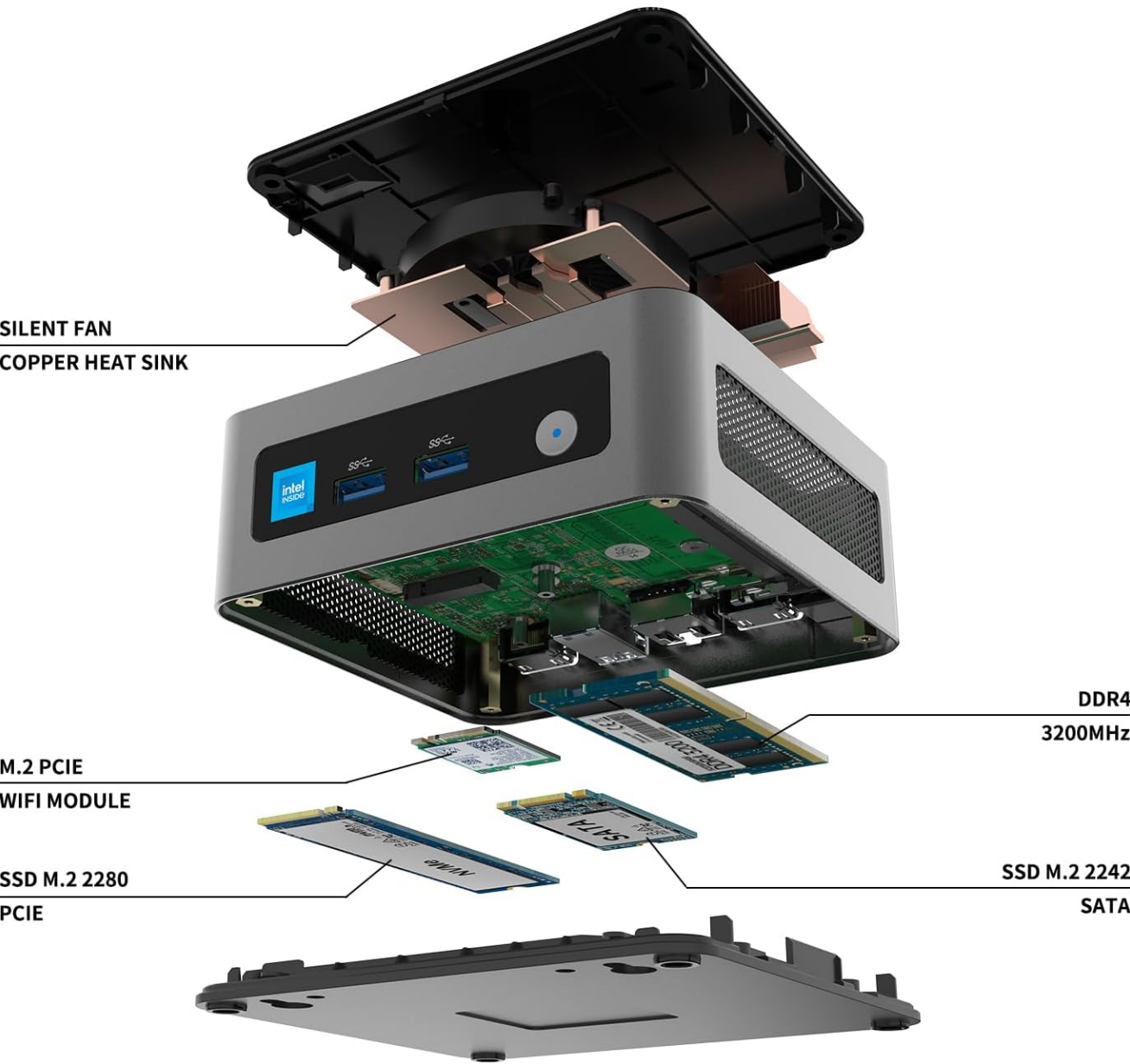


Image: Exploded view of the MOREFINE M9 Mini PC, showing its internal components including the silent fan and copper heat sink for effective cooling.

5.3 Software Updates

Regularly check for and install Windows updates to ensure your system has the latest security patches and performance improvements. Go to Settings > Windows Update to check for updates.

6. TROUBLESHOOTING

Problem	Possible Cause / Solution
No power / System does not turn on	Ensure the power adapter is securely connected to both the Mini PC and a working power outlet. Verify the power outlet is functional. Try a different power adapter if available and compatible.

Problem	Possible Cause / Solution
No display on monitor	<p>Check if the HDMI cable is securely connected to both the Mini PC and the monitor.</p> <p>Ensure the monitor is powered on and set to the correct input source (HDMI).</p> <p>Try a different HDMI cable or monitor if possible.</p>
No Wi-Fi connection	<p>Ensure Wi-Fi is enabled in Windows settings.</p> <p>Check if your Wi-Fi router is working correctly.</p> <p>Restart the Mini PC and your Wi-Fi router.</p> <p>Ensure correct Wi-Fi password is entered.</p>
Difficulty using the computer / Software issues	<p>Refer to Windows help and support resources.</p> <p>Ensure all drivers are up to date.</p> <p>Contact MOREFINE customer support for assistance (see Section 8).</p>

7. SPECIFICATIONS

Below are the key technical specifications of the MOREFINE M9 Mini PC:

**4 Cores**
Intel N100

**4 Threads**
6MB Smart Cache

**3.4 GHz**
Max Turbo Frequency


Wondows 11 pro



**Compact and Portable**
4.44 x 4.13 x 1.65 inches



**Power 36W**

**DDR4 3200 MHz**
Single Channel 16GB

**M.2 NVMe 2280**
512G SSD

**Cooling System**
1.Silent fan
2.Heat pipe/heat sink
3.Hard drive cooling cover

Image: Infographic detailing key features such as processor, RAM, storage, power, and cooling system.

Feature	Detail
Processor	12th Gen Intel AlderLake N100 (Up to 3.4GHz, 4 Cores, 4 Threads, 6MB Cache)
RAM	16GB DDR4 SDRAM (4800 MHz)
Storage	512GB M.2 NVME SSD
Operating System	Windows 11 Pro
Graphics	Integrated Intel UHD Graphics
Display Output	2 x HDMI 2.0 (Supports 4K@60Hz, Dual Display)
Wireless Connectivity	WiFi 6 (2.4G + 5G), Bluetooth 5.2
Wired Network	2.5 Gigabit Ethernet (RJ45)
USB Ports	USB 3.2 (quantity not specified, but images show multiple)
Audio	Audio Jack
Dimensions (LxWxH)	4.44 x 4.13 x 1.65 inches
Item Weight	1.85 pounds

12TH GEN INTEL

ALDER LAKE-N100 Processor

3.4 GHz
Max
Frequency

4 C/4T
4 Cores
4 Threads

6 MB
L3
Cache

7NM
Processor
Technology



Image: Detailed view of the 12th Gen Intel Alder Lake-N100 Processor, highlighting its specifications.

8. WARRANTY AND SUPPORT

MOREFINE is committed to providing high-quality products and excellent customer service. If you encounter any issues with your Mini PC, please refer to the following:

- **Defective Product:** If you find the mini computer defective, please contact MOREFINE customer service. They will provide solutions based on the situation.
- **Usage Difficulties:** If you have difficulty using the computer, contact MOREFINE store staff for solution tutorials.
- **Contact Information:** For support, please refer to the contact details provided with your product documentation or visit the official MOREFINE website.

Our products are manufactured, produced, and tested in strict accordance with industry standards, ensuring excellent quality and performance.

