

CaDA C65004W

CaDA C65004W 2-in-1 Wheel Loader & Bulldozer Building Kit Instruction Manual

1. INTRODUCTION

This manual provides detailed instructions for the assembly, operation, and maintenance of your CaDA C65004W 2-in-1 Construction Vehicle Building Kit. This kit allows you to construct either a functional Wheel Loader or a Bulldozer model from 693 high-quality building bricks. Designed to enhance operational skills and provide an engaging building experience, this model features manual controls and realistic mechanical functions.



Figure 1: Assembled CaDA C65004W Wheel Loader with packaging.

2. SETUP AND ASSEMBLY

Your CaDA C65004W kit contains 693 pieces required to build one of two construction vehicles. Please follow the included colorful, step-by-step instruction booklet carefully for a smooth assembly process. Ensure all pieces are accounted for before beginning construction.

2.1. Unpacking and Preparation

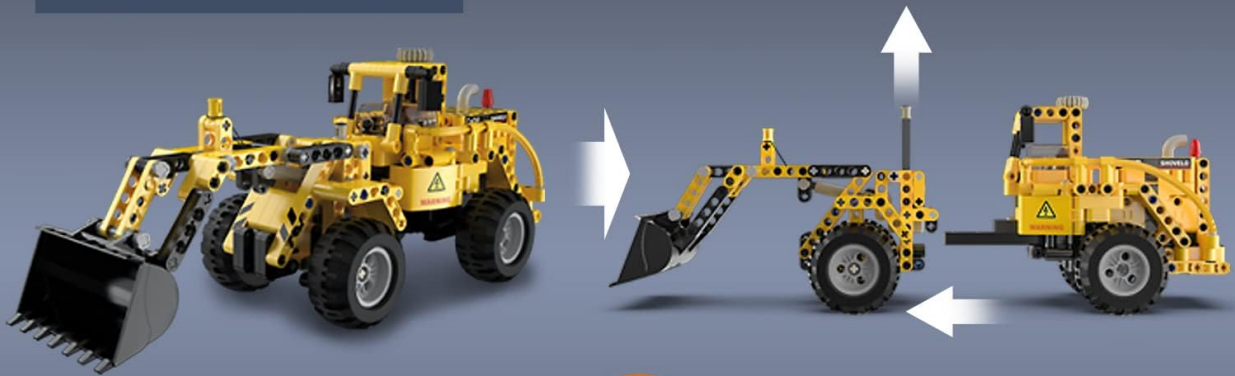
- Open the packaging and carefully remove all bags of building bricks.
- Organize the pieces by color or type as suggested in the instruction booklet to facilitate easier assembly.
- Keep the instruction booklet accessible throughout the building process.

2.2. Building the Model

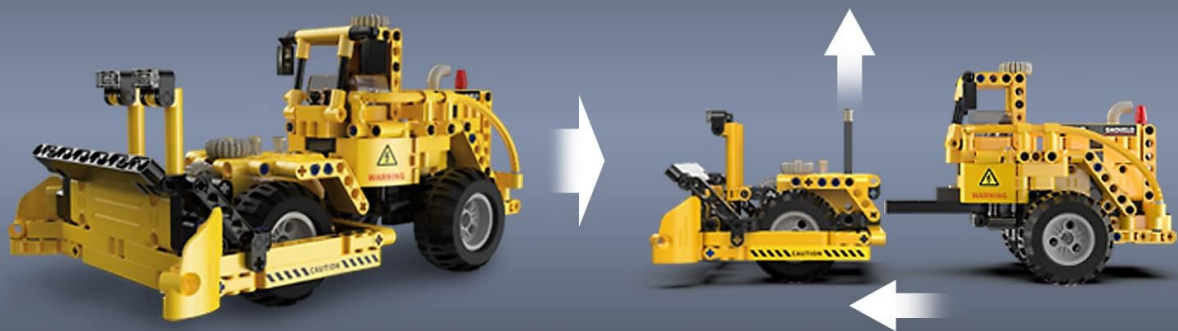
Refer to the detailed, colorful instructions provided in the box. Each step illustrates the required pieces and their placement. Pay close attention to the orientation of parts, especially gears and connecting pins, to ensure proper functionality.

2-in-1 Wheel Loader & Bulldozer

01 Wheel Loader



02 Wheel Bulldozer



Transformable Front

Figure 2: The 2-in-1 design allows transformation between a Wheel Loader and a Bulldozer.

The kit is designed for an entry-level building experience, suitable for ages 8 and up. Take your time and enjoy the construction process.

Video 1: Overview of CaDA Construction Vehicle functions, including the Wheel Loader and Bulldozer.

3. OPERATING THE MODEL

Once assembled, your CaDA C65004W model offers interactive manual control functions for a realistic play experience.

3.1. Wheel Loader Functions

- **Shovel Control:** Use the designated gears or levers to manually lift and lower the front shovel.
- **Steering:** Rotate the steering mechanism to control the direction of the vehicle.
- **Engine Simulation:** Observe the simulated engine pistons moving as the vehicle is operated, adding to the realistic experience.

3.2. Bulldozer Functions

- **Dozer Blade Control:** Adjust the angle and height of the front dozer blade using the manual controls.

- **Steering:** The bulldozer also features manual steering for directional control.

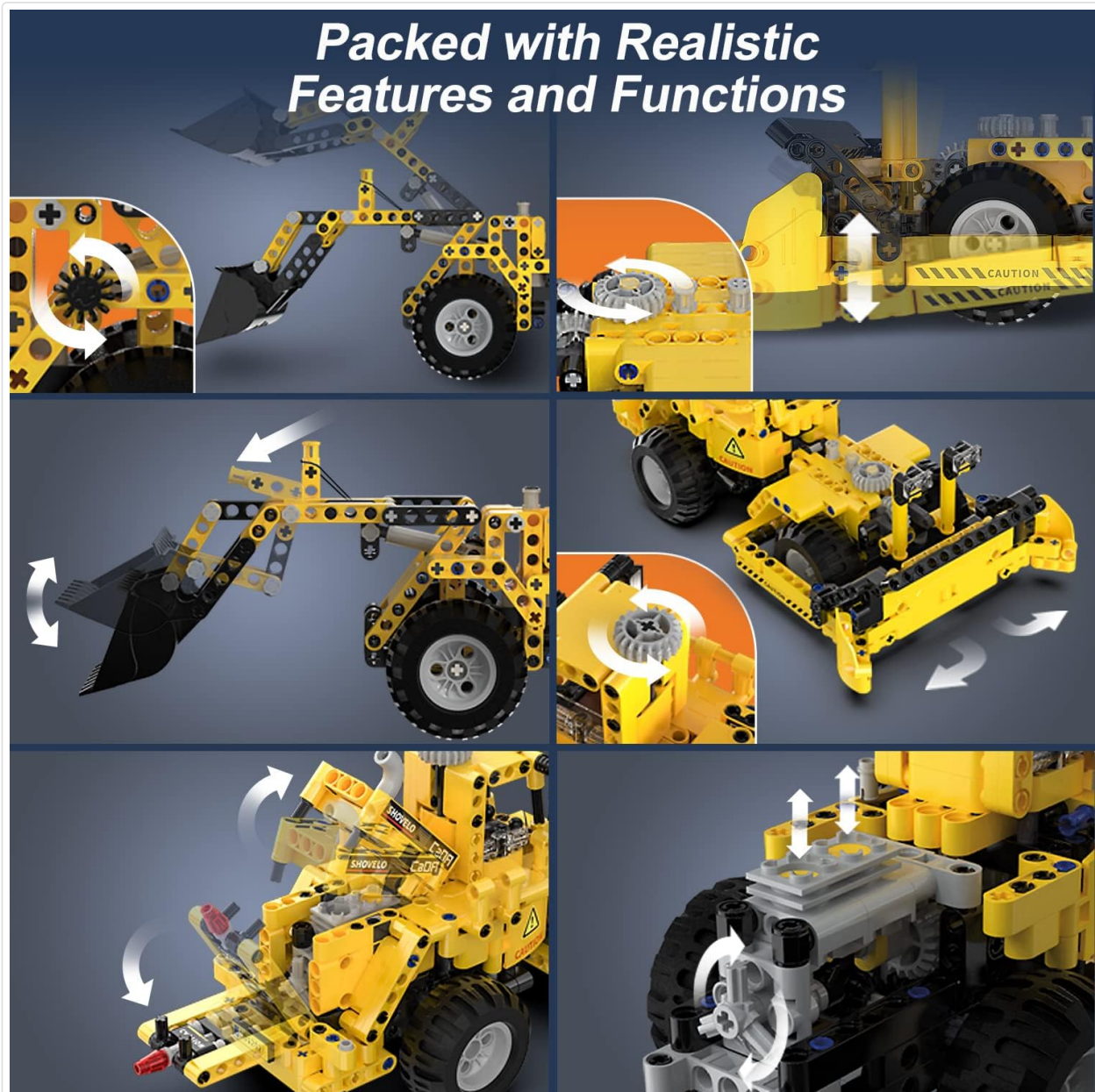


Figure 3: Detailed view of the functional arm, boom control, steering, and moving engine piston.

4. MAINTENANCE

Proper care will ensure the longevity and continued enjoyment of your CaDA building kit.

- **Cleaning:** Use a soft, damp cloth to gently wipe down the model. Avoid harsh chemicals or abrasive materials.
- **Storage:** Store the assembled model or unbuilt pieces in a cool, dry place away from direct sunlight and extreme temperatures.
- **Part Inspection:** Periodically check for any loose or damaged parts. Reattach or replace as necessary to maintain structural integrity and functionality.

5. TROUBLESHOOTING

If you encounter any issues during assembly or operation, please refer to the following common troubleshooting tips:

- **Missing Pieces:** In the rare event of missing pieces, please contact CaDA customer service for assistance.
- **Parts Not Fitting:** Double-check the instruction manual to ensure you are using the correct parts and that they are oriented correctly. Sometimes, a slight adjustment in pressure or angle is needed.
- **Functions Not Working:** Review the assembly steps for the specific mechanism that is not functioning. Ensure all gears are properly aligned and connected, and that no parts are obstructing movement.

6. SPECIFICATIONS

Feature	Detail
Product Model Number	C65004W
Number of Pieces	693
Product Dimensions	1 x 0.99 x 1 inches
Item Weight	2.31 pounds
Manufacturer Recommended Age	6 years and up
Functionality	2-in-1 build (Wheel Loader & Bulldozer), Manual control for arm/blade, Steering, Simulated engine



7. WARRANTY AND SUPPORT





CaDA takes pride in the quality of its products. This product comes with a 100% Satisfaction Guarantee. All products undergo rigorous machine inspections before packaging and delivery.

If you have any questions, require assistance, or need to report missing parts, please contact CaDA customer service. Our professional customer service staff will provide a satisfactory answer within 24 hours.

For customer service inquiries, please refer to the contact information provided on the product packaging or the official CaDA website.

Related Documents - C65004W

	CaDA C61081 Functional Crane Truck Assembly Instructions Detailed assembly instructions for the CaDA C61081 Functional Crane Truck, a 1831-piece building set for ages 8+.
	CaDA Master Mechanical Safe Building Set Instructions Detailed instructions for assembling the CaDA Master Mechanical Safe building block set. Learn how to construct and understand the mechanics of this intricate model.

	<p>CaDA C61082 Functional Excavator Building Instructions</p> <p>This comprehensive instruction manual guides builders through the assembly of the CaDA C61082 Functional Excavator, a detailed 1702-piece construction toy. Discover the process of building a realistic replica of an excavator with this step-by-step guide from CaDA.</p>
	<p>CADA Street Coffee Shop Building Blocks Assembly Instructions C66005</p> <p>Step-by-step assembly guide for the CADA Street Coffee Shop building block set (C66005), featuring a personal introduction from the designer, Ohsojang.</p>
	<p>CaDA C51073W Blue Race Car Building Blocks Assembly Instructions</p> <p>Detailed assembly instructions for the CaDA C51073W Blue Race Car building block set, featuring 325 pieces and dual mode control. Suitable for ages 6+.</p>
	<p>CaDA C55052 Velocity Hurricane Building Instructions</p> <p>Step-by-step assembly guide for the CaDA C55052 Velocity Hurricane building toy car. Detailed instructions and parts list for constructing the model.</p>