

## VILTROX Sprite 15B

# VILTROX Sprite 15B 18W CCT LED Panel Video Light User Manual

Model: Sprite 15B

## 1. SAFETY INFORMATION

Please read all safety instructions carefully before using the VILTROX Sprite 15B LED Panel Video Light. Retain this manual for future reference.

- Do not expose the device to water or excessive humidity.
- Avoid direct eye exposure to the LED light source, as it can cause discomfort or damage.
- Do not disassemble or modify the product. Repairs should only be performed by authorized service personnel.
- Keep the device away from heat sources and direct sunlight.
- Use only the specified battery (NP-F550) and charging cable (USB-C) provided or recommended by VILTROX.
- Dispose of batteries according to local regulations. Do not incinerate.

## 2. PRODUCT OVERVIEW

The VILTROX Sprite 15B is a versatile 18W CCT LED panel video light designed for photography and videography. It offers adjustable color temperature, dimmable brightness, and smart control features.



Image: The VILTROX Sprite 15B LED light, showcasing its compact design, removable battery, and a smartphone displaying its control application.

## 2.1 Key Features

- **CCT Mode:** Adjustable color temperature from 2800K (warm) to 6800K (cool) to match various lighting conditions.
- **Constant Power Output:** Maintains a consistent 18W power output even when adjusting color temperature.
- **Bluetooth App Control:** Control multiple devices simultaneously via a smartphone app for simplified lighting setup.
- **Special Lighting Effects:** Includes 10 pre-programmed lighting effects for creative video production.
- **Precise Dimming:** Brightness adjustable from 1% to 100% with 100-level accuracy for smooth transitions and accurate light levels.
- **Rechargeable Battery:** Equipped with a 2200 mAh Lithium Battery, providing approximately 80 minutes of operation at maximum brightness.
- **USB-C Power:** Supports Type-C power input for flexible charging and continuous power options.
- **Soft Light Output:** Features a professional frosted surface to diffuse glare, producing soft and uniform illumination.

## 2.2 What's in the Box



Image: Contents of the VILTROX Sprite 15B package. Shown are the LED light panel, a cold shoe adapter, an NP-F550 battery, and a USB-C charging cable.

- VILTROX Sprite 15B LED Light
- Cold Shoe Adapter
- NP-F550 Battery
- USB-C Charging Cable

## 2.3 Component Identification



Image: Rear panel of the VILTROX Sprite 15B. Visible components include the ON/OFF switch, battery compartment, mode button, control dial, and CH/GR (Channel/Group) button.

1. **ON/OFF Switch:** Powers the device on or off.
2. **Battery Compartment:** Houses the NP-F550 battery.
3. **USB-C Port:** For charging and external power supply.
4. **Mode Button:** Toggles between CCT mode and special effects mode.
5. **Control Dial:** Adjusts brightness, color temperature, or effect parameters. Press to confirm selections.
6. **CH/GR Button:** Selects channel or group for multi-light control.
7. **Display Screen:** Shows current settings (brightness, color temperature, battery level, channel/group).

## 3. SETUP

### 3.1 Battery Installation

1. Locate the battery compartment on the rear of the light.
2. Insert the NP-F550 battery into the compartment, ensuring the contacts align correctly.
3. Gently push the battery until it clicks into place.

### 3.2 Mounting the Light

# 18W 1720Lux@0.5m



Image: The VILTROX Sprite 15B LED light attached to a camera via its cold shoe adapter, demonstrating typical usage.

1. Attach the cold shoe adapter to the 1/4-inch screw hole at the bottom of the LED light.
2. Securely tighten the adapter.
3. Slide the cold shoe adapter into your camera's hot shoe mount or a compatible light stand.
4. Tighten the locking ring on the cold shoe adapter to secure the light in position.

### **3.3 Charging the Battery**





Image: The VILTROX Sprite 15B LED light connected to a USB-C charging cable, indicating the charging process.

- Connect the provided USB-C charging cable to the USB-C port on the light.
- Connect the other end of the cable to a compatible USB power adapter (5V/2A or 9V/2A recommended).
- The display screen will indicate the charging status.
- The light can be used while charging.

## 4. OPERATION

### 4.1 Power On/Off

Slide the **ON/OFF** switch located on the rear panel to the "ON" position to power on the light. Slide it to "OFF" to power off.

### 4.2 Adjusting Color Temperature (CCT Mode)

# Color Temperatuer 2800K-6800K

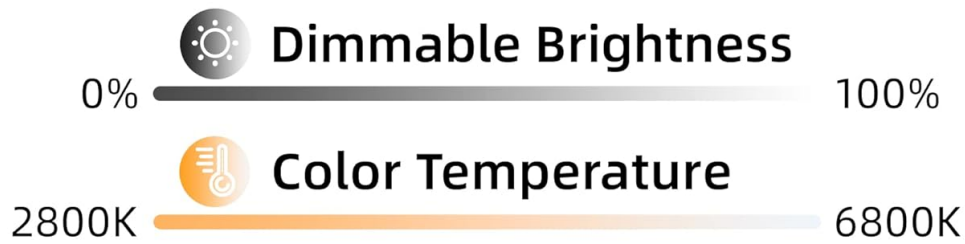


Image: Demonstrates the adjustable color temperature range of the VILTROX Sprite 15B, showing a warm 2800K light on the left and a cool 6800K light on the right.

1. Ensure the light is in CCT mode. If not, press the **MODE** button until "CCT" or a similar indicator appears on the display.
2. Rotate the **Control Dial** to adjust the color temperature between 2800K and 6800K. The display will show the current Kelvin value.

## 4.3 Adjusting Brightness

1. In CCT mode, press the **Control Dial** once to switch to brightness adjustment. The brightness percentage will blink on the display.
2. Rotate the **Control Dial** to adjust the brightness from 1% to 100%.
3. Press the **Control Dial** again to confirm the setting or to switch back to color temperature adjustment.

## 4.4 Special Effects Mode

1. Press the **MODE** button to cycle through available modes until you reach the special effects mode.
2. Rotate the **Control Dial** to select from the 10 available lighting effects.
3. Press the **Control Dial** to enter the selected effect's parameters (if applicable) and adjust them.

## 4.5 Bluetooth App Control

# Always at hand



Image: A user controlling two VILTROX Sprite 15B LED lights remotely via a smartphone application, demonstrating the Bluetooth control feature in a content creation setting.

1. Download the VILTROX app from your smartphone's app store.
2. Ensure Bluetooth is enabled on your smartphone and the LED light is powered on.
3. Open the VILTROX app and follow the on-screen instructions to pair your device(s).
4. Use the app interface to adjust brightness, color temperature, select special effects, and manage multiple lights by assigning them to channels or groups using the **CH/GR** button on the light.

## 5. MAINTENANCE

- **Cleaning:** Use a soft, dry cloth to clean the light panel and body. Do not use abrasive cleaners or solvents.
- **Battery Care:** For optimal battery life, avoid fully discharging the battery frequently. Charge the battery regularly, even if not in use for extended periods.
- **Storage:** Store the light in a cool, dry place away from direct sunlight and extreme temperatures. Remove the battery if storing for a long duration.



## 6. TROUBLESHOOTING

Problem	Possible Cause	Solution
Light does not turn on.	Battery is depleted or not installed correctly.	Ensure battery is fully charged and correctly inserted. Check ON/OFF switch position.
Battery not charging.	Faulty USB-C cable or power adapter.	Try a different USB-C cable and power adapter. Ensure the power adapter meets specifications (5V/2A or 9V/2A).
Bluetooth app cannot connect.	Bluetooth is off on phone or light, or app issue.	Ensure Bluetooth is enabled on both devices. Restart the app and the light. Try re-pairing the device in the app.
Light output is inconsistent or flickers.	Low battery or internal issue.	Charge the battery fully. If the problem persists, contact customer support.

## 7. SPECIFICATIONS

Feature	Detail
Model Number	Sprite 15B
Power	18W
Color Temperature Range	2800K - 6800K
Max Brightness	1720 Lux @ 0.5m
CRI (Color Rendering Index)	≥95
Dimming Range	1% - 100%
Beam Angle	120°
Battery Type	NP-F550 Lithium Ion (2200 mAh)
Battery Life (Max Brightness)	Approx. 80 minutes
Power Supply	USB-C (5V/2A, 9V/2A)
Item Weight	1.28 pounds (approx. 580g)
Dimensions (L x W x H)	175.8mm x 112.4mm x 39mm (approx.)
Manufacturer	Shenzhen Jueying Technology Co., Ltd.

Note: Specifications are subject to change without prior notice.

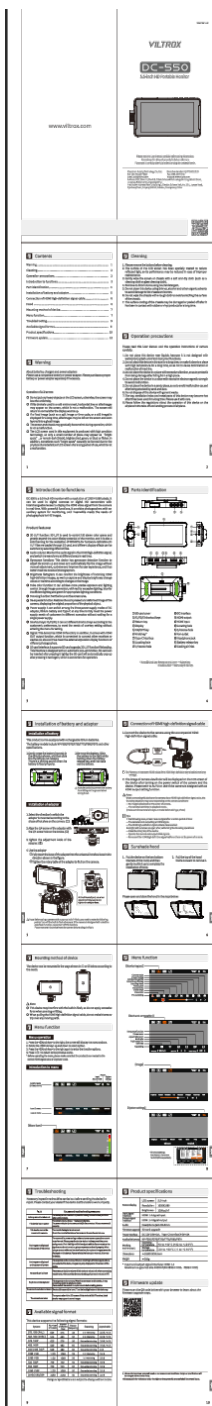
## 8. WARRANTY AND SUPPORT

VILTROX products come with a standard manufacturer's warranty. For detailed warranty information, product support, or service inquiries, please visit the official VILTROX website or contact their customer service.

**Related Documents - Sprite 15B**

	<p><a href="#">Viltrox DC-550 Pro 5.5-inch Touchscreen HD Monitor User Manual</a></p> <p>This user manual provides detailed instructions for the Viltrox DC-550 Pro, a 5.5-inch touchscreen HD monitor with a resolution of 1920x1080 pixels. It covers features, operation, installation, troubleshooting, and specifications for professional photography and videography.</p>
--	--





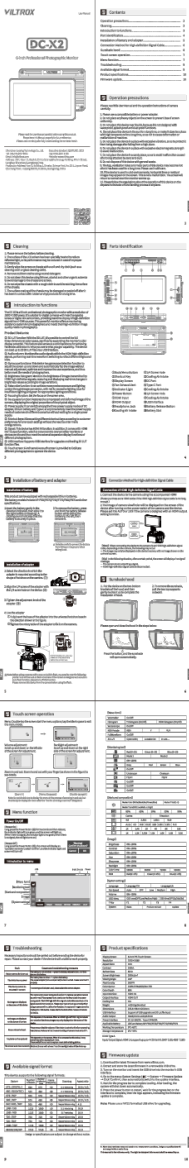
### [Viltrox DC-550 5.5-inch HD Portable Monitor User Manual](#)

User manual for the Viltrox DC-550, a 5.5-inch HD portable monitor with 1920x1080 resolution, featuring 3D LUT, audio monitoring, gyroscope, brightness histogram, false color, focus peaking, de-squeeze, multiple power options, and shortcut keys. Includes installation, operation, menu functions, troubleshooting, specifications, and available signal formats.



[Viltrox K60 RGB Tube Lamp User Manual](#)

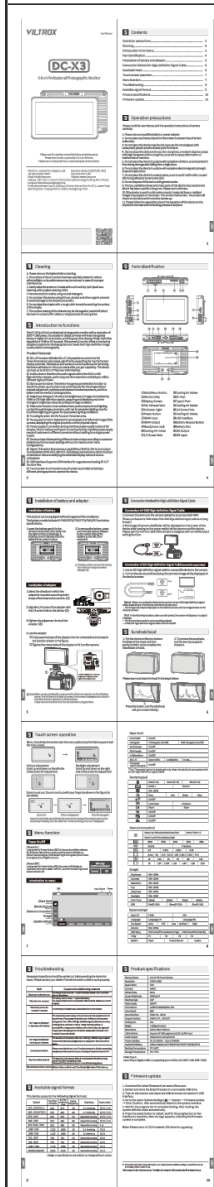
User manual for the Viltrox K60 handheld RGB tube lamp, detailing its features, specifications, and operation. The K60 offers 20W max power, high lighting effect, accurate color temperature, and high color rendering.



[Viltrox DC-X2 6-inch Professional Photography Monitor User Manual](#)

This user manual provides detailed instructions for the Viltrox DC-X2, a 6-inch professional photography monitor. It covers features such as 3D LUT, audio columns, gyroscope function, brightness histogram, false color, focus assist, and more. Learn about installation, operation, troubleshooting, and specifications.





[Viltrox DC-X3 6-Inch Professional Camera Monitor User Manual](#)

This manual provides comprehensive instructions for the Viltrox DC-X3, a 6-inch professional camera monitor. It covers features like 3D LUT, audio monitoring, gyroscope function, brightness histogram, false color, focus assist, and more. Learn about component identification, battery installation, signal connections, touchscreen operation, menu functions, troubleshooting, available signal formats, product specifications, and firmware updates.

