

## Manuals+

[Q & A](#) | [Deep Search](#) | [Upload](#)

manuals.plus /

- › [GEODMAER](#) /
- › [GEODMAER Foldable Bluetooth Keyboard Instruction Manual](#)

## GEODMAER Foldable Bluetooth Keyboard

# GEODMAER Foldable Bluetooth Keyboard Instruction Manual

Model: Foldable Bluetooth Keyboard | Brand: GEODMAER



## INTRODUCTION

This manual provides detailed instructions for setting up, operating, and maintaining your GEODMAER Foldable Bluetooth Keyboard. Please read this manual thoroughly before using the product to ensure optimal performance and longevity.

## PRODUCT FEATURES

- Full-size keyboard with numeric keypad and large touchpad for comprehensive input.
- Triple-folding design for maximum portability.
- Durable PU leather covering for protection against scratches and damage.
- Multi-device compatibility (iOS, Android, Windows, Mac) with up to 3 Bluetooth channels.
- Long-lasting battery: 50 hours of continuous use on a 2-hour charge.
- Quiet and low-profile keys for comfortable typing.

## WHAT'S IN THE BOX

- GEODMAER Foldable Bluetooth Keyboard
- USB Cable (for charging)

## SETUP

### 1. Charging the Keyboard

Before first use, fully charge the keyboard. Connect the provided USB cable to the Type-C charging port on the keyboard and to a USB power source. The charging indicator light will show the charging status.



Image: Close-up of the keyboard's Type-C charging port with a USB cable connected, illustrating the charging process.

A full charge takes approximately 2 hours and provides up to 50 hours of continuous use.

## 2. Power On/Off

To power on the keyboard, unfold it completely. The power switch is located near the touchpad. Slide the switch to the "ON" position. To power off, fold the keyboard back into its compact form.

Your browser does not support the video tag.

Video: Demonstrates unfolding the keyboard to power it on and folding it to power it off. This video also shows the physical layout and folding mechanism.

## 3. Bluetooth Pairing

The keyboard supports up to three Bluetooth devices. Follow these steps to pair your device:

1. Ensure the keyboard is powered on.
2. On your device (smartphone, tablet, laptop), enable Bluetooth and search for new devices.
3. To enter pairing mode for Bluetooth Channel 1, press and hold the **FN + A** button for 5 seconds. The Bluetooth

indicator light will flash slowly.

4. Select "Bluetooth Keyboard" from the list of available devices on your screen.
5. Once connected, the Bluetooth indicator light will stop flashing.
6. Repeat for Channel 2 (**FN + S**) and Channel 3 (**FN + D**) if you wish to pair additional devices.



Image: Visual guide showing the FN+A/S/D keys for multi-device pairing and the Bluetooth indicator lights.

## 4. Operating System Selection

To ensure proper key mapping and functionality, select the correct operating system for your connected device:

- For iOS devices: Press **FN + Q**
- For Android devices: Press **FN + W**
- For Windows devices: Press **FN + E**
- For Mac OS devices: Press **FN + R**

# SYNC UP TO 3 DEVICES

Long press FN+A/S/D button for 5 seconds to enter Bluetooth pairing mode. When three Bluetooth devices are connected, switch the devices by short pressing FN+A/S/D.

DEVICE 1 **FN + 1**



DEVICE 2 **FN + 2**



DEVICE 3 **FN + 3**



Image: Shows the FN key combinations for selecting iOS, Android, Windows, and Mac operating systems.

## OPERATING THE KEYBOARD

### 1. General Typing

The keyboard features a standard QWERTY layout with a numeric keypad for efficient data entry. The low-profile keys provide a comfortable and quiet typing experience.

# COMPACT & PORTABLE



Image: Close-up view of the keyboard keys, highlighting their low-profile design for comfortable typing.

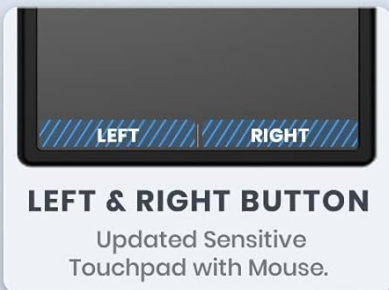
## 2. Touchpad Usage

The integrated large touchpad allows for precise navigation without the need for an external mouse. It supports various multi-finger gestures for enhanced productivity.

# LARGER & MORE SENSITIVE TOUCHPAD

It Gives You the Same Experience As a Laptop.

Makes It Easier and More Efficient to Control Your Device Without a Mouse.



**NOTE:** The touchpad does NOT work with system below IOS 13!

Image: Illustration of the large touchpad with designated left and right click areas, emphasizing its sensitivity.

**Note:** The touchpad does NOT work with systems below iOS 13.

## 3. Multi-Device Switching

To switch between previously paired devices (Channel 1, 2, or 3), simply short press the corresponding **FN + A**, **FN + S**, or **FN + D** button. The keyboard will automatically connect to the selected device.

## WITH ANTI-SLIP PADS

Will Not Slide Around

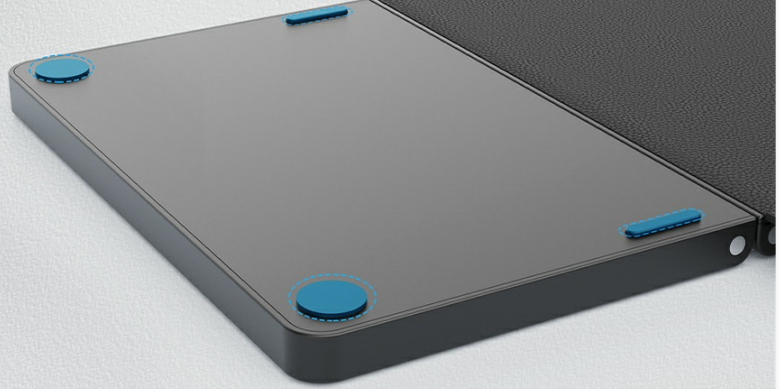


Image: Depicts the keyboard connecting to three different devices (tablet, PC, smartphone) using the FN+A/S/D keys.

## 4. Touchpad Lock/Unlock

To prevent accidental touches on the touchpad while typing, you can lock or unlock it by pressing **FN + Spacebar**.

Your browser does not support the video tag.

Video: Shows how to lock and unlock the touchpad using the FN + Spacebar combination.

## MAINTENANCE

---

### 1. Cleaning

To clean the keyboard, gently wipe the surface with a soft, damp cloth. Avoid using harsh chemicals or abrasive materials that could damage the finish or keys. Ensure the keyboard is powered off before cleaning.

### 2. Storage

When not in use, fold the keyboard to protect it. The magnetic closure will keep it securely closed. Store it in a cool, dry place away from direct sunlight and extreme temperatures.



Image: Close-up of the keyboard's magnetic closure, demonstrating how it keeps the device securely folded.

## TROUBLESHOOTING

---

### • Keyboard not pairing/connecting:

- Ensure the keyboard is fully charged.
- Verify Bluetooth is enabled on your device.
- Make sure you are holding the FN + A/S/D button for the required 5 seconds to enter pairing mode.
- Try forgetting the device on your host system's Bluetooth settings and re-pairing.

- Ensure the keyboard is within the effective connection distance of 33 feet (10 meters).
- **Touchpad not working:**
  - Ensure the touchpad is not locked (press FN + Spacebar to toggle).
  - If using an iOS device, ensure your system is iOS 13 or higher, as the touchpad is not compatible with older versions.
  - Check if the assistive touch feature is enabled on your iPhone settings for touchpad functionality.
- **Keys not responding or typing incorrectly:**
  - Confirm the correct operating system is selected (FN + Q/W/E/R).
  - Recharge the keyboard if the battery is low.
  - Restart both the keyboard and the connected device.

## SPECIFICATIONS

Feature	Detail
Product Dimensions (Folded)	5.98 x 3.94 x 0.79 inches
Item Weight	11.7 ounces
Connectivity Technology	Bluetooth
Compatible Devices	Laptop, Tablet, Smartphone (iOS, Android, Windows, Mac)
Battery Type	1 Lithium Ion battery (included)
Battery Life (Continuous Use)	Up to 50 hours
Charging Time	Approx. 2 hours
Number of Keys	81
Special Features	Portable, Ergonomic, Foldable, Rechargeable, Touchpad, Numeric Keypad

## WARRANTY AND SUPPORT

GEODMAER offers superior after-sales support for its products. If you encounter any issues or have questions regarding your Foldable Bluetooth Keyboard, please contact our support team. Our team is available to provide prompt resolutions within 12 hours.

For further assistance, please visit the official GEODMAER store or contact customer service through your purchase platform.

Please retain your proof of purchase for warranty claims.

