

[Manuals.plus](#) /

> [XDOVET](#) /

> XDOVET Dual-Action Trigger Airbrush Kit Instruction Manual - Model BJPB-003

XDOVET BJPB-003

XDOVET Dual-Action Trigger Airbrush Kit Instruction Manual

Model: BJPB-003

1. INTRODUCTION

Thank you for choosing the XDOVET Dual-Action Trigger Airbrush Kit. This manual provides essential information for the proper setup, operation, and maintenance of your airbrush kit. Please read these instructions thoroughly before use to ensure optimal performance and longevity of your equipment. This kit is designed for various applications including art painting, cake decoration, nail art, crafts, model coloring, illustrations, temporary tattoos, and hobbies.

2. PRODUCT OVERVIEW AND COMPONENTS

The XDOVET Dual-Action Trigger Airbrush Kit includes a comprehensive set of tools and accessories to support your creative projects. Familiarize yourself with the components listed below.



Figure 2.1: Complete XDOVET Dual-Action Trigger Airbrush Kit showing the airbrush gun, various paint cups, needles, nozzles, air hose, and cleaning tools.

2.1 Airbrush Gun Features

1/16 & 1/6 & 1/2 & 2/3 & 3/2 oz
High density metal Gravity Fluid Cups



Micro Airflow Adjustment
Control Valve

Ergonomic trigger switch

Preset Fluid Control knob

2 Piece System Precision Head System
Includes Self-Centering Dop-in
Nozzles for High Fluid Flow
Screw Ring , Nozzle Cap.
Fluid Nozzle , & Air Cap



0.3mm Needle

0.5mm Needle

0.8mm Needle

Figure 2.2: Detailed view of the airbrush gun highlighting key features such as the Micro Airflow Adjustment Control Valve, Ergonomic Trigger Switch, Preset Fluid Control Knob, and the 2-piece Precision Head System with self-centering drop-in nozzles.

- **Dual-Action Trigger:** Allows independent control of both air and fluid flow by pulling the trigger back for paint and pressing down for air.
- **Micro Airflow Adjustment Control Valve:** Provides precise control over the air pressure at the airbrush.
- **Preset Fluid Control Knob:** Adjusts the maximum amount of paint that can be sprayed, allowing for consistent lines and patterns.
- **Nozzle Needle Sizes:** Includes 0.3mm, 0.5mm, and 0.8mm needles and corresponding nozzles for various spray patterns and detail levels.

2.2 Included Accessories



Figure 2.3: All components of the airbrush kit, including the dual-action airbrush, various paint cups (2cc, 5cc, 13cc, 20cc, 40cc), multiple nozzle and needle sets, an air hose, and a cleaning brush set.

- **Paint Cups:** 2cc, 5cc, 13cc, 20cc, and 40cc capacities for different project sizes. Metal cups are durable for medium use, while plastic cups are easy to clean and suitable for larger volumes.
- **Air Hose:** A 1.8-meter (approximately 6-foot) air hose with a universal 1/8 interface, compatible with most air compressors.
- **Cleaning Kit:** Brushes and tools for thorough cleaning and maintenance.
- **Replacement O-rings:** Included for maintenance and to ensure a proper seal.

3. SETUP INSTRUCTIONS

Follow these steps to set up your XDOVET airbrush kit for first use:

1. **Unpack Components:** Carefully remove all items from the packaging and verify that all listed components are present.
2. **Select Nozzle and Needle:** Choose the appropriate nozzle and needle size (0.3mm, 0.5mm, or 0.8mm) for your project. The 0.3mm needle is typically pre-installed. Ensure the selected needle matches the nozzle.
3. **Attach Paint Cup:** Securely screw the desired paint cup onto the top of the airbrush gun.
4. **Connect Air Hose:** Attach one end of the 1.8-meter air hose to the air inlet at the bottom of the airbrush gun and the other end to your air compressor. Ensure a secure connection to prevent air leaks.

5. **Compressor Settings:** Ensure your air compressor is set to a working pressure between 15-50 psi. This airbrush kit does not include a compressor.
6. **Initial Test with Water:** Before adding any pigment, fill the paint cup with pure water. Test the atomization effect by spraying onto a test surface. This helps to flush out any manufacturing residue and ensures proper function.

4. OPERATING INSTRUCTIONS

Operating your dual-action airbrush involves coordinating air and fluid flow for precise results.



Figure 4.1: Illustration of the dual-action trigger mechanism, where pressing down controls air and pulling back controls paint flow.

1. **Prepare Paint:** Dilute your paint to the appropriate consistency. For best results, especially with water-based paints, ensure the paint is not too thick or too thin. Test consistency on a scrap surface.
2. **Fill Paint Cup:** Pour the prepared paint into the attached paint cup.
3. **Initiate Airflow:** Press down on the dual-action trigger to start the airflow.
4. **Control Paint Flow:** While maintaining airflow, pull the trigger back to release paint. The further you pull back, the more paint will be sprayed.
5. **Adjust Spray Pattern:**
 - **Fine Lines:** Use a 0.3mm needle and pull the trigger back minimally.
 - **Broad Coverage:** Use a 0.8mm needle and pull the trigger back further.
6. **Adjust Fluid Control Knob:** The knob at the rear of the airbrush limits how far the needle can retract, thus controlling the maximum paint flow. Turn clockwise for thinner lines (less paint) and counter-clockwise for thicker lines (more paint).

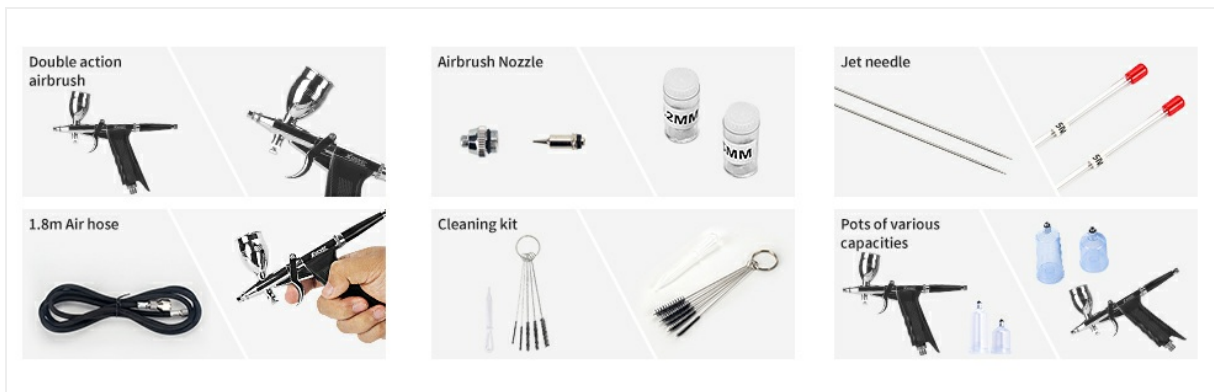


Figure 4.2: The preset fluid control knob allows adjustment of the maximum paint flow, enabling control from the thinnest to the thickest spray patterns.

4.1 Applications



Figure 4.3: The versatility of the XDOVET airbrush kit is demonstrated across various fields such as barbering, model coloring, cake decoration, and manicures.

This airbrush is suitable for a wide range of applications:

- **Model Coloring:** Achieve detailed and smooth finishes on models.
- **Nail Art & Makeup:** Create intricate designs and even cosmetic applications.
- **Cake Decoration:** Apply edible colors with precision.
- **Art & Illustrations:** Produce fine art and detailed illustrations.
- **Temporary Tattoos:** Apply temporary tattoo designs.

5. MAINTENANCE

Proper cleaning and maintenance are crucial for the longevity and performance of your airbrush.

1. **Immediate Cleaning:** After each use, especially with pigment, clean the airbrush thoroughly as soon as possible to prevent paint from drying and blocking the nozzle.
2. **Basic Cleaning:**

- Empty any remaining paint from the cup.
 - Add a small amount of appropriate airbrush cleaner or water (for water-based paints) to the cup.
 - Spray the cleaner through the airbrush until it runs clear.
 - Use a cleaning brush to clean the inside of the paint cup.
3. **Thorough Cleaning (Disassembly):** Periodically, or if clogging occurs, disassemble the airbrush for a deeper clean.
- Carefully remove the needle, nozzle cap, and nozzle.
 - Use the provided cleaning brushes and cleaner to remove any dried paint from the needle, nozzle, and airbrush body.
 - Inspect O-rings for wear and replace if necessary using the spare O-rings provided.
 - Reassemble the airbrush, ensuring all parts are securely fitted.
4. **Storage:** After cleaning, store the airbrush and its components in the original box or a suitable protective case, out of reach of children.

6. TROUBLESHOOTING

Here are solutions to common issues you might encounter:

Problem	Possible Cause	Solution
No paint flow or sputtering	Clogged nozzle or needle, paint too thick, insufficient air pressure.	Clean nozzle and needle thoroughly. Dilute paint to proper consistency. Increase air pressure (within 15-50 psi range).
Air bubbles in paint cup	Loose nozzle, damaged nozzle, or bent needle.	Tighten nozzle. Inspect nozzle for damage and replace if necessary. Check needle for bends and straighten or replace.
Uneven spray pattern	Partially clogged nozzle, bent needle tip, or inconsistent air pressure.	Perform thorough cleaning. Inspect needle tip. Ensure consistent air supply from compressor.
Trigger sticking	Dried paint or lubricant buildup.	Disassemble and clean the trigger mechanism. Apply a small amount of airbrush-safe lubricant if needed.

7. SPECIFICATIONS

- **Model Number:** BJPB-003
- **Needle/Nozzle Sizes:** 0.3mm, 0.5mm, 0.8mm
- **Paint Cup Capacities:** 2cc, 5cc, 13cc, 20cc, 40cc
- **Recommended Working Pressure:** 15-50 psi (compressor not included)
- **Air Hose Length:** 1.8 meters (approx. 6 feet)
- **Air Hose Interface:** Universal 1/8 inch
- **Product Dimensions:** 7.09 x 1.97 x 9.45 inches
- **Item Weight:** 1.36 pounds
- **Manufacturer:** XDOVET

8. WARRANTY AND SUPPORT

XDOVET is committed to providing excellent service. If you encounter any issues or have questions regarding your airbrush kit, please do not hesitate to contact us. We are dedicated to assisting you and ensuring your satisfaction.

For further assistance, please refer to the contact information provided with your purchase or visit the official XDOVET store online.