

Idatalink KIT-MUS2

iDatalink Maestro KIT-MUS2 Radio Installation Dash Kit

Instruction Manual for Ford Mustang (2015-2023)

1. INTRODUCTION

The iDatalink Maestro KIT-MUS2 is a comprehensive dash and wiring kit designed to facilitate the installation of a Pioneer modular receiver in specific 2015-2023 Ford Mustang models that originally came equipped with a 4.2" LCD screen. This kit, when used in conjunction with an iDatalink Maestro RR or RR2 interface module (sold separately), enables the seamless integration of a Pioneer modular-style receiver that features an iDatalink serial port.

The kit includes a replacement dash panel with a texture and finish engineered to match your factory dash. It also provides a vehicle-specific wiring harness and interchangeable panels to accommodate Pioneer modular receivers with 7", 8", or 9" screens. This system ensures retention of various factory features, enhancing the functionality of your new audio system.



Image 1.1: Overview of iDataLink Maestro KIT-MUS2 components and a chart indicating vehicle coverage for Ford Mustang models from 2015 to 2023 with a 4.2" LCD display.

2. WHAT'S IN THE BOX

Verify that all components listed below are present in your KIT-MUS2 package:

- iDataLink Maestro KIT-MUS2 Dash and Wiring Kit owner's manual
- Monitor housing
- Trim-ring
- Trim-panel
- Front bracket
- Rear bracket
- Vehicle harness
- Antenna adapter
- USB harness
- OBDII harness
- "A"-harness
- "C"-harness
- 2 Brackets

- Cover-panel
- 6 Machine screws
- 6 Long self-tapping screws
- 12 Short self-tapping screws
- 4 Speed-clips
- 2 Washers
- Cutout template
- Quick Start Guide

3. COMPATIBILITY

3.1 Vehicle Compatibility

- **Make:** Ford
- **Model:** Mustang
- **Years:** 2015-2023
- **Factory Requirement:** Equipped with a factory 4.2" LCD screen.

3.2 Head Unit Compatibility

This kit is designed for use with specific Pioneer modular receivers that feature a 7", 8", or 9" touchscreen monitor and an iDatalink serial port. Compatible models include:

- Pioneer DMH-C2550NEX
- Pioneer DMH-C5500NEX
- Pioneer DMH-WC5700NEX
- Pioneer DMH-WC600NEX

4. REQUIRED FOR INSTALLATION

The following items are essential for a complete installation and are sold separately:

- **iDatalink Maestro RR or RR2 Interface Module:** This module is critical for retaining factory features and integrating the new receiver with your vehicle's electronics.
- **iDatalink ACC-HU-PIO1 Installation T-Harness (Pioneer):** This harness is highly recommended for direct connection to compatible Pioneer head units, simplifying the wiring process. If this T-Harness is not used, the 20-pin black connector from the KIT-MUS2 harness must be removed, and individual wires spliced directly to the aftermarket radio's corresponding wires.

5. SETUP AND INSTALLATION

This section outlines the general steps for installing the iDatalink Maestro KIT-MUS2. Refer to the detailed owner's manual included with your kit and the Maestro RR/RR2 module for specific wiring diagrams and programming instructions.

5.1 Pre-Installation Steps

1. **Disconnect Battery:** Always disconnect the vehicle's negative battery terminal before beginning any electrical work.
2. **Remove Factory Components:** Carefully remove the factory radio and dash panel from your Ford Mustang. Consult your vehicle's service manual for specific removal procedures.
3. **Prepare Maestro Module:** Program your iDataLink Maestro RR or RR2 module using the Weblink Updater tool on a computer, following the instructions provided with the module.

5.2 Kit Assembly and Wiring

1. **Assemble Dash Kit:** Attach the appropriate interchangeable panel (7", 8", or 9") to the KIT-MUS2 dash panel to match your Pioneer modular receiver's screen size. Use the provided screws and brackets.
2. **Connect Wiring Harnesses:** Connect the vehicle-specific wiring harness from the KIT-MUS2 to your vehicle's factory wiring.
3. **Integrate Maestro Module:** Connect the iDataLink Maestro RR or RR2 module to the KIT-MUS2 harness and the Pioneer receiver's iDataLink serial port.
4. **Head Unit Connection:** If using the ACC-HU-PIO1 adapter harness, connect it between the KIT-MUS2 harness and your Pioneer receiver. If not, carefully splice the KIT-MUS2 harness wires to the corresponding wires on your Pioneer receiver's harness.
5. **Auxiliary Connections:** Connect the antenna adapter, USB harness, and OBDII harness as instructed in the detailed manual. Ensure all navigation outputs (parking brake, reverse, and VSS [Vehicle Speed Sense]) are correctly wired to the Pioneer receiver if it has navigation capabilities.



Image 5.1: The iDatalink Maestro KIT-MUS2 dash kit configured for a 7-inch Pioneer modular receiver.



Image 5.2: The iDatalink Maestro KIT-MUS2 dash kit configured for an 8-inch Pioneer modular receiver.

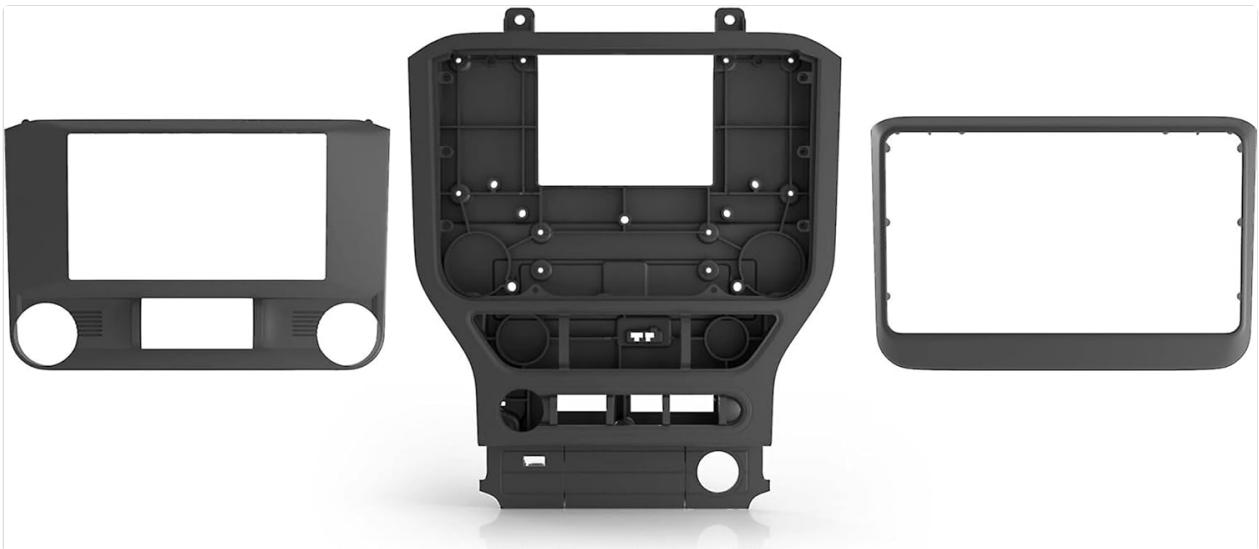


Image 5.3: The iDatalink Maestro KIT-MUS2 dash kit configured for a 9-inch Pioneer modular receiver.

5.3 Post-Installation

1. **Reconnect Battery:** Reconnect the vehicle's negative battery terminal.
2. **Test Functionality:** Before fully reassembling the dash, test all functions of the new Pioneer receiver and verify that all retained factory features are working correctly.
3. **Final Assembly:** Secure the new dash panel and receiver into place.

6. OPERATING FEATURES

The iDatalink Maestro KIT-MUS2, in conjunction with the Maestro RR/RR2 module and a compatible Pioneer receiver, allows for the retention and enhancement of various vehicle features:

6.1 Retained Factory Features

- **Factory Amplifier:** Retains the factory premium audio amplifier (including Sony & THX systems) with turn-on, fader, gain adjustment, DSP settings, and speed-compensated volume.
- **Steering Wheel Controls:** Factory steering wheel controls are retained, offering two function buttons and expandable radio functions.
- **Vehicle Settings:** Access and modify factory vehicle settings directly through the compatible aftermarket head unit's touchscreen.
- **Secondary Vehicle Display:** The secondary vehicle display (if factory equipped) is retained, showing audio and hands-free information.
- **Advanced Camera Features:**
 - Factory backup camera is retained with dynamic parking guidelines and park assist chimes (a chime speaker is included). The aftermarket head unit must have a composite video rearview camera input.
 - The factory 360 camera feature is also retained (if factory equipped).
 - If an aftermarket front camera (sold separately) is added to an iDatalink compatible head unit with multiple camera inputs, the vehicle's factory auto camera switching feature is retained.
- **USB Port Retention:** The included USB retention harness allows you to retain the vehicle's factory USB port. For Apple CarPlay and Android Auto operation, the new car stereo should have a high-amperage charging port (1.5A or greater).
- **RAP & Warning Chimes:** The vehicle's Retained Accessory Power (RAP) and Warning Chimes are

retained.

6.2 Extra Features

The system also provides additional vehicle information and performance monitoring capabilities:

- **Vehicle Info:** Displays Tire Pressure, Battery Voltage, allows reading/resetting Engine Codes, and shows Door Open Status with warnings.
- **Gauges:** Provides selectable Performance Gauges and "Track Pack" Gauges, along with the ability to read/reset Check Engine Codes.



Image 6.1: An installed Pioneer modular receiver displaying vehicle information, including tire pressure, within the Ford Mustang dashboard.



Image 6.2: An installed Pioneer modular receiver displaying various performance gauges within the Ford Mustang dashboard.



Image 6.3: An installed Pioneer modular receiver displaying the radio interface within the Ford Mustang dashboard.

7. MAINTENANCE

The iDataLink Maestro KIT-MUS2 is designed for durability and requires minimal maintenance. Follow these general guidelines:

- **Cleaning:** Use a soft, dry cloth to clean the dash panel. Avoid abrasive cleaners or solvents that could damage the finish.
- **Connections:** Periodically check all wiring connections to ensure they remain secure, especially after significant vehicle vibrations or impacts.
- **Firmware:** Ensure your iDataLink Maestro RR/RR2 module has the latest firmware by visiting the iDataLink website and using the Weblink Updater tool. This can improve compatibility and performance.
- **Receiver Maintenance:** Refer to your Pioneer modular receiver's owner's manual for specific cleaning and maintenance instructions for the head unit itself.

8. TROUBLESHOOTING

If you encounter issues after installation, consider the following common troubleshooting steps:

- **No Power to Receiver:**
 - Check all power and ground connections from the KIT-MUS2 harness to the Pioneer receiver.
 - Verify vehicle fuses and the fuse on the Pioneer receiver.
 - Ensure the Maestro RR/RR2 module is properly connected and programmed.
- **No Sound:**
 - Confirm that the factory amplifier is turning on. Check connections to the amplifier.
 - Verify speaker wiring from the KIT-MUS2 harness to the Pioneer receiver.
 - Check audio settings on the Pioneer receiver.

- **Factory Features Not Retained (e.g., Steering Wheel Controls, Camera):**

- Ensure the Maestro RR/RR2 module is correctly programmed for your specific vehicle and Pioneer receiver model.
- Verify all data connections between the KIT-MUS2, Maestro module, and Pioneer receiver.
- Check the settings on your Pioneer receiver to enable or configure retained features.

- **Display Issues:**

- Ensure the video cable for the backup camera (if applicable) is securely connected to the Pioneer receiver's composite video input.
- Check the display settings on the Pioneer receiver.

For persistent issues, consult the detailed troubleshooting guide in the iDatalink Maestro RR/RR2 module manual or contact iDatalink technical support.

9. SPECIFICATIONS

- **Model Number:** KIT-MUS2
- **Item Weight:** Approximately 2.99 pounds
- **Product Dimensions:** Approximately 14 x 8 x 18 inches (packaging dimensions)
- **Vehicle Compatibility:** Ford Mustang 2015-2023 (with factory 4.2" LCD)
- **Head Unit Compatibility:** Pioneer modular receivers (7", 8", 9" screens) with iDatalink serial port
- **Outputs Provided:** Navigation (Parking Brake, Reverse Light, VSS), 12V/15A Accessory Power, Illumination Output

10. WARRANTY INFORMATION

The iDatalink Maestro KIT-MUS2 comes with a **1-Year Manufacturer Warranty**. This warranty covers defects in materials and workmanship under normal use. Please retain your proof of purchase for warranty claims. For specific terms and conditions, refer to the warranty documentation included with your product or visit the iDatalink official website.

11. SUPPORT

For technical assistance, installation questions, or warranty inquiries, please contact iDatalink customer support:

- **iDatalink Website:** Visit the official iDatalink website for product information, firmware updates, and support resources.
- **Contact Information:** Refer to the contact section on the iDatalink website or the owner's manual for phone numbers and email support.

Always ensure you have your product model number (KIT-MUS2) and proof of purchase available when contacting support.

