

manuals.plus /

› [HCMOBI](#) /

› [HCMOBI Bone Conduction Headphones User Manual](#)

HCMOBI S100

HCMOBI Bone Conduction Headphones User Manual

Model: S100

[Setup](#)

[Operation](#)

[Maintenance](#)

[Troubleshooting](#)

[Specifications](#)

[Warranty & Support](#)

INTRODUCTION

This user manual provides detailed instructions for the operation and maintenance of your HCMOBI Bone Conduction Headphones (Model S100). Please read this manual thoroughly before using the product to ensure proper function and longevity.



Image: HCMOBI Bone Conduction Headphones, featuring a black body with a green band, designed for open-ear wear.

SETUP

What's in the Box

- 1 x HCMOBI Bone Conduction Headphones (Model S100)
- 1 x Type-C Charge Cable
- 1 x User Manual

- 1、Open Ear Headphones
- 2、Type-C Charge Cable
- 3、User manual



Image: The product packaging displaying the headphones, a Type-C charging cable, and the user manual.

Charging the Headphones

Before first use, fully charge the headphones. Connect the provided Type-C charging cable to the charging port on the headphones and the other end to a compatible USB power source. The red LED indicator will be on during charging. Once fully charged, the LED indicator will turn blue.

A full charge takes approximately 1.5 hours and provides up to 10 hours of music playtime. A 10-minute fast charge can provide 1 hour of use.

Pairing with a Device

To pair your headphones with a Bluetooth-enabled device:

1. Ensure the headphones are powered off.
2. Press and hold the On/Off button for 3 seconds until the blue and red lights flash alternately, indicating pairing mode.
3. On your device (smartphone, tablet, PC), open "Settings" and navigate to "Bluetooth".
4. Select "S100" from the list of available devices to connect. Once connected, the blue light will stop flashing.

Video: This video demonstrates the power-on, Bluetooth pairing, music playback controls (play/pause, volume up/down, next/previous song), voice assistant activation, and Type-C charging process for the HCMOBI Bone Conduction Headphones.

OPERATION

Controls and Functions

The headphones feature intuitive controls for easy management of your audio and calls.

- **Power On/Off:** Press and hold the Power button for 3 seconds.
- **Play/Pause Music:** Click the On/Off button once.
- **Volume Up:** Click the "+" button to increase volume by 10%.
- **Volume Down:** Click the "-" button to decrease volume by 10%.
- **Next Song:** Long press the "+" button.
- **Previous Song:** Long press the "-" button.
- **Activate Voice Assistant (Siri/Google Assistant):** Double click the Power button.
- **Answer/End Call:** Click the Power button once.
- **Reject Call:** Long press the Power button.



10 HOUR BATTERY LIFE

Longer battery life ensures long-lasting use,
no worry about power outages



230mAh
Battery Capacity



10 Hours
Working Time



1.5Hr Quick
Charging

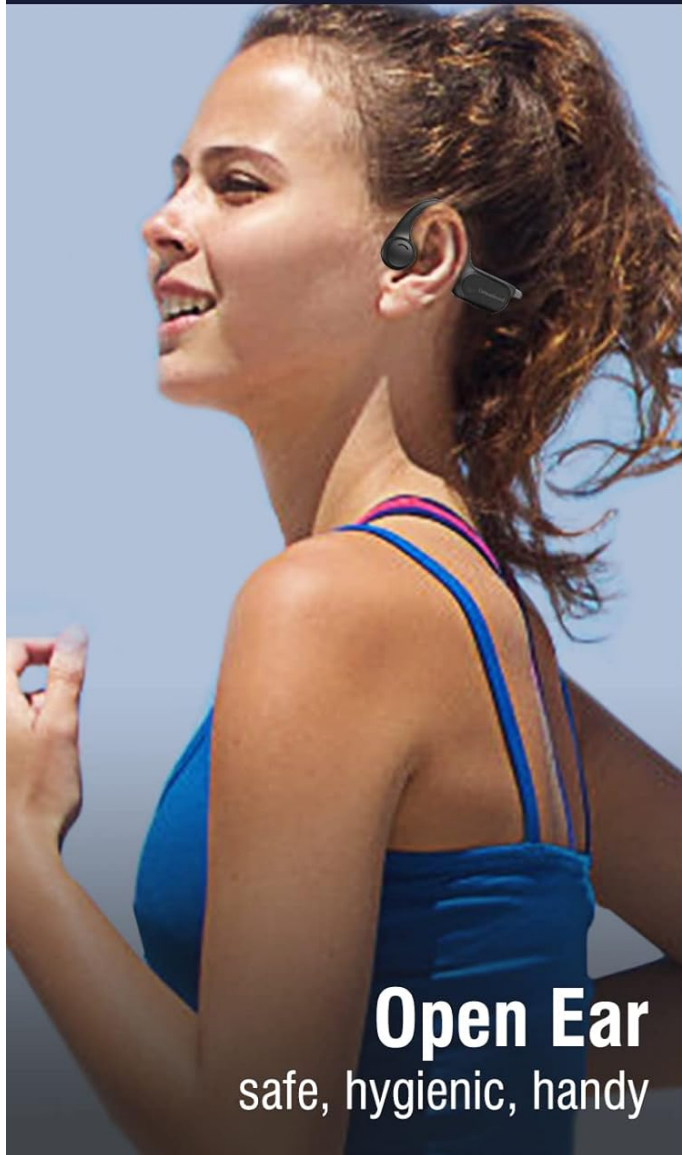
Image: A detailed diagram illustrating the location and function of each button on the headphone's control panel, including LED indicator, volume controls, power button, and Type-C charging port.

Key Features

- **Comfortable & Stable Fit:** Ergonomically designed with soft silicone material, lightweight (26g), and a flexible titanium headband for secure wear during various activities.
- **Open Ear Design & Superior Sound Quality:** Utilizes vibration-free bone conduction technology, allowing awareness of surroundings. Engineered for clear highs, soft mids, and deep bass.
- **10-Hour Battery & Fast Charge:** Built-in 230 mAh battery provides 10 hours of playtime. USB-C fast charging allows 1 hour of use from a 10-minute charge.
- **Bluetooth 5.2 & IP65 Waterproof:** Offers faster data transmission and stable signal up to 33ft. IP65 rating protects against sweat, rain, and oil, suitable for sports and outdoor use.

STABLE FIT & PAIN-FREE DESIGN

Ergonomic design for longer-lasting comfort



Open Ear

safe, hygienic, handy



Others

unsafe, itchy, inconvenient

Image: Demonstrates the comfortable and stable fit of the open-ear headphones compared to traditional in-ear headphones, highlighting the pain-free design.

Weighed only 0.9oz
lightweight & comfort



Elastic headband
Flexible, not fall off



IPX4 Waterproof
For sweat, oil and dust



DESIGNED FOR SPORTS
Open-ear Design for Comfort and Safety

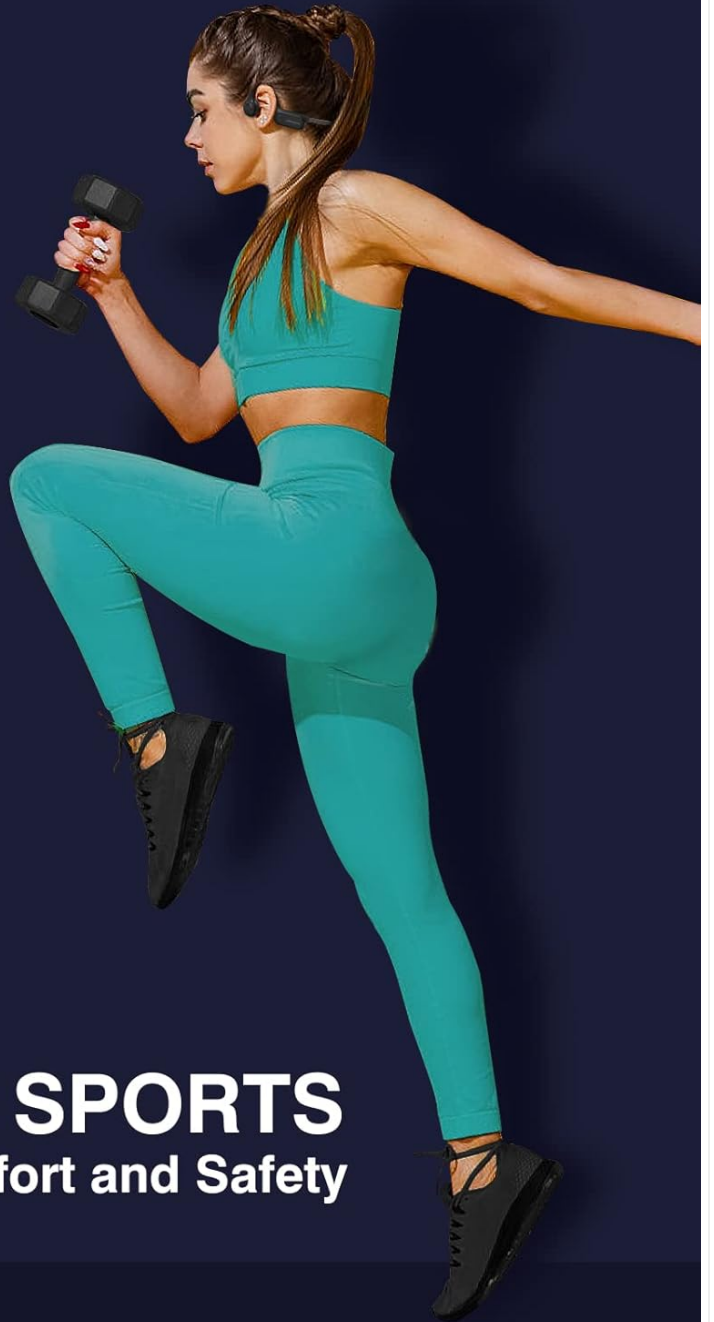
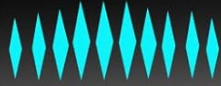


Image: Highlights the lightweight (0.9oz/26g), elastic headband, and IPX4 waterproof features, emphasizing the headphones' suitability for sports activities.

HIGH-FIDELITY STEREO BASS AND CLEAR CALLS

Upgraded vibration-free generator and noise-canceling microphone ensure high-fidelity bass and clear calls.

Hi-Res



Audio

**Noise-
canceling**



Mic

Exclusive



Vocalizer

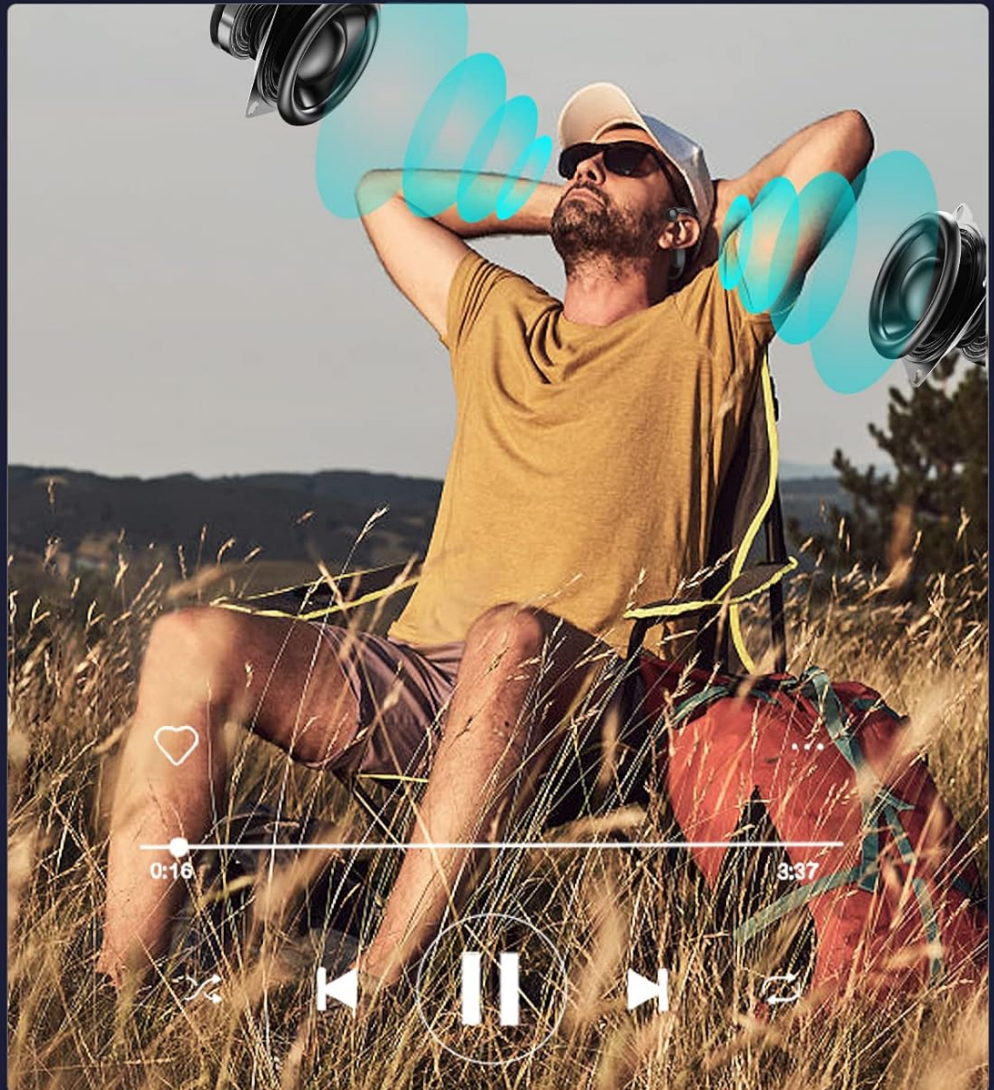


Image: Illustrates the high-fidelity audio, noise-canceling microphone, and exclusive vocalizer features, showcasing the superior sound quality for music and calls.

Bluetooth 5.2 Widely Compatible



Smart watch



iPhone



Android



Tablet



Our

VS



Other



Bluetooth

5.2

5.0



Speed (kbps)

2048 (100% ↑)

1024



Delay

<6ms

10ms-20ms



BLE

✓

X



APTX-HD

✓

X



APTX-LL

✓

X



Release Time

2020

2016

Image: Compares Bluetooth 5.2 features of the headphones with older versions, highlighting faster speed, lower delay, and compatibility with various devices like smartwatches, iPhones, Android phones, and tablets.



10 HOUR BATTERY LIFE

Longer battery life ensures long-lasting use,
no worry about power outages





230mAh
Battery Capacity



10 Hours
Working Time



1.5Hr Quick
Charging

Image: Details the 10-hour battery life, 230mAh battery capacity, and 1.5-hour quick charging feature, emphasizing long-lasting use and efficient charging.

MAINTENANCE

Cleaning

Regular cleaning helps maintain the performance and hygiene of your headphones. Use a soft, damp cloth to wipe down the surfaces. Avoid using harsh chemicals or abrasive materials. Given the IP65 waterproof rating, the headphones can withstand sweat and light rain, but should not be submerged in water.

Storage

Store the headphones in a cool, dry place away from direct sunlight and extreme temperatures. When not in use for extended periods, ensure they are fully charged before storage to preserve battery health.

TROUBLESHOOTING

If you encounter issues with your HCMOBI Bone Conduction Headphones, please refer to the following common problems and solutions:

Problem	Possible Cause	Solution
Headphones do not power on.	Low battery.	Charge the headphones fully.
Cannot pair with device.	Headphones not in pairing mode; Bluetooth off on device; device too far.	Ensure headphones are in pairing mode (flashing red/blue). Turn on Bluetooth on your device. Move headphones closer to the device (within 33ft).
No sound or low sound.	Volume too low; not connected; incorrect audio output selected on device.	Increase headphone and device volume. Re-pair the headphones. Check device's audio output settings.
Headphones automatically turn off when charging.	This is normal behavior for the device.	Headphones are designed to turn off during charging. Power them on after disconnecting from charger.
Volume resets to 100% after re-pairing.	Device specific behavior.	Adjust volume manually after each re-pairing.

SPECIFICATIONS

Feature	Detail
Brand	HCMOBI
Model Name	S100
Connectivity Technology	Bluetooth 5.2, Wireless
Wireless Communication Technology	Bluetooth
Headphones Jack	USB (Type-C)
Battery Life	10 Hours
Charging Time	1.5 Hours
Battery Capacity	230 mAh
Water Resistance Level	IP65 Waterproof
Item Weight	3.2 ounces (approx. 90g)
Material	Plastic
Ear Placement	Open Ear
Control Type	Media Control
Control Method	Touch (buttons)
Frequency Range	20 Hz - 20,000 Hz

Feature	Detail
Bluetooth Range	10 Meters (33 feet)
Manufacturer	CelsusSound
UPC	711523306424






WARRANTY AND SUPPORT

HCMOBI offers a **90-day money-back guarantee** and a **one-year warranty** for these bone conduction headphones. If you encounter any problems or have questions regarding your product, please contact our professional customer service team. We are committed to replying and solving your problem within 6 hours. For support, please refer to the contact information provided on the product packaging or the official HCMOBI website.



© 2024 HCMOBI. All rights reserved.

Related Documents - S100

	<p>S100 Smart Health Watch User Manual</p> <p>User manual for the S100 Smart Health Watch, covering appearance, charging, app pairing, main interface selection, operation methods, product parameters, main functions, app languages, and precautions. Features include TFT display, rotate key, Bluetooth calling, heart rate monitoring, and multiple sport modes.</p>
	<p>C8 Mobile Phone Quick User Guide - HCMobi</p> <p>Get started with your HCMobi C8 mobile phone. This quick user guide covers essential features, specifications, FCC compliance, and SAR information for the C8 model.</p>
	<p>Commander S100 User Guide: Variable Speed A.C. Drive for Induction Motors</p> <p>Comprehensive user guide for the Nidec Control Techniques Commander S100 Variable Speed A.C. drive. Covers installation, setup, operation, safety, and technical specifications for induction motors.</p>
	<p>Smart Sleep Mask S100 User Manual and Guide</p> <p>Comprehensive user manual for the TRANSTYLE TECHNOLOGY CO., LIMITED S100 Smart Sleep Mask, detailing features, operation, cleaning, maintenance, and safety precautions.</p>
	<p>SRAY Directional Speaker User Manual and Specifications</p> <p>Comprehensive user guide, product specifications, warranty information, and FCC compliance details for the CATCHFLOW SRAY Directional Speaker (Model CF-S100).</p>

Smart Projector



Quick Installation Guide

[Smart Projector Quick Installation Guide](#)

A quick installation guide for the Smart Projector, covering safety instructions, structure description, remote functions, projection settings, audio settings, file management, signal connection, and FCC compliance.