

## CREAMOON MLSC-0111

# CREAMOON Portable Washing Machine MLSC-0111 User Manual

Model: MLSC-0111

## 1. INTRODUCTION

Thank you for purchasing the CREAMOON Portable Washing Machine. This manual provides essential information for the safe and efficient operation, maintenance, and troubleshooting of your new appliance. Please read this manual thoroughly before first use and retain it for future reference.

This compact and foldable washing machine is designed for washing small items such as socks, underwear, baby clothes, and delicate fabrics. Its portable design makes it suitable for various environments, including apartments, dormitories, and travel.

## 2. SAFETY INSTRUCTIONS

To ensure safe operation and prevent damage, please observe the following safety precautions:

- Always connect the appliance to a grounded power outlet with the correct voltage (12 Volts).
- Do not immerse the main unit or power adapter in water or other liquids.
- Keep the appliance out of reach of children and pets. Adult supervision is required when children are near the appliance.
- Do not operate the machine if the power cord or plug is damaged. Contact customer support for assistance.
- Place the machine on a stable, level surface to prevent tipping during operation.
- Ensure the drain hose is properly positioned to prevent water leakage.
- Do not overload the machine. Refer to the capacity guidelines in the operating instructions.
- Unplug the machine from the power outlet before cleaning, maintenance, or when not in use.
- Avoid washing items with sharp objects or excessive metal parts that could damage the inner tub.

## 3. PRODUCT OVERVIEW

The CREAMOON Portable Washing Machine is designed for convenience and efficiency. It features a foldable design for easy storage and portability.

## Components:

- Main Washing Machine Unit (Foldable)
- Draining Basket
- Power Adapter

## Key Features:

- **Foldable Design:** Easily collapses for compact storage and transport.
- **8-Liter Capacity:** Suitable for small loads of laundry.
- **Three Wash Modes:** Includes 10-minute standard wash, 15-minute soft wash, and 2-minute semi-dehydration.
- **Blue Light Cleaning:** Integrated blue light for enhanced cleaning.
- **High-Power Copper Motor:** Provides efficient washing action.
- **Detachable Draining Basket:** Assists in removing excess water after washing.



Image 3.1: The CREAMOON Portable Washing Machine in its unfolded state, with the included draining basket. The machine is shown both ready for use and in its compact, folded form.

Folding mini washing machine

## Strong decontamination

For infants and young children

✓ Classified washing and care

✓ Deep cleaning

✓ Mute noise reduction



Compact folding



Image 3.2: The washing machine in operation, illustrating its deep cleaning capabilities and quiet performance. The image also shows the machine in its compact, folded state.



Image 3.3: A visual representation of the blue light cleaning function within the washing machine, indicating its active state.

## 4. SETUP

1. **Unpack:** Carefully remove all components from the packaging.
2. **Unfold:** Place the machine on a flat, stable surface. Gently press down on the top rim while pulling up the base to expand the foldable tub until it locks into place.
3. **Position:** Ensure the machine is placed near a water source and a drain. The drain hose should be positioned to allow water to flow out freely.
4. **Connect Power:** Plug the power adapter into the machine's power input, then plug the adapter into a suitable 12V grounded electrical outlet.





Image 4.1: The washing machine shown in both its compact, folded state for storage and its expanded, ready-to-use configuration.

## 5. OPERATING INSTRUCTIONS

Follow these steps for effective washing:

1. **Prepare Clothes:** Ensure clothes are suitable for machine washing. Do not overload. The 8L capacity is ideal for 1 small bath towel, 8 pieces of small clothing, 2 women's T-shirts, 6 pieces of underwear, 15 sweatshirts, 4 small toys, 8 pieces of underwear, or 12 pairs of socks.
2. **Add Water and Detergent:** Fill the tub with an appropriate amount of water and a small quantity of liquid detergent. Do not exceed the maximum fill line.
3. **Load Clothes:** Place the items to be washed into the tub.
4. **Start Machine:** Press the power button (usually located on the control panel) for 2 seconds to turn on the machine.
5. **Select Wash Mode:** Short press the power button to cycle through the available wash modes. The illuminated icon will indicate the selected mode:
  - **10 min Standard Washing:** For general cleaning.
  - **15 min Soft Wash:** For delicate items.
  - **2 min Semi-Dehydration:** For draining excess water.

6. **Washing Cycle:** The machine will automatically begin the selected cycle.
7. **Draining:** After the wash cycle, position the drain hose to empty the water. For semi-dehydration, place the draining basket inside the tub and select the 2-minute semi-dehydration mode. Note that this function removes excess water but does not fully dry clothes. Manual wringing may still be necessary.
8. **Stop Machine:** Press the power button for 2 seconds to turn off the machine.

# Intelligent three-speed timing Meeting Your Different Needs

Three gear time adjustment, selected according to the degree of washing required for clothing



Press 2 seconds to start or stop



10min standard washing



15min Soft Wash



2 minutes of semi dehydration

## How to use:

Step 1: Plug in the power supply

Step 2: Press the bottom button, and after 2 seconds, the washing machine will start

Step 3: Select the cleaning time. There are three icons from left to right. The first icon has a standard cleaning time of 10 minutes, the second icon has a gentle cleaning time of 15 minutes, and the third icon has a half dehydration time of 2 minutes (the icon is lit to indicate which cleaning mode has been selected). Short press the bottom button to change to different cleaning modes. For more details, please refer to the video explanation

Step 4: After cleaning, please press the bottom button. After 2 seconds, the washing machine will stop

Note: If you want to repeat the cleaning, you can repeat the above operation

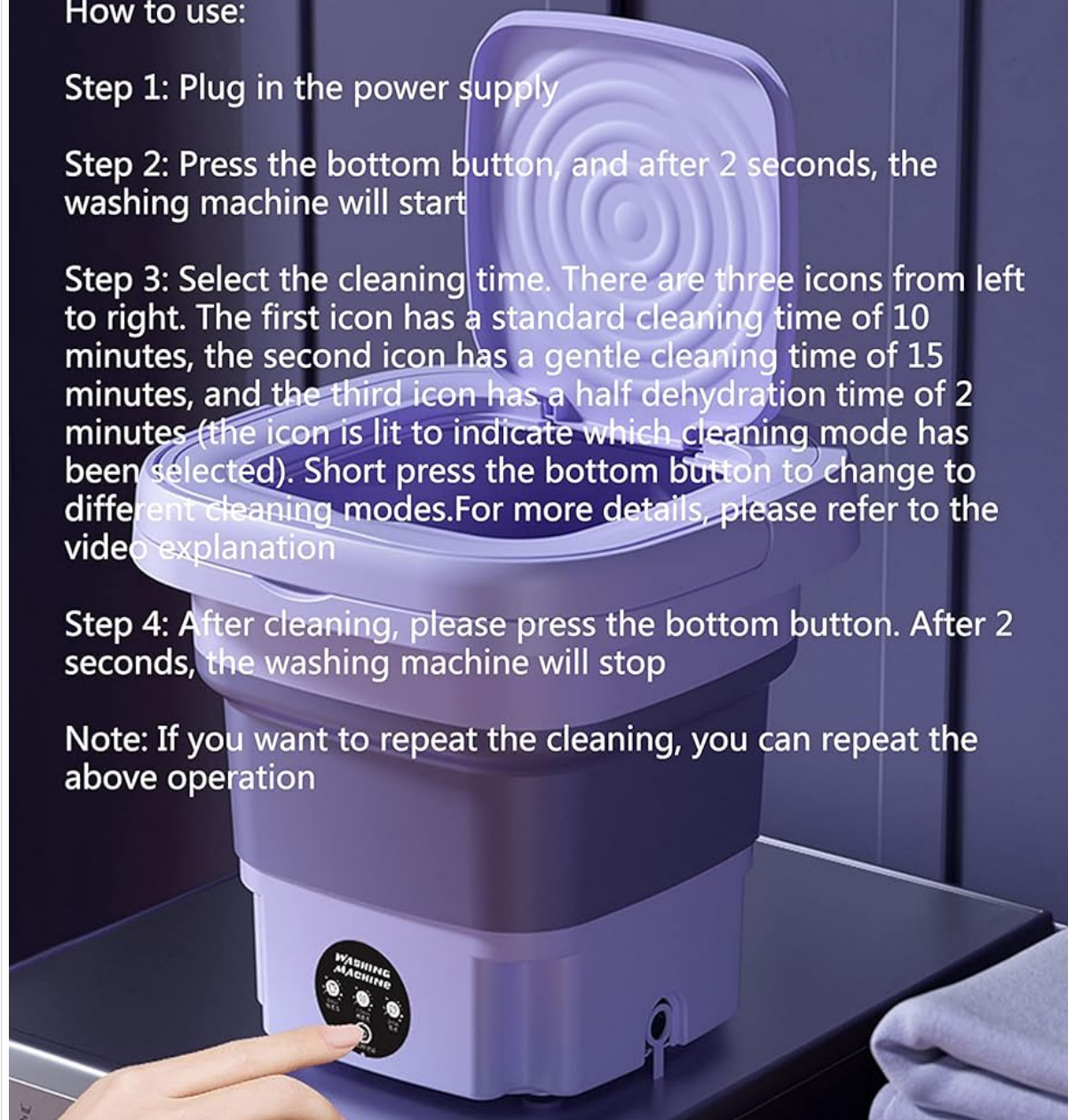


Image 5.1: The control panel illustrating the three available wash modes: 10-minute standard wash, 15-minute soft wash, and 2-minute semi-dehydration. Instructions for starting, stopping, and changing modes are also shown.

## Newly upgraded washing and leaching system

Newly upgraded detachable drainage basket, easy to operate with one click drainage



Image 5.2: A close-up view of the detachable drainage basket, designed for easy operation and water removal.

## 6. MAINTENANCE

Regular maintenance ensures the longevity and optimal performance of your washing machine.

- **Cleaning the Tub:** After each use, rinse the tub with clean water and wipe it dry with a soft cloth.
- **Draining Basket:** Clean the draining basket regularly to prevent lint and debris buildup.
- **Exterior Cleaning:** Wipe the exterior of the machine with a damp cloth. Do not use abrasive cleaners or solvents.
- **Storage:** When not in use, ensure the machine is clean and dry. Fold the machine for compact storage in a cool, dry place away from direct sunlight.
- **Power Cord:** Inspect the power cord periodically for any signs of damage.

## 7. TROUBLESHOOTING

If you encounter issues with your CREAMOON Portable Washing Machine, refer to the following common problems and solutions:

Problem	Possible Cause	Solution
---------	----------------	----------



Problem	Possible Cause	Solution
Machine does not turn on.	No power supply; Power button not pressed correctly.	Ensure the power adapter is securely plugged into both the machine and a working electrical outlet. Press and hold the power button for 2 seconds to activate.
Water is leaking from the bottom.	Drain plug not properly sealed; Drain hose improperly positioned.	Check that the drain plug is securely closed. Ensure the drain hose is correctly installed and not obstructed.
Washing action is weak or inconsistent.	Overloaded with clothes; Insufficient water level.	Reduce the amount of laundry. Add more water, ensuring it does not exceed the maximum fill line.
Semi-dehydration (spin) is ineffective.	Draining basket not properly seated; Overloaded basket; This function is for semi-dehydration, not complete drying.	Ensure the draining basket is correctly placed and not overloaded. This function is designed to remove excess water, not to fully dry clothes. Manual wringing may be required.
Machine makes unusual noise.	Unstable surface; Foreign object in tub; Overloaded.	Place the machine on a stable, level surface. Check for and remove any foreign objects. Reduce the laundry load.

If the problem persists after attempting these solutions, please contact customer support for further assistance.

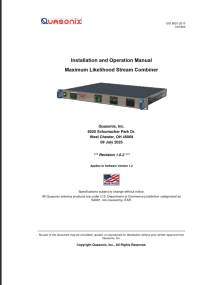
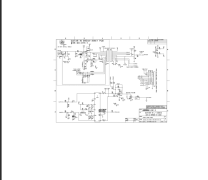
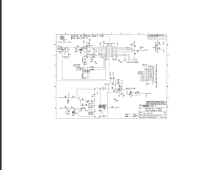


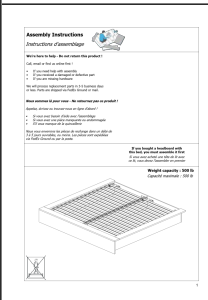
8. SPECIFICATIONS

Feature	Specification
Brand	CREAMOON
Model	MLSC-0111
Capacity	8 Liters
Product Dimensions (Expanded)	Approximately 11"D x 8"W x 5"H (Note: Dimensions may vary slightly based on expansion)
Item Weight	Approximately 1 pound (16 ounces)
Voltage	12 Volts
Material	ABS, TPE
Control Console	Touch
Special Features	Foldable, Blue Light Cleaning, Draining Basket
Included Components	Draining Basket

9. WARRANTY AND SUPPORT

For information regarding warranty coverage, returns, or technical support, please refer to the purchase documentation or contact the seller directly through the platform where the product was purchased. You may also visit the [CREAMOON Store on Amazon](#) for additional product information.

## Related Documents - MLSC-0111

	<p><a href="#">Quasonix Maximum Likelihood Stream Combiner Installation and Operation Manual</a></p> <p>This manual provides comprehensive installation and operation guidance for the Quasonix Maximum Likelihood Stream Combiner (MLSC™). Learn about its features, specifications, and how to set up and operate this advanced Best Source Selection system.</p>
	<p><a href="#">Line 6 Spider IV 3012 Guitar In / Codec Schematic</a></p> <p>Detailed schematic diagrams for the Line 6 Spider IV 3012 guitar amplifier's A21-2 main board, covering the guitar input, audio codec, digital signal processing, user interface, and peripheral connections.</p>
	<p><a href="#">Line 6 Spider IV 3012 Guitar Amplifier Service Schematics and Parts List</a></p> <p>Detailed schematics and parts list for the Line 6 Spider IV 3012 guitar amplifier, covering guitar input, codec, DSP, MCU, FBV interface, and LED matrix.</p>
	<p><a href="#">ScreenBeam 960 Wireless Display Receiver Quick Start Guide</a></p> <p>Quick start guide for installing, connecting, and configuring the ScreenBeam 960 Wireless Display Receiver. Includes setup, network connection, client device pairing, and customization instructions for Windows, iOS, and macOS.</p>
	<p><a href="#">BOWMAN Glove Box Dispensers: Single, Double, Triple, Quad Models - Product Guide</a></p> <p>Comprehensive guide to BOWMAN Glove Box Dispensers, featuring models GL100-1214 (Single), GL020-0111 (Double), GL300-1214 (Triple), and GL040-0111 (Quad). Includes detailed product descriptions, specifications, material characteristics, installation instructions, and care guidelines for Polycarbonate and PETG dispensers.</p>
	<p><a href="#">Assembly Instructions for Nexera Bed Frame</a></p> <p>Comprehensive assembly guide for a Nexera bed frame, featuring step-by-step instructions, hardware identification, safety precautions, and a 1-year limited warranty.</p>