



Manuals.plus /

› LEDIARY /

› LEDIARY 42 Inch Retractable Ceiling Fans with Lights and Remote, Fandelier Ceiling Fans with LED Lighting, Smart Modern Ceiling Fan, Stepless Color Changeable, Dimmable, Timer Setting, Black

LEDIARY Y22FSD0012-1801

LEDIARY 42 Inch Retractable Ceiling Fan with Lights - Instruction Manual

Model: Y22FSD0012-1801 | Brand: LEDIARY

INTRODUCTION

This instruction manual provides detailed information for the safe installation, operation, and maintenance of your LEDIARY 42 Inch Retractable Ceiling Fan with Lights. Please read this manual thoroughly before installation and retain it for future reference.

SAFETY INFORMATION

- Always turn off the power at the main circuit breaker before beginning installation or performing any maintenance.
- Ensure all electrical connections comply with local codes and ordinances, as well as the National Electrical Code (NEC). If you are unfamiliar with electrical wiring, consult a qualified electrician.
- The mounting structure must be capable of supporting the weight of the fan (approximately 13.64 pounds) plus the dynamic load during operation.
- Do not bend the fan blades when installing, balancing the blades, or cleaning the fan.
- Keep hands, tools, and other objects clear of the fan blades when the fan is in operation.
- This fan is designed for indoor use only and is not water resistant.

PACKAGE CONTENTS

Verify that all components are present and undamaged before proceeding with installation:

- Ceiling Fan Unit with Integrated LED Light
- Remote Control
- Downrods (5-inch and 10-inch options)
- Mounting Bracket and Hardware
- Instruction Manual

SETUP AND INSTALLATION

Proper installation is crucial for the safe and efficient operation of your ceiling fan. It is recommended to have a qualified electrician perform the installation if you are not experienced with electrical wiring.

1. Preparing for Installation

1. Turn off power at the circuit breaker.
2. Remove existing light fixture or ceiling fan.
3. Ensure the electrical box is securely mounted and capable of supporting the fan's weight.

2. Choosing the Downrod

The fan comes with two downrod options: a 5-inch short downrod and a 10-inch long downrod. Select the appropriate length based on your ceiling height and desired fan placement.



Image: Fan dimensions with two downrod options (5" and 10"). The fan measures 42 inches in diameter when blades are extended, with a 18.9-inch body diameter and 3.2-inch height. Total height with 5-inch downrod is 15 inches, and with 10-inch downrod is 19.7 inches. Suitable for rooms 100-144 sqft.

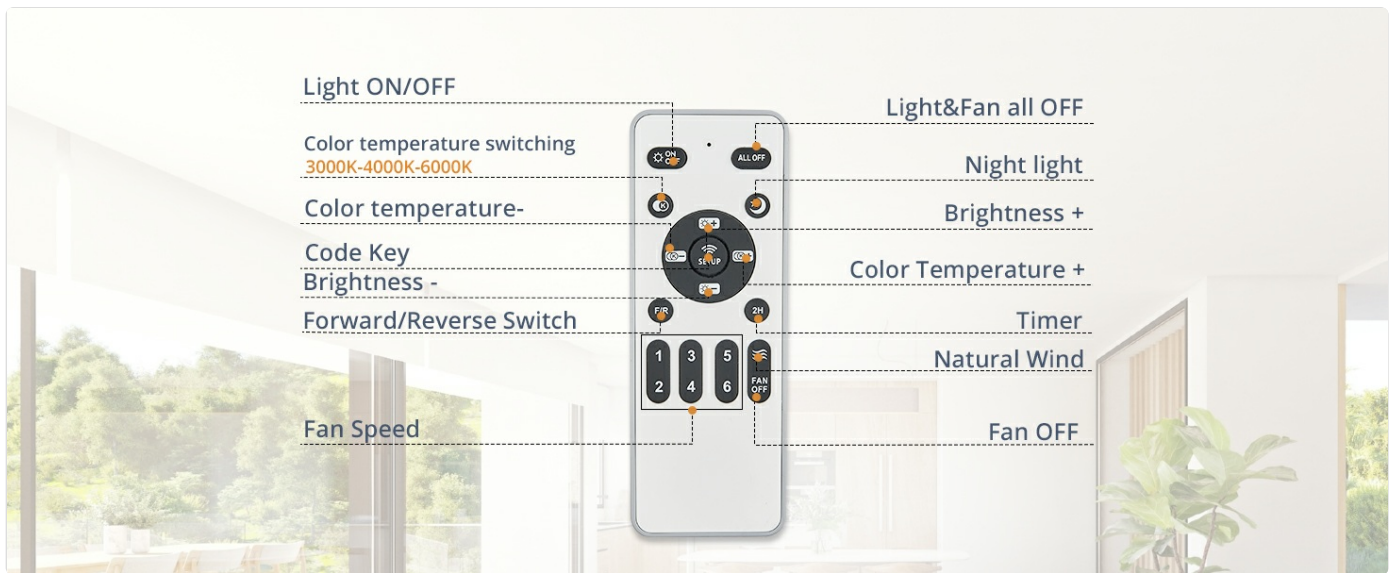


Image: Visual comparison of the fan installed with a 5-inch downrod and a 10-inch downrod. Also illustrates the fan's adaptability for both flat ceilings and sloped ceilings (up to 15 degrees).

3. Mounting the Fan

1. Attach the mounting bracket to the ceiling electrical box.
2. Feed the electrical wires through the downrod and canopy.
3. Secure the downrod to the fan motor assembly.
4. Lift the fan assembly and hang it on the mounting bracket.
5. Connect the electrical wires (live, neutral, ground) according to the wiring diagram provided in the full manual. Ensure all connections are secure.
6. Carefully tuck the wires into the electrical box and secure the canopy to the mounting bracket.

Note: Some users have found the installation process to be intricate. Pay close attention to the wiring of the receiver before securing the mounting bracket to allow for more room. Ensure the mounting bracket is not fully tightened until the receiver is properly inserted.

Retractable Ceiling Fan

Fan OFF



Secure Top-Sucking Disk

Fan ON



3 Big Retractable
Plastic Fan Blades

Image: A detailed side view of the ceiling fan, highlighting the connection point between the downrod and the fan body, and the sleek design of the integrated light fixture.

OPERATING INSTRUCTIONS

Your LEDIARY ceiling fan is controlled by the included multi-function remote control. All settings are memorized when the fan is turned off.

Remote Control Functions



Image: A comprehensive diagram of the remote control, detailing each button's function, including light control (on/off, color temperature, brightness), fan control (on/off, 6 speeds, forward/reverse), night light, and timer settings (1H, 2H, 4H, 8H).

- **Light ON/OFF:** Toggles the LED light on or off.
- **Color Temperature Changeable:** Adjusts the light color from warm white (3000K) to cool white (4500K) to clear white (6000K).
- **Brightness Adjustable:** Dims the light from 10% to 100% brightness.
- **Fan Speed:** Select from 6 fan speeds for optimal airflow.
- **Forward/Reverse Switch:** Changes the fan's direction for summer (downward airflow) or winter (upward airflow) modes.
- **Night Light:** Activates a low-brightness setting suitable for night use.
- **Timer Setting:** Set the fan to automatically turn off after 1, 2, 4, or 8 hours.
- **All OFF:** Turns off both the fan and the light simultaneously.

Light Features

The integrated LED lighting offers versatile illumination for your space.

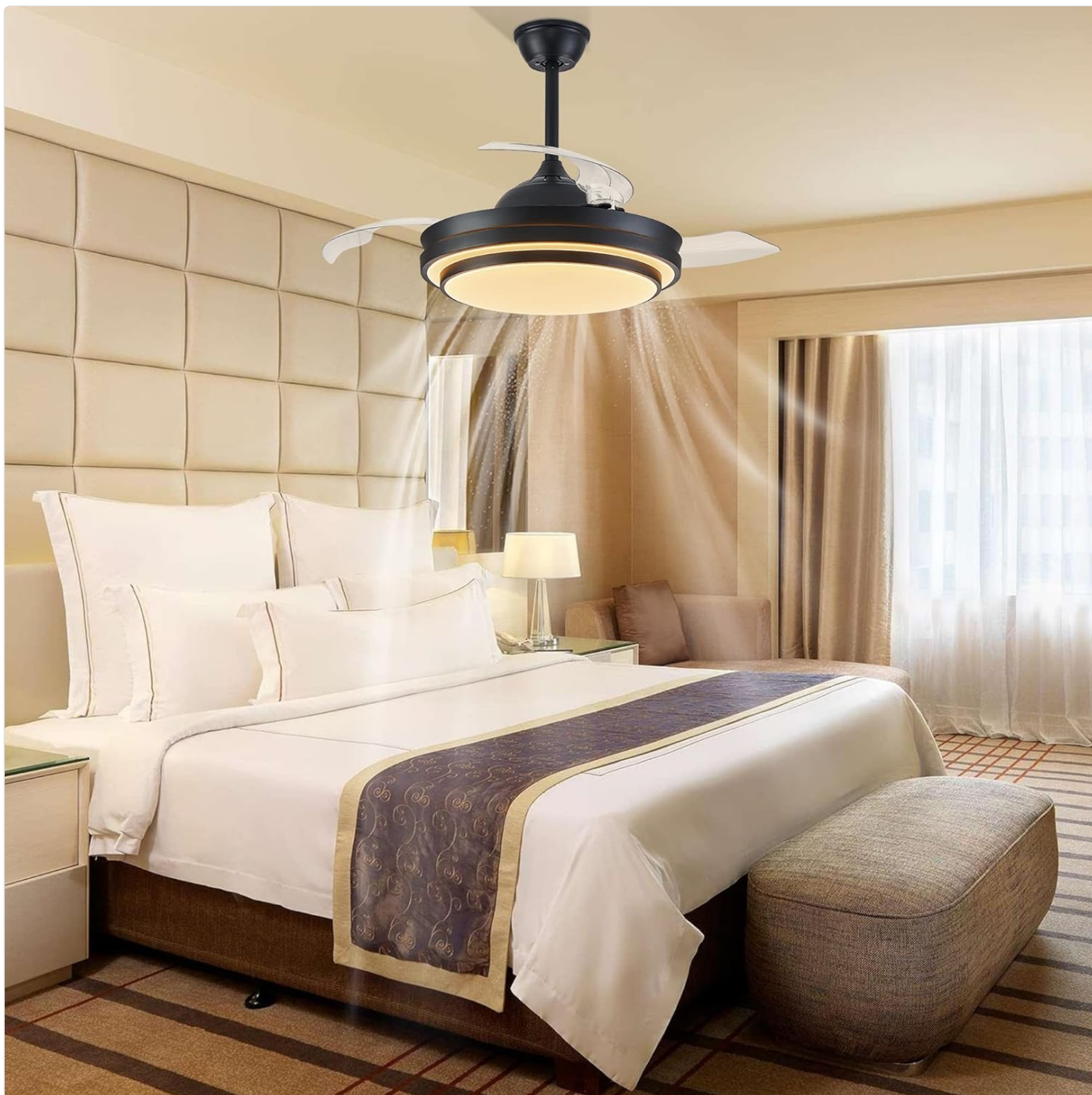


Image: Demonstrates the stepless color temperature changeability from 3000K (warm white) to 6500K (white), and dimmable brightness from 10% to 100%. The upgraded 40W LED lighting is energy-saving and gentle.

Fan Features

The fan features retractable blades and a powerful yet quiet DC motor.

Powerful & Quite



Max **220r/min**
rotation rate of
the motor



Max **30dB**
Mute Operation



Image: Shows the fan in both its "Fan OFF" state with blades retracted, appearing as a sleek light fixture, and its "Fan ON" state with the three transparent plastic blades extended for air circulation.

Cool in Summer & Warm in Winter

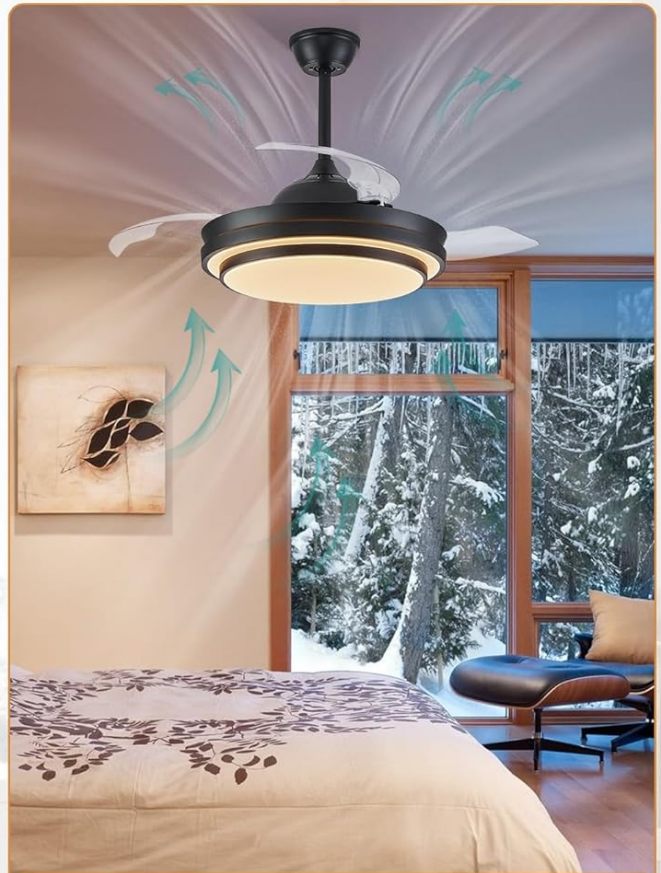
through Reversible Air Circulation



Summer Mode



Downward Airflow



Winter Mode



Upward Airflow

Image: Explains the reversible motor function, allowing for "Cool in Summer" with downward airflow and "Warm in Winter" with upward airflow, promoting air circulation and energy saving.



Image: The main product image, showcasing the installed fan with its light on, alongside its remote control and a representation of a smartphone app interface for control.

Official Product Video

Your browser does not support the video tag.

Video: This official product video from LEDIARY demonstrates the 42-inch retractable ceiling fan with lights in operation, showcasing its various features including the light settings, fan speeds, and the retraction of the blades. It provides a visual overview of the product's functionality and aesthetic.

MAINTENANCE

- **Cleaning:** To clean the fan, wipe with a soft, damp cloth. Do not use abrasive cleaners or solvents. Ensure power is off before cleaning.
- **Blade Care:** The retractable blades are made of transparent plastic. Handle them gently to avoid scratches or damage.
- **LED Light:** The fan features integrated LED lighting, which is designed for long-term use and does not require bulb replacement.

- **Connections:** Periodically check all connections and mounting hardware to ensure they remain secure.

TROUBLESHOOTING

If you encounter issues with your LEDIARY ceiling fan, please refer to the following common problems and solutions:

Problem	Possible Cause	Solution
Fan does not operate.	No power to the fan; loose wiring; remote control battery dead.	Check circuit breaker. Ensure all wire connections are secure. Replace remote control battery.
Light does not turn on or flickers.	Loose wiring; LED module issue.	Verify light wiring connections. If the issue persists, contact customer support as the LED module is integrated.
Fan makes excessive noise.	Loose mounting screws; unbalanced blades.	Tighten all mounting screws. Ensure blades are properly seated and balanced.
Remote control not working.	Battery dead; remote not paired.	Replace battery. Refer to the full manual for remote pairing instructions.

SPECIFICATIONS

Feature	Detail
Brand	LEDIARY
Model Number	Y22FSD0012-1801
Color	Black
Material	Alloy Steel, Nickel, Copper
Product Dimensions	20.8 x 20.7 x 9.7 inches (body)
Item Weight	13.64 pounds
Power Source	Corded Electric
Control Method	Remote Control
Light Source Type	LED
Color Temperature	3000K (Warm) - 6500K (White) Stepless Changeable
Brightness	10% - 100% Dimmable
Fan Speeds	6 Speeds
Motor Type	DC Motor (30W)
Mounting Type	Ceiling Mount, Semi Flush Mount
Sloped Ceiling Adaptability	Up to 15 degrees

WARRANTY AND SUPPORT

LEDIARY offers a **2-year customer support warranty** for this product. Your satisfaction is our top priority. If you encounter any

problems with your purchase, please contact us directly, and we will work with you to resolve the issue.

For technical assistance or warranty claims, please refer to the contact information provided on the product packaging or the official LEDIARY website.