

Manuals+

[Q & A](#) | [Deep Search](#) | [Upload](#)

manuals.plus /

- › [Meidase](#) /
- › [Meidase P60 Pro Trail Camera Instruction Manual](#)

Meidase P60 Pro

Meidase P60 Pro Trail Camera Instruction Manual

Model: P60 Pro

INTRODUCTION

The Meidase P60 Pro Trail Camera is designed for capturing high-quality images and videos of wildlife and for surveillance purposes in outdoor environments. This camera features 48MP still image capability, 2K video recording, 100ft clear night vision, and a rapid 0.1s trigger speed. Its robust, waterproof design ensures reliable performance in various weather conditions.

This manual provides detailed instructions for setting up, operating, and maintaining your P60 Pro Trail Camera. Please read it thoroughly before use to ensure proper functionality and longevity of your device.



Figure 1: Front view of the Meidase P60 Pro Trail Camera.

WHAT'S IN THE BOX

Upon unpacking your Meidase P60 Pro Trail Camera, please verify that all the following items are included:

- Camera x 1
- Mounting Strap x 1
- Instruction Manual x 1 (this document)
- USB Cable x 1

Note: SD card and AA batteries are not included and must be purchased separately.

SETUP GUIDE

Follow these steps to prepare your Meidase P60 Pro Trail Camera for use:

1. Remove Protective Films

Gently remove any protective films from the camera lens, PIR sensors, and the display screen to ensure clear operation.

Your browser does not support the video tag.

Video 1: Quick Start Guide for Meidase Trail Cameras, including film removal, SD card and battery installation, and motion test.

This video is provided by Meidase.

2. Insert SD Card

Open the camera housing. Locate the SD card slot and insert a standard SD card (up to 512GB, not included) with the metal contacts facing down until it clicks into place. Ensure the card is inserted correctly.



Figure 2: Inside view of the camera, showing the SD card slot and control panel.

3. Install Batteries

The camera requires 8 AA batteries. Open the battery compartment and insert the batteries, ensuring correct polarity (+/-). For optimal performance, especially in low temperatures, lithium AA batteries are recommended.

4. Power On and Format SD Card

Slide the power switch to the "ON" position. The camera display will activate. Press the "MENU" button, navigate to the "Format SD Card" option, and select "OK" to format the card. This prepares the SD card for first use and ensures compatibility.

5. Perform Motion Test

In the menu, navigate to "Motion Test" and select "OK". Close the camera door. Move in front of the camera. A red LED light will blink to indicate that motion is being captured by the sensors. This confirms the motion detection system is working correctly. Wait 1-2 minutes for motion sensors to fully activate before closing the camera.

6. Mounting the Camera

Use the provided mounting strap to secure the camera to a sturdy tree or post. The recommended installation height is 0.5 to 1 meter (approximately 1.6 to 3.3 feet) from the ground. Adjust the height based on your specific application and the target animals.



Figure 3: Meidase P60 Pro Trail Camera mounted on a tree using the provided strap.

OPERATING INSTRUCTIONS

1. Basic Operation Modes

The P60 Pro offers various modes for capturing media:

- **Photo Mode:** Captures still images. The camera supports up to 48MP resolution.
- **Video Mode:** Records video clips. The camera supports 2K (1440p) video resolution.
- **Photo + Video Mode:** Captures a still image followed by a video clip when triggered.

You can select your preferred mode through the camera's menu settings.



Figure 4: Visual comparison demonstrating the clarity of 48MP images.



Figure 5: Visual comparison demonstrating the clarity of 2K video.

2. Motion Detection and Night Vision

The camera features a rapid 0.1s trigger speed, enhanced by two additional side sensors, to capture motion effectively. Its invisible infrared LEDs and large f/1.6 aperture optical lens provide clear night vision up to 100 feet without disturbing wildlife.



Figure 6: Illustration of the camera's 0.1s rapid trigger speed.



Figure 7: Illustration of the camera's 100ft night vision range.

3. Menu Navigation

Use the control buttons (MENU, OK, directional arrows) to navigate through the camera's settings on the 2.4" color display. Adjust parameters such as date and time, video length, photo burst, and motion sensor sensitivity to suit your monitoring needs.



Figure 8: The 2.4-inch color display and control buttons for menu navigation.

MAINTENANCE

To ensure the longevity and optimal performance of your Meidase P60 Pro Trail Camera, follow these maintenance guidelines:

- **Cleaning:** Regularly clean the camera lens and PIR sensors with a soft, dry cloth to remove dirt, dust, or debris that may obstruct vision or trigger detection.
- **Battery Check:** Periodically check battery levels and replace them as needed. Low battery power can affect camera performance, especially trigger speed and night vision.
- **SD Card Management:** Format the SD card regularly (e.g., monthly or after each deployment) to prevent data corruption and ensure maximum storage efficiency. Back up important files before formatting.
- **Weather Protection:** Although the camera is waterproof (IP66 rated), ensure the housing is securely latched to prevent water ingress during heavy rain or extreme weather.

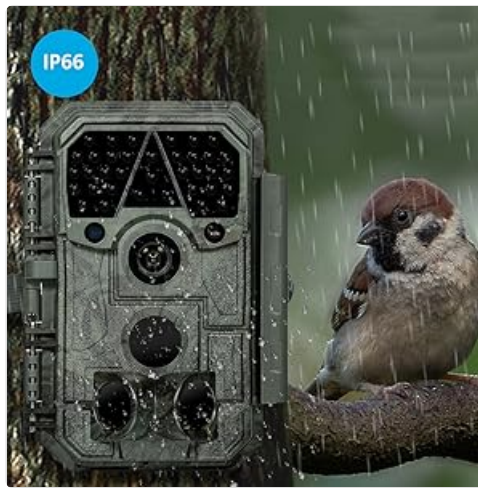


Figure 9: The camera's IP66 waterproof rating ensures durability in outdoor conditions.

TROUBLESHOOTING

If you encounter issues with your Meidase P60 Pro Trail Camera, refer to the following common problems and solutions:

Problem	Possible Cause	Solution
Camera not powering on	Low or dead batteries; incorrect battery insertion.	Replace with fresh batteries, ensuring correct polarity.
No images/videos captured	SD card not inserted, full, or corrupted; motion sensors blocked or not activated.	Ensure SD card is inserted and formatted. Check available space. Clear any obstructions from sensors. Perform a motion test.
Poor night vision quality	Low batteries; IR LEDs obstructed; camera too far from subject.	Replace batteries. Clear obstructions from IR LEDs. Ensure subject is within 100ft range.
Fogging on lens	Condensation due to temperature changes.	Ensure camera is properly sealed. Consider placing a small desiccant packet inside the housing (away from electronics) if persistent.
Display issues (e.g., lines, blank screen)	Internal hardware issue; extreme temperature exposure.	Try a soft reset by removing and reinserting batteries. If the problem persists, contact customer support.

SPECIFICATIONS

Feature

Detail

Feature	Detail
Model Number	P60 Pro
Maximum Image Resolution	48 MP
Video Capture Resolution	1440p (2K)
Video Encoding	H.264
Frame Rate	30 frames per second
Night Vision Range	100 Feet
Number of IR LEDs	36
Trigger Speed	0.1s (with side sensors)
Viewing Angle	70 Degrees
Display	2.4" Color Display
Water Resistance Level	Waterproof (IP66)
Power Source	8 AA Batteries (not included), 12V DC input
Flash Memory Type	SD, SDHC, SDXC
Max Flash Memory Supported	512 GB
Material	Acrylonitrile Butadiene Styrene (ABS)
Item Weight	1.08 pounds
Dimensions	7.2 x 4.72 x 3.39 inches
Connectivity Technology	Wired (USB)
Recommended Uses	Game & Trail, Surveillance

WARRANTY AND SUPPORT

Meidase provides a warranty for its products. For specific warranty details, including coverage period and terms, please refer to the warranty card included with your product or visit the official Meidase website. If you require technical assistance, have questions about your camera, or need to report a defect, please contact Meidase customer support directly. Contact information can typically be found on the product packaging or the official Meidase website.

For additional resources and support, you may visit the [Meidase Store on Amazon](#).

