

Kircuit Charcoal Filter

Kircuit Replacement Charcoal Filter Instruction Manual

For Whirlpool Microwave Models: WMH32519HB0-WMH32519HB5, WMH32519HT0-WMH32519HT5, WMH32519HW0-WMH32519HW5

1. INTRODUCTION

This manual provides instructions for the installation and maintenance of the Kircuit Replacement Charcoal Filter. This filter is designed to replace the original charcoal filter in compatible Whirlpool microwave models, ensuring proper air filtration and odor removal during microwave operation.

2. PRODUCT OVERVIEW

The Kircuit Replacement Charcoal Filter is a component of the microwave's ventilation system. Its primary function is to absorb odors and grease particles from the air recirculated during cooking, particularly when the microwave is used in a non-vented (recirculating) configuration. This part meets OEM manufacturing requirements and is functionally equivalent to the original part.



Image 1: The Kircuit Replacement Charcoal Filter. This image displays the rectangular filter with a metallic frame and a mesh-covered charcoal media inside, designed for odor absorption in microwave ovens.

2.1 Compatibility

This charcoal filter is compatible with the following Whirlpool microwave models:

- WMH32519HB0, WMH32519HB1, WMH32519HB2, WMH32519HB3, WMH32519HB4, WMH32519HB5
- WMH32519HT0, WMH32519HT1, WMH32519HT2, WMH32519HT3, WMH32519HT4, WMH32519HT5
- WMH32519HW0, WMH32519HW1, WMH32519HW2, WMH32519HW3, WMH32519HW4, WMH32519HW5

3. INSTALLATION (SETUP)

Before beginning installation, ensure the microwave oven is unplugged from the power outlet to prevent electrical shock. Refer to your microwave's specific user manual for detailed instructions on accessing the filter compartment, as procedures may vary slightly by model.

AIR FLOW PARTS

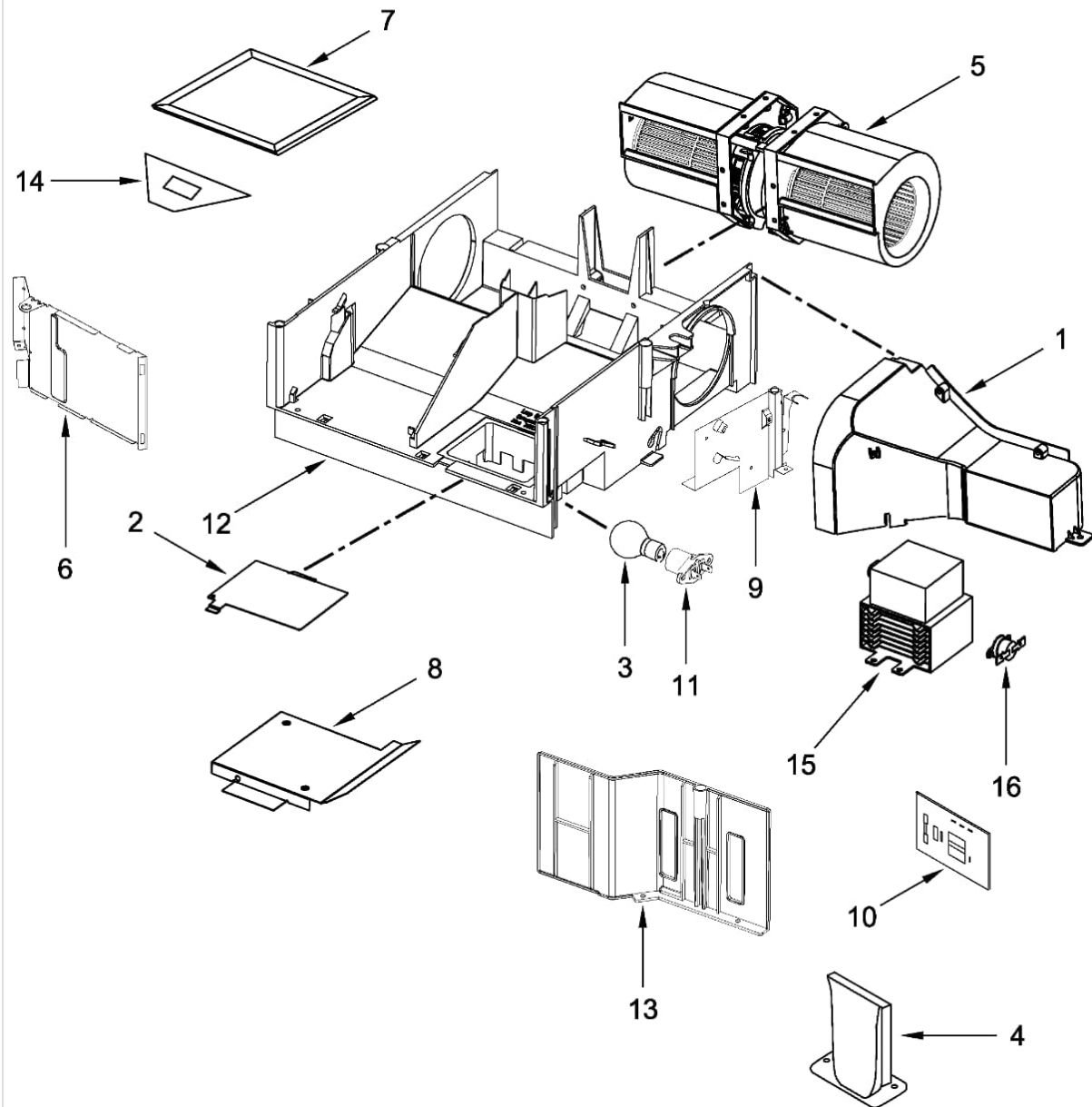


Image 2: Exploded view of microwave air flow parts. This diagram illustrates various components of a microwave's ventilation system. The charcoal filter is identified as item number 7, typically located near the exhaust vent.

3.1 General Installation Steps

1. **Disconnect Power:** Unplug the microwave oven from the electrical outlet.
2. **Locate Filter Compartment:** The charcoal filter is typically located behind the vent grille, which is usually found at the top front of the microwave oven. Some models may require removing screws or tabs to release the grille.
3. **Remove Old Filter:** Carefully remove the old charcoal filter. Note its orientation for correct installation of the new filter.
4. **Install New Filter:** Insert the new Kircuit charcoal filter into the compartment, ensuring it is seated correctly and securely. Refer to Image 2, where the charcoal filter is indicated by item number 7.
5. **Reattach Grille:** Securely reattach the vent grille.

6. **Reconnect Power:** Plug the microwave oven back into the electrical outlet.

4. OPERATING

Once the new charcoal filter is installed, the microwave oven can be operated normally. The filter works automatically to absorb odors and grease during cooking cycles, especially when the exhaust fan is running in recirculating mode.

5. MAINTENANCE

Charcoal filters are not washable and must be replaced periodically to maintain effective odor absorption. The frequency of replacement depends on usage habits.

5.1 Replacement Schedule

- For average use, it is recommended to replace the charcoal filter every 6 to 12 months.
- If you frequently cook foods with strong odors or use the microwave extensively, more frequent replacement may be necessary.
- Signs that the filter needs replacement include persistent cooking odors, even after using the exhaust fan, or a noticeable decrease in air circulation.

6. TROUBLESHOOTING

If you experience issues related to air filtration after installing the new charcoal filter, consider the following:

- **Persistent Odors:** If cooking odors remain strong, ensure the filter is correctly installed and seated. If the filter is old, it may be saturated and require replacement.
- **Reduced Airflow:** Verify that the filter is not obstructed and that the microwave's exhaust fan is operating correctly. A clogged filter can restrict airflow.
- **Incorrect Filter Type:** Confirm that you have installed the correct charcoal filter for your specific microwave model.

If problems persist, consult your microwave oven's service manual or contact a qualified appliance technician.

7. SPECIFICATIONS

| | |
|---------------|------------------|
| Product Grade | Replacement Part |
| Unit Count | 1.0 Count |
| Manufacturer | Kircuit |
| ASIN | B0C14CTZFP |

8. WARRANTY & SUPPORT

For information regarding warranty coverage or technical support for this Kircuit replacement part, please refer to the seller's policies or contact the seller directly through your purchase platform. Keep your purchase receipt as proof of purchase.

