

manuals.plus /

- › [EMEET](#) /
- › [EMEET Luna Plus Kit Conference Speaker and Microphone User Manual](#)

EMEET Luna Plus Kit

EMEET Luna Plus Kit Conference Speaker and Microphone User Manual

Model: Luna Plus Kit

Brand: EMEET

1. PRODUCT OVERVIEW

The EMEET Luna Plus Kit is a comprehensive conference speakerphone system designed for clear and efficient communication in various meeting environments. It features an advanced microphone array, robust noise reduction, and flexible connectivity options to ensure high-quality audio for all participants.



Image: The EMEET Luna Plus Kit, showing the main speakerphone unit, the satellite microphone, and the USB dongle for wireless connection.

Key features include an 8+1 microphone array for 360° voice pickup, VoiceIA noise reduction technology, daisy-chaining capability for larger meetings, a powerful 5W speaker, and broad compatibility with leading conferencing platforms.

2. PACKAGE CONTENTS

Before setup, please verify that all items are present in the package:

- EMEET OfficeCore Luna Plus Meeting Kit (Main Speakerphone Unit)
- Satellite Microphone (Expansion Mic)
- USB Cable C-C (3ft)
- Dongle A350
- C-A Adapter
- User Manual (this document)
- Safety Guide



Image: An illustration of all components included in the EMEET Luna Plus Kit package.

3. SETUP AND CONNECTION

The EMEET Luna Plus Kit offers multiple connection methods for versatility.

3.1 Powering On

Press and hold the power button on the main speakerphone unit until the indicator lights illuminate.

3.2 Connecting the Satellite Microphone

Connect the satellite microphone to the main unit using the provided cable. This expands the voice pickup range for larger meeting spaces.

3.3 Connection Methods

Choose one of the following methods to connect the device to your computer or mobile device:

- **USB Connection:** Connect the main unit directly to your computer using the USB-C to USB-C cable. Use the C-A adapter if your computer only has USB-A ports. This is a plug-and-play connection, requiring no drivers.
- **Bluetooth Connection:**
 1. Turn on the Luna Plus Kit.
 2. Press and hold the Bluetooth button on the main unit until the Bluetooth indicator light flashes blue, indicating pairing mode.
 3. On your device (smartphone, tablet, computer), search for Bluetooth devices and select "EMEET Luna Plus Kit" to connect.
- **Dongle Connection (USB A350):**
 1. Plug the A350 USB dongle into an available USB port on your computer.
 2. Turn on the Luna Plus Kit. The device will automatically connect to the dongle, indicated by a solid blue light on the dongle. This provides a stable, low-latency wireless connection.



Image: Visual representation of the easy connection options: USB, Bluetooth 5.3, and the dedicated USB dongle.

4. OPERATING INSTRUCTIONS

4.1 Basic Controls

The main unit features intuitive buttons for common functions:

- **Power Button:** Press and hold to turn on/off.
- **Volume Up/Down:** Adjust speaker volume.
- **Mute Microphone:** Toggle microphone mute on/off. The indicator lights will change to red when muted.
- **Answer/End Call:** Manage calls when connected to a phone.
- **Bluetooth Button:** Press to enter pairing mode or disconnect.

4.2 Voice Pickup and Noise Reduction

The Luna Plus Kit utilizes an 8+1 omnidirectional microphone array to capture voices from all directions (360°). The integrated VoiceIA Algorithm actively reduces background noise such as air conditioning, keyboard clicks, and other ambient sounds, ensuring clear communication.

8+1 Mics Speakerphone 360° Voice Pick Up

Enhance your audio experience



Image: Illustration of the 8+1 microphone setup providing 360° voice pickup for enhanced audio experience in a conference setting.

VoicelA Noise Reduction

Experience clean and natural sound



Image: A visual explanation of VoicelA Noise Reduction, demonstrating how various background noises are filtered out to deliver clean and natural sound.

4.3 Daisy Chain Functionality

For larger meetings with up to 25 attendees, two Luna Plus Kits can be daisy-chained together using an EMEET Daisy-Chain cable (sold separately). This wired connection ensures stable and interference-free audio expansion.

Two Sets to Cover Up to 25 People

Connect 2x Luna Plus Kits with
EMEET Daisy Chain



* When one of the expansion mics is muted,
the rest of the devices are muted at the same time

Image: A conference room setup illustrating how two Luna Plus Kits can be connected via daisy chain to cover up to 25 people.

4.4 Speaker Performance

The integrated 5W speaker delivers clear and powerful audio, with a maximum volume of 89 dB, ensuring that all participants can hear clearly.

Compatible with All Popular Platforms



Image: A detailed view of the 5W ultra-clear speaker, highlighting its capability to provide great clarity for every attendee.

4.5 Compatibility

The EMEET Luna Plus Kit is broadly compatible with various operating systems and leading conferencing platforms, including Windows, macOS, Android, iOS, Zoom, Microsoft Teams, Skype for Business, Facetime, Webex Meetings, and GoTo Meeting.

Ultra-Clear Speaker

Great clarity for
every attendee in meeting



89dB

5W



Image: The EMEET Luna Plus Kit demonstrating its compatibility with popular meeting platforms and operating systems.

5. MAINTENANCE

To ensure the longevity and optimal performance of your EMEET Luna Plus Kit, follow these maintenance guidelines:

- **Cleaning:** Use a soft, dry cloth to wipe the surface of the device. Avoid using abrasive cleaners, solvents, or strong chemicals, as they may damage the finish or internal components.
- **Storage:** Store the device in a cool, dry place away from direct sunlight and extreme temperatures. When not in use for extended periods, ensure the device is fully charged before storage and recharge it periodically to maintain battery health.
- **Handling:** Handle the device with care. Avoid dropping it or subjecting it to strong impacts, which can damage internal circuitry.
- **Cable Management:** Keep cables neatly organized and avoid sharp bends or kinks that could damage the wiring.

6. TROUBLESHOOTING

If you encounter issues with your EMEET Luna Plus Kit, refer to the following common troubleshooting steps:

- **No Sound/Microphone Not Working:**

- Ensure the device is powered on and properly connected (USB, Bluetooth, or Dongle).
- Check the volume levels on both the Luna Plus Kit and your connected device.
- Verify that the microphone is not muted (check the mute indicator light).
- Confirm that the Luna Plus Kit is selected as the default audio input/output device in your computer's sound settings or conferencing software.
- If using Bluetooth, try disconnecting and re-pairing the device.

- **Poor Audio Quality/Echo:**

- Ensure the device is placed on a flat, stable surface and not obstructed.
- Reduce background noise in the environment.
- Update the device firmware using the eMeetLink software (see section 6.1).
- Adjust microphone gain settings via eMeetLink if voices are too quiet or distorted.

- **Bluetooth Connection Issues:**

- Ensure the Luna Plus Kit is in pairing mode (flashing blue light).
- Make sure your device's Bluetooth is enabled and within range (up to 66 feet).
- Remove "EMEET Luna Plus Kit" from your device's Bluetooth history and try pairing again.
- If using the dongle, ensure it is properly inserted and its indicator light is solid blue.

- **Daisy Chain Not Working:**

- Ensure you are using an official EMEET Daisy-Chain cable.
- Verify that both Luna Plus Kits are powered on and the cable is securely connected to the "LINK" ports on both units.

6.1 eMeetLink Software

For advanced settings, firmware updates, and fine-tuning of your Luna Plus Kit, download and install the eMeetLink software from the official EMEET website. This software allows you to customize various parameters such as microphone gain, standby time, and Bluetooth settings.

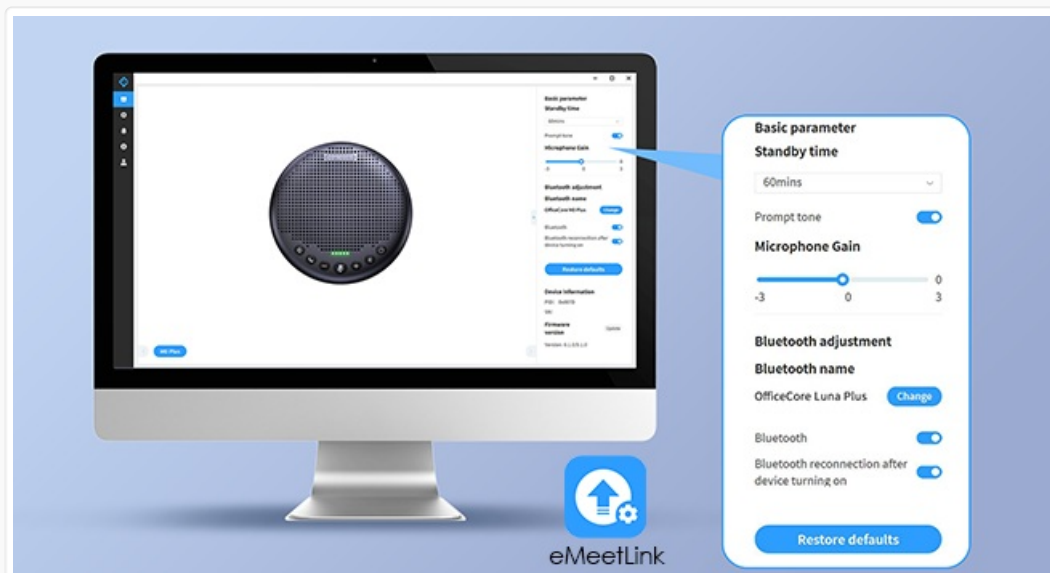


Image: The eMeetLink software interface, providing options to adjust device settings and update firmware.

7. SPECIFICATIONS

Feature	Detail
Model Name	Luna Plus Kit
Speaker Type	Satellite
Special Features	Bluetooth, Echo Cancellation, USB Port, Wireless
Compatible Devices	Keyboard, Smartphone (and various conferencing platforms)
Controller Type	Battery Powered
Surround Sound Channel Configuration	2.0
Color	Luna PLUS Kit Grey
Battery Life	10 Hours
Included Components	Battery, USB Cable
Product Dimensions	1.43"D x 5.11"W x 5.11"H
Item Weight	14.4 ounces
Is Waterproof	FALSE
Battery Capacity	2600 Milliamp Hours
Charging Time	4 Hours
Maximum Range (Bluetooth)	66 Feet
Control Method	Voice
Wireless Communication Technology	Bluetooth
Speaker Size	5.11 Inches
Power Source	Battery Powered
Signal-to-Noise Ratio	89 dB
Connectivity Protocol	Bluetooth, USB
Manufacturer	Shenzhen eMeet technology Co.,Ltd.
Connectivity Technology	Bluetooth, Daisy Chain, Dongle, USB
Audio Output Mode	Stereo
Mounting Type	Tabletop Mount

Why Choose EMEET Luna Plus Kit Conference Speaker and Microphone?



	EMEET Luna Plus Kit	Other
Model		
Meeting with	Use with Kit for 16 People Use Alone for 10 People	Up to 8 People
Mic Numbers	8+1=9 AI mics array	Only 4-6 Common Mics
Mic Sampling Rate	100-10 kHz	Just 48 kHz
Mic Functions	Advanced noise suppression, EMEET is expertise from professional audio fields	Common noise suppression
Speaker Output	5W/89dB	3W/85dB
Connection Mode	Bluetooth/USB/AUX/Dongle/DaisyChain	Bluetooth/USB
Bluetooth Version	5.3	5.0
Bluetooth Distance	20m (66ft)	10m (33ft)

Image: A detailed comparison table highlighting the superior specifications of the EMEET Luna Plus Kit.

8. WARRANTY AND SUPPORT

8.1 Warranty Information

The EMEET Luna Plus Kit comes with a **Limited Warranty**. Please refer to the official EMEET website or the included safety guide for detailed warranty terms and conditions. EMEET typically offers a 2-year exclusive warranty for its products.

8.2 Customer Support

EMEET is committed to providing excellent customer service. For technical assistance, product inquiries, or support, please contact the EMEET professional technical team. They aim to provide quick replies within 24 hours and offer lifetime professional technical support.

You can find contact information and additional resources on the official EMEET website: www.emeet.com

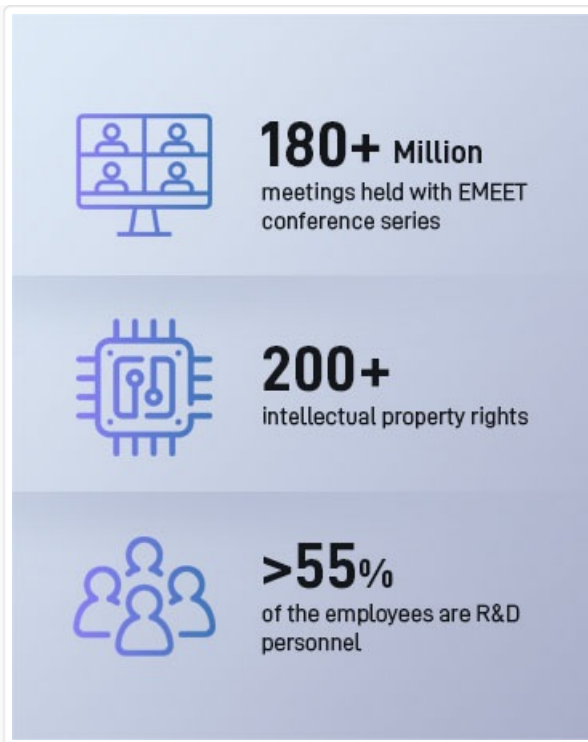
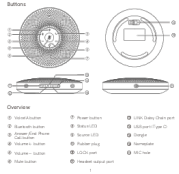
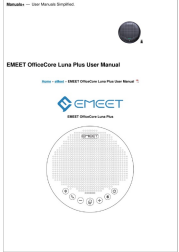


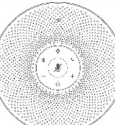



Image: EMEET's commitment to customer support, including 24-hour response, 2-year warranty, and lifetime technical assistance.

© 2025 EMEET. All rights reserved.

Related Documents - Luna Plus Kit

	<p>eMeet M2 Max Conference Speaker - User Manual and Features</p> <p>Comprehensive guide to the eMeet M2 Max conference speaker, covering its buttons, overview, power management, VoicelA and MIC mute functions, call handling, volume control, Bluetooth and USB connectivity, dongle usage, headset integration, daisy chain capability, lock port, charging, and application download.</p>
	<p>EMEET OfficeCore Luna Plus User Manual - Setup and Operation Guide</p> <p>Comprehensive user manual for the EMEET OfficeCore Luna Plus conference speakerphone, covering setup, button controls, status indicators, operating instructions, and product parameters. Learn how to connect via USB or Bluetooth, manage calls, and utilize features like AI noise reduction and Daisy Chain.</p>
	<p>EMEET Meeting Capsule Pro User Manual</p> <p>User manual for the EMEET Meeting Capsule Pro, detailing its components, setup, and usage for enhanced virtual meetings.</p>

 <p>EMEET OfficeCore Luna Plus</p> <p>Copyright © 2018 EMEET. All Rights Reserved. EMEET is a registered trademark of EMEET Technology Co., Ltd.</p>	<p>EMEET OfficeCore Luna Plus User Manual</p> <p>User manual for the EMEET OfficeCore Luna Plus, detailing its features, button controls, status indicators, connectivity options, and product specifications.</p>
 <p>EMEET OfficeCore M2 MAX</p> <p>Copyright © 2018 EMEET. All Rights Reserved. EMEET is a registered trademark of EMEET Technology Co., Ltd.</p>	<p>eMeet OfficeCore M2 MAX Portable USB/Bluetooth Speakerphone User Manual</p> <p>User manual for the eMeet OfficeCore M2 MAX portable USB/Bluetooth speakerphone, detailing its features, operation, connectivity, and technical specifications.</p>
 <p>EMEET OfficeCore M2</p> <p>Copyright © 2018 EMEET. All Rights Reserved. EMEET is a registered trademark of EMEET Technology Co., Ltd.</p>	<p>eMeet OfficeCore M2 User Manual: Smart Wireless Speakerphone</p> <p>User manual for the eMeet OfficeCore M2 smart wireless speakerphone, detailing its features, connectivity (Bluetooth, USB, AUX), and usage for clear conference calls.</p>