

## KETOTEK E0162

# KETOTEK Wireless Weather Station E0162 - Instruction Manual

Model: E0162 | Brand: KETOTEK



## 1. INTRODUCTION

Thank you for choosing the KETOTEK Wireless Weather Station. This device is designed to provide accurate indoor and outdoor temperature and humidity readings, along with a range of useful features including weather forecasts, moon phases, and an alarm clock. With its 7.5-inch VA LCD color screen and three remote outdoor sensors, it offers comprehensive environmental monitoring for your home or other locations.

## 2. PACKAGE CONTENTS

Please check the package contents to ensure all items are present:

- 1 x KETOTEK Wireless Weather Station Main Unit
- 3 x Wireless Outdoor Sensors
- 1 x Power Adapter
- 1 x User Manual (this document)

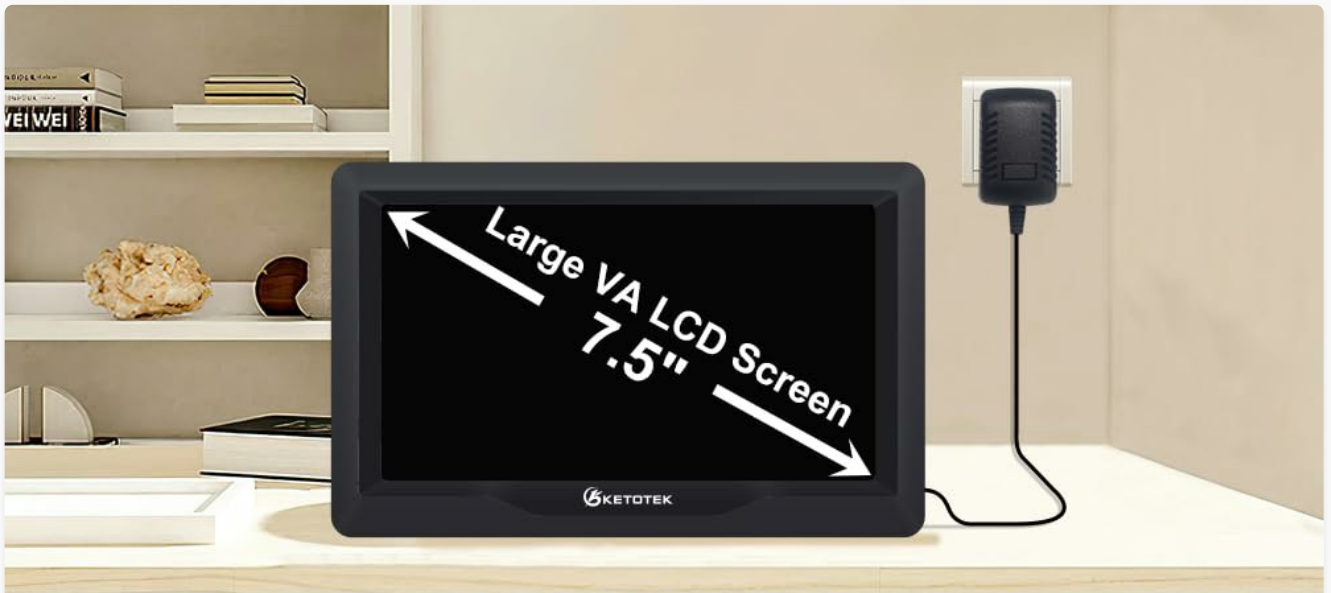


Image: KETOTEK Wireless Weather Station main unit, three outdoor sensors, and power adapter.

## 3. PRODUCT OVERVIEW

### 3.1 Main Unit

The main unit features a large 7.5-inch VA LCD color screen, providing clear and wide-angle viewing of all data. It displays indoor temperature and humidity, outdoor temperature and humidity from up to three sensors, barometric pressure, time, date, weather forecast, moon phase, and sunrise/sunset times.



①



②



③



## 5 Levels of backlight brightness / Night mode

④



OFF



Night mode

Image: The 7.5-inch VA LCD screen with adjustable backlight brightness and night mode.

### 3.2 Wireless Outdoor Sensors

The weather station comes with three wireless outdoor sensors, allowing you to monitor conditions in multiple locations such as a baby room, storage room, wine cellar, or greenhouse. These sensors transmit data up to 60 meters in an open area.

**With 3 outdoor sensor**  
60m transmission range in an open area



Image: Wireless outdoor sensors in various monitoring locations.

## 4. SETUP

### 4.1 Powering the Main Unit

The main unit can be powered by the included adapter or by batteries (not included). It also features a USB output for convenience.

- Connect the power adapter to the main unit and a power outlet.
- Alternatively, insert AA batteries into the battery compartment (located at the back of the unit).

### 4.2 Installing Sensor Batteries

Each outdoor sensor requires batteries (not included). Ensure correct polarity when inserting them.

### 4.3 Sensor Placement

For optimal performance, place outdoor sensors in locations that are protected from direct sunlight and heavy rain.

The transmission range is up to 60 meters in an open area. Consider placing sensors in areas like a garden, greenhouse, or garage to monitor specific conditions.



Image: Suggested placement locations for the weather station and sensors.

#### 4.4 Initial Synchronization and DCF Time Function

The weather station will automatically attempt to synchronize with the DCF radio signal for accurate time and date. This process may take some time. You can also manually initiate synchronization or set the time and date manually.

- Upon first power-up, the unit will search for the DCF signal.
- Once synchronized, the time, date, moon phase, and tide level will be updated automatically.
- You can select from 7 languages for the month and week display.

## DCF Radio control time function Two ways select City Function

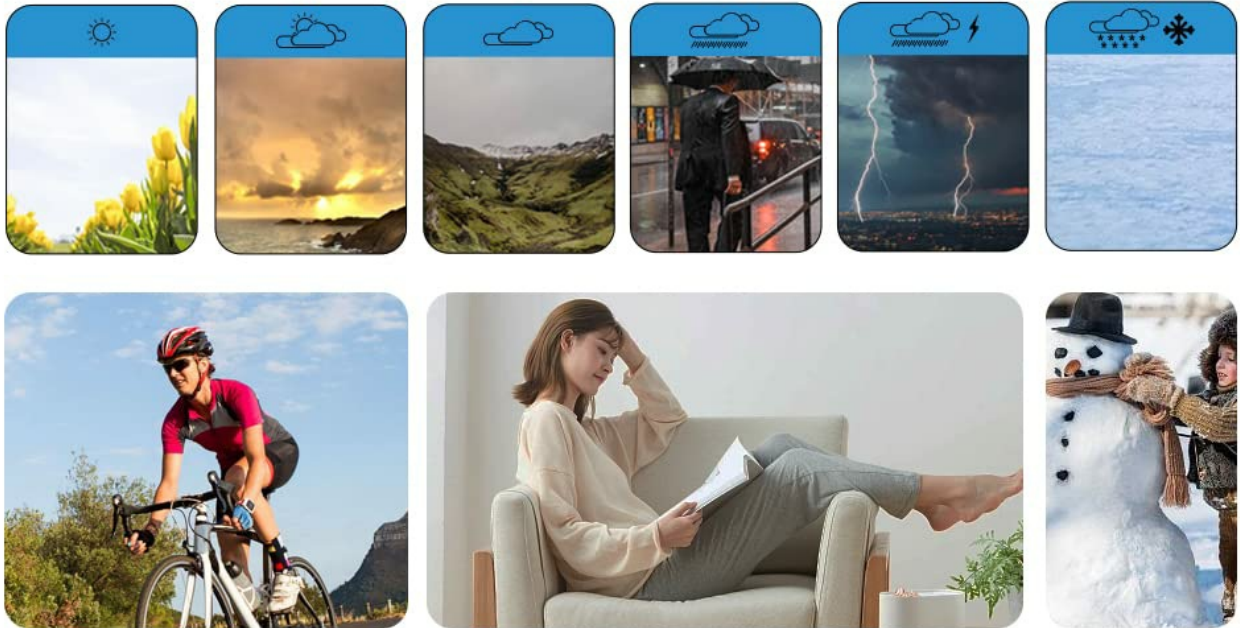


Image: DCF Radio Control Time Function and City Selection.

### 4.5 Mounting Options

The main unit can be placed on a table using its integrated stand or mounted on a wall.

## 6 Weather Forecast



## 12 Different Moon Phase

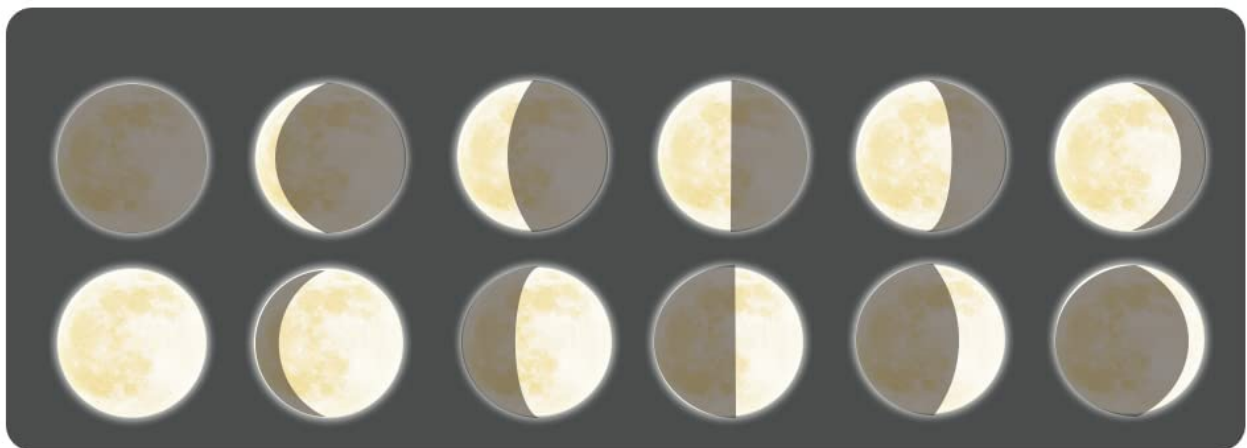


Image: Mounting options: Stand on table or mount on wall.

## 5. OPERATION

### 5.1 Display Information

The display provides a wealth of information at a glance:

- **Indoor/Outdoor Temperature & Humidity:** Current readings for both indoor and up to three outdoor locations.
- **Max/Min Records & Trends:** View historical maximum and minimum temperature/humidity, and observe trends.
- **Indoor Comfort Level:** Indication of dry, comfort, or wet conditions.
- **Barometric Pressure:** Current atmospheric pressure.
- **Weather Forecast:** 12-hour weather prediction with intuitive icons.
- **Moon Phase:** Displays the current moon phase.
- **Sunrise/Sunset Times:** Based on your selected city.

- **Time & Date:** Automatically updated via DCF signal.

## Stand on the table



## Mount on the wall

Image: Weather forecast and moon phase display.

### 5.2 Alarm and Snooze Function

The weather station includes two daily alarms with a snooze function.

- Set two independent alarms for different times.
- The snooze function allows for 5-60 minutes of extra sleep.

## 2 Daily Alarm and Snooze Function

5-60 mins snooze time

**Repeat Cycle :**

**M-F** Monday to Friday    **S-S** Saturday to Sunday

**M-F**    **S-S** Monday to Sunday



Alarm 1 8:00



Alarm 2 23:00



Image: Alarm and Snooze Function.

### 5.3 Backlight Brightness and Night Mode

Adjust the display's backlight brightness to suit your preference and environment. A dedicated night mode is available for comfortable viewing in low light conditions.

- Choose from 5 levels of backlight brightness.
- Activate night mode for a dimmed display during specific hours.

## 6. MAINTENANCE

### 6.1 Battery Replacement

The low battery indicator on the display will alert you when it's time to replace the batteries in the main unit or the outdoor sensors. Ensure to replace all batteries at the same time for consistent performance.

### 6.2 Cleaning

Wipe the weather station and sensors with a soft, dry cloth. Do not use abrasive cleaners or solvents, as they may damage the surfaces.

### 6.3 Sensor Care

While the outdoor sensors are designed for outdoor use, prolonged exposure to extreme weather conditions (e.g., heavy rain, direct intense sunlight, freezing temperatures) may affect their lifespan. Consider placing them in a sheltered location.

## 7. TROUBLESHOOTING

If you encounter issues with your KETOTEK Wireless Weather Station, please refer to the following common problems and solutions:

| Problem                         | Possible Cause   | Solution   |
|---------------------------------|--|--|
| No outdoor sensor reading       | Sensors out of range, low sensor batteries, interference.          | Move sensors closer to the main unit. Replace sensor batteries. Avoid placing near large metal objects or electronics. Re-synchronize sensors. |
| Inaccurate temperature/humidity | Sensor exposed to direct sunlight/heat source, slow stabilization. | Relocate sensor to a shaded, well-ventilated area. Allow up to an hour for readings to stabilize after relocation.                             |
| DCF time not synchronizing      | Weak signal, interference, incorrect time zone setting.            | Place the main unit near a window. Avoid electronic devices. Manually set time if automatic sync fails.  |
| Display is dim or blank         | Low main unit batteries, power adapter issue, night mode active.   | Replace main unit batteries or ensure power adapter is securely connected. Check backlight brightness settings or disable night mode.          |

## 8. SPECIFICATIONS

|                                |   |
|--------------------------------|---|
| <b>Brand</b>                   | KETOTEK   |
| <b>Model Number</b>            | E0162   |
| <b>Color</b>                   | Black   |
| <b>Material</b>                | Acrylonitrile Butadiene Styrene (ABS)                   |
| <b>Power Source</b>            | Battery powered (AA batteries required) / Power Adapter |
| <b>Connectivity Technology</b> | 433.92 MHz  |
| <b>Special Features</b>        | Large screen, Adjustable brightness                     |
| <b>Recommended Uses</b>        | Home  |

|                           |                                   |
|---------------------------|-----------------------------------|
| <b>Specific Uses</b>      | Humidity, Moon Phase, Temperature |
| <b>Package Dimensions</b> | 21.9 x 14.8 x 6.6 cm              |
| <b>Weight</b>             | 680 grams                         |
| <b>Country of Origin</b>  | China                             |

## 9. SAFETY INFORMATION

---

- Do not expose the device to extreme temperatures, direct sunlight, or high humidity.
- Avoid dropping the device or subjecting it to strong impacts.
- Do not attempt to disassemble or repair the device yourself. Refer to qualified personnel.
- Dispose of batteries responsibly according to local regulations.
- Keep out of reach of children.

## 10. WARRANTY AND SUPPORT

---

Specific warranty information is not provided in this manual. For warranty claims, technical support, or any questions regarding your KETOTEK Wireless Weather Station, please contact the seller or manufacturer directly through your purchase platform. Please have your model number (E0162) and purchase details ready when contacting support.

