

## Airdog X3 / FitAir Necklace

# Airdog X3 Air Purifier & FitAir Necklace User Manual

Model: X3 / FitAir Necklace

Brand: Airdog

## 1. INTRODUCTION

---

Thank you for choosing the Airdog X3 Air Purifier and Airdog FitAir Necklace. This comprehensive system is designed to provide you with superior air quality in your home and on the go. The Airdog X3 utilizes advanced filtration technology for large spaces, while the FitAir Necklace offers personal, portable air purification.

This manual provides detailed instructions for the safe and efficient operation, setup, and maintenance of both devices. Please read it thoroughly before use and retain it for future reference.



Image 1.1: The Airdog X3 Air Purifier (right) and Airdog FitAir Necklace (left).

## 2. SAFETY INFORMATION

Always follow basic safety precautions when using electrical appliances to reduce the risk of fire, electric shock, and injury.

- Do not operate any appliance with a damaged cord or plug.
- Do not run cord under carpeting. Do not cover cord with throw rugs, runners, or similar coverings. Arrange cord away from traffic area and where it will not be tripped over.
- Do not use outdoors or on wet surfaces.
- Unplug from outlet when not in use or before cleaning.
- Do not allow children to play with the appliance.
- Use only as described in this manual. Use only manufacturer's recommended attachments.
- Do not block air openings or place on a soft surface where openings may be blocked.
- Keep the appliance away from heat sources, direct sunlight, and moisture.

### 3. PRODUCT COMPONENTS

#### 3.1 Airdog X3 Air Purifier

The Airdog X3 features a multi-stage filtration system designed to capture various airborne pollutants.



Image 3.1: Airdog X3 Filtration System Layers.

- **Pre-filter:** Captures larger particles like dust, fibers, and hair.
- **Emitter Wires:** Electrify particles such as bacteria and germs.
- **Ionic Field:** Destroys harmful particles to prevent secondary pollution.
- **Collecting Plate:** Captures all harmful particles down to 0.0146µm.
- **Ozone Removal:** Removes unpleasant odors.

#### 3.2 Airdog FitAir Necklace

The FitAir Necklace is a compact, wearable air purifier.



Image 3.2: Airdog FitAir Necklace with charging details.

- **Main Unit:** Houses the fan and H13 HEPA filter.
- **Neckband:** Ergonomically designed for comfortable wear.
- **Silicone Tube:** Connects the main unit to a mask for direct purified air delivery.
- **H13 HEPA Filter:** Filters particles as small as  $0.3\mu\text{m}$  with 99.97% efficiency.
- **USB Charging Port:** For convenient recharging.
- **LED Indicator:** Shows battery status (Green: 8h, Yellow: 5h, Red: 0.5h remaining).

## 4. SETUP INSTRUCTIONS

### 4.1 Airdog X3 Air Purifier Setup

1. **Unpack:** Carefully remove the Airdog X3 from its packaging.
2. **Placement:** Place the air purifier on a firm, level surface. Ensure there is at least 12 inches (30 cm) of clear space around all sides for optimal airflow. Avoid placing it directly against walls or furniture.
3. **Power Connection:** Plug the power cord into a standard electrical outlet.
4. **Initial Filter Check:** Before first use, ensure all internal filter components are correctly seated and any

protective packaging has been removed.

## 4.2 Airdog FitAir Necklace Setup

1. **Charge Battery:** Before first use, fully charge the FitAir Necklace using the provided USB cable. Connect the cable to the necklace's charging port and a USB power source. The LED indicator will show charging status.
2. **Attach to Mask:** If using with a mask, connect one end of the silicone tube to the FitAir Necklace's air outlet and the other end to the mask's inlet port.
3. **Wear:** Place the necklace comfortably around your neck.

## 5. OPERATING INSTRUCTIONS

---

### 5.1 Airdog X3 Air Purifier Operation

1. **Power On/Off:** Press the power button on the top panel to turn the unit on or off.
2. **Mode Selection:** The Airdog X3 typically operates automatically, adjusting fan speed based on detected air quality. Refer to the display for current air quality readings.

### 5.2 Airdog FitAir Necklace Operation

1. **Power On/Off:** Press and hold the power button on the side of the necklace to turn it on or off.
2. **Airflow Adjustment:** The FitAir Necklace offers three airflow levels: high, medium, and low. Press the airflow adjustment button to cycle through these settings to suit your needs. The maximum airflow is 130 L/min.



## Makes Breathing Healthier

Adult Breathing Capacity

 **10-20** L/min

High Volume Air Flow

 **130** L/min

Image 5.1: The FitAir Necklace provides high volume airflow for healthier breathing.

# Create Your Own Healthy Space



Image 5.2: The FitAir Necklace creates a healthy personal space in various environments.

## 6. MAINTENANCE

### 6.1 Airdog X3 Air Purifier Maintenance

The Airdog X3 features a washable and reusable TPA filter, reducing the need for frequent filter replacements.



# Patented Lifetime Filter



## Airdog TPA Filter

Washable & Reusable  
20 Mins Quick Dry  
Eco & Cost Friendly



## HEPA Filter

Non-degradable Plastic  
Possible Secondary Pollution  
\$500 Cost Per Year

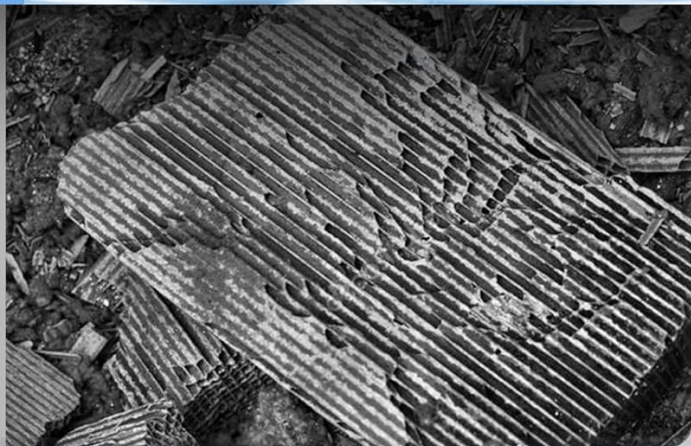


Image 6.1: The Airdog TPA filter is washable and reusable.

1. **Filter Cleaning:** When the filter cleaning indicator illuminates, or approximately every 1-2 months depending on usage and air quality, remove the collecting plate and pre-filter.
2. **Washing:** Wash the collecting plate and pre-filter with water and mild detergent. Ensure all parts are thoroughly rinsed.
3. **Drying:** Allow all components to air dry completely (approximately 20 minutes quick dry) before reinserting them into the unit. Do not use the unit with wet filters.
4. **Exterior Cleaning:** Wipe the exterior of the unit with a soft, damp cloth. Do not use abrasive cleaners or solvents.

## 6.2 Airdog FitAir Necklace Maintenance

1. **Filter Replacement:** The H13 HEPA filter in the FitAir Necklace is not washable and should be replaced periodically based on usage and air quality. Refer to the product packaging or Airdog website for replacement filter availability.
2. **Charging:** Recharge the battery when the LED indicator shows red (low battery). Use the provided USB cable for charging.
3. **Exterior Cleaning:** Wipe the exterior of the necklace with a soft, dry cloth. Avoid getting water into the internal

components.

## 7. TROUBLESHOOTING

If you encounter issues with your Airdog device, please refer to the following common solutions:

Problem	Possible Cause	Solution
Device does not turn on.	No power supply (X3) / Low battery (Necklace) / Power cord not connected.	Ensure X3 is plugged into a working outlet. Charge FitAir Necklace. Check power connections.
Reduced airflow.	Clogged filter (X3) / Dirty filter (Necklace) / Air inlets blocked.	Clean X3 filters as per maintenance. Replace FitAir Necklace filter. Ensure air inlets are clear.
Unusual noise.	Loose filter components / Obstruction in fan.	Check that all filter components are properly seated. Turn off and unplug, then check for obstructions.
LED indicator on FitAir Necklace is red.	Low battery.	Charge the FitAir Necklace immediately.

If the problem persists after attempting these solutions, please contact Airdog customer support.

## 8. TECHNICAL SPECIFICATIONS

Feature	Airdog X3 Air Purifier	Airdog FitAir Necklace
Filtration Type	TPA Technology (Washable)	True H13 HEPA Filter
Filtration Efficiency	Captures particles down to 0.0146µm	99.97% for particles as small as 0.3µm
Coverage Area	Up to 942 sq ft	Up to 25 sq ft (personal space)
Airflow Rate	Not specified in input	Max 130 L/min
Battery Life (Necklace)	N/A	Up to 8 hours (Green LED)
Charging Time (Necklace)	N/A	Approx. 6 hours
Controller Type	Button Control	Button Control

## 9. WARRANTY AND SUPPORT

Airdog products come with a manufacturer's warranty. For specific warranty terms and conditions, please refer to the warranty card included with your product or visit the official Airdog website. Keep your purchase receipt as proof of purchase.





For technical support, troubleshooting assistance, or to inquire about replacement parts, please contact Airdog customer service through their official website or the contact information provided in your product packaging.

### Online Resources:

- Airdog Official Website: [www.airdogusa.com](http://www.airdogusa.com)

- Airdog Store on Amazon: [Airdog Store](#)

## Related Documents

 <p>Airdog X3 User Manual</p>	<p><a href="#">Airdog X3 User Manual: Features, Installation, Operation, and Maintenance</a></p> <p>Comprehensive user manual for the Airdog X3 air purifier, covering purification theory, installation, operation instructions, cleaning procedures, troubleshooting, safety notices, and technical specifications. Learn how to optimize your Airdog X3 for cleaner air.</p>
 <p>Airdog X8 User Guide</p>	<p><a href="#">Airdog X8 Air Purifier User Guide</a></p> <p>Comprehensive user guide for the Airdog X8 air purifier, covering purification theory, installation, operation, maintenance, cleaning, app setup, and technical specifications. Learn how to use and care for your Airdog X8 for optimal air quality.</p>
 <p>Airdog X5 User Manual</p>	<p><a href="#">Airdog X5 User Manual: Advanced Air Purification Guide</a></p> <p>Comprehensive user manual for the Airdog X5 air purifier. Learn about its features, installation, operation, cleaning, and troubleshooting for optimal indoor air quality. Features washable filters and energy-efficient design.</p>
 <p>Airdog X8S User Manual</p>	<p><a href="#">Airdog X8S Air Purifier User Manual: Setup, Operation, Cleaning, and Troubleshooting</a></p> <p>Detailed user manual for the Airdog X8S air purifier. Covers purification theory, components, installation, operation instructions, app connectivity, maintenance, cleaning procedures for collecting plates and filters, and a comprehensive Q&amp;A section.</p>