

## Tbest Tbest6in3vkeqr8

# Tbest Hexagonal Quick Release Plate for RC0 System Tripods

MODEL: TBEST6IN3VKEQR8

Brand: Tbest

### PRODUCT OVERVIEW

The Tbest Hexagonal Quick Release Plate (Model Tbest6in3vkeqr8) is a standard accessory designed for the RC0 hexagonal quick release system. It facilitates rapid attachment and detachment of cameras and other equipment to compatible tripods and mounts. This plate is equipped with a 1/4-inch screw for secure camera attachment and is compatible with various models including 3038, 3039, 3047, 3055, 3055S, and 3063, serving as a direct replacement for the #3049 plate.

### Key Features:

- **Standard Compatibility:** Designed for the RC0 hexagonal quick release system.
- **Secure Attachment:** Features a 1/4-inch camera screw for firm connection to camera base plates.
- **Enhanced Efficiency:** Streamlines camera setup and removal processes.
- **Wide Device Compatibility:** Works with models 3038, 3039, 3047, 3055, 3055S, and 3063.
- **Direct Replacement:** Functions as a replacement for the #3049 quick release plate.

Made of high  
quality material



Lightweight and  
eco-friendly

Fashionable  
and special



*Image: Note that new and old models of the quick release plate may be shipped randomly, as shown in the comparison.  
Both types are compatible with the RC0 system.*

## SETUP INSTRUCTIONS

### 1. Attach Quick Release Plate to Camera:

Locate the 1/4-inch screw on the quick release plate. Align this screw with the tripod mounting hole on the base of your camera. Rotate the screw clockwise until the plate is securely fastened to the camera. Ensure it is tight enough to prevent rotation but do not overtighten.



*Image: Top view of the Tbest Hexagonal Quick Release Plate, showing the 1/4-inch screw and textured rubber surface for secure camera attachment.*

## **2. Attach Camera (with Plate) to Tripod/Mount:**

Ensure your tripod or mounting head is compatible with the RC0 hexagonal quick release system. Open the quick release clamp on your tripod head. Carefully insert the camera, with the attached quick release plate, into the clamp. Close the clamp securely until you hear or feel a click, indicating the plate is locked in place. Verify the camera is stable before use.



*Image: A DSLR camera securely attached to a tripod head via the Tbest Hexagonal Quick Release Plate, demonstrating proper mounting.*

## **OPERATING THE QUICK RELEASE SYSTEM**

### **Inserting the Camera:**

- Ensure the quick release lever on your tripod head is in the open position.
- Align the hexagonal quick release plate (attached to your camera) with the receiver on the tripod head.
- Gently push the plate into the receiver until it clicks into place.
- Push the quick release lever to the closed/locked position to secure the camera. Always double-check for stability.

### **Removing the Camera:**

- While holding your camera firmly, push the quick release lever on the tripod head to the open position.
- Carefully lift the camera and attached quick release plate out of the receiver.

### **Demonstration Videos:**

Your browser does not support the video tag.

*Video: A demonstration of attaching and detaching the quick release plate from a tripod head, showcasing the ease of use and secure locking mechanism.*

Your browser does not support the video tag.

*Video: Another demonstration highlighting the quick release functionality and compatibility with the 3049 system.*

## MAINTENANCE

- **Cleaning:** Wipe the quick release plate with a soft, dry cloth to remove dust and debris. Avoid using harsh chemicals or abrasive materials that could damage the finish or rubber grip.
- **Inspection:** Regularly inspect the 1/4-inch screw for any signs of wear or damage. Ensure the rubber grip pad is intact and provides sufficient friction.
- **Storage:** Store the quick release plate in a clean, dry environment when not in use to prevent corrosion or damage.

## TROUBLESHOOTING

### Plate does not fit into tripod head:

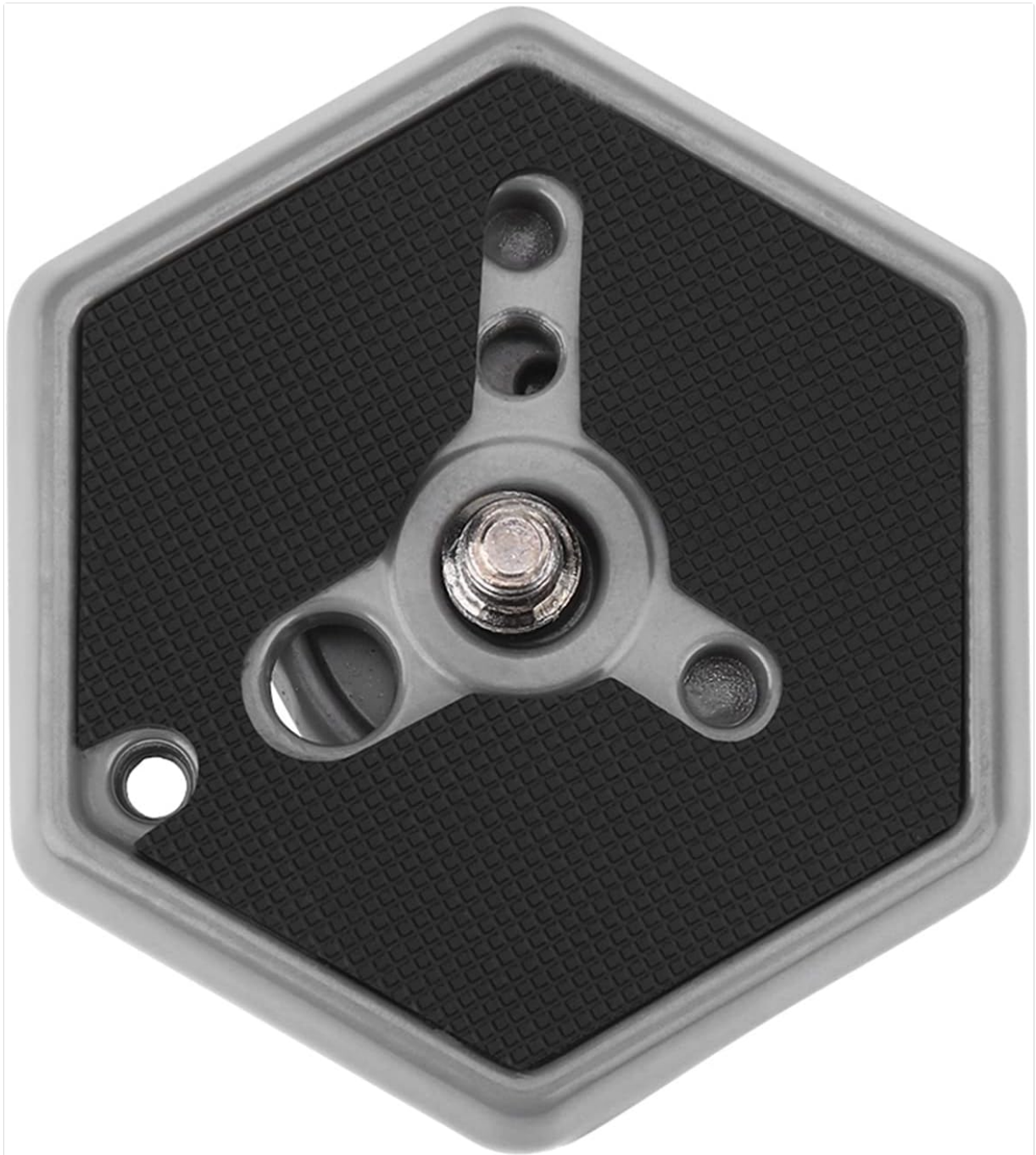
- Ensure your tripod head is compatible with the RC0 hexagonal quick release system. This plate is specifically designed for that standard.
- Check if the quick release clamp on the tripod head is fully open.
- Inspect the plate and receiver for any obstructions or damage.

### Camera feels loose after attachment:

- Tighten the 1/4-inch screw on the quick release plate to ensure it is firmly attached to your camera.
- Ensure the quick release lever on the tripod head is fully closed and locked.
- Verify that the rubber grip pad on the plate is clean and providing adequate friction.

## PRODUCT SPECIFICATIONS

<b>Brand:</b>	Tbest
<b>Model Number:</b>	Tbest6in3vkeqr8
<b>Item Weight:</b>	3.17 ounces
<b>Color:</b>	Black
<b>Compatible Devices:</b>	Cameras (with 1/4-inch tripod mount)
<b>Mounting Type:</b>	Surface Mount
<b>Special Feature:</b>	Hand Free
<b>Compatibility System:</b>	RC0 Hexagonal Quick Release System (Replaces #3049)



*Image: Diagram showing the dimensions of the Tbest Hexagonal Quick Release Plate (5cm/1.96in height, 7.5cm/2.95in width).*

## **WARRANTY AND SUPPORT**

For warranty information or technical support regarding your Tbest Hexagonal Quick Release Plate, please refer to the product packaging or contact Tbest customer service directly. Keep your purchase receipt for warranty claims.