



Manuals.plus /

- › CIARRA /
- › CIARRA CBCB6736M Inclined Cooker Hood User Manual

CIARRA CBCB6736M

CIARRA CBCB6736M Inclined Cooker Hood User Manual

Model: **CBCB6736M**

Brand: CIARRA

1. PRODUCT OVERVIEW

The CIARRA CBCB6736M is a modern, inclined cooker hood designed for efficient kitchen ventilation. It features a sleek black glass design and offers both recirculation and external ducted operation modes. Equipped with advanced features like touch control, Wi-Fi connectivity, and dimmable LED lighting, this hood provides powerful extraction while maintaining energy efficiency.



Image: The CIARRA CBCB6736M inclined cooker hood, showcasing its black glass design and an A++ energy efficiency rating sticker, with two carbon filters visible at the bottom left.

Key Features:

- **High Energy Efficiency:** Rated A++ for reduced energy consumption.
- **Powerful Extraction:** Max airflow of 650 m³/h with a Boost function for rapid fume removal.
- **Dual Operating Modes:** Supports both recirculation (with carbon filter) and external ducted ventilation.
- **Smart Control:** Intuitive touch panel and Wi-Fi connectivity for convenient operation via an app.
- **Dimmable LED Lighting:** Provides clear and comfortable illumination for your cooking area with adjustable brightness.
- **Automatic Flap:** The front panel opens and closes automatically upon activation and deactivation.



WiFi+APP Control



Power Booster



Touch Control



Max: 650m³/h



Illumination LED

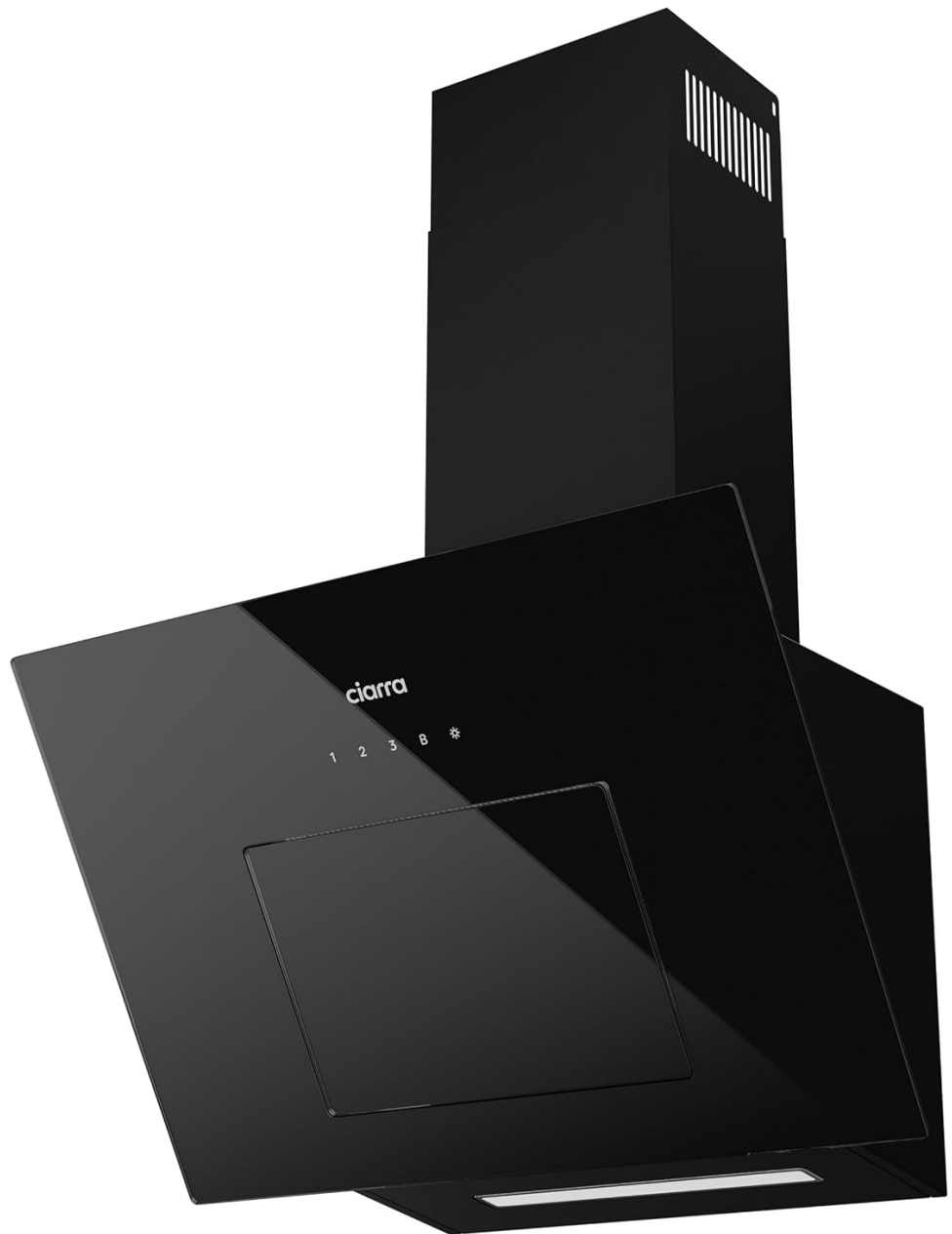


Image: A visual representation of the cooker hood's key features, including icons for WiFi+APP Control, Power Booster, Touch Control, Max 650m³/h airflow, and LED Illumination.

2. INSTALLATION AND SETUP

Proper installation is crucial for the optimal performance and safety of your cooker hood. This appliance is designed for wall mounting. Ensure you have adequate space and the necessary tools before beginning installation.

2.1 Pre-Installation Checklist

- Verify all components are present and undamaged.
- Ensure the wall structure can support the weight of the hood (approximately 11.7 kg).
- Confirm electrical supply (220 Volts) is available at the installation point.
- Decide on the operating mode:
 - *Ducted Mode*: Requires an external exhaust duct (not supplied).
 - *Recirculation Mode*: Requires carbon filters (supplied with some models, check packaging) to purify air before returning it to the kitchen.

2.2 Dimensions and Mounting

Refer to the diagram below for precise dimensions to ensure proper placement above your cooking surface. The hood should be mounted at an appropriate height above the hob as per local regulations and manufacturer recommendations.

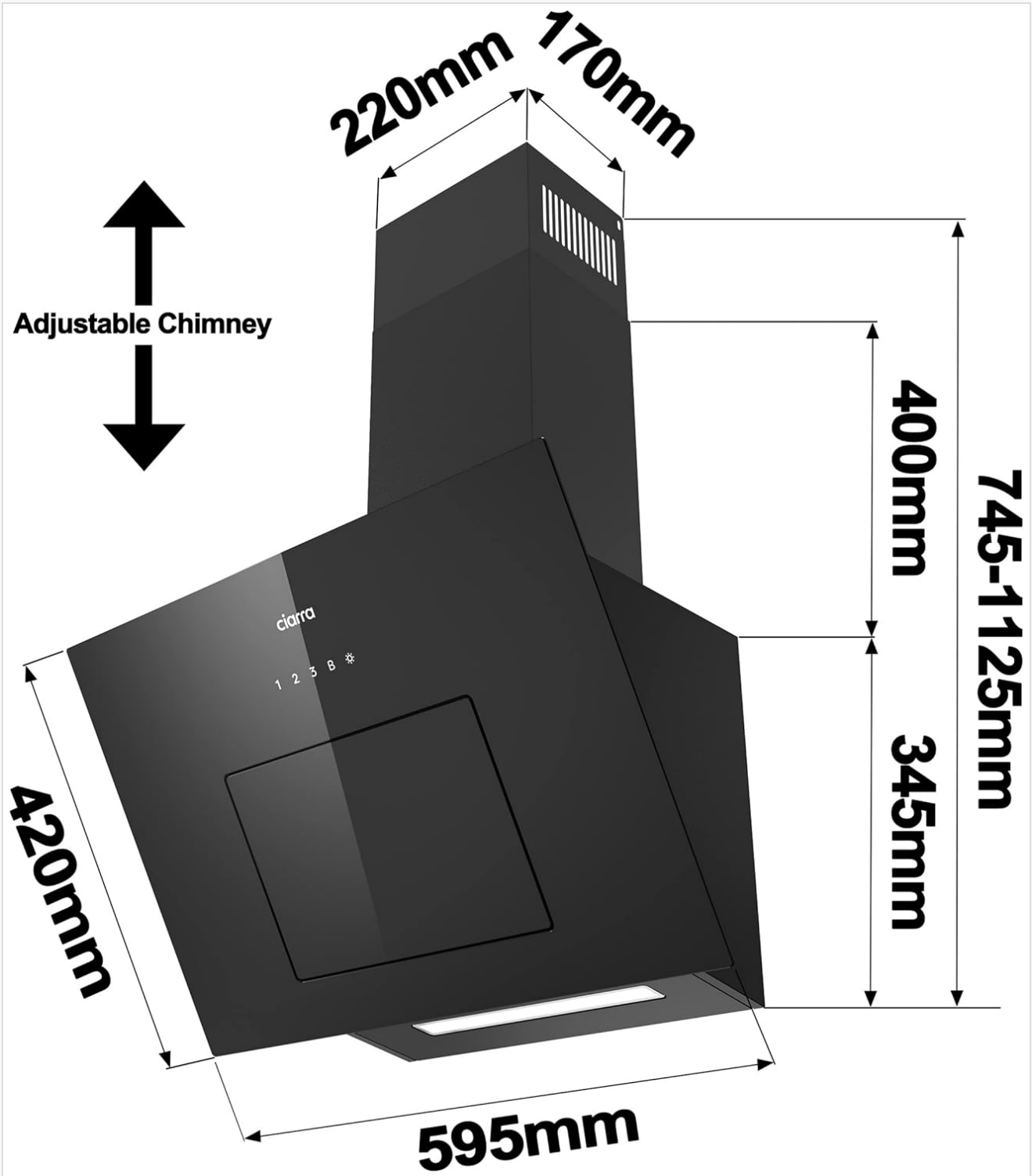


Image: A technical diagram illustrating the dimensions of the CIARRA cooker hood, including width (595mm), height (745-1125mm with adjustable chimney), and depth (420mm for the main body, 220mm x 170mm for the chimney).

The overall dimensions of the product are approximately 39.5 x 59.6 x 74.7 cm (L x W x H).



Image: The CIARRA cooker hood mounted on a kitchen wall above a hob, demonstrating its sleek integration into a modern kitchen environment.

3. OPERATING INSTRUCTIONS

Your CIARRA cooker hood offers intuitive controls for efficient ventilation and lighting.

3.1 Control Panel

The hood is operated via a touch-sensitive control panel located on the front glass surface. The panel typically includes controls for power, fan speed, boost function, and lighting.

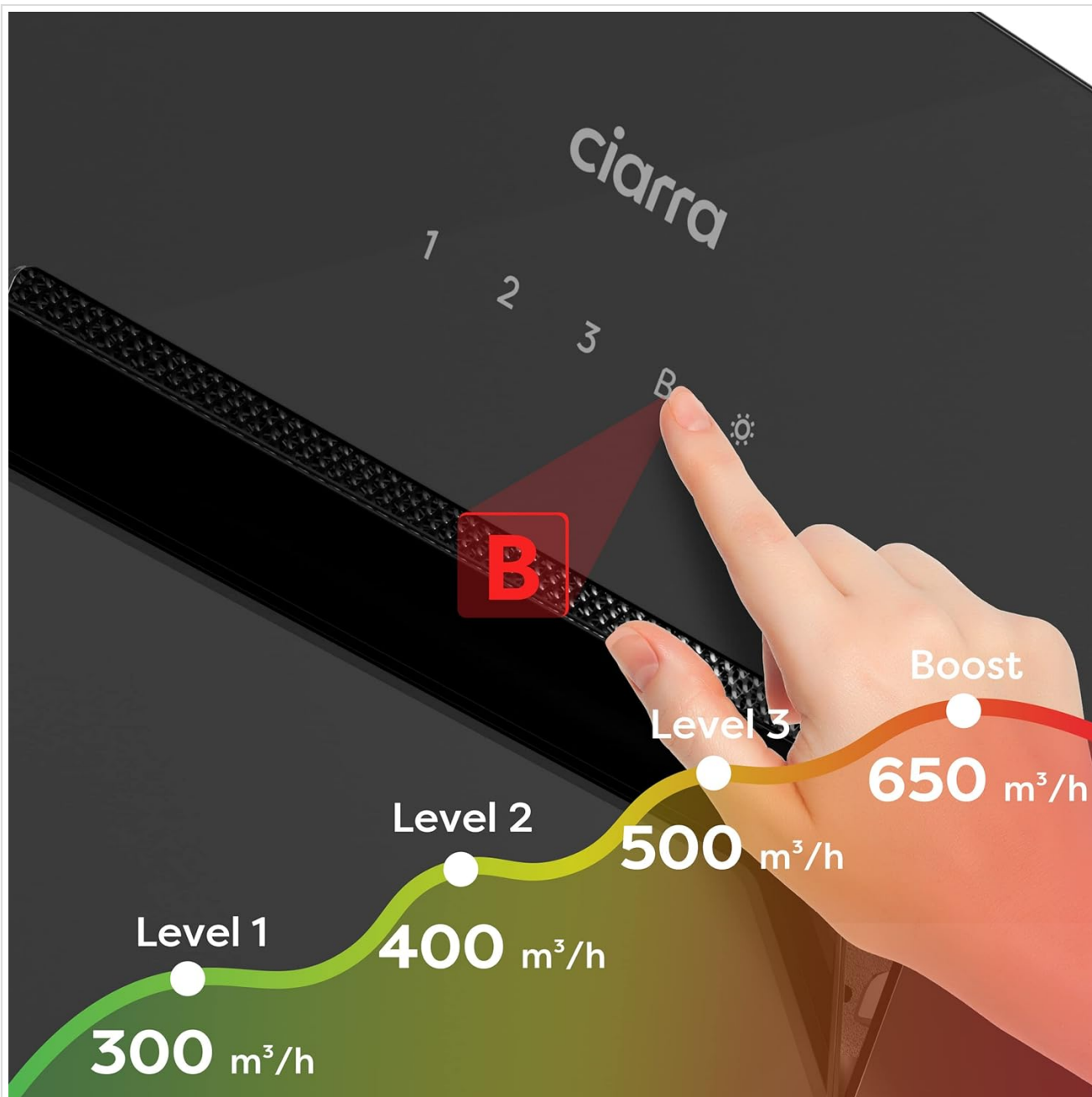


Image: A close-up of the cooker hood's touch control panel, showing numerical indicators for fan speeds (1, 2, 3) and a 'B' for Boost, with corresponding airflow rates (300 m³/h for Level 1, 400 m³/h for Level 2, 500 m³/h for Level 3, and 650 m³/h for Boost).

3.2 Fan Speed Selection

- **Speed 1:** For light cooking, simmering, or maintaining air quality.
- **Speed 2:** For moderate cooking with light to medium steam/fumes.
- **Speed 3:** For heavy cooking, frying, or when significant steam/fumes are present.
- **Boost Function:** Activates maximum extraction (650 m³/h) for a short period to quickly clear intense smoke or odors. The boost function typically deactivates automatically after a set time.



650m³/h d'Extraction Forte
Excellent aspiration et fonctionne en silence

Image: The CIARRA cooker hood actively extracting steam from a pot on a hob, illustrating its powerful 650m³/h extraction capability in a kitchen setting.

3.3 Lighting Control

The integrated LED lighting provides illumination for your cooking area. The lights are dimmable, allowing you to adjust the brightness to your preference.

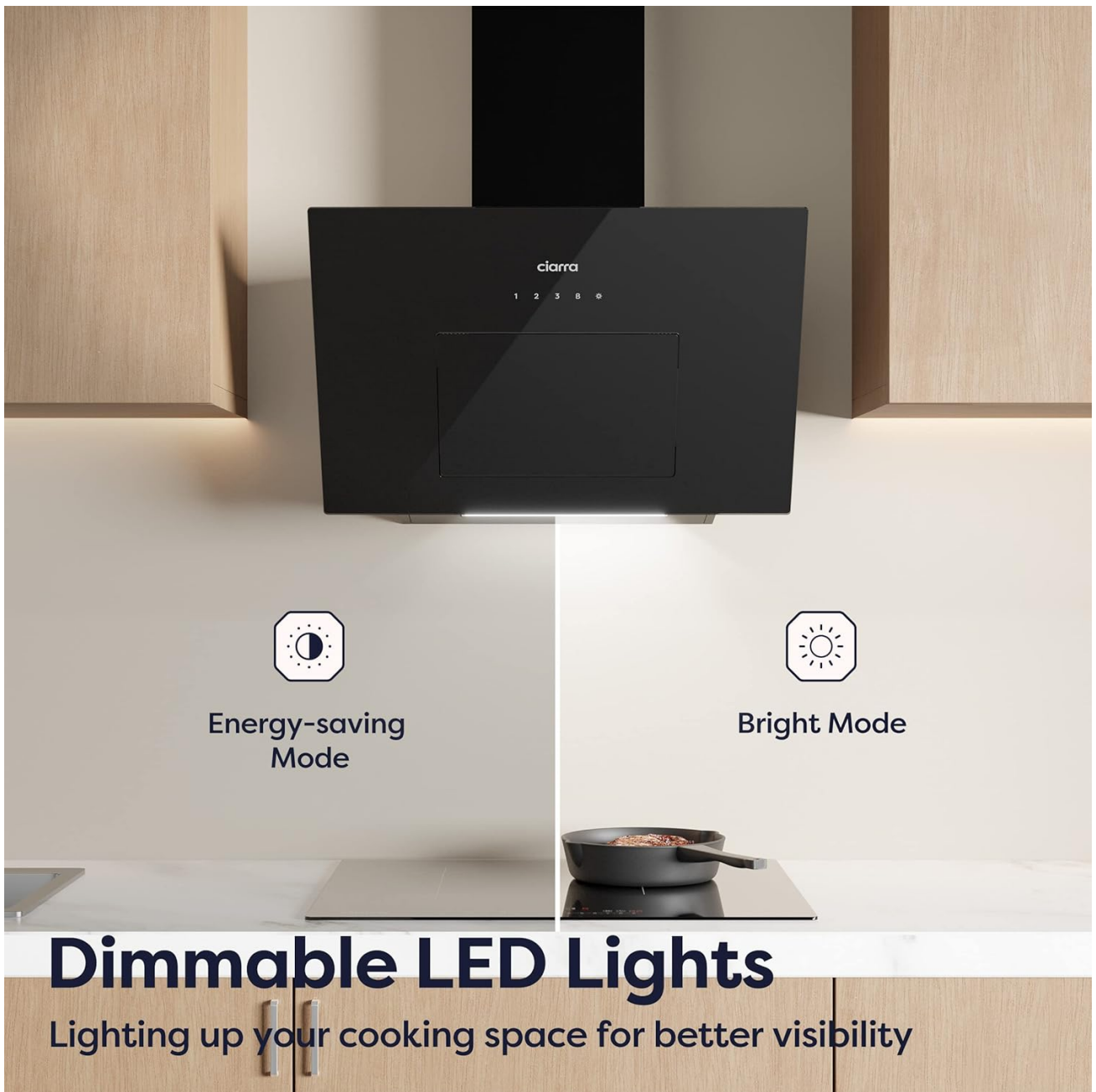


Image: A split image demonstrating the dimmable LED lights of the cooker hood, showing both an "Energy-saving Mode" (dimmer light) and a "Bright Mode" (full illumination) over a cooking surface.

3.4 Automatic Flap Operation

The front glass panel of the hood automatically opens when the hood is turned on and closes when it is turned off, providing a seamless and elegant appearance.

Volet ouvert et ferme automatiquement



Image: A side-by-side comparison showing the cooker hood's automatic flap in two states: "Démarrage" (Starting), where the flap is open, and "Arrêt" (Stopping), where the flap is closed, with blue arrows indicating the movement.

3.5 Wi-Fi Connectivity

For enhanced convenience, the hood can be controlled via a Wi-Fi connected application on your smartphone or tablet. Refer to the separate Wi-Fi setup guide or the app's instructions for pairing your device.

4. MAINTENANCE AND CLEANING

Regular maintenance ensures the longevity and optimal performance of your cooker hood. Always disconnect the power supply before performing any cleaning or maintenance tasks.

4.1 Cleaning the Exterior

- Wipe the exterior surfaces, especially the glass, with a soft cloth dampened with mild detergent and warm water.
- Avoid abrasive cleaners, scouring pads, or harsh chemicals, as these can damage the finish.
- Dry thoroughly with a clean, soft cloth.

4.2 Cleaning/Replacing Grease Filters

The metal grease filters capture airborne grease particles. They should be cleaned regularly (e.g., monthly, depending on usage) to maintain extraction efficiency.

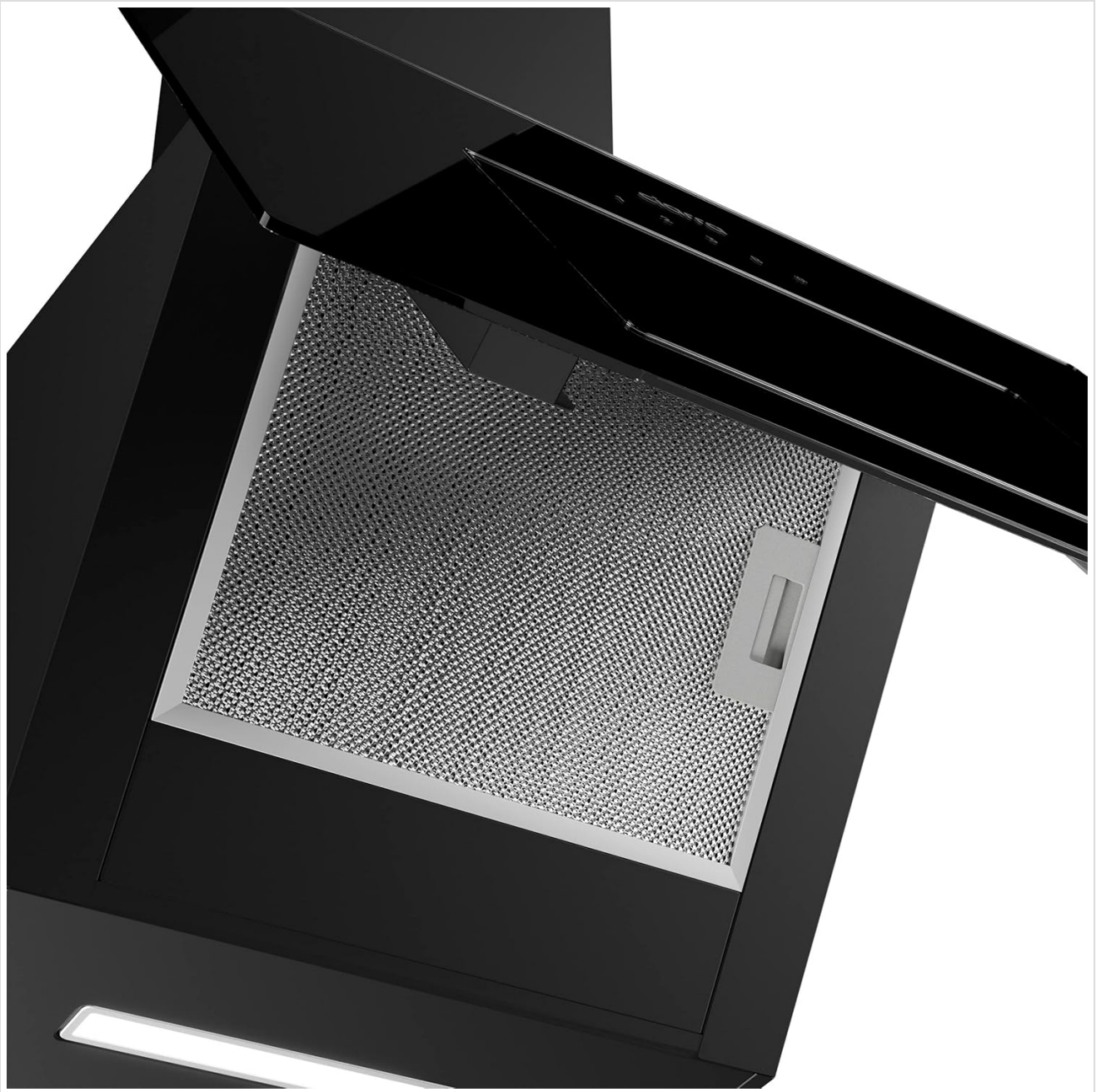


Image: A close-up view of the metal grease filter inside the CIARRA cooker hood, visible when the front panel is open, showing its mesh structure designed to trap grease.

- To remove: Locate the release latches on the filters, push them, and pull the filter downwards.
- Cleaning: Wash the filters by hand in hot soapy water or in a dishwasher on a low-temperature cycle. Ensure they are completely dry before re-installing.
- To re-install: Align the filter with its slot and push it upwards until the latches click into place.

4.3 Replacing Carbon Filters (for Recirculation Mode)

If your hood is operating in recirculation mode, carbon filters are essential for odor removal. These filters cannot be washed and must be replaced periodically (typically every 3-6 months, depending on usage).

- Refer to your specific model's instructions for carbon filter replacement, as the method may vary.
- Ensure you use genuine CIARRA replacement carbon filters for optimal performance.

5. TROUBLESHOOTING

Before contacting customer support, please refer to the following common issues and their potential solutions.

Problem	Possible Cause	Solution
Hood does not operate.	No power supply; power cord disconnected; fuse blown.	Check power connection; check circuit breaker/fuse box.
Low extraction efficiency.	Grease filters clogged; carbon filters saturated (recirculation mode); ducting obstructed (ducted mode); incorrect fan speed.	Clean grease filters; replace carbon filters; check ducting for obstructions; select higher fan speed.
Lights not working.	LED bulb faulty; loose connection.	Contact customer support for LED replacement; check connections if accessible.
Excessive noise.	Loose components; fan obstruction; improper installation.	Check for loose screws or parts; ensure no foreign objects are in the fan; verify correct installation.
Wi-Fi connection issues.	Incorrect Wi-Fi password; router too far; app issues.	Re-enter password; move router closer or use Wi-Fi extender; restart app/phone; consult app's troubleshooting guide.

6. TECHNICAL SPECIFICATIONS

Specification	Value
Model Number	CBCB6736M
Dimensions (L x W x H)	39.5 x 59.6 x 74.7 cm
Weight	11.7 Kilograms
Energy Efficiency Class	A++
Maximum Airflow	650 m ³ /h
Noise Level	58 dB
Voltage	220 Volts
Power	85 Watts
Light Source Type	LED
Material	Glass
Mounting Type	Wall Mounted
Manufacturer	Ciarra
Country of Origin	China

7. WARRANTY AND SUPPORT

For warranty information, product registration, or technical support, please refer to the warranty card included with your product or visit the official CIARRA website. Keep your proof of purchase for any warranty claims.

If you encounter issues not covered in this manual, please contact CIARRA customer service for assistance. Provide your model number (CBCB6736M) and a detailed description of the problem.