



[Manuals.plus](#) /

› [makerzoid](#) /

› Makerzoid Smart Robot 72-in-1 STEM Educational Building Kit Instruction Manual

**makerzoid 6974810050101**

# Makerzoid Smart Robot 72-in-1 STEM Educational Building Kit Instruction Manual

**Brand:** makerzoid | **Model:** 6974810050101

## 1. INTRODUCTION

---

This manual provides comprehensive instructions for the assembly, operation, and maintenance of the Makerzoid Smart Robot 72-in-1 STEM Educational Building Kit. Designed for children aged 6 and above, this kit offers an engaging way to explore robotics, logical thinking, and creative problem-solving through hands-on building.



**Image 1.1:** The Makerzoid Smart Robot kit, showcasing the main robot assembly and several alternative models that can be constructed from the included parts. The product box is visible in the background.

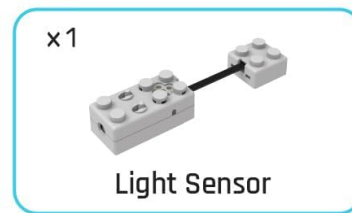
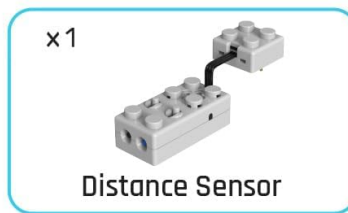
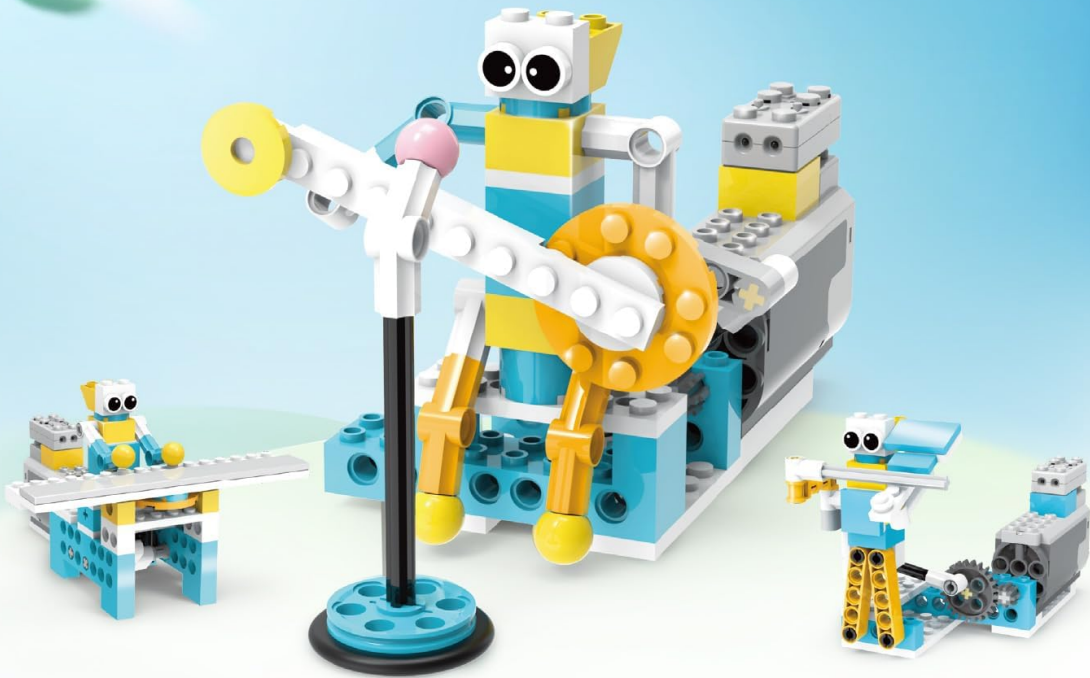
## 2. WHAT'S IN THE BOX

The Makerzoid Smart Robot kit includes the following components:

- **300+ x Blocks:** Various building blocks compatible with major block brands.
- **1 x Control Module:** The central unit for powering and controlling the robot.
- **1 x IR Sensor:** Used for detecting objects or distances.
- **1 x Light Sensor:** Used for detecting light levels.

# Makerzoid Smart Robot

Electrical Mode / Intelligent Mode



**Image 2.1:** Key electronic components of the Makerzoid Smart Robot kit: an intelligently powerful motor, a distance sensor, and a light sensor, shown alongside various robot models.

## 3. ASSEMBLY AND SETUP

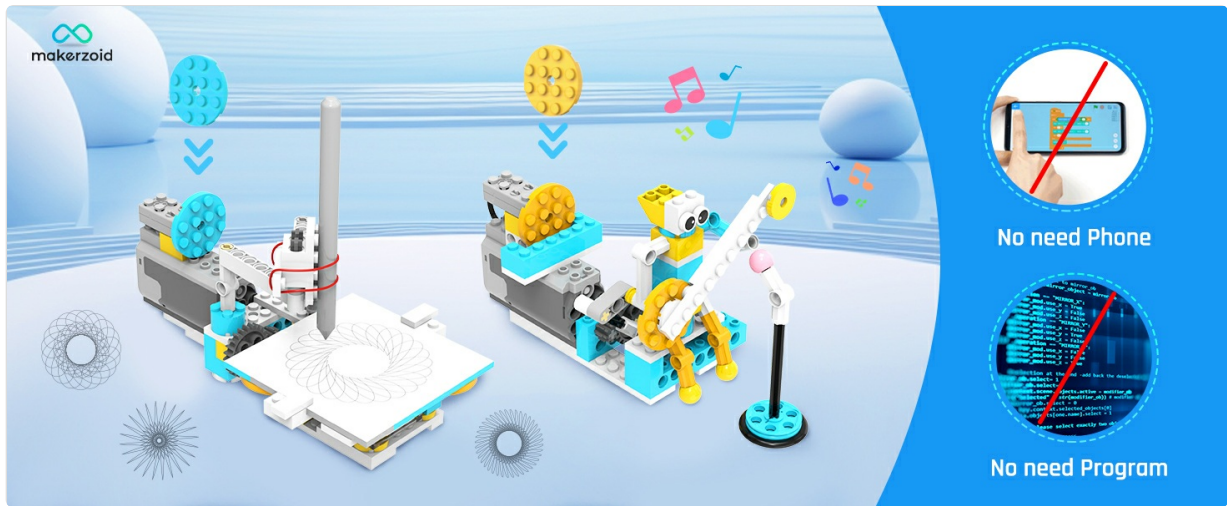
The Makerzoid Smart Robot kit allows for the construction of over 92 different models. Follow the instructions carefully for successful assembly.

### 3.1 Building Instructions

Models can be built using two primary methods:

1. **Paper Manual:** Refer to the included paper instruction manual for step-by-step guidance.
2. **APP 2D/3D Instructions:** Utilize the Makerzoid application for interactive 2D and 3D building instructions. The revolvable 3D instructions enhance comprehension of spatial relationships and design.

Children can typically build a model within 30 minutes, either independently or with adult supervision.



**Image 3.1:** A partially assembled robot model on a table, accompanied by a physical instruction manual and a tablet displaying digital 3D building instructions.

# 92+ IN 1 BUILDING ROBOT KIT



**Blocks 300+**



**Ages 6+**



**makerzoid**

**STEAM**



Science Technology Engineering Arts Mathematics



**Image 3.2:** A collection of diverse robot models constructed from the Makerzoid 72-in-1 building kit, illustrating the wide range of possibilities.

## 4. OPERATING MODES

The Intelligent Motor included in the kit features two distinct operating modes:

- **Electrical Mode:** In this mode, the motor functions as a standard electric component, allowing the robot to move based on basic power input.
- **Intelligent Mode:** This mode enables the robot to exhibit smart behaviors without the need for external app control or complex code programming. The motor's internal logic allows for responsive actions.

The integration of the IR Sensor and Light Sensor further enhances the robot's capabilities, allowing it to interact with its environment.

## 5. INTELLIGENT LOGICAL PROGRAMMING

A unique feature of the Makerzoid Smart Robot is its ability to move and react through intelligent logical programming embedded within the motor itself. This means:

- **No App Control Needed:** The robot does not require a smartphone or tablet application for basic intelligent functions.
- **No Code Programming Needed:** Users do not need to write or input complex code to make the robot perform intelligent actions.

This design simplifies the learning process, allowing children to focus on mechanical principles and observe immediate results from their constructions.



**Image 5.1:** A Makerzoid robot configured to draw intricate patterns, demonstrating its intelligent capabilities without requiring a phone or programming code.

## 6. EDUCATIONAL BENEFITS AND FEATURES

The Makerzoid Smart Robot kit is designed to provide significant educational value:

- **STEM Learning:** Introduces fundamental concepts in Science, Technology, Engineering, and Mathematics.
- **Robotics Knowledge:** Children learn about machinery, gears, structural design, and transmission systems.
- **Logical Thinking:** Enhances problem-solving skills and logical reasoning through construction and operation.
- **Creativity and Imagination:** Encourages innovative design and the ability to create diverse models.

- **Hands-on Ability:** Develops fine motor skills and practical building experience.

## 92+ IN 1 BUILDING ROBOT KIT

- Logical Thinking
- Problem Solving
- Imagination
- Creativity



**Image 6.1:** A young child engaged in thought while looking at robot components, emphasizing the development of logical thinking, problem-solving, imagination, and creativity.



**Image 6.2:** A visual representation of the diverse models achievable with the 72-in-1 building set, categorized into Agriculture, Music, and Training series, showcasing the kit's versatility.

## 7. MAINTENANCE

To ensure the longevity and proper functioning of your Makerzoid Smart Robot kit, please follow these maintenance guidelines:

- **Cleaning:** Wipe blocks and electronic components with a dry, soft cloth. Avoid using water or cleaning solutions directly on electronic parts.

- **Storage:** Store all components in a dry, cool place away from direct sunlight and extreme temperatures. Keep small parts in their designated storage areas to prevent loss.
- **Battery Care:** If the control module uses batteries, ensure they are inserted correctly. Remove batteries if the toy will not be used for an extended period to prevent leakage.
- **Handling:** Handle electronic components with care to avoid damage. Do not force connections.

## 8. TROUBLESHOOTING

---

If you encounter issues with your Makerzoid Smart Robot, consider the following troubleshooting steps:

- **Robot Not Moving:**
  - Check if the control module is powered on.
  - Ensure batteries are correctly installed and have sufficient charge.
  - Verify all connections between the motor, sensors, and control module are secure.
  - Confirm the motor is in the correct operating mode (Electrical or Intelligent).
- **Sensors Not Responding:**
  - Ensure sensors are properly connected to the control module.
  - Check for any obstructions blocking the sensor's path (for IR sensor).
  - Verify ambient light conditions are appropriate for the light sensor's operation.
- **Parts Not Fitting:**
  - Refer to the instruction manual or app for correct part orientation and placement.
  - Do not force parts together; ensure they are compatible.

If problems persist, please contact customer support for further assistance.

## 9. SPECIFICATIONS

---

Feature	Detail
Product Dimensions	12.59 x 8.26 x 2.2 inches
Item Weight	1.74 pounds
Model Number	6974810050101
Manufacturer Recommended Age	6 - 15 years
Number of Blocks	300+
Number of Models	92+
Sensors Included	IR Sensor, Light Sensor

## 10. SAFETY INFORMATION

---

Please read and adhere to the following safety guidelines:

- **Choking Hazard:** This kit contains small parts and is not suitable for children under 3 years of age. Adult supervision is recommended for all users, especially younger children.
- **Battery Safety:** Use only recommended battery types. Do not mix old and new batteries, or different types of batteries. Insert batteries with correct polarity. Remove exhausted batteries promptly.
- **Electrical Components:** Do not attempt to modify or disassemble the electronic components. Keep them away from water and extreme heat.
- **General Use:** Do not throw or misuse the robot. Ensure a clear play area to prevent accidents.

## 11. SUPPORT AND WARRANTY

---

### 11.1 Customer Support

For any questions, technical assistance, or issues not covered in this manual, please contact Makerzoid customer support. Refer to the product packaging or the official Makerzoid website for contact details.

### 11.2 Warranty Information

Information regarding product warranty, including terms and conditions, can typically be found on the product packaging or the official Makerzoid website. Please retain your proof of purchase for warranty claims.

© 2025 makerzoid. All rights reserved.

This manual is for informational purposes only. Product specifications are subject to change without notice.