

Amico 97b0e08d-c22c-4b6d-ba60-f1c2723081d5

Amico 6 Inch 5CCT Ultra-Thin LED Recessed Ceiling Light Instruction Manual

Model: 97b0e08d-c22c-4b6d-ba60-f1c2723081d5

Brand: Amico

1. Safety Information

Please read all instructions carefully before installation and retain this manual for future reference. Failure to follow these instructions may result in electric shock, fire, or other hazards.

- **Electrical Safety:** Always turn off power at the circuit breaker before beginning installation, inspection, or removal. Ensure all electrical connections comply with local codes and ordinances. If you are unsure about wiring, consult a qualified electrician.
- **IC Rated:** This Amico LED recessed light is IC rated, meaning it is approved for direct contact with insulation in ceilings. This design minimizes fire hazards when installed in various ceiling types and overhead joists.
- **Voltage:** This product is designed for 120 Volts AC.
- **Dimmable:** Ensure that any dimmer switch used is compatible with LED lighting and rated for the appropriate wattage.
- **Indoor Use Only:** This product is intended for indoor use.

2. Product Overview

The Amico 6 Inch 5CCT Ultra-Thin LED Recessed Ceiling Light offers versatile and efficient lighting solutions for various indoor spaces. Its ultra-thin design and integrated junction box simplify installation, eliminating the need for traditional recessed cans.

Key Features:

- **5 CCT Selectable:** Choose from five color temperatures (2700K, 3000K, 3500K, 4000K, 5000K) to match your desired ambiance. The selection switch is located on the junction box.

- **Easy Installation:** Designed for quick and hassle-free installation in minutes, suitable for both retrofit and new construction.
- **IC Rated:** Approved for direct contact with ceiling insulation, ensuring safety and thermal protection.
- **High Brightness:** Delivers 1050 lumens of light output with only 12 watts of power consumption, equivalent to a 110W halogen lamp.
- **Smooth Dimming:** Compatible with most standard LED dimmers, allowing for 5%-100% smooth dimming.
- **Durable Construction:** Made with aluminum for efficient heat dissipation and long lifespan.

What's in the Box:

- LED Recessed Light Fixture
- Junction Box
- 1:1 Hole Template

3. Installation (Setup)

Follow these steps for a safe and efficient installation of your Amico LED recessed light. Ensure power is OFF at the circuit breaker before starting.

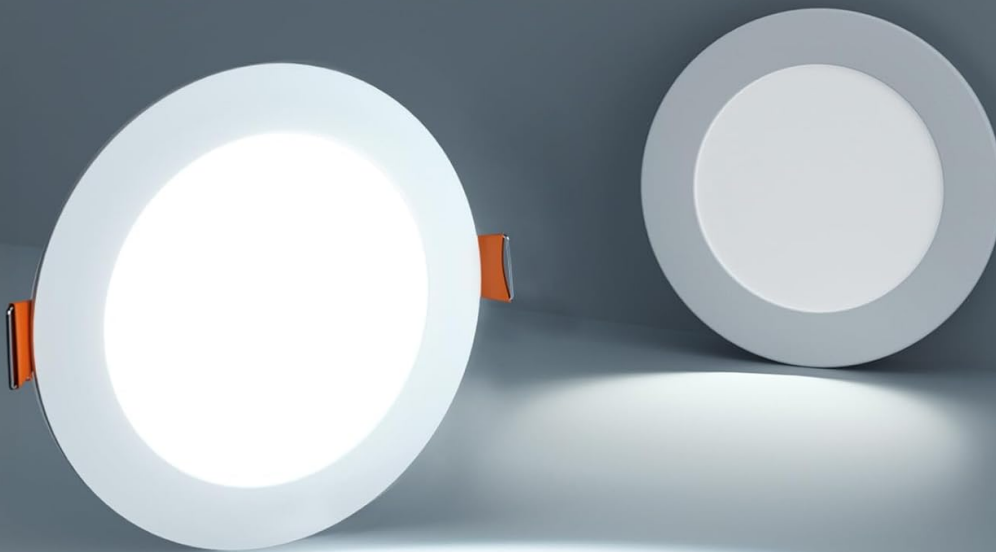
Step 1: Prepare the Ceiling Hole

Using the provided 1:1 hole template, mark the desired location on your ceiling. Cut a 6.25-inch diameter hole. Ensure there are no obstructions (like joists or pipes) in the ceiling space.



Super Bright

Updated LED chips with higher lumens and lower power



Ours ★★★★★	Brightness 1050LM	Dimmable 5–100%	Wattage 12W
Others ★	Brightness 850LM	Dimmable 10–100%	Wattage 14W



Image: Illustration of cutting a 6.25-inch hole in the ceiling using a template and hole saw.

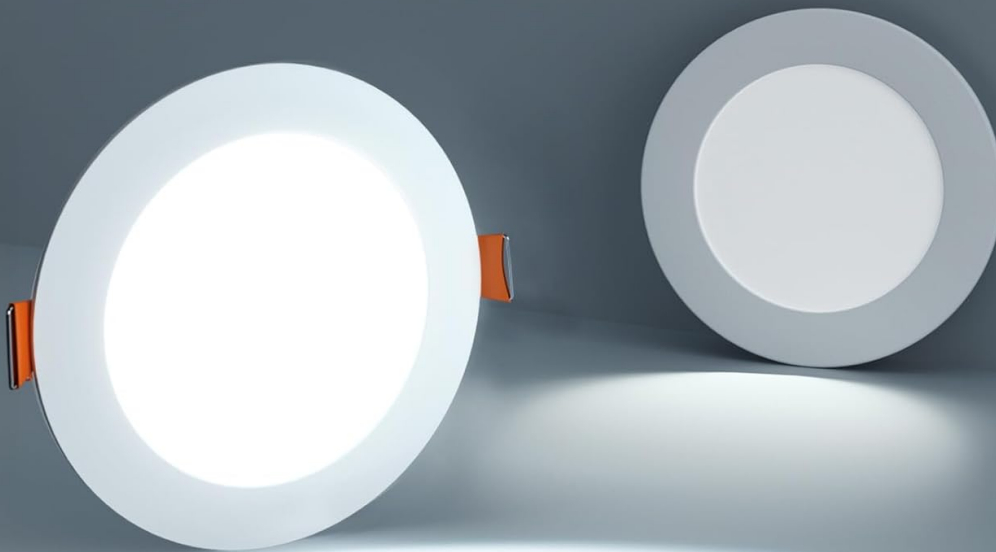
Step 2: Connect Wiring to the Junction Box

Open the junction box cover. Connect the household electrical wires to the corresponding wires inside the junction box (Black to Black, White to White, Ground to Ground). Secure connections with wire nuts. Close the junction box cover. It is recommended to use a Romex connector when passing the wire into the box for secure installation.



Super Bright

Updated LED chips with higher lumens and lower power



Ours ★★★★★	Brightness 1050LM	Dimmable 5–100%	Wattage 12W
Others ★	Brightness 850LM	Dimmable 10–100%	Wattage 14W



Image: Illustration showing the connection of household wiring to the junction box.

Step 3: Select Color Temperature (CCT)

Before mounting the light, locate the 5CCT selection switch on the side of the junction box. Slide the switch to your desired color temperature (2700K, 3000K, 3500K, 4000K, or 5000K). This allows you to customize the light ambiance for your room.

5 CCT in One

Free to choose any ambiance you want



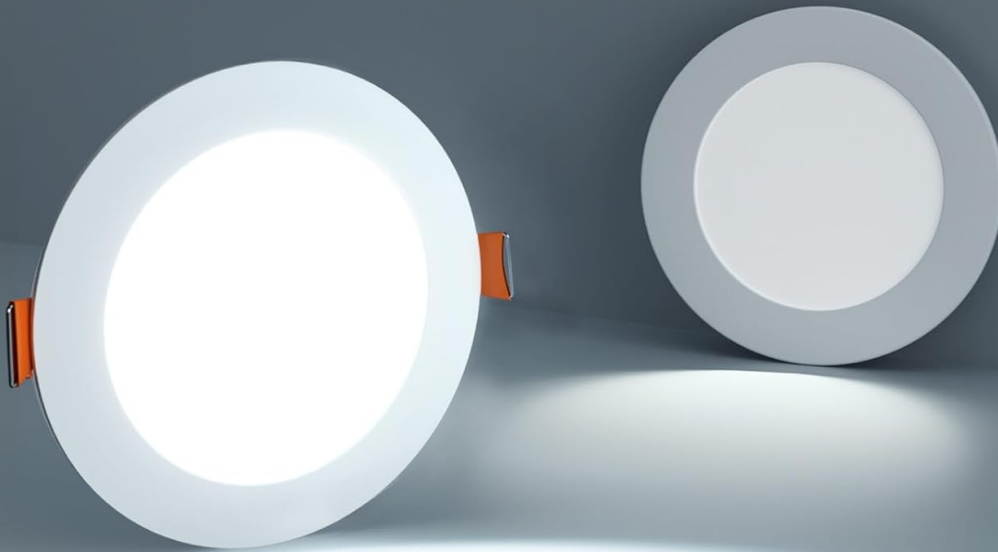
Image: A visual guide demonstrating the 5CCT switch on the junction box and how different color temperatures (2700K, 3000K, 3500K, 4000K, 5000K) can be used in various room settings like bedrooms, bathrooms, studies, living rooms, and kitchens.

Step 4: Connect Light Panel to Junction Box

Connect the cable from the LED light fixture to the junction box. Ensure the connection is secure.

Super Bright

Updated LED chips with higher lumens and lower power



Ours ★★★★★	Brightness 1050LM	Dimmable 5–100%	Wattage 12W
Others ★	Brightness 850LM	Dimmable 10–100%	Wattage 14W



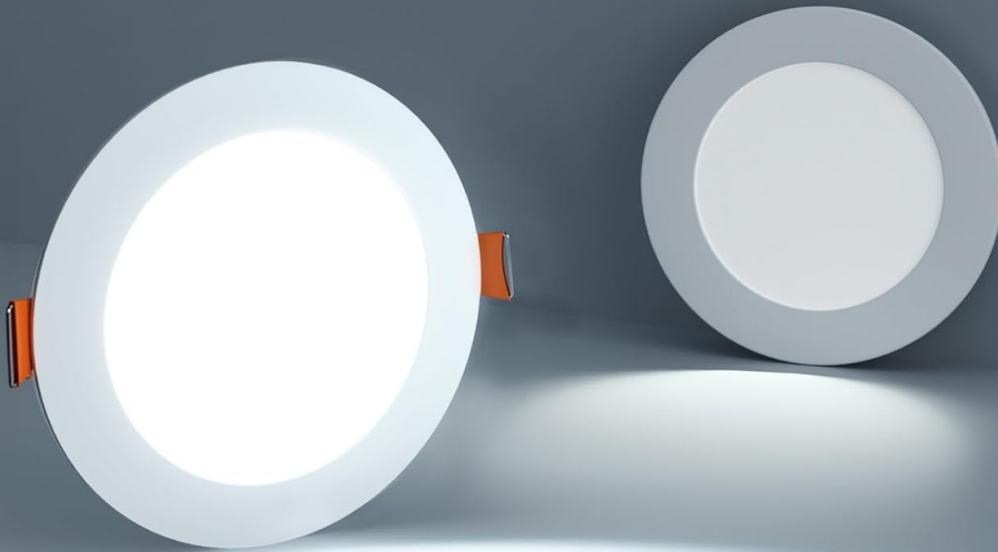
Image: Illustration showing the connection of the LED light panel's cable to the junction box.

Step 5: Mount the Light Fixture

Gently push the spring clips on the sides of the light fixture upwards and insert the fixture into the ceiling hole. The clips will secure the light in place against the ceiling. Ensure the junction box is placed inside the ceiling cavity.

Super Bright

Updated LED chips with higher lumens and lower power



Ours ★★★★★	Brightness 1050LM	Dimmable 5–100%	Wattage 12W
Others ★	Brightness 850LM	Dimmable 10–100%	Wattage 14W



Image: Illustration of pushing the LED light fixture into the ceiling hole, showing the spring clips holding it in place.

Product Dimensions:

Dimensions

Advised hole cutout size: 6.25"

No HOUSING
NEEDED

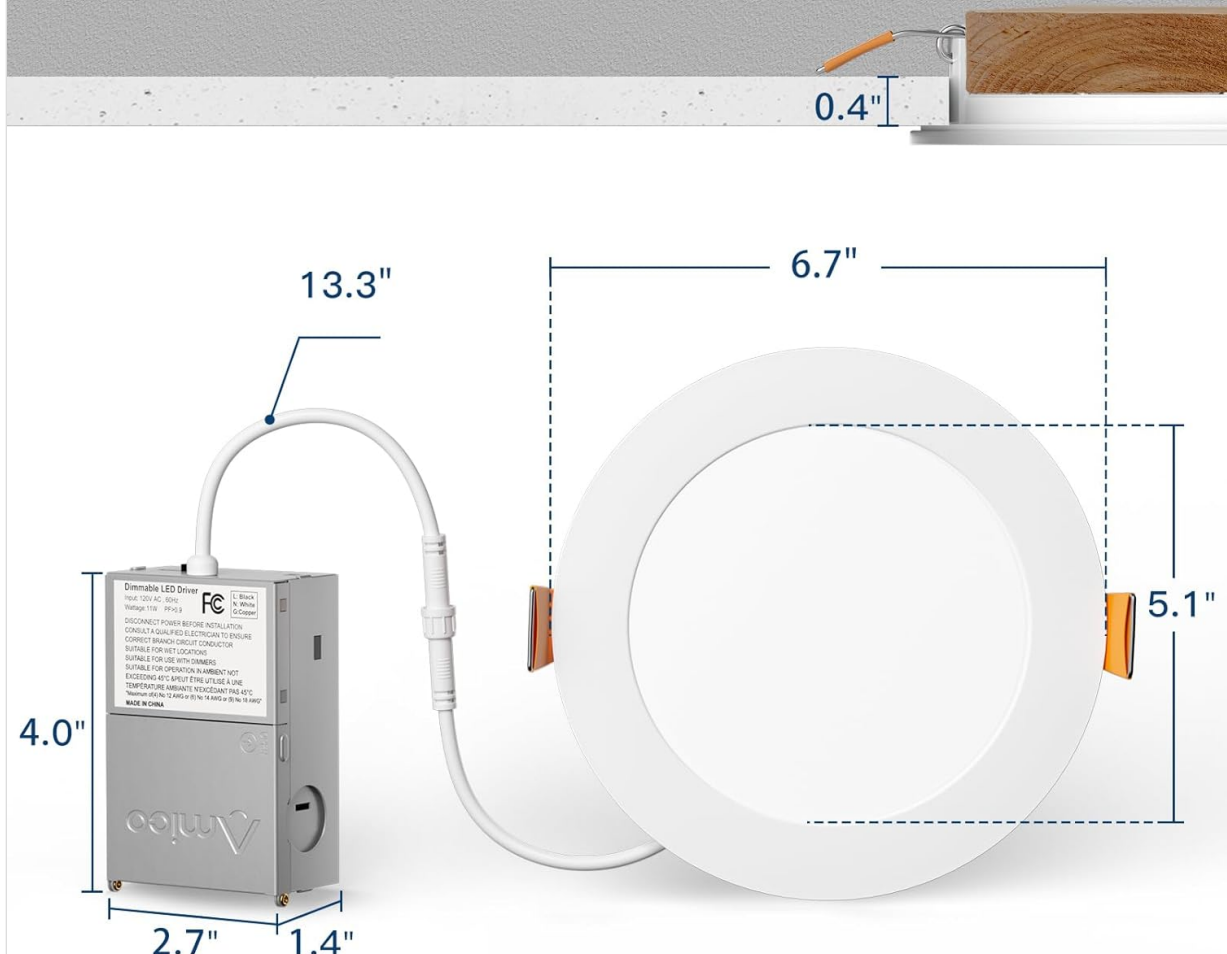


Image: A detailed diagram illustrating the dimensions of the 6-inch LED recessed light fixture (6.7\"L x 6.7\"W x 0.9\"H) and its associated junction box (4.0\"L x 2.7\"W x 1.4\"H), with an advised hole cutout size of 6.25 inches.

4. Operating Instructions

Turning On/Off:

Once installed and power is restored at the circuit breaker, operate the light using your standard wall switch.

Changing Color Temperature (CCT):

The color temperature is set using the slide switch on the junction box during installation. If you wish to change the CCT after installation, you will need to carefully remove the light fixture from the ceiling to access the junction box and adjust the switch. Always turn off power at the circuit breaker before attempting this.

Dimming Functionality:

This LED recessed light is designed for 5%-100% smooth dimming when connected to a compatible LED dimmer switch. Ensure your dimmer switch is suitable for LED lighting to avoid flickering or performance issues.

Stepless Dimming

Matches most dimmers on the market

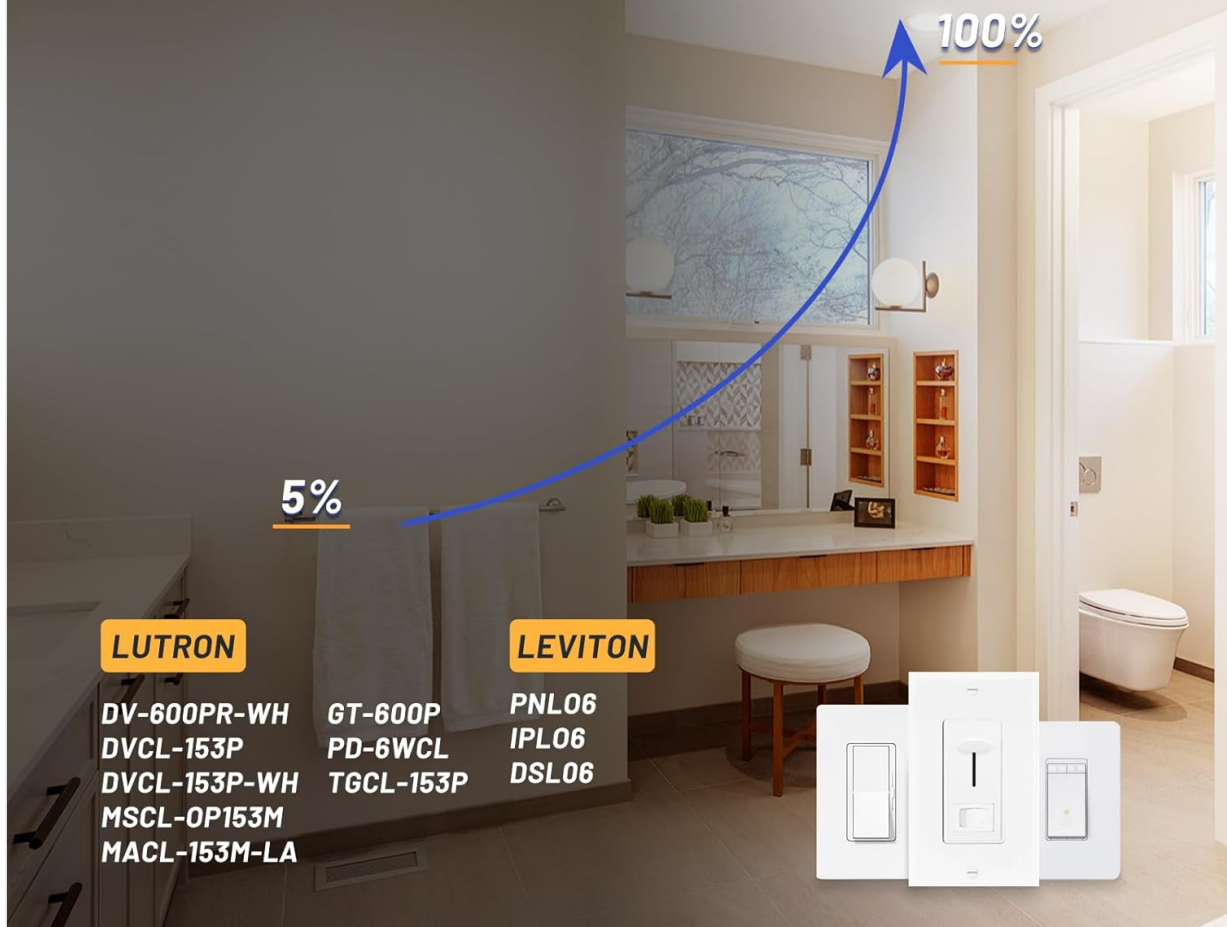


Image: A visual representation of the stepless dimming capability from 5% to 100%, along with a list of compatible dimmer models from brands like Lutron and Leviton.

5. Maintenance

The Amico LED recessed light is designed for long-lasting performance with minimal maintenance.

- **Cleaning:** To clean the fixture, ensure the power is off. Use a soft, dry, or slightly damp cloth. Do not use harsh chemicals or abrasive cleaners, as they may damage the finish or electrical components.
- **No User-Serviceable Parts:** There are no user-serviceable parts inside the fixture. Do not attempt to open or repair the light.
- **Heat Dissipation:** The aluminum construction ensures efficient heat dissipation. Do not cover the fixture with materials that could impede airflow.

6. Troubleshooting

If you encounter issues with your Amico LED recessed light, refer to the following common problems and solutions:

Problem	Possible Cause	Solution
---------	----------------	----------

Problem	Possible Cause	Solution
Light does not turn on.	<ul style="list-style-type: none">• No power to the fixture.• Loose wiring connection.• Faulty switch or dimmer.	<ul style="list-style-type: none">• Check circuit breaker and wall switch.• Turn off power, check all wiring connections in the junction box.• Test with a known working switch or bypass the dimmer temporarily.
Light flickers or hums.	<ul style="list-style-type: none">• Incompatible dimmer switch.• Loose wiring.	<ul style="list-style-type: none">• Ensure dimmer is LED compatible. Replace if necessary.• Turn off power, check all wiring connections.
Incorrect color temperature.	<ul style="list-style-type: none">• CCT switch set incorrectly.	<ul style="list-style-type: none">• Turn off power, carefully remove fixture, adjust CCT switch on junction box.

If the problem persists after trying these solutions, please contact Amico customer support for assistance.

7. Specifications

Feature	Detail
Brand	Amico
Model Number	97b0e08d-c22c-4b6d-ba60-f1c2723081d5
Size	6 Inch (36 Pack)
Light Fixture Form	Recessed
Color Temperature (CCT)	2700K, 3000K, 3500K, 4000K, 5000K Selectable
Wattage	12 Watts
Brightness	1050 Lumens
Voltage	120 Volts
Dimmable	5%-100% Smooth Dimming
Material	Aluminum
Product Dimensions	6.7"L x 6.7"W x 0.9"H
Junction Box Dimensions	4.0"L x 2.7"W x 1.4"H
Advised Hole Cutout Size	6.25 inches
Certifications	ETL, FCC
Indoor/Outdoor Usage	Indoor
Lifespan	50,000 hours

8. Warranty & Support

Amico products are manufactured to high standards and are certified by ETL and FCC, ensuring quality and safety.

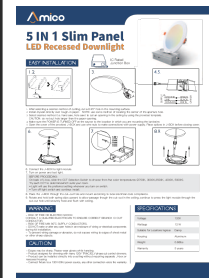
- **Warranty:** This product comes with a Limited Warranty. Please refer to the product packaging or Amico's official website for specific warranty terms and conditions.
- **Customer Support:** For any questions, concerns, or technical assistance, please contact Amico customer support. Our team is committed to addressing your concerns promptly.
- **Contact Information:** Please visit the [Amico Store on Amazon](#) or the official Amico website for contact details.

© 2025 Amico. All rights reserved.

Related Documents - 97b0e08d-c22c-4b6d-ba60-f1c2723081d5



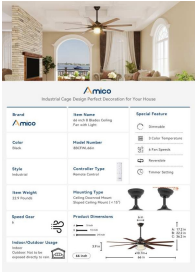
[Amico 3-in-1 Slim Panel LED Recessed Downlight Installation Guide](#)
Installation instructions and specifications for the Amico 3-in-1 Slim Panel LED Recessed Downlight, featuring selectable CCT and easy installation methods for both new construction and remodel applications. Includes safety warnings, cautions, and detailed steps.



[5-in-1 Slim Panel LED Recessed Downlight Installation Guide](#)
Easy installation guide for the 5-in-1 Slim Panel LED Recessed Downlight, including CCT selection and safety warnings.



[Amico Leo Series MIL-Spec MG Downlight | High-Performance LED Fixture](#)
Discover the Amico Leo Series MIL-Spec MG Downlight, a 6-inch recessed LED fixture designed for hospital environments, offering up to 4000 lumens, 3500K-5000K color temperature, and MIL-STD-461G compliance for optimal light output and emissions control.



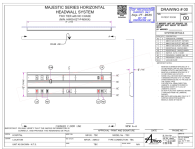
[Amico 66-Inch 8-Blade Industrial Ceiling Fan with Light - Specifications and Features](#)

Comprehensive details on the Amico 66-inch 8-blade industrial cage ceiling fan, including its specifications, motor and light details, blade information, remote control functions, and support contact.



[Amico GoLift Patient Lift: Installation and Operation Manual](#)

Comprehensive installation and operation instructions for the Amico GoLift patient lift system, covering safety, specifications, usage, maintenance, and accessories for 400 lbs and 700 lbs models.



[Amico Majestic Series Horizontal Headwall System Technical Specification](#)

Technical drawing and system details for the Amico Majestic Series Horizontal Headwall System, two-tier, no chase model (HW00-02T-P-MXXX), including component specifications and installation notes.