

[Manuals.plus](#) /

> [JACKYLED](#) /

> JACKYLED Solar Street Light Instruction Manual

JACKYLED Flood-lighting

JACKYLED Solar Street Light Instruction Manual

Model: Flood-lighting (1200W)

1. INTRODUCTION

This manual provides comprehensive instructions for the installation, operation, and maintenance of your JACKYLED Solar Street Light. This high-performance solar-powered LED flood light is designed for outdoor use, offering efficient and reliable illumination for various areas such as yards, driveways, parking lots, and commercial spaces. Featuring a motion sensor, durable EV-grade battery, and advanced solar panel technology, it ensures consistent lighting even in challenging weather conditions.

2. SAFETY INFORMATION

- Always ensure the solar panel is exposed to direct sunlight for optimal charging.
- Do not disassemble or modify the product. Unauthorized modifications may void the warranty and pose safety risks.
- Keep the light away from flammable materials.
- Ensure all mounting hardware is securely fastened to prevent the light from falling.
- Avoid looking directly into the LED light source when it is active, as it can cause eye strain.
- Dispose of batteries according to local regulations.

3. PACKAGE CONTENTS

Verify that all components are present in the package:



Figure 3.1: Package Contents Overview

- 1 x Solar Street Light
- 1 x Tube Mount
- 1 x Mounting Bracket
- 1 x Remote Control
- 2 x AAA Battery (for remote control)
- 2 x Metal Ring
- 4 x Anchor Bolt
- 4 x M8 70mm Bolt
- 1 x Hex Key
- 1 x User Manual (this document)

4. PRODUCT FEATURES

- **Extended Lighting Duration:** Equipped with a 30,000 mAh EV-grade battery, providing over 15 hours of illumination in motion sensor mode.
- **Durable EV-Grade Battery:** Designed for longevity with a service life of up to 80,000 hours (over 8 years), minimizing maintenance needs.
- **All-Weather Performance:** Capable of operating for up to 2 continuous gloomy or rainy days after a full charge, ensuring reliable light regardless of sunlight intensity.
- **High Brightness & Wide Coverage:** Delivers 120,000 Lumens of super bright light, covering an area of up to 960 square feet with its wide-angle lighting technology.
- **Fast Charging:** Upgraded solar panel allows for a full charge in approximately 4 hours under strong sunlight.
- **Motion Sensor:** Automatically adjusts brightness from dim to full when motion is detected.

- **Dusk to Dawn Operation:** Automatically turns on at dusk and off at dawn.
- **Remote Control:** Offers convenient control over lighting modes and timing settings.

Fully Charged Only Need 4H

Conversion Rate Up to 25%

[⚡]
4H



Lighting Up to 15H

Supported by 30,000 mAh Battery

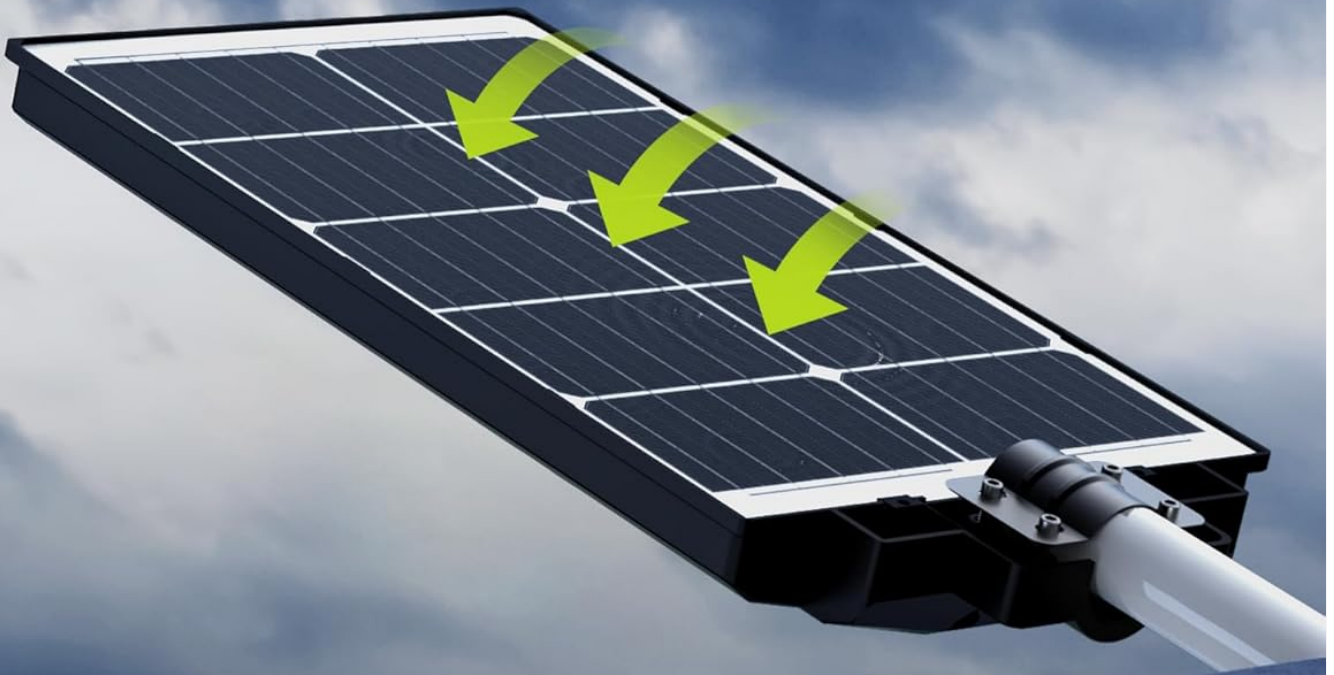
[💡]
15H



Figure 4.1: Efficient Charging and Long Lighting Duration

Gloomy Days? No Problem

Even for **2 Consecutive Gloomy Days**
on Motion Sensor Mode



Premise: The battery is full recharged in a sunny day

Figure 4.2: Performance in Gloomy Conditions

EV-Grade Battery

Service Life Up to **80,000** Hours (Over 8 Years)



EV (Electric Vehicle) graded battery features with a high capacity to provide amazing durability efficiency, and long lifespan

Figure 4.3: EV-Grade Battery Longevity

1 Light Is Enough for Entire Frontyard

220 Wide Angle Lighting
Cover **1080 Sq. Ft** Lighting Area



Figure 4.4: Wide Area Illumination

5. SPECIFICATIONS

| Attribute | Detail |
|-----------|--------|
|-----------|--------|

| | |
|--------------------------------|--|
| Model Name | Flood-lighting (1200W) |
| Brand | JACKYLED |
| Power Source | Solar Powered |
| Light Source Type | LED (1152 individual LEDs) |
| Wattage | 1200 watts |
| Brightness | 120,000 Lumens |
| Color Temperature | 9000 Kelvin (Cool White) |
| CRI (Color Rendering Index) | 90 |
| Battery Type | EV-Grade Lithium Ion (30,000 mAh) |
| Battery Life | Up to 80,000 hours (approx. 8 years) |
| Charging Time | Approx. 4 hours (under strong sunlight) |
| Lighting Duration | 15+ hours (motion sensor mode) |
| Material | Acrylonitrile Butadiene Styrene, Alloy Steel |
| Product Dimensions (L x W x H) | 13.5" x 2.7" x 26.6" |
| Item Weight | 12.36 pounds |
| Water Resistance Level | Waterproof |
| Control Method | Remote Control |
| Installation Type | Wall Mount, Pole Mount |
| Recommended Uses | Outdoor: Garden, Parking lot, Patio, Walkway, Yard, Barn, Driveway, Basketball Court |

6. SETUP AND INSTALLATION

The JACKYLED Solar Street Light offers versatile installation options. Choose a location that receives ample direct sunlight throughout the day for optimal charging performance.

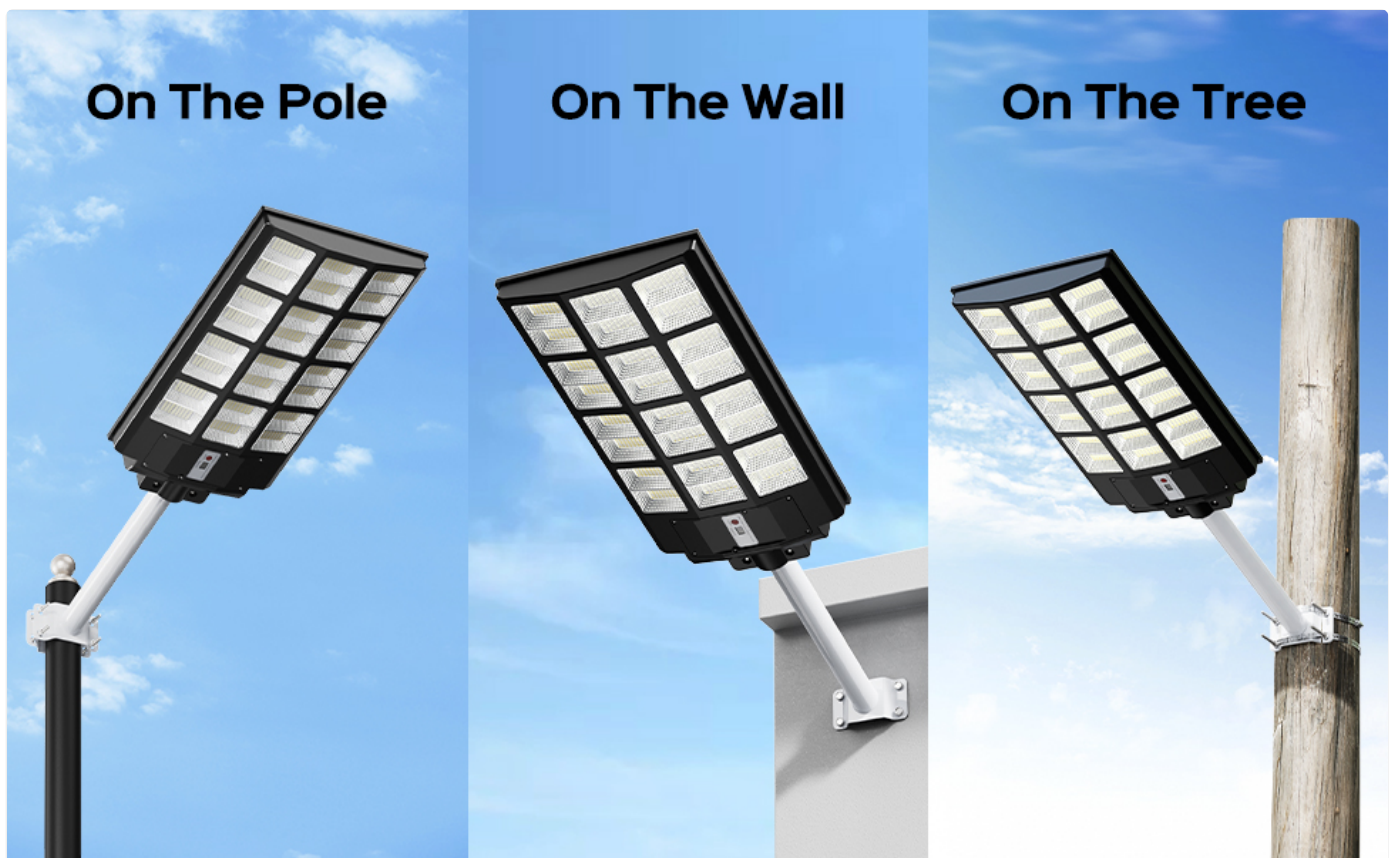


Figure 6.1: Flexible Installation Options

General Installation Steps:

1. **Choose Location:** Select a mounting location that ensures the solar panel receives maximum direct sunlight exposure, free from obstructions like trees or buildings.
2. **Assemble Bracket:** Attach the tube mount to the main light fixture using the provided bolts. Then, attach the mounting bracket to the tube mount.
3. **Mark Drilling Points:** Hold the assembled light and bracket against the desired mounting surface (pole, wall, or tree) and mark the drilling points for the anchor bolts.
4. **Drill Holes:** Drill holes at the marked points using an appropriate drill bit size for the anchor bolts.
5. **Secure Bracket:** Insert the anchor bolts into the drilled holes and securely fasten the mounting bracket to the surface. For pole mounting, use the metal rings to secure the bracket to the pole.
6. **Attach Light:** Mount the solar street light assembly onto the secured bracket. Ensure all connections are tight and secure.
7. **Adjust Angle:** Adjust the angle of the light fixture to optimize illumination for your desired area.

Note: For detailed instructions specific to your mounting surface, refer to the included printed manual. Professional installation is recommended for complex setups or if you are unsure about the process.

7. OPERATING INSTRUCTIONS

The JACKYLED Solar Street Light is controlled via the included remote control. Ensure the AAA batteries are inserted correctly into the remote.



Figure 7.1: Solar Street Light with Remote Control

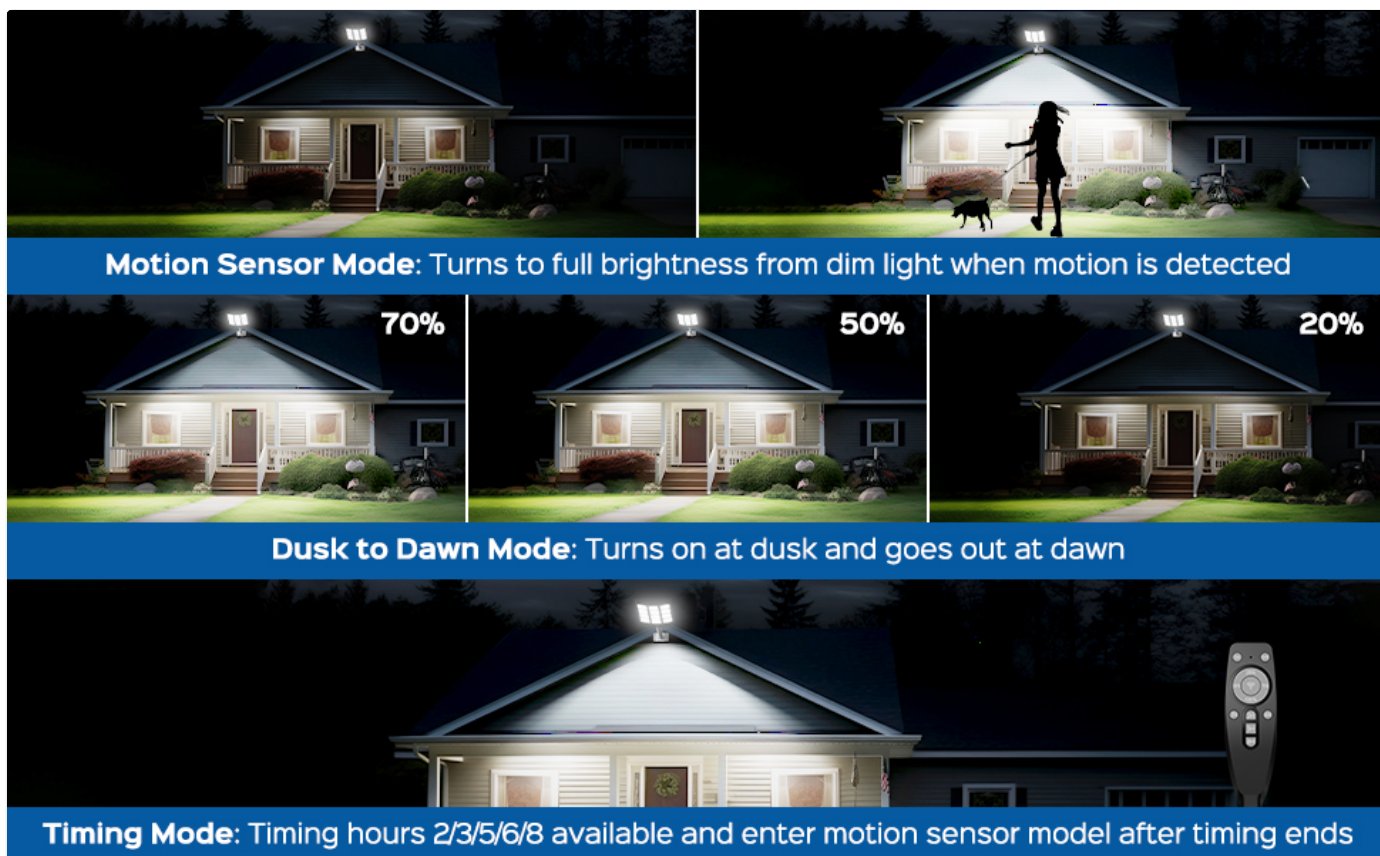


Figure 7.2: Available Lighting Modes

Remote Control Functions:

- **ON/OFF:** Turns the light on or off.
- **Motion Sensor Mode:** Activates the motion sensor. The light will stay dim and brighten to full intensity when motion is detected.
- **Dusk to Dawn Mode:** The light automatically turns on at dusk and turns off at dawn. Brightness can be adjusted (20%, 50%, 70%, 100%).
- **Timing Mode (2H/3H/5H/6H/8H):** Sets the light to stay on for a specified duration (2, 3, 5, 6, or 8 hours) at a set brightness. After the set time, it will switch to motion sensor mode.
- **Brightness Adjustment (25%/50%/75%/100%):** Adjusts the constant brightness level in Dusk to Dawn or Timing modes.

Note: For optimal performance, allow the solar light to charge for at least 6-8 hours in direct sunlight before first use.

8. MAINTENANCE

Regular maintenance ensures the longevity and optimal performance of your solar street light.

- **Clean Solar Panel:** Periodically wipe the solar panel with a soft, damp cloth to remove dust, dirt, leaves, or snow. A clean panel ensures maximum sunlight absorption and charging efficiency.
- **Clean Light Fixture:** Clean the LED light surface and housing as needed to maintain brightness and appearance.
- **Check Connections:** Annually inspect all mounting bolts and connections to ensure they remain tight and secure.
- **Battery Care:** The EV-grade battery is designed for long life and is integrated. No user replacement is typically required. If the light's performance significantly degrades over many years, contact support.
- **Remote Control Batteries:** Replace the AAA batteries in the remote control when its range or responsiveness decreases.

9. TROUBLESHOOTING

If you encounter issues with your JACKYLED Solar Street Light, refer to the following common problems and solutions:

| Problem | Possible Cause | Solution |
|---------------------------------------|--|---|
| Light does not turn on at night. | Insufficient charging due to lack of direct sunlight. Light sensor obstructed. Battery fully discharged. | Ensure solar panel is in direct sunlight for 6-8 hours daily. Clean the solar panel and light sensor. Allow several sunny days for the battery to fully charge. |
| Light stays dim or turns off quickly. | Battery not fully charged. Ambient light interference. | Ensure adequate charging time. Relocate the light away from other strong light sources (e.g., streetlights, house lights) that might trigger the light sensor. |
| Motion sensor not working. | Sensor obstructed or dirty. Light is not in motion sensor mode. | Clean the sensor lens. Use the remote control to select the motion sensor mode. |
| Remote control not working. | Batteries are dead or inserted incorrectly. Remote is too far from the light. | Replace AAA batteries and ensure correct polarity. Operate the remote within its effective range. |

If the problem persists after trying these solutions, please contact customer support.

10. WARRANTY AND SUPPORT

JACKYLED provides a **Lifetime Warranty** for this product, ensuring peace of mind regarding its quality and durability.

This warranty covers defects in materials and workmanship under normal use.

For warranty claims, technical support, or any inquiries regarding your JACKYLED Solar Street Light, please contact our customer service team through the following channels:

- **Email:** Refer to your product packaging or the official JACKYLED website for the most current contact email.
- **Website:** Visit the official JACKYLED website for FAQs, support resources, and contact forms.
- **Amazon Store:** You can also visit the [JACKYLED Store on Amazon](#) for product information and support options.

Please have your product model number (Flood-lighting) and purchase date ready when contacting support to expedite assistance.

