

**sarmert LS07 8336**

# Sarmert 2K Dash Cam LS07 User Manual

Model: LS07 8336

## INTRODUCTION

Thank you for choosing the Sarmert 2K Dash Cam LS07. This compact and powerful dash camera is designed to provide high-quality video recording of your journeys, ensuring peace of mind on the road. With features like 2K QHD resolution, built-in WiFi, G-sensor, and 24-hour parking mode, the LS07 is a reliable companion for your vehicle. This manual will guide you through the setup, operation, and maintenance of your new dash cam.



*Image: The Sarmert 2K Dash Cam LS07 with its compact design and included 32GB Micro SD card.*

## WHAT'S IN THE BOX

Please check the package contents to ensure all items are present:

- 1 x Dash Cam Front (LS07)
- 1 x 32GB Micro SD Card
- 1 x User Manual
- 1 x Pry tool
- 5 x Cable clips
- 2 x Electrostatic sticker
- 1 x Double-sided tape for Mounting
- 1 x Cigar lighter car charger power cable



*Image: Visual representation of all items included in the Sarmert Dash Cam LS07 package.*

## PRODUCT FEATURES

The Sarmert LS07 Dash Cam is equipped with advanced features for optimal performance:

- **2K QHD Resolution:** Records at 2560\*1440P for clear, detailed footage.
- **150° Wide Angle Lens:** Captures a broad view of the road, minimizing blind spots.
- **Built-in WiFi:** Allows wireless connection to your smartphone via the "Kacam" app.
- **G-Sensor:** Automatically detects sudden vibrations or collisions and locks video footage.
- **Super Capacitor:** Provides enhanced durability and withstands extreme temperatures (-4°F to 158°F / -20°C to 70°C).
- **Superior Night Vision:** Ensures clear recordings even in low-light conditions.
- **Voice Guidance:** Provides audible prompts for ease of use.
- **24H Parking Mode:** Offers continuous surveillance when your vehicle is parked (requires hardwire kit, sold separately).
- **Loop Recording:** Automatically overwrites the oldest unlocked files when the SD card is full.

# 2K Dash Cam

Screenless design & Compact



2K



WIFI



G-Sensor



150°



Super Capacitor



Night  
Vision



Voice  
Guidance



Parking  
Monitor



Loop  
Recording



32GB  
Storage

Image: An overview of the Sarmert 2K Dash Cam's main features, including 2K resolution, WiFi, G-Sensor, 150° wide angle, Super Capacitor, Night Vision, Voice Guidance, Parking Monitor, Loop Recording, and 32GB storage.

# Length $\approx$ 1 Finger



*Image: The compact size of the dash cam, measuring approximately 4.17 inches, making it easy to discreetly install.*

## SETUP

### 1. Prepare the SD Card

Insert the provided 32GB Micro SD card into the dash cam's SD card slot. Ensure the card is inserted correctly until it clicks into place. The dash cam supports up to 128GB Micro SD cards.





*Image: Close-up view of the dash cam's side, showing the Micro SD card being inserted into its dedicated slot.*

## 2. Mount the Dash Cam

Choose a suitable location on your windshield, typically behind the rearview mirror, to ensure it does not obstruct your driving view. Clean the windshield surface thoroughly. Apply the electrostatic sticker first, then attach the double-sided tape for mounting onto the electrostatic sticker, and finally secure the dash cam. The swivel mount allows for easy adjustment of the camera angle.



*Image: Diagram illustrating the recommended placement and cable routing for easy installation of the dash cam on the car's windshield.*

### 3. Connect Power

Connect the cigar lighter car charger power cable to the dash cam and plug the other end into your vehicle's 12V power outlet. Route the cable neatly using the provided pry tool and cable clips to avoid interference with driving.

## OPERATING INSTRUCTIONS

### Power On/Off

The dash cam will automatically power on and begin recording when your vehicle's ignition is turned on. It will power off automatically when the ignition is turned off.

### Voice Guidance

The LS07 features voice guidance to provide audible feedback on its status and settings changes, enhancing user convenience without needing a screen.



*Image: An icon representing the voice guidance feature, indicating audible prompts from the dash cam.*

## APP CONTROL (WiFi)

The Sarmert LS07 Dash Cam features built-in WiFi for seamless control and access to your recordings via the "Kacam" mobile application.

### Connecting to the "Kacam" App

1. Download the "Kacam" app from the [Apple App Store](#) (for iOS devices) or [Google Play Store](#) (for Android devices).
2. Turn on the dash cam.
3. On your smartphone, go to WiFi settings and connect to the dash cam's WiFi network (usually named something like "Sarmert\_XXXX"). The default password can be found in the app or on the dash cam

itself.

4. Open the "Kacam" app. You can now view live video, adjust settings, download recorded videos, and share them directly from your phone.

*Note: For optimal connection, keep your mobile phone within 8 meters (26 feet) of the dash cam. The app is compatible with Android 7.0+ and iOS 9.0+.*



*Image: A smartphone screen displaying the "Kacam" app interface, showing live video preview and control options, with the dash cam mounted in a car.*



# Parking Mode



## Time-Lapse Parking Mode(1 second, 1 frame)

If set ON, when you turn OFF the car's engine, the camera will STOP the loop recording and it will go into the Time-lapse Parking Monitor



## Impact Detection Parking Mode

If set ON, when the car's engine is off, the dashcam will also power off, but if someone hits your car, the dash cam will turn on to recording for 1 minute and saved in EMG folder of Micro SD card, then dash cam power off.



*Image: Visual representation of the Kacam app's availability on Apple App Store and Google Play, highlighting built-in WiFi and free app control for video viewing, settings adjustment, download, and online sharing.*

## PARKING MODE

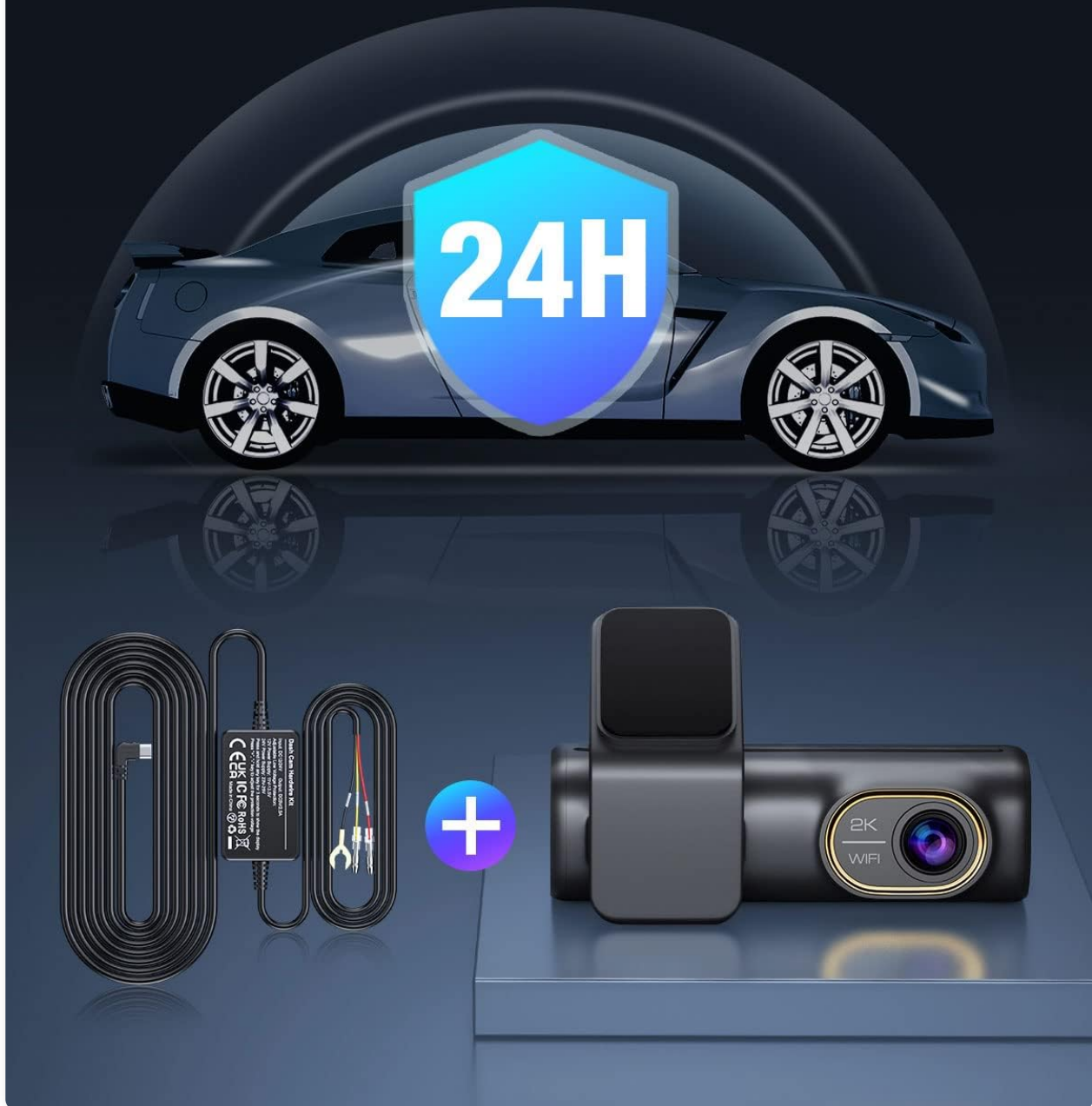
The 24-hour parking mode provides continuous protection for your vehicle even when it's parked. There are two modes to choose from:

- **Time-Lapse Parking Mode:** Records at 1 frame per second, creating a time-lapse video of your parked vehicle's surroundings.
- **Impact Detection Parking Mode:** If an impact or vibration is detected while parked, the dash cam will automatically turn on, record for 1 minute, and save the footage to the emergency folder before powering off.

*Note: The 24-hour parking monitor function requires a dedicated 3-Lead Hardwire Kit (ASIN: B0BL7MWTLM), which is not included in the package and must be purchased separately. Ensure the hardwire kit is installed properly for this function to work.*

# Recommended Hardwire Kit

Support 24 hours recording only when it is connected to a hardwire kit (not included in the package). Please go to [amazon.com](https://www.amazon.com) search Asin: B0BL7MWTLM



*Image: Illustration showing the dash cam and the recommended hardwire kit, emphasizing that 24-hour recording is only supported when connected to a hardwire kit.*

## LOOP RECORDING & G-SENSOR

### Loop Recording

The dash cam continuously records video in short segments (e.g., 1, 3, or 5 minutes). When the Micro SD card reaches its storage limit, the system automatically overwrites the oldest unlocked video files to make

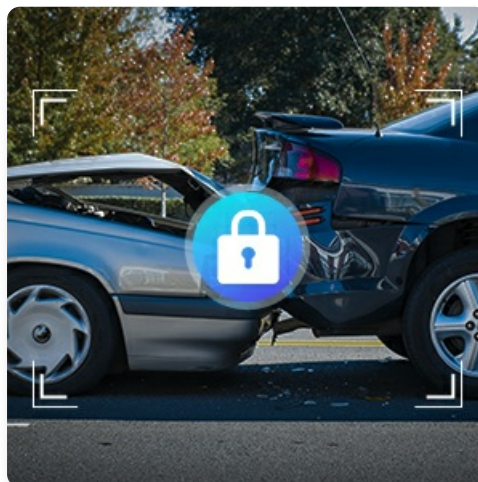
space for new recordings, ensuring seamless and continuous operation.



*Image: A diagram illustrating the loop recording process, where the dash cam records, and when the SD card is full, it overwrites the oldest files.*

## G-Sensor (Emergency Recording)

The built-in G-sensor detects sudden impacts or rapid acceleration/deceleration. When such an event occurs, the dash cam automatically locks the current video segment, preventing it from being overwritten by loop recording. This ensures critical footage of incidents is preserved as important evidence.



*Image: An illustration showing a car collision with a lock icon, indicating that the G-Sensor has automatically locked the emergency footage.*

## NIGHT VISION

The Sarmert LS07 Dash Cam is equipped with superior night vision capabilities, featuring an F1.8 aperture lens and advanced image processing. This allows the camera to capture clear and detailed footage even in challenging low-light conditions, such as nighttime driving or in tunnels, ensuring license plates and other critical details are visible.

# Super Night Vision

Provide clear footage even in low light situations



F1.8



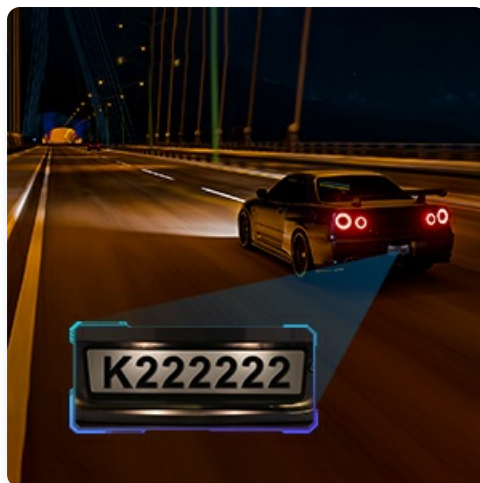
150°



Night Vision



*Image: A car driving at night, demonstrating the dash cam's Super Night Vision with F1.8 aperture and 150° wide angle, clearly capturing a license plate.*



*Image: A close-up of a license plate captured clearly at night, demonstrating the effectiveness of the dash cam's night vision.*



## MAINTENANCE

- **Cleaning:** Use a soft, dry cloth to clean the camera lens and body. Avoid using harsh chemicals or abrasive materials.
- **SD Card Care:** Periodically format the Micro SD card (at least once a month) using the "Kacam" app or a computer to ensure optimal performance and prevent data corruption.
- **Temperature:** The dash cam is designed to withstand extreme temperatures, but avoid prolonged exposure to direct sunlight in extremely hot conditions when the vehicle is parked, if possible.

## TROUBLESHOOTING

- **Dash Cam Not Powering On:** Ensure the power cable is securely connected to both the dash cam and the car's power outlet. Check if the car's 12V outlet is functioning.
- **Recording Issues:** Ensure the Micro SD card is inserted correctly and is not full. Format the SD card if issues persist. Check if the card is a high-speed Class 10 or U3 card.
- **WiFi Connection Problems:** Ensure the dash cam's WiFi is enabled. Keep your phone close to the dash cam. Restart both the dash cam and your phone. Verify you have the correct "Kacam" app version.
- **Footage Not Clear:** Clean the camera lens. Ensure the protective film has been removed from the lens. Check the resolution settings in the app.
- **G-Sensor Too Sensitive/Not Sensitive Enough:** Adjust the G-sensor sensitivity settings within the "Kacam" app.

## SPECIFICATIONS

Feature	Specification
Model Name	LS07 8336
Video Capture Resolution	2560 x 1440P (2K QHD)
Lens Angle	150° Wide Angle
Connectivity Technology	Wi-Fi (2.4G)
Storage	Supports up to 128GB Micro SD Card (32GB included)
Power Source	Super Capacitor
Operating Temperature	-4°F to 158°F (-20°C to 70°C)

Special Features	Automatic Incident Detection, Built-In G-Sensor, Microphone, Night Vision, Loop Recording, Voice Guidance, 24H Parking Mode
Product Dimensions	5.12 x 7.09 x 1.97 inches
Item Weight	0.085 ounces

## WARRANTY AND SUPPORT

The Sarmert LS07 Dash Cam comes with a 12-month warranty from the date of purchase. If you encounter any issues or have questions regarding your product, please do not hesitate to contact Sarmert customer support. Our after-sales team is available to assist you.

For further assistance, please refer to the official Sarmert website or contact their customer service channels.