

NEEWER RF-80II

NEEWER 80cm 5-in-1 Foldable Light Reflector (RF-80II)

Instruction Manual

1. INTRODUCTION

This manual provides instructions for the NEEWER 80cm 5-in-1 Foldable Light Reflector, model RF-80II. This versatile photography accessory is designed to modify and control light for various shooting conditions, both in studio and outdoor environments. It features multiple reflective surfaces to achieve different lighting effects.

2. PRODUCT OVERVIEW

The NEEWER RF-80II reflector is an 80cm (approximately 32-inch) circular light modifier. It consists of a translucent diffuser panel and a reversible zippered cover with four additional reflective surfaces. The unit is designed for portability and ease of use.

2.1 Components

- **Translucent Diffuser Panel:** The core frame, used to soften direct light.
- **Reversible Cover:** Provides four additional surfaces: Silver, Gold, White, and Black.
- **Handles:** Two integrated handles for manual positioning. One handle includes a 3/8" threaded hole for mounting.
- **Carrying Bag:** For compact storage and transport.

2.2 Key Features

- **5-in-1 Functionality:** Offers Translucent, Silver, Gold, White, and Black surfaces.
- **Dual Handles:** Allows for comfortable handheld operation and precise positioning.
- **3/8" Threaded Mount:** Enables attachment to tripods, light stands, or other compatible accessories for hands-free use.

- **Durable Construction:** Features a steel frame designed for repeated folding without deformation.
- **Foldable Design:** Collapses into a compact size for easy storage and transport.

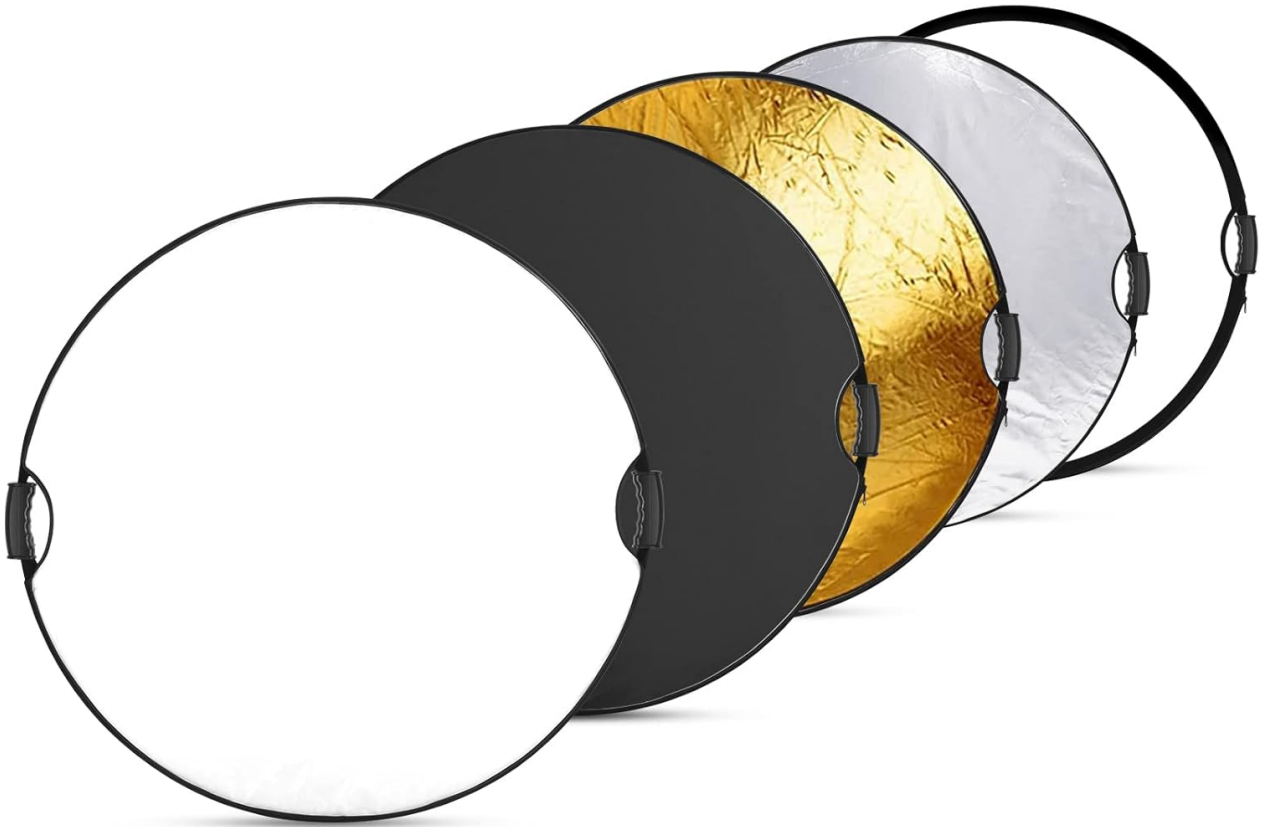


Image: The NEEWER 80cm 5-in-1 Foldable Light Reflector, displaying its various reflective and diffusing surfaces.

Available in 3 sizes

Three sizes of circular reflectors are provided, which can be flexibly applied according to the needs of different scene ranges.



Image: A diagram showing how the five different light effects (White Diffuser, Golden Reflector, Black Reflector, Silver Reflector, White Reflector) are integrated into a single panel.

3. SETUP AND ASSEMBLY

The reflector is designed for quick deployment and packing.

3.1 Unfolding the Reflector

1. Remove the reflector from its carrying bag.
2. Hold the reflector firmly by the edges. It will spring open to its full circular shape. Exercise caution during this step as it can unfold rapidly.
3. Ensure the frame is fully expanded and circular.

3.2 Attaching the Reflective Cover

The reversible cover is pre-attached to the translucent diffuser panel. To change surfaces:

1. Locate the zipper along the edge of the cover.
2. Unzip the cover to expose the desired reflective surface (Silver, Gold, White, or Black).
3. Zip the cover back up, ensuring the desired surface is facing outwards.

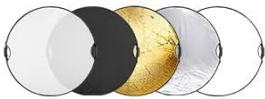
4. OPERATING INSTRUCTIONS

The 5-in-1 reflector offers various light modification options to suit different photographic needs.

4.1 Understanding the Surfaces

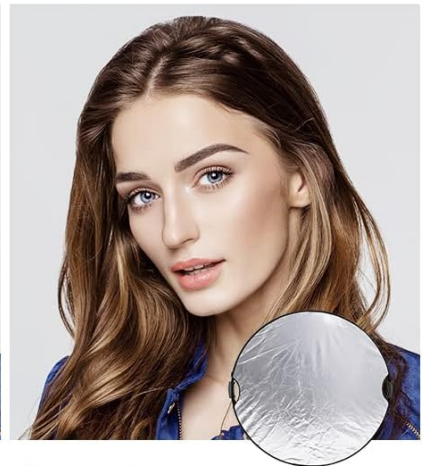
- **Translucent (Diffuser):** Used to soften direct light, reducing harsh shadows and creating a more even illumination. Place it between the light source and the subject.
- **Silver Reflector:** Provides a bright, specular reflection, increasing contrast and light output. Ideal for enhancing light in low-light situations or for a crisp, cool look.
- **Gold Reflector:** Produces a warm, golden reflection, adding a natural sun-kissed glow. Suitable for portraits, sunset scenes, or creating warm halo effects.
- **White Reflector:** Offers a soft, neutral reflection, filling in shadows without altering the color temperature of the light. Excellent for subtle fill light.
- **Black "Anti-Reflector":** Used to absorb light, creating deeper shadows and increasing contrast. Can be used to block unwanted reflections or to add definition.

5 In 1 Reflector



Gold Reflector

Helpful for creating warm outdoor sunset scenes, or angelic halo effects.



Silver Reflector

Used to enhance the light in low light situations where strong light is needed.



White Reflector

Develops a soft, clean light and it also helps to decompress the flash.



Black Reflector

An 'anti reflector' because it makes a shadow, and creates a certain dark and mysterious mood.



Translucent Reflector

Acts as a diffuser between the light source and the subject, which softens the harsh appearance.

Image: Visual examples demonstrating the distinct lighting effects produced by the Gold, Silver, White, Black, and Translucent reflector surfaces on a subject.

4.2 Positioning the Reflector

The reflector can be used in two primary ways:

- **Handheld Use:** Utilize the two integrated handles to manually position the reflector. This allows for dynamic adjustments and quick changes in lighting angles.
- **Tripod/Stand Use:** The 3/8" threaded hole on one of the handles allows the reflector to be mounted onto a compatible light stand, tripod, or articulating arm. This provides stable, hands-free operation, which is beneficial for self-portraits or when working alone.



Image: Demonstrations of the reflector being used handheld by an assistant and mounted on a tripod for stable positioning.



Supports Double or Single Handle Use

Features 2 side handles, one with a 3/8" threaded hole, for handheld or tripod use.

Image: The reflector being held by its handles, highlighting the 3/8-inch threaded mount on one of the handles for accessory attachment.

5. MAINTENANCE AND CARE

Proper care will extend the lifespan and maintain the performance of your reflector.

- **Cleaning:** Gently wipe the reflective surfaces with a soft, damp cloth if they become dirty. Avoid abrasive cleaners or harsh chemicals.
- **Storage:** Always fold the reflector back into its compact size and store it in the provided carrying bag when not in use. This protects the surfaces and frame from damage.
- **Handling:** While the steel frame is durable, avoid excessive force or sharp objects that could puncture or tear the fabric.

5.1 Folding Instructions

To fold the reflector back into its compact size:

1. Hold the reflector by its opposite edges.
2. Twist the edges in opposite directions, forming a figure-eight shape.

3. Bring the two loops of the figure-eight together, allowing the reflector to collapse into three smaller circles.
4. Secure the folded reflector with any integrated straps or place it directly into the carrying bag.

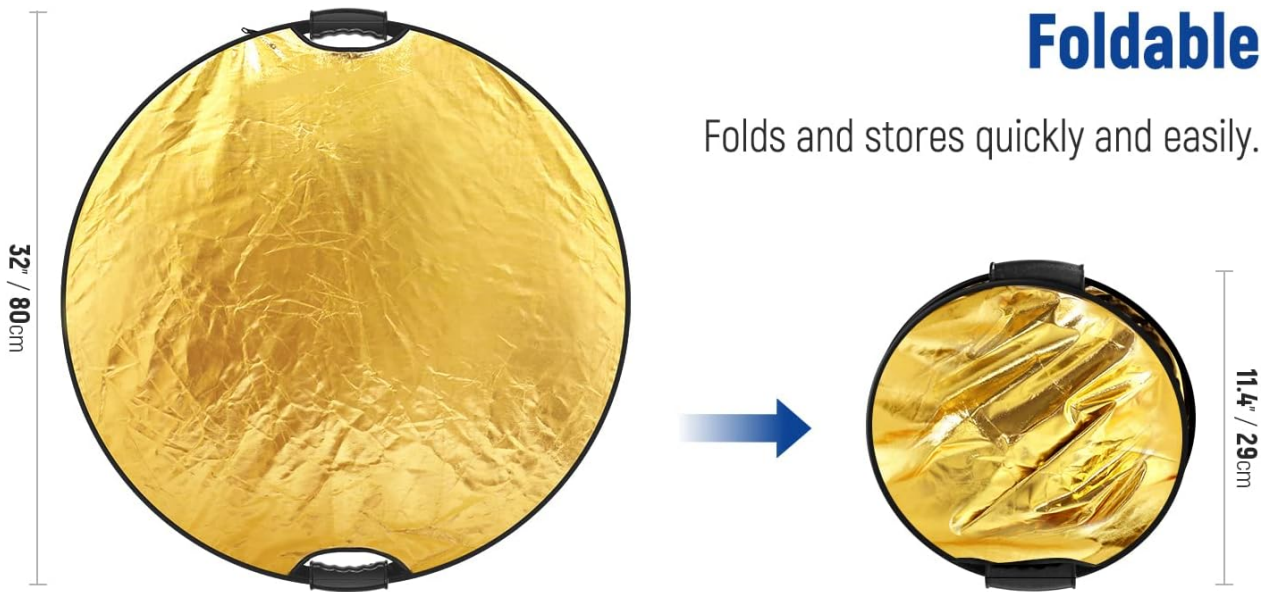


Image: A step-by-step visual guide on folding the reflector for compact storage.



Portable Bag
Comes with a zippered carrying bag for easy portability
for outdoor shooting.

Image: The reflector stored in its portable carrying bag, ready for transport.

6. TROUBLESHOOTING

If you encounter any issues with your reflector, consider the following:

- **Reflector not opening fully:** Ensure the frame is not bent or obstructed. Gently manipulate the edges to help it spring into shape.
- **Difficulty folding:** Refer to the folding instructions in Section 5.1. Practice may be required to master the technique.
- **Damaged fabric:** Small tears can sometimes be repaired with fabric adhesive or tape. For significant damage, replacement may be necessary.

For further assistance, please contact NEEWER customer support.

7. SPECIFICATIONS

Feature	Detail
Model Number	RF-80II
Product Dimensions	80cm (approx. 32 inches) diameter
Item Weight	1.32 pounds
Material	Aluminum frame, Fabric surfaces
Surfaces Included	Translucent, Silver, Gold, White, Black
Mounting	Integrated handles, one with 3/8" threaded hole

8. WARRANTY AND SUPPORT

For warranty information or technical support, please refer to the official NEEWER website or contact their customer service directly. Keep your purchase receipt for warranty claims.

Official NEEWER Website: www.neewer.com