



[Manuals.plus](#) /

› [PHILIPS](#) /

› Philips Sonicare Electric Toothbrush EssentialClean User Manual

## PHILIPS Philips148

# Philips Sonicare Electric Toothbrush EssentialClean User Manual

Model: Philips148

## INTRODUCTION

---

Welcome to the user manual for your new Philips Sonicare Electric Toothbrush EssentialClean. This manual provides essential information for the safe and effective use of your toothbrush, including setup, operation, maintenance, and troubleshooting. Please read this manual thoroughly before first use and retain it for future reference.



**Image Description:** The Philips Sonicare EssentialClean electric toothbrush is shown alongside its retail packaging, charging base, and a white travel case. The toothbrush itself is white with a light blue power button and a green-tipped brush head.

## WHAT'S IN THE BOX

---

Upon opening your Philips Sonicare EssentialClean package, you should find the following components:

- 1 x Philips Sonicare EssentialClean Toothbrush Handle
- 1 x DiamondClean Brush Head
- 1 x Charging Base
- 1 x Travel Case
- This User Manual

## SETUP

---

### 1. Charging the Toothbrush

1. Plug the charging base into an electrical outlet.

2. Place the toothbrush handle onto the charging base.
3. The battery indicator light on the handle will illuminate to show that the toothbrush is charging. A full charge typically takes approximately 24 hours and provides up to 2 weeks of regular use.



**Image Description:** The Philips Sonicare EssentialClean toothbrush handle is shown resting on its white charging base. A green indicator light is visible on the handle, signifying that the device is charging.

## 2. Attaching the Brush Head

1. Align the brush head with the metal shaft on the toothbrush handle.
2. Push the brush head down firmly until it clicks into place.
3. To remove, pull the brush head straight up from the handle.

## OPERATING THE TOOTHBRUSH

---

### Brushing Technique

1. Wet the bristles and apply a small amount of toothpaste.
2. Place the brush head against your teeth at a slight angle towards the gumline.
3. Press the power button to start brushing.

4. Gently move the brush head slowly across your teeth in small back-and-forth motions, allowing the sonic vibrations to do the work. Do not scrub.
5. The toothbrush features an **Angled Neck** design to assist in reaching difficult areas, such as back teeth.



**Image Description:** A woman is shown brushing her teeth with the Philips Sonicare toothbrush, demonstrating how the angled neck of the brush head allows for effective cleaning in hard-to-reach areas, particularly the back teeth.

## SmartTimer and QuadPacer

- The **SmartTimer** automatically turns off the toothbrush after 2 minutes of brushing, indicating the recommended brushing time.
- The **QuadPacer** is an interval timer that beeps at 30-second intervals, signaling you to move to another section of your mouth. This helps ensure thorough cleaning of all four quadrants of your mouth.



# REMOVES UP TO 7X MORE PLAQUE THAN A MANUAL TOOTHBRUSH

## ADVANCED SONIC TECHNOLOGY

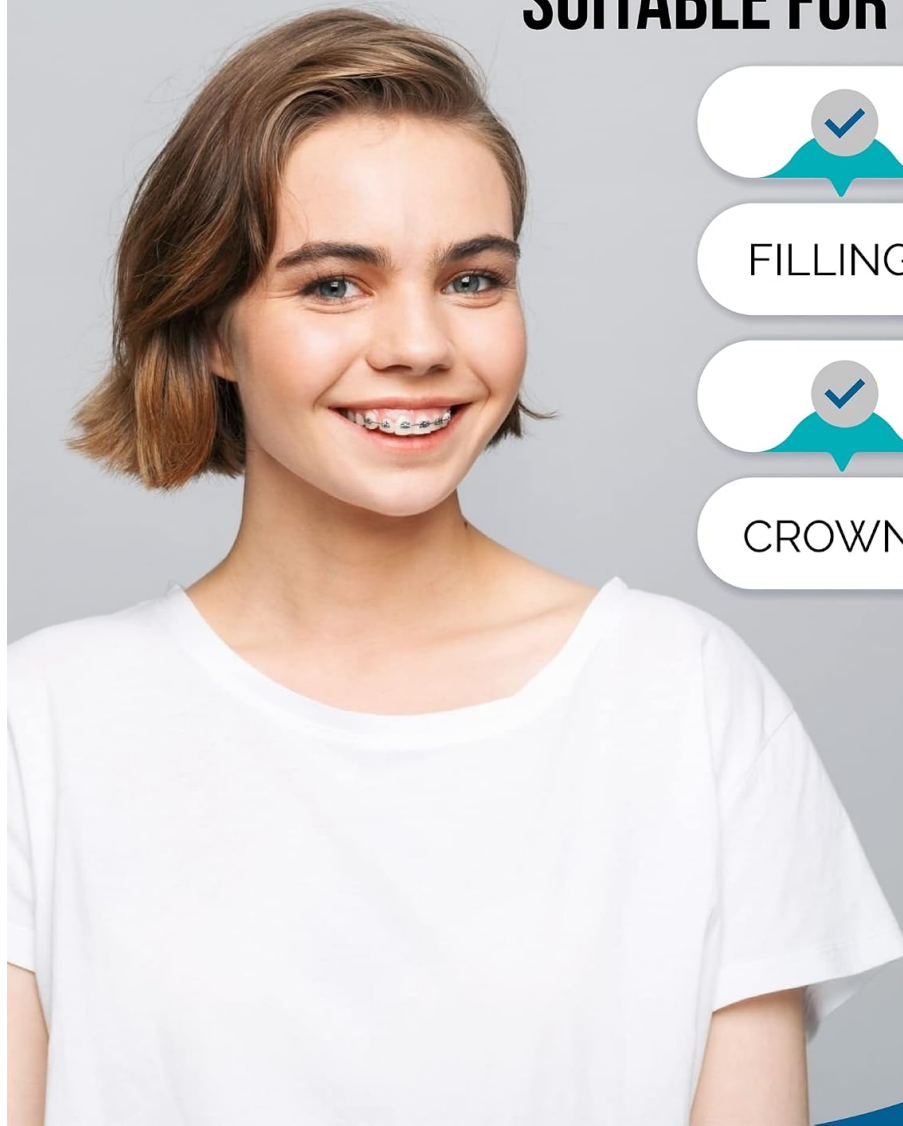
Philips Sonicare electric toothbrush's unique dynamic action gently and effectively reaches deep between teeth and along the gumline.



**Image Description:** A smiling woman holds the Philips Sonicare toothbrush, with an inset graphic illustrating the advanced sonic technology that removes up to 7 times more plaque than a manual toothbrush.

The Philips Sonicare's advanced sonic technology delivers up to 31,000 brush strokes per minute, creating dynamic fluid action that reaches deep between teeth and along the gumline for effective plaque removal. This technology is safe and gentle for various oral health needs, including use with braces, fillings, crowns, veneers, and can be used in the daily treatment of gum disease.

# SUITABLE FOR USE WITH:



BRACES

FILLINGS



VENEERS



CROWNS



**Image Description:** A young woman with braces smiles, with checkmarks next to text indicating that the Philips Sonicare toothbrush is suitable for use with braces, fillings, veneers, and crowns.

## MAINTENANCE

---

### Cleaning the Toothbrush

- After each use, rinse the brush head thoroughly under running water.
- Wipe the handle with a damp cloth. Do not immerse the handle in water.
- Clean the charging base periodically with a damp cloth. Ensure it is unplugged before cleaning.

### Replacing the Brush Head

For optimal performance and hygiene, it is recommended to replace your Philips Sonicare brush head every 3 months, or sooner if the bristles become splayed or worn. Genuine Philips Sonicare replacement brush heads are available for purchase.

## TROUBLESHOOTING

---

Problem	Possible Cause	Solution
Toothbrush does not turn on.	Battery is depleted.	Place the toothbrush on the charger for at least 24 hours.
Toothbrush does not charge.	Charger not plugged in or faulty outlet.	Ensure the charger is securely plugged into a working electrical outlet. Try a different outlet.
Reduced brushing power.	Low battery or worn brush head.	Recharge the toothbrush. Replace the brush head if it is old or splayed.
Excessive vibration or noise.	Brush head not properly attached.	Remove and reattach the brush head, ensuring it clicks firmly into place.

## SPECIFICATIONS

---

**Brand:** PHILIPS

**Model Number:** Philips148

**Power Source:** Battery Powered

**Special Feature:** Brushing Timer (SmartTimer, QuadPacer)

**Item Firmness Description:** Soft

**Age Range (Description):** Adult

**Package Dimensions:** 9.37 x 6.77 x 2.64 inches

**Item Weight:** 1.17 Pounds

**Manufacturer:** Philips

## WARRANTY AND SUPPORT

---

Your Philips Sonicare Electric Toothbrush EssentialClean is covered by a manufacturer's warranty. Please refer to the warranty card included in your product packaging for specific terms and conditions.

For further assistance, product registration, or to purchase accessories, please visit the official Philips website or contact Philips customer support. You can also find more information on the [Philips Brand Store on Amazon](#).