

## CC1101 Wireless Module

# CC1101 Wireless Module with SMA Antenna User Manual

Model: CC1101 Wireless Module

## INTRODUCTION

---

This manual provides comprehensive instructions for the Generic CC1101 Wireless Module with SMA Antenna. This module is a 433MHz wireless transceiver designed for various electronic experiments and integration with platforms like Arduino. It offers reliable digital transmission and receiving capabilities for a wide range of applications.

## PRODUCT OVERVIEW

---

The CC1101 Wireless Module is a compact and efficient radio frequency (RF) module. It features the CC1101 transceiver chip, an SMA connector for the external antenna, and pin headers for easy integration with microcontrollers. The module operates at 433MHz, making it suitable for short-range wireless communication.

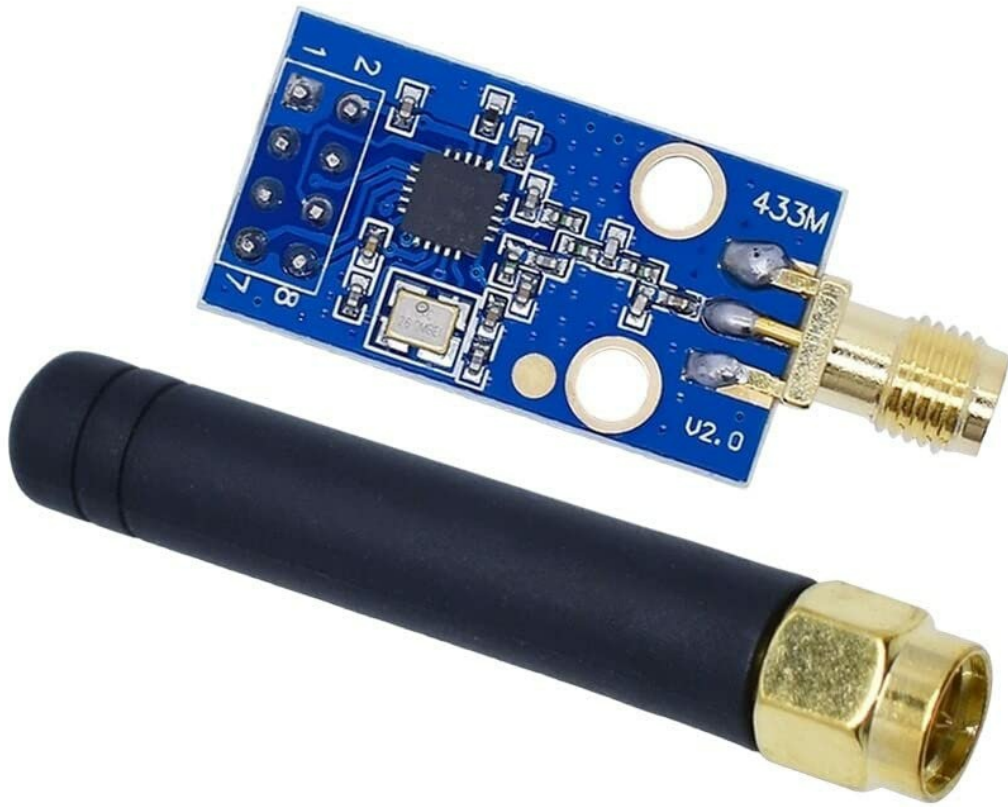


Figure 1: Front view of the CC1101 Wireless Module with the SMA antenna detached. The blue PCB shows the CC1101 chip, various passive components, and pin headers for connection.

## Industrial-grade CC1101 wireless module

- ✓ NRF905/SI4432
- ✓ 433M digital transmission and receiving

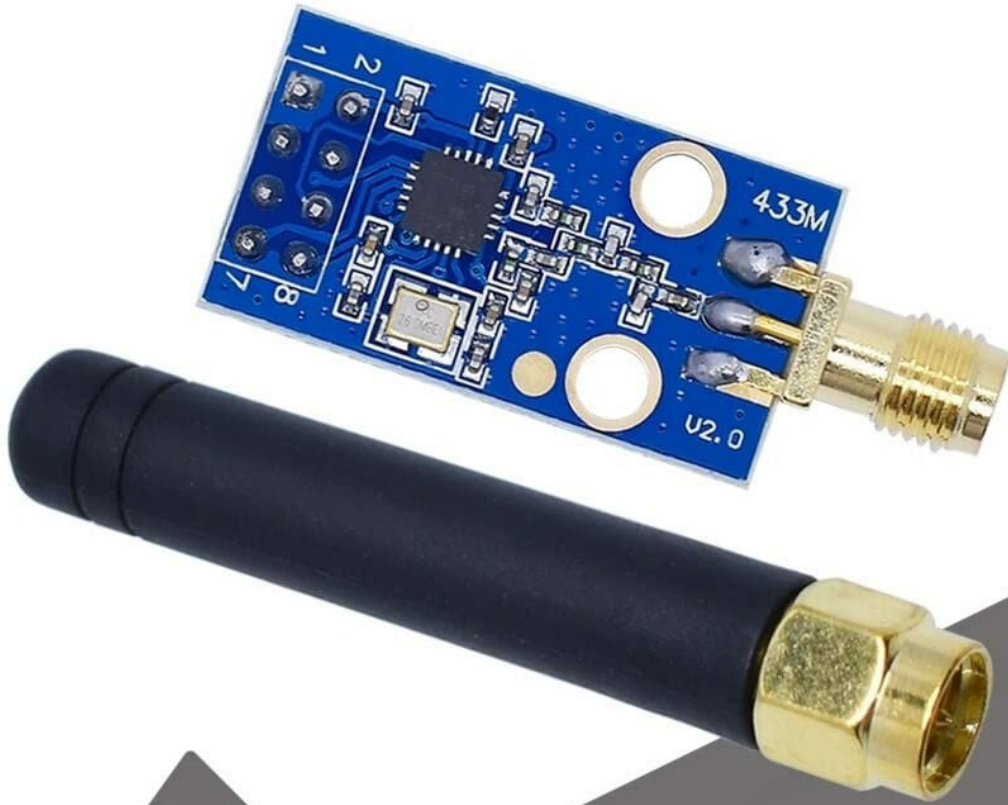


Figure 2: The CC1101 Wireless Module highlighting its industrial-grade quality and compatibility with NRF905/SI4432 protocols, emphasizing its 433MHz digital transmission and receiving capabilities.



Figure 3: An angled view of the CC1101 Wireless Module and its accompanying SMA antenna, showing the gold-plated SMA connector on the module and the base of the antenna.



Figure 4: Another angled perspective of the CC1101 Wireless Module and the SMA antenna, providing a clear view of the module's pin headers and the antenna's connection point.

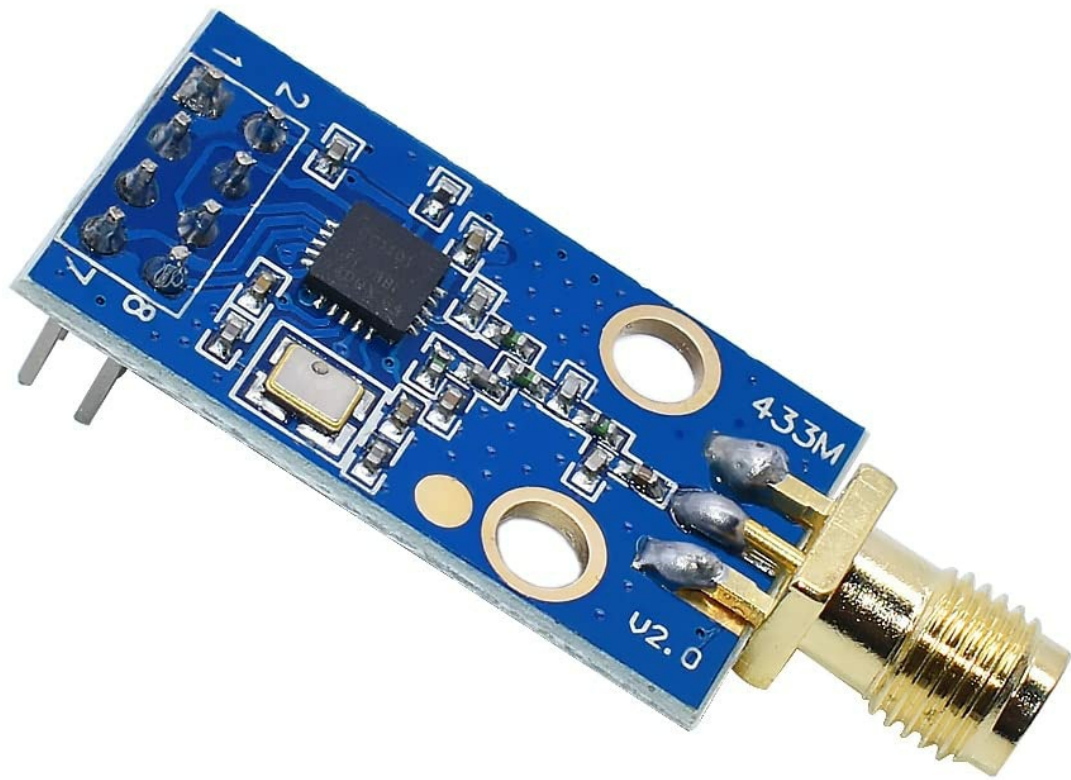


Figure 5: The CC1101 Wireless Module with the SMA antenna attached, demonstrating how the antenna connects to the module's SMA port.

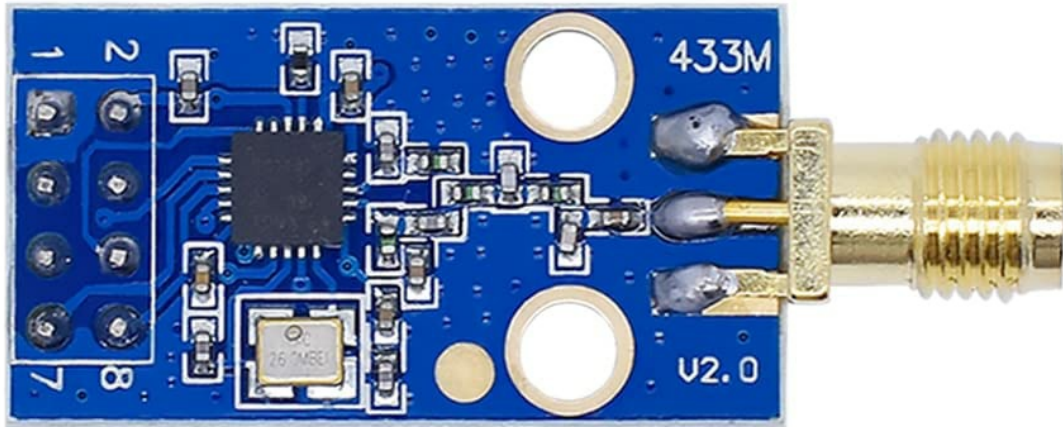


Figure 6: A top-down view of the CC1101 Wireless Module, clearly showing the layout of the components on the blue circuit board, including the CC1101 chip and the 433M frequency marking.

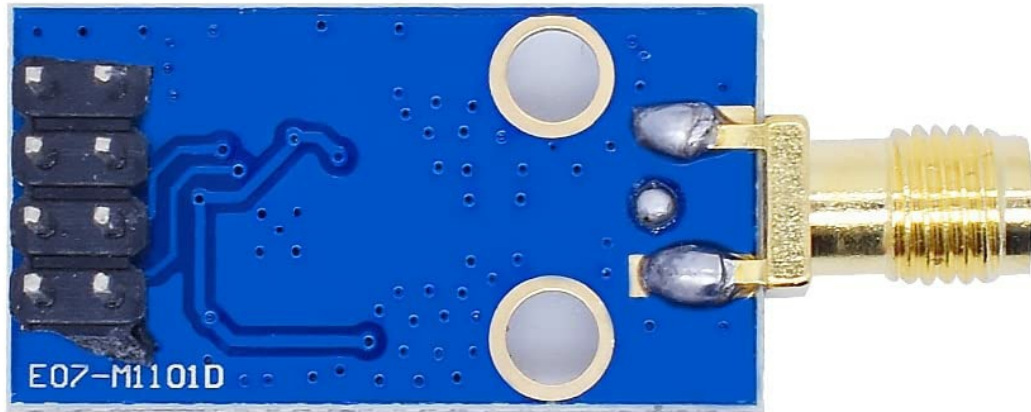


Figure 7: The bottom view of the CC1101 Wireless Module, revealing the solder points and the 'E07-M1101D' model identifier printed on the PCB.

## SPECIFICATIONS

Feature	Description
Operating Temperature	-40°C to +85°C
Supply Voltage	1.8 V to 3.6 V
Dissipation Power	1.8 V to 3.6 V (typical operating range)
Antenna Frequency	433MHz
Number of Channels	1

Color	Blue
Application	Electronic experiment, wireless communication
Manufacturer	VITECH ST

## SETUP

---

Before using the CC1101 Wireless Module, ensure you have a compatible microcontroller (e.g., Arduino) and appropriate wiring. The module typically communicates via SPI (Serial Peripheral Interface).

### Pinout (Common Configuration)

- **VCC:** Power supply (1.8V - 3.6V)
- **GND:** Ground
- **CSN:** Chip Select (SPI)
- **SCK:** Serial Clock (SPI)
- **MOSI:** Master Out Slave In (SPI)
- **MISO:** Master In Slave Out (SPI)
- **GDO0/GDO2:** General Purpose Digital Output (configurable for various functions like packet received, sync word detected, etc.)

### Connection Steps

1. **Attach Antenna:** Carefully screw the SMA antenna onto the module's SMA connector. Ensure it is finger-tight but do not overtighten.
2. **Power Connection:** Connect the VCC pin of the module to your microcontroller's 3.3V output (or a regulated 1.8V-3.6V supply). Connect the GND pin to the microcontroller's ground.
3. **SPI Connection:** Connect the CSN, SCK, MOSI, and MISO pins of the module to the corresponding SPI pins on your microcontroller. Refer to your microcontroller's documentation for specific SPI pin assignments.
4. **GDO Pins:** Connect GDO0 (and optionally GDO2) to digital input pins on your microcontroller. These pins provide interrupt signals for events like data reception.
5. **Software Setup:** Install the necessary libraries for CC1101 communication on your microcontroller's IDE (e.g., Arduino IDE). Many open-source libraries are available for CC1101.

## OPERATING INSTRUCTIONS

---

Operating the CC1101 module involves programming your microcontroller to configure the chip's registers and handle data transmission and reception. The general process includes:

1. **Initialization:** After power-up, initialize the CC1101 chip by writing configuration values to its internal registers. This includes setting frequency, data rate, modulation type, power output, and packet format.

2. **Calibration:** The CC1101 requires calibration for optimal performance. This is typically handled by the library or by issuing specific commands.
3. **Transmit Mode:** To send data, load the data into the CC1101's transmit FIFO buffer. Then, command the chip to enter transmit mode. The GDO pin can signal when transmission is complete.
4. **Receive Mode:** To receive data, command the chip to enter receive mode. The GDO pin will typically signal when a packet has been received. Read the received data from the receive FIFO buffer.
5. **Error Handling:** Implement checks for CRC errors or other packet integrity issues as part of your communication protocol.

Refer to the specific CC1101 library documentation and examples for detailed programming guidance.

## MAINTENANCE

---

The CC1101 Wireless Module is a robust electronic component and requires minimal maintenance. Follow these guidelines to ensure its longevity:

- **Handle with Care:** Avoid dropping the module or subjecting it to excessive physical shock.
- **Static Electricity:** Always handle the module in an ESD-safe environment to prevent damage from static discharge.
- **Environmental Conditions:** Operate and store the module within its specified temperature range (-40°C to +85°C) and avoid high humidity or corrosive environments.
- **Cleanliness:** Keep the module free from dust and debris. If cleaning is necessary, use a soft, dry brush or compressed air. Do not use liquid cleaners.
- **Antenna Connection:** Ensure the SMA antenna is securely connected. A loose antenna can degrade performance.

## TROUBLESHOOTING

---

If you encounter issues with your CC1101 Wireless Module, consider the following troubleshooting steps:

- **No Communication:**
  - Verify all wiring connections (VCC, GND, SPI pins) are correct and secure.
  - Check the power supply voltage to ensure it is within the 1.8V-3.6V range.
  - Ensure the antenna is properly attached.
  - Confirm that the CC1101 library is correctly installed and initialized in your code.
  - Check for common SPI issues: incorrect CSN pin, SCK/MOSI/MISO swapped.
- **Poor Range/Signal:**
  - Ensure both transmitting and receiving modules are using the same frequency and data rate settings.
  - Check for environmental interference (e.g., other 433MHz devices, large metal objects).
  - Verify antenna orientation and placement.
  - Increase transmit power settings in your code (if applicable and within legal limits).

- **Module Not Responding:**

- Perform a power cycle (disconnect and reconnect power).
- Check for short circuits or physical damage to the module.
- Ensure your microcontroller's firmware is not stuck or crashing.

## WARRANTY AND SUPPORT

---

This product is manufactured by VITECH ST. For technical support, detailed datasheets, or warranty inquiries, please contact the manufacturer or your point of purchase. Always refer to the official documentation for the CC1101 chip for in-depth technical specifications and programming guides.