

## Yaheetech 613812 White

# Yaheetech Large Bathroom Floor Cabinet Instruction Manual

Model: 613812 White

## 1. PRODUCT OVERVIEW

The Yaheetech Large Bathroom Floor Cabinet is a versatile and freestanding storage solution designed to enhance organization in various rooms such as bathrooms, living rooms, kitchens, and hallways. This cabinet features a combination of four drawers and a single door cabinet, providing ample space for diverse storage needs. Its white finish, vertical line detailing on door panels, and concave openings offer a blend of classic and contemporary styling, making it suitable for a wide range of home decors.



Figure 1: Front view of the Yaheetech Large Bathroom Floor Cabinet.



Figure 2: Detailed dimensions of the cabinet (26" L x 14" W x 35.5" H).

## 2. SAFETY INFORMATION

- **Do not put heavy objects:** Ensure the cabinet's load capacity is not exceeded to prevent damage or instability.
- **Anti-toppling fittings:** Always fix the cabinet to the wall using the provided anti-toppling fittings before use to prevent accidental tipping, especially in households with children or pets.
- **Assembly:** Follow all assembly instructions carefully. Improper assembly can lead to instability and potential hazards.
- **Placement:** Place the cabinet on a flat, stable, and level surface.

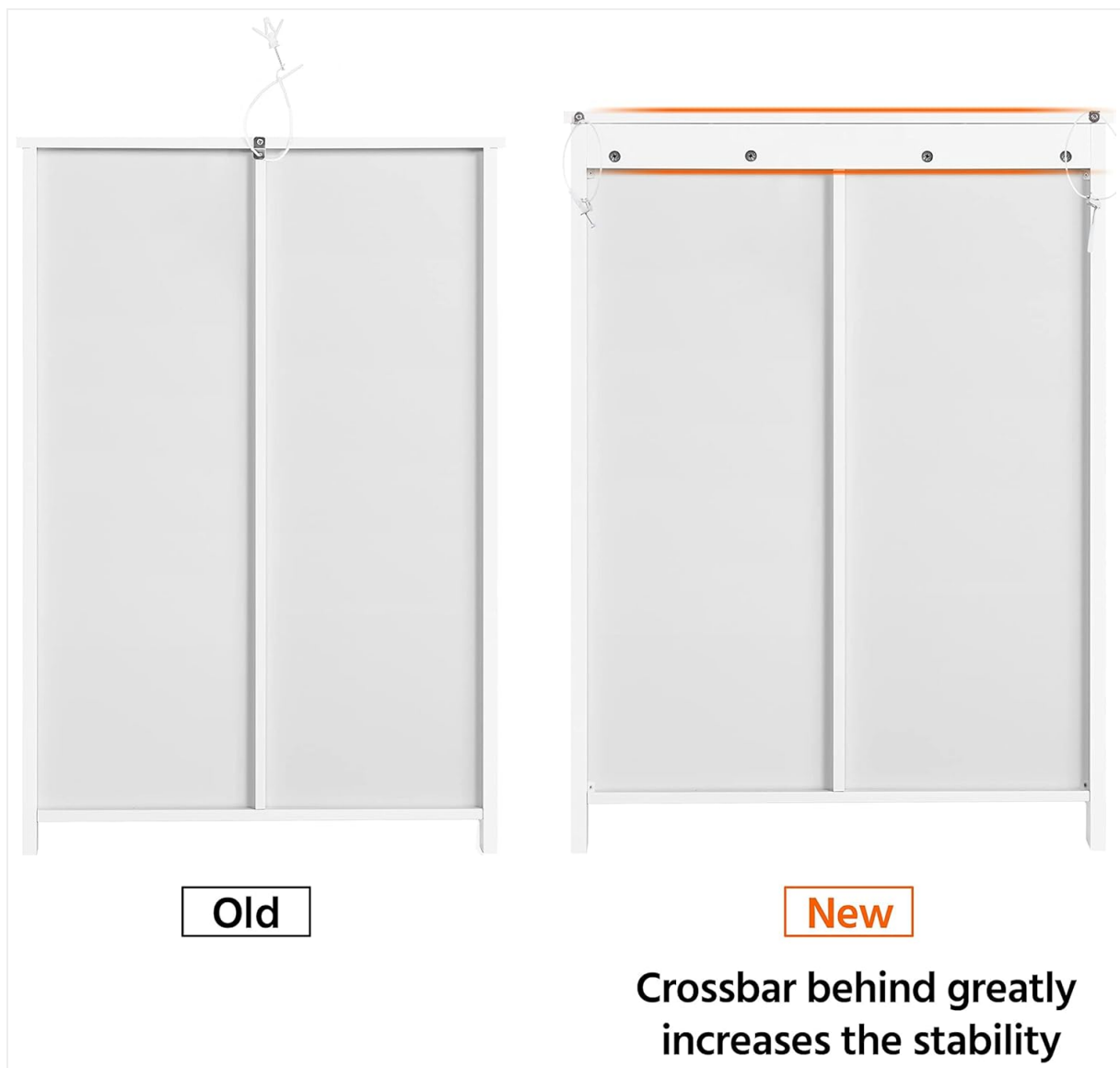


Figure 3: Illustration of the anti-toppling wall attachment for enhanced safety.

### 3. ASSEMBLY INSTRUCTIONS

This cabinet is designed for straightforward assembly. Please follow these steps carefully. It is recommended to have a hand screwdriver for assembly. Ensure all parts are present before beginning.

#### 3.1. Unpacking and Parts Identification

Carefully unpack all components from the box. Verify that all parts and hardware listed in the instruction manual are present and undamaged. Lay out all pieces on a clean, soft surface to prevent scratches.

#### 3.2. Step-by-Step Assembly

1. **Assemble the Base:** Begin by connecting the base panels according to the provided diagrams. Ensure all cam locks and dowels are securely fastened.
2. **Attach Side Panels:** Securely attach the side panels to the assembled base. Pay attention to the orientation of the pre-drilled holes for shelves and drawer slides.
3. **Install Back Panel:** Slide or screw the back panel into place. Note that newer models feature a crossbar behind the back panel for increased stability.



Figure 4: Comparison of old and new back panel designs, highlighting enhanced stability with a crossbar.

4. **Assemble Drawers:** Construct the four drawers. Each drawer features a slightly concave space on the front panel for easy handling. Ensure drawer stops are installed to prevent accidental falling off the slides.



Figure 5: Close-up of the drawer stop mechanism, preventing drawers from sliding out completely.

5. **Insert Shelves:** Place the shelves into the cabinet. The cabinet includes two shelves, with one being

adjustable to three optional heights, and the lower one fixed.

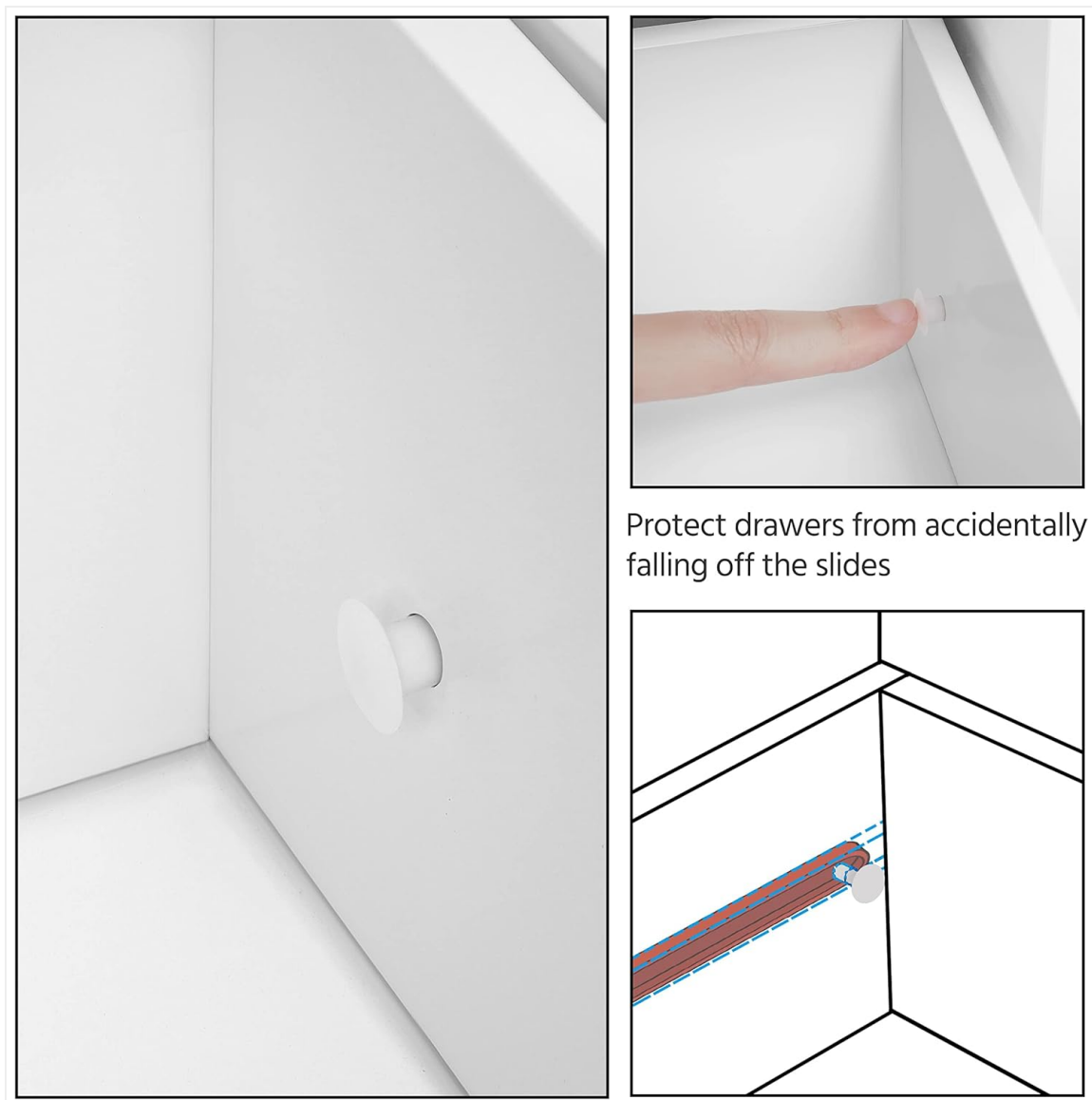


Figure 6: Illustration of the adjustable shelf with multiple height options.

6. **Attach Cabinet Door:** Install the single cabinet door using the provided durable hinges. The door is equipped with a magnetic device for easy opening and closing, and features a round knob.



Figure 7: Overview of key features: P2 MDF board, arch drawer opening, magnetic door, metal hinges, and silver knob.

7. **Final Touches:** Once assembled, ensure all connections are tight and the cabinet is stable. Attach the anti-toppling fittings to the wall as per the safety instructions.

## 4. PRODUCT FEATURES & USAGE

- **All-matching Design:** A white finish blends classic and contemporary styling, vertical lines decorated on door panels, and concave openings to make it more design-oriented and suitable for any home style.
- **Solid Structure:** This free-standing cabinet has a solid MDF structure with a high load capacity (tabletop: 35 kg/77.2 lb; drawer: 4 kg/8.8 lb; shelf: 10 kg/22 lb), meeting your basic storage requirements. You can display vases, photos, and incense on the table to decorate your warm room.
- **Selected Materials & Sturdy Construction:** Crafted of green P2-compliant MDF and metal hardware, this floor storage cabinet comes with a solid structure and excellent workmanship to meet your pursuit of quality. The surface is waterproof, scratch resistant, and easy to clean.
- **Easy Opening / Closing:** The cabinet door is equipped with a magnetic device for easy opening and closing. The accompanying hinges are durable, and the door panel has a round knob. Also, each drawer has a slightly concave space on the front panel for easy handling and beauty.



Figure 8: The cabinet offers ample storage, suitable for various household items in different settings.

## 5. CARE AND MAINTENANCE

- **Cleaning:** Wipe the surface with a soft, damp cloth. Avoid using harsh chemicals or abrasive cleaners that could damage the finish.
- **Spills:** Promptly wipe up any spills to prevent water damage to the MDF material.
- **Avoid Direct Sunlight:** Prolonged exposure to direct sunlight may cause fading or discoloration.
- **Regular Checks:** Periodically check all screws and fittings to ensure they remain tight. Re-tighten if necessary.

## 6. SPECIFICATIONS

Attribute	Detail
Brand	Yaheetech
Model Number	613812 White



Color	White
Product Dimensions	14"D x 26"W x 35.5"H
Material	Engineered Wood (P2-compliant MDF)
Mounting Type	Freestanding
Number of Drawers	4
Number of Shelves	2 (1 adjustable)
Weight Limit (Tabletop)	35 kg / 77.2 lb
Weight Limit (Drawer)	4 kg / 8.8 lb
Weight Limit (Shelf)	10 kg / 22 lb
Item Weight	43.8 pounds
Assembly Required	Yes





## 7. TROUBLESHOOTING

- **Wobbly Cabinet:** Ensure all screws and cam locks are fully tightened. Verify that the cabinet is placed on a level surface. Re-check assembly steps, especially for the back panel and base.
- **Drawers Not Sliding Smoothly:** Check that the drawer slides are correctly aligned and installed. Ensure no debris is obstructing the tracks. Verify that the drawers are not overloaded.
- **Door Not Closing Properly:** Inspect hinges for proper alignment and tightness. Ensure the magnetic closure is correctly positioned and functional.
- **Missing Parts:** If any parts are missing, please contact Yaheetech customer support with your purchase details.

## 8. WARRANTY AND SUPPORT

For warranty information, product support, or to order replacement parts, please refer to the contact information provided on your purchase receipt or visit the official Yaheetech website. Keep your purchase receipt as proof of purchase for any warranty claims.

### Related Documents

<div><div>Yaheetech</div><div>613812</div><div></div><div><p>1. Please read this instruction manual carefully before assembling the unit.</p><p>2. The back of the cabinet is pre-drilled with holes for easy installation.</p><p>3. The cabinet is made of high-quality solid wood and is very sturdy.</p><p>4. The cabinet is suitable for use in the kitchen, bathroom, or living room.</p><p>5. The cabinet is available in two colors: white and black.</p><p>6. The cabinet is easy to clean with a damp cloth.</p><p>7. The cabinet is covered by a 3-year warranty.</p></div></div>	<p><a href="#">Yaheetech 613812 Storage Cabinet Assembly Instructions</a></p> <p>Comprehensive guide for assembling the Yaheetech 613812 storage cabinet. Includes a detailed parts list, step-by-step assembly instructions, and essential wall anchoring safety information.</p>
<div><div>Yaheetech</div><div>611798</div><div></div><div><p>1. Please read this instruction manual carefully before assembling the unit.</p><p>2. The back of the cabinet is pre-drilled with holes for easy installation.</p><p>3. The cabinet is made of high-quality solid wood and is very sturdy.</p><p>4. The cabinet is suitable for use in the bathroom.</p><p>5. The cabinet is available in two colors: white and black.</p><p>6. The cabinet is easy to clean with a damp cloth.</p><p>7. The cabinet is covered by a 3-year warranty.</p></div></div>	<p><a href="#">Yaheetech Over The Toilet Storage Cabinet Installation Manual</a></p> <p>Comprehensive installation guide for the Yaheetech Over The Toilet Storage Cabinet, including multilingual instructions, parts list, and wall anchoring procedures.</p>
<div><div>Yaheetech</div><div>610824</div><div></div><div><p>1. Please read this instruction manual carefully before assembling the unit.</p><p>2. The back of the cabinet is pre-drilled with holes for easy installation.</p><p>3. The cabinet is made of high-quality solid wood and is very sturdy.</p><p>4. The cabinet is suitable for use in the bathroom.</p><p>5. The cabinet is available in two colors: white and black.</p><p>6. The cabinet is easy to clean with a damp cloth.</p><p>7. The cabinet is covered by a 3-year warranty.</p></div></div>	<p><a href="#">Yaheetech Over The Toilet Storage Cabinet Assembly Instructions</a></p> <p>This document provides detailed assembly instructions for the Yaheetech Over The Toilet Storage Cabinet (Model #610824). It guides users through the setup of this tall bathroom organizer, featuring adjustable shelves and double doors, to efficiently utilize bathroom space.</p>
<div><div>Yaheetech</div><div>612501</div><div></div><div><p>1. Please read this instruction manual carefully before assembling the unit.</p><p>2. The back of the cabinet is pre-drilled with holes for easy installation.</p><p>3. The cabinet is made of high-quality solid wood and is very sturdy.</p><p>4. The cabinet is suitable for use in the kitchen, bathroom, or living room.</p><p>5. The cabinet is available in two colors: white and black.</p><p>6. The cabinet is easy to clean with a damp cloth.</p><p>7. The cabinet is covered by a 3-year warranty.</p></div></div>	<p><a href="#">Yaheetech 612501 Assembly Instructions: Wooden Storage Cabinet</a></p> <p>Step-by-step assembly instructions for the Yaheetech 612501 wooden storage cabinet. Includes parts list, hardware details, assembly steps, and wall anchoring guide for home organization.</p>