

## ECCO ED3080AW

# ECCO ED3080AW LED Stop-Tail-Turn-Reverse Warning Light User Manual

Model: ED3080AW

## 1. INTRODUCTION

---

This manual provides instructions for the installation, operation, and maintenance of the ECCO ED3080AW LED Stop-Tail-Turn-Reverse Warning Light. This low-profile, multifunctional light is designed to enhance visibility on commercial and public safety vehicles by integrating stop, turn, tail, and reverse functions into a single unit. It features high-output LEDs for durability and low power consumption.

## 2. SAFETY INFORMATION

---

Always observe the following safety precautions during installation and operation:

- **Electrical Safety:** Disconnect power from the vehicle's battery before beginning any electrical work. Ensure all wiring connections are secure and properly insulated to prevent short circuits.
- **Mounting:** Securely mount the light to a stable surface to prevent detachment during vehicle operation. Refer to local regulations for proper mounting locations and visibility requirements.
- **Voltage:** This device operates on 12-24 VDC. Connecting it to an incorrect voltage supply may damage the unit and void the warranty.
- **Waterproof Rating:** The unit features an ultrasonically sealed housing for water resistance. However, avoid submerging the unit or directing high-pressure water jets directly at it during cleaning.

## 3. PACKAGE CONTENTS

---

Verify that all components are present:

- 1 x ECCO ED3080AW LED Stop-Tail-Turn-Reverse Warning Light
- 1 x Instruction Manual

## 4. PRODUCT OVERVIEW

---

The ECCO ED3080AW is a compact, rectangular LED light designed for multi-functional use on commercial vehicles. It combines several essential lighting functions into one unit, reducing the need for multiple separate lights.

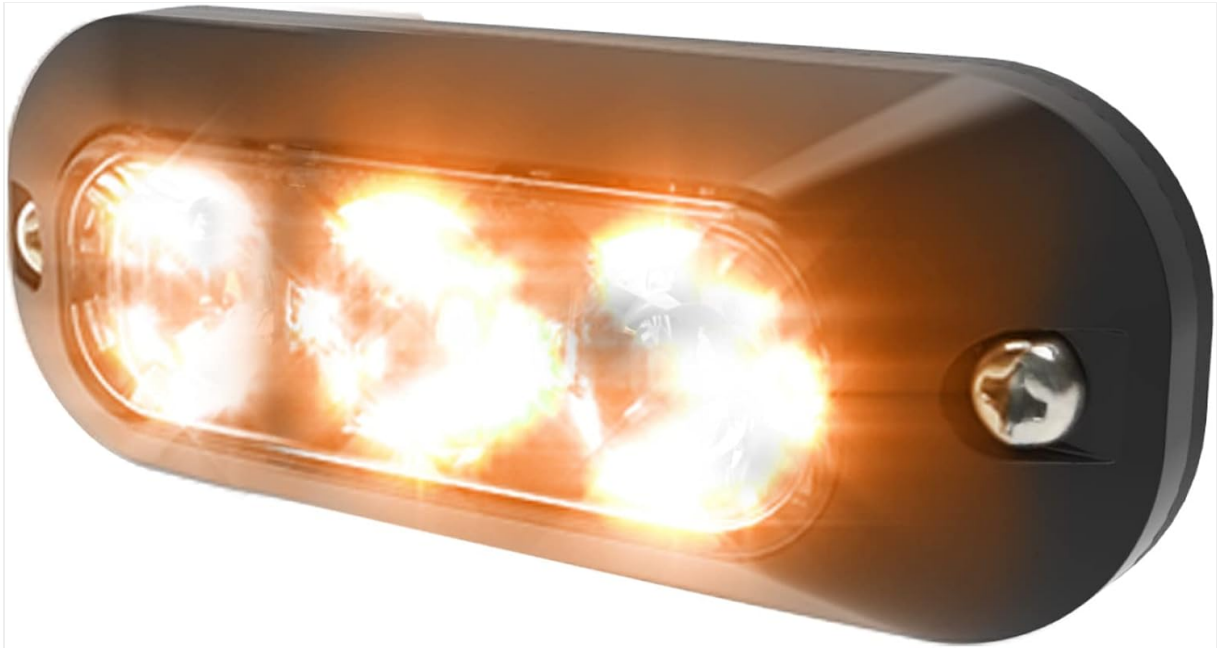


Image 1: Front view of the ECCO ED3080AW LED Stop-Tail-Turn-Reverse Warning Light, showing its amber and white LEDs.

### Key Features:

- **Voltage:** 12-24 VDC compatibility.
- **Functions:** Clear center for reverse/warning, red perimeter for stop-turn-tail.
- **LED Technology:** High output LEDs ensure low maintenance, long life, and low current consumption.
- **Durability:** Ultrasonically sealed housing and vibration/shock resistant construction.
- **Mounting:** Designed for surface mount installation.

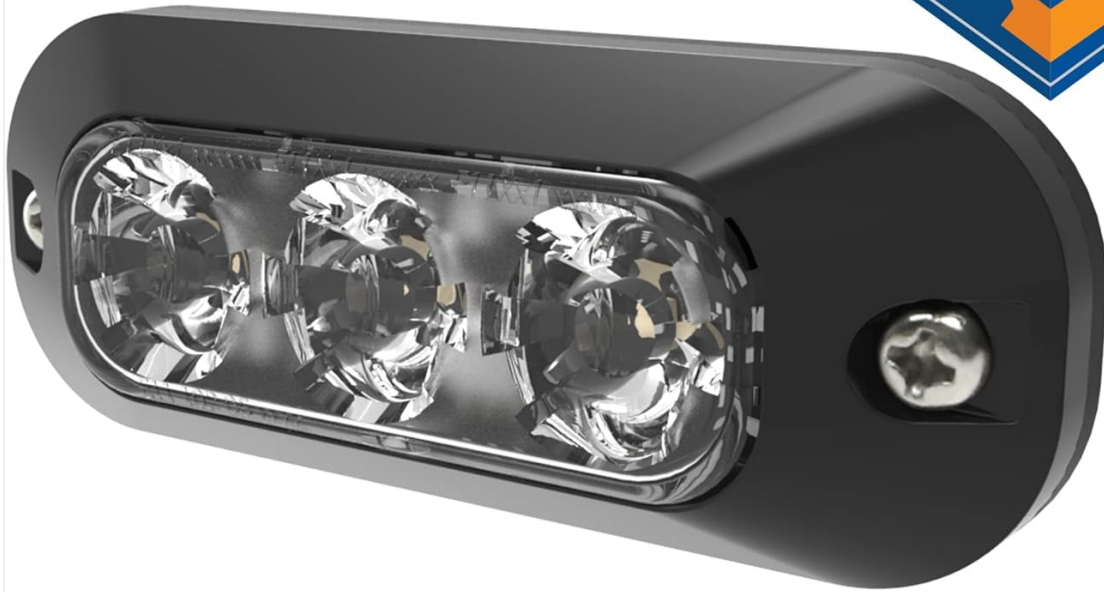


Image 2: ECCO ED3080AW LED light, highlighting its robust design and 5-year warranty.

## 5. SETUP AND INSTALLATION

---

The ED3080AW is designed for surface mount installation. Proper wiring is crucial for correct functionality.

### 5.1 Mounting

1. Choose a flat, stable surface on the vehicle that allows for optimal visibility and adheres to local regulations for warning lights.
2. Mark the drilling points for the mounting screws based on the light's dimensions (6.4"L x 1.3"W x 2"H).
3. Drill pilot holes if necessary, ensuring not to damage any underlying vehicle components or wiring.
4. Secure the light using appropriate fasteners. Ensure a tight fit to prevent vibration and moisture ingress.

### 5.2 Wiring

The light features a connector for ground, stop/turn, and tail functions. Refer to the vehicle's wiring diagram and the light's specific wiring instructions for correct connections.

- **Ground:** Connect the ground wire from the light to a suitable chassis ground point on the vehicle.
- **Stop/Turn:** Connect the stop/turn wire from the light to the vehicle's stop/turn signal circuit.
- **Tail:** Connect the tail light wire from the light to the vehicle's tail light circuit.
- **Reverse/Warning:** The clear center LEDs function as reverse and warning lights. Connect the corresponding wire to the vehicle's reverse light circuit and/or a dedicated warning light switch, depending on desired operation.

*Note: Professional installation is recommended for complex wiring setups.*

## 6. OPERATING INSTRUCTIONS

---

Once properly installed and wired, the ECCO ED3080AW light will operate in conjunction with the vehicle's electrical system.

- **Tail Light Function:** When the vehicle's tail lights are activated, the red perimeter LEDs will illuminate steadily.
- **Stop Light Function:** When the vehicle's brakes are applied, the red perimeter LEDs will illuminate brightly.
- **Turn Signal Function:** When the vehicle's turn signal is activated, the red perimeter LEDs on the corresponding side will flash.
- **Reverse Light Function:** When the vehicle is shifted into reverse, the clear center LEDs will illuminate.
- **Warning Light Function:** If wired to a separate switch, the clear center LEDs can be activated to provide warning light patterns. The ED3000 series offers various flash patterns for warning applications. Consult the specific wiring diagram for pattern selection if applicable to your model.

## 7. MAINTENANCE

---

The ECCO ED3080AW LED light is designed for minimal maintenance.

- **Cleaning:** Clean the lens periodically with a soft cloth and mild soap and water to ensure maximum light output. Avoid abrasive cleaners or solvents.
- **Inspection:** Periodically check mounting hardware for tightness and wiring connections for corrosion or damage.
- **LED Longevity:** The high-output LEDs are designed for a long operational life, typically requiring no replacement during the product's lifespan.

## 8. TROUBLESHOOTING

---

If the light is not functioning correctly, perform the following basic checks:

Problem	Possible Cause	Solution
Light does not illuminate	No power supply; Loose or incorrect wiring; Blown fuse	Check vehicle's power supply; Verify all wiring connections are secure and correct; Check and replace vehicle's fuse if necessary.
Incorrect function (e.g., only tail light works)	Incorrect wiring for specific functions	Review wiring diagram and ensure correct wires are connected to the corresponding vehicle circuits (stop/turn, tail, reverse/warning).

Problem	Possible Cause	Solution
Light flickers or is dim	Poor electrical connection; Insufficient voltage	Check all connections for corrosion or looseness; Verify vehicle's voltage supply is within 12-24 VDC range.

If troubleshooting steps do not resolve the issue, contact ECCO customer support.

## 9. SPECIFICATIONS

Feature	Specification
Model Number	ED3080AW
Brand	ECCO
Voltage	12-24 VDC
Light Source Type	Light Emitting Diode (LED)
Functions	Stop, Turn, Tail, Reverse, Warning
Color	Amber/White LEDs (Clear center, Red perimeter)
Mounting Type	Surface Mount
Material	Plastic
Shape	Rectangular
Dimensions (L x W x H)	6.4" x 1.3" x 2"
Weight	9.6 ounces
Manufacturer	ECCO Safety Group
UPC	758379118832

## 10. WARRANTY AND SUPPORT

### 10.1 Warranty Information

The ECCO ED3080AW LED Stop-Tail-Turn-Reverse Warning Light comes with a **5-year manufacturer's warranty**. This warranty covers defects in materials and workmanship under normal use. Please retain your proof of purchase for warranty claims.

### 10.2 Customer Support

For technical assistance, warranty claims, or further information, please contact ECCO customer support through their official website or the retailer where the product was purchased.