

OLIGHT Open Glow

OLIGHT O'Pen Glow EDC Pen Light User Manual

Model: Open Glow | Brand: OLIGHT

1. INTRODUCTION

The OLIGHT O'Pen Glow is a versatile 4-in-1 EDC (Everyday Carry) tool, combining a high-quality writing pen with a powerful LED flashlight and a green laser pointer. Designed for convenience and utility, it is suitable for various tasks from daily writing to outdoor adventures and professional presentations.

Key features include:

- Integrated pen, pen clip LED light, pen tip light, and green beam.
- Adjustable brightness for the pen clip LED light (5 to 120 lumens).
- Convenient magnetic charging base.
- Slim body proportion and lightweight design for comfortable grip and portability.
- Class 1 green beam with output 0.39mW, safe for human and animal interaction.



Figure 1: The OLIGHT O'Pen Glow pen light in its charging base.

2. PACKAGE CONTENTS

Please verify that all items listed below are included in your package:

- O'Pen Glow x 1
- Charging Base x 1
- Blue Refill x 1
- Magnetic badge x 1
- Type-C Charging Cable x 1

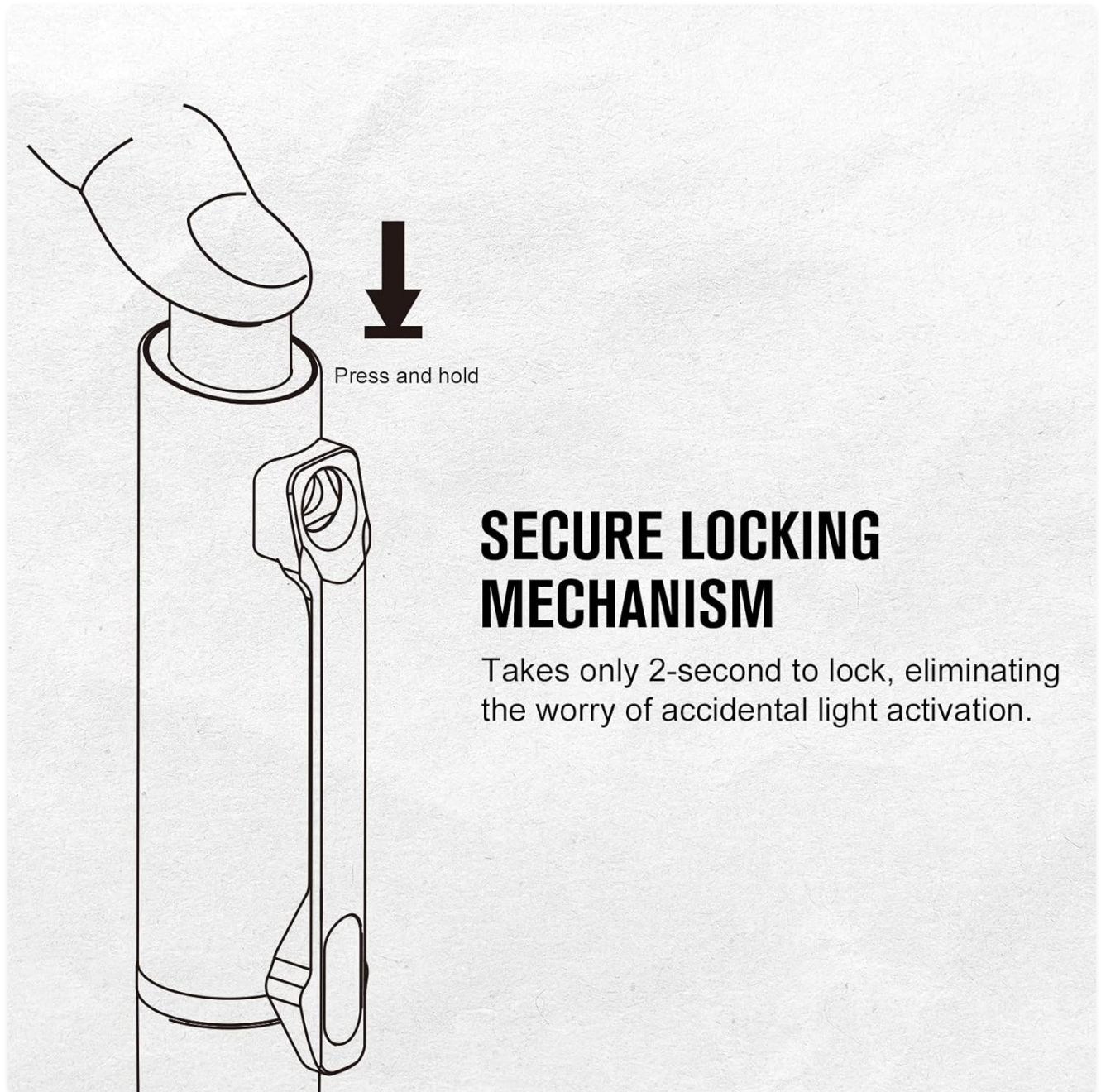


Figure 2: All components included in the O'Pen Glow package.

3. SETUP AND CHARGING

3.1 Initial Setup

Before first use, ensure the O'Pen Glow is fully charged. The pen comes with a newly designed charging base for easy and convenient charging.

3.2 Charging Instructions

1. Connect the Type-C charging cable to the charging base and a power source (e.g., USB wall adapter, computer USB port).
2. Insert the pen tip into the charging base. Ensure the pen tip is retracted while charging.
3. The indicator light on the charging base will show the charging status. Refer to the product's specific charging indicator behavior for full details (e.g., red for charging, green for full).
4. A full charge typically takes approximately 55 minutes.

The included magnetic badge can be used to secure the charging base to a surface, preventing the penlight from falling over during charging.



Figure 3: Charging the O'Pen Glow using its dedicated charging base.

4. OPERATING INSTRUCTIONS

The O'Pen Glow offers four primary functions: a writing pen, a pen tip light, a pen clip light, and a green laser beam.

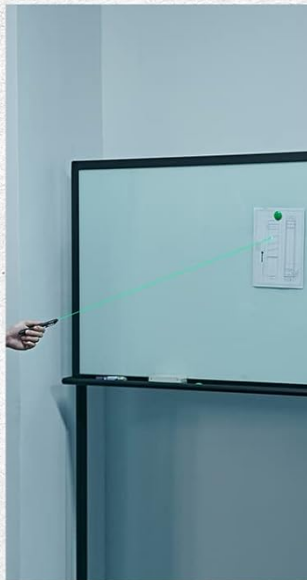
4-IN-1 MULTIFUNCTIONAL PENLIGHT

Featuring 4-in-1 multiple functions,
the light is your EDC companion and ideal for a variety of uses.



Pen tip light

Nighttime reading and writing



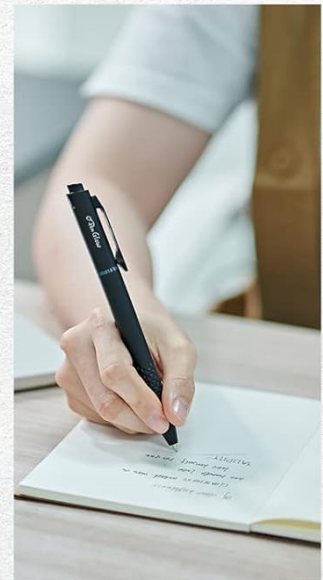
Green beam

Office presentations



Pen clip light

Handling daily tasks



Pen

Writing and taking notes

Figure 4: The 4-in-1 multifunctional design of the O'Pen Glow.

4.1 Using the Pen

To extend or retract the pen tip, use the bolt action mechanism located on the side of the pen. Push the bolt forward to extend the pen tip for writing, and pull it back to retract.

STYLISH TEXTURE FOR EXTENDED WRITING COMFORT

The new texture provides a more non-slip and comfortable grip, ideal for anyone tackling extended writing.



Figure 5: The textured body provides a comfortable and non-slip grip for extended writing.

4.2 Activating Lights (Pen Tip & Pen Clip)

The pen tip light and pen clip light are controlled by the tail switch. This design allows for easy access to illumination when needed.

- **Pen Tip Light:** This light illuminates your writing surface, ideal for nighttime reading or writing in low-light conditions.
- **Pen Clip Light:** This light can be adjusted from 5 to 120 lumens, providing versatile illumination for various tasks. It's useful for general lighting or hands-free operation when clipped to a pocket or surface.

SEPARABLE DESIGN

The unique separable pen clip design easily improves your nighttime writing tasks.



Figure 6: Controls for accessing the pen tip, green beam, and pen clip/tip lights.

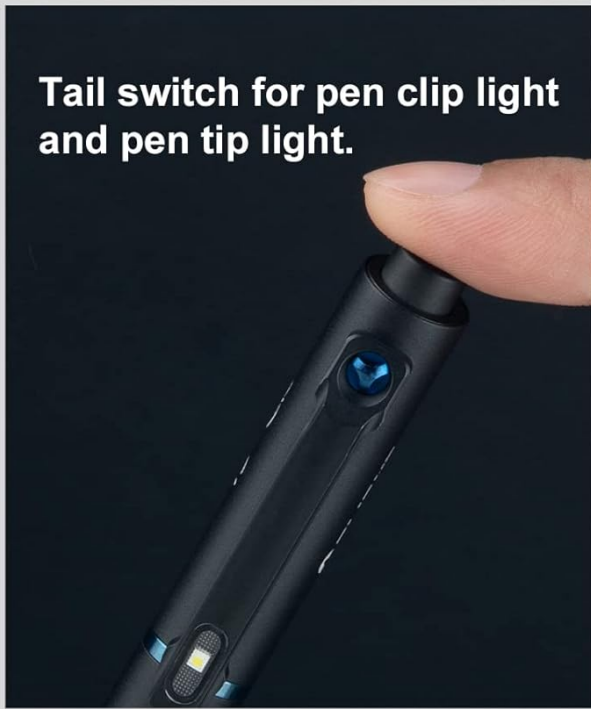
4.3 Using the Green Beam

The green beam is activated by sliding up and holding the bolt action mechanism. This feature is useful for presentations, pointing out objects, or even as an interactive toy for pets.

Safety Note: The output of the green beam is 0.39mW, classified as Class 1, and is within the safe range, posing no harm to humans or animals under normal use conditions.

EFFORTLESSLY ACCESS EACH LIGHT SOURCE

Tail switch for pen clip light and pen tip light.



**Bolt action to access or recess the pen tip.
Slide up & hold to activate green beam.**



Figure 7: The green beam can be used for interactive play with pets.

4.4 Secure Locking Mechanism

The O'Pen Glow features a secure locking mechanism for the pen clip light. To lock the light and prevent accidental activation, press and hold the tail switch for approximately 2 seconds. This ensures the light does not turn on unintentionally, conserving battery life.

GREEN BEAM WORKS AS A PET INTERACTIVE TOY

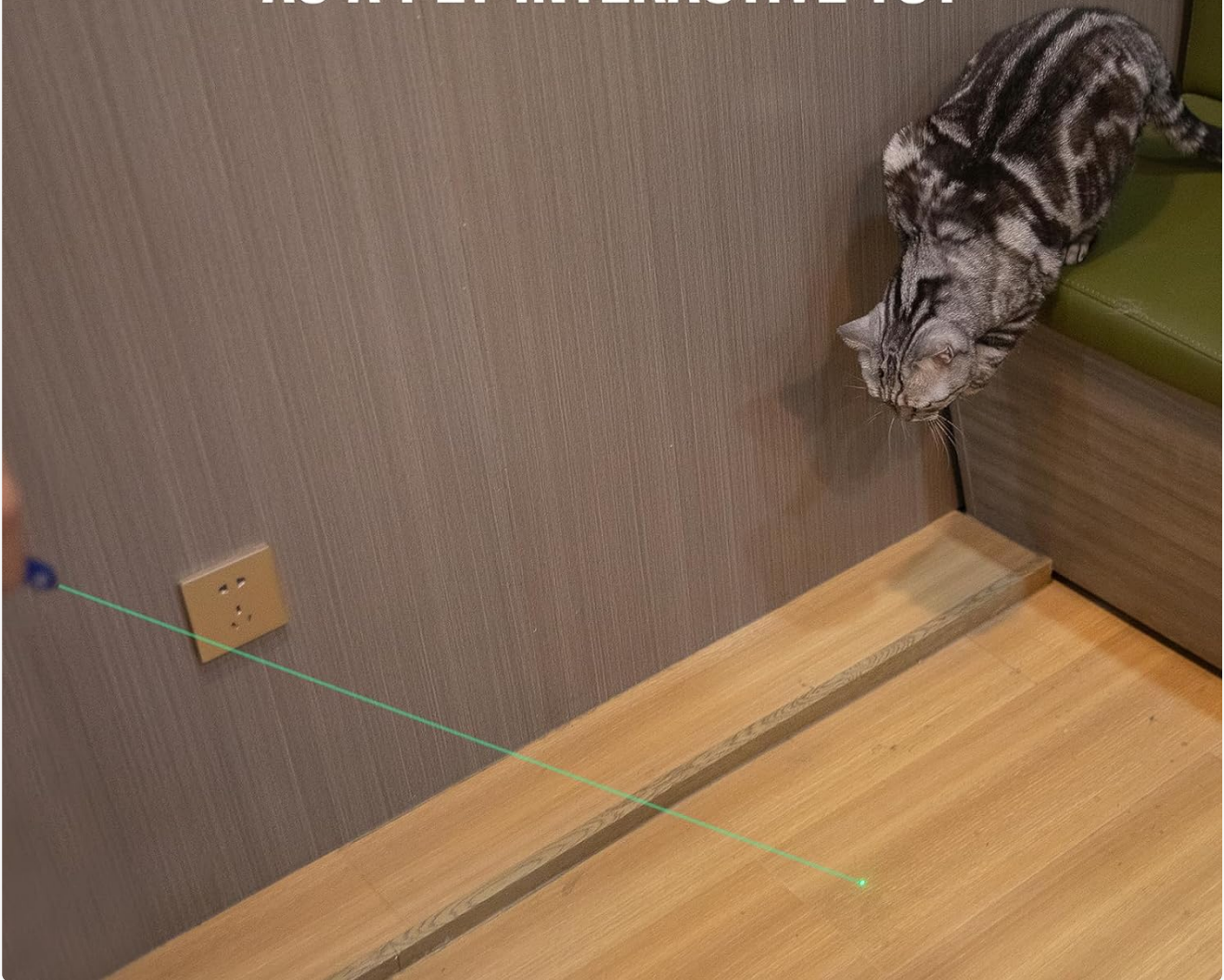






Figure 8: Secure locking mechanism to prevent accidental light activation.

5. CARE AND MAINTENANCE

Proper care and maintenance will ensure the longevity and optimal performance of your O'Pen Glow.

- **Cleaning:** Wipe the pen with a soft, damp cloth to remove dust and dirt. Avoid using harsh chemicals or abrasive materials.
- **Storage:** Store the pen in a cool, dry place when not in use. Avoid extreme temperatures.
- **Refill Replacement:** The O'Pen Glow uses standard pen refills. To replace, unscrew the pen body and insert a new refill. A blue refill is included in the package.

OUTPUT

	High	Medium	Low	Moonlight	Pen tip LED light
	120-60 lumens	60 lumens	20 lumens	5 lumens	0.2 lumens
	14+21 minutes	45 minutes	110 minutes	5 hours	2.5 hours
	14 meters	10 meters	6 meters	2 meters	N/A
	48 cd	28 cd	10 cd	2.5 cd	N/A

* All data above are test results according to ANSI/NEMA FL 1-2009 standards.

Figure 9: The O'Pen Glow comes with an additional blue ink refill.

6. TROUBLESHOOTING

If you encounter issues with your O'Pen Glow, please refer to the following common problems and solutions:

Problem	Possible Cause	Solution
Light not turning on or flickering.	Low battery; secure locking mechanism engaged; loose connection.	Charge the pen fully; disengage the secure locking mechanism (press and hold tail switch for 2 seconds to unlock); ensure all parts are securely tightened.
Pen not writing smoothly.	Ink refill is empty or dried; pen tip not fully extended.	Replace the ink refill; ensure the bolt action mechanism is fully pushed forward.
Charging not initiating.	Pen not properly seated in the charging base; faulty cable or power source.	Ensure the pen is firmly inserted into the charging base with the tip retracted; try a different Type-C cable or power adapter.
Green beam not activating.	Bolt action not held in the correct position; low battery.	Ensure the bolt action is slid up and held; charge the pen fully.

7. TECHNICAL SPECIFICATIONS

Detailed specifications for the OLIGHT O'Pen Glow:

Feature	Specification
Brand	OLIGHT

Feature	Specification
Model	Open Glow
Special Feature	Portable, Rechargeable
Color	Black
Power Source	Battery Powered
Light Source Type	LED
Material	Aluminum
White Brightness	120 Lumens (Max)
Product Dimensions	0.5"D x 0.91"W x 6.1"H
Voltage	4.2 Volts
Light Path Distance	14 Meters (Max)
Battery Cell Composition	Lithium Polymer
Item Weight	5.6 ounces
Number of Batteries	1 Lithium Polymer (included)
Water Resistance Level	Not Water Resistant
Runtime	Up to 5 hours (Moonlight mode)
Certifications	FDA, FCC



Figure 10: Detailed output specifications for various light modes.

8. WARRANTY AND SUPPORT

8.1 Warranty Information

The OLIGHT O'Pen Glow comes with a **Lifetime Warranty**. For specific terms and conditions, please refer to the official OLIGHT warranty policy or contact OLIGHT customer service.

EFFORTLESSLY ACCESS EACH LIGHT SOURCE

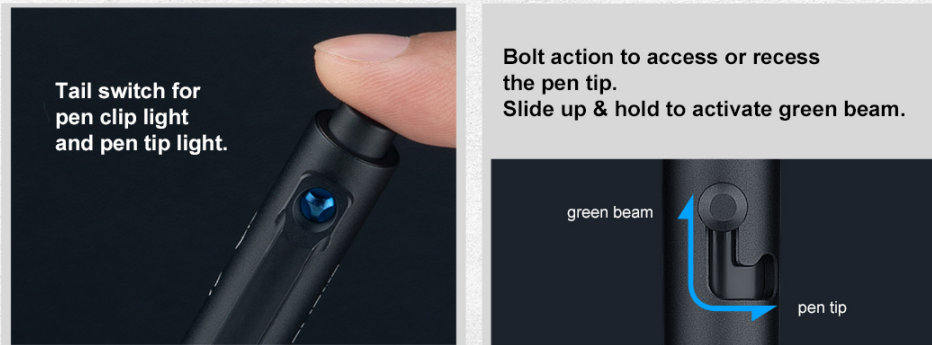


Figure 11: OLIGHT's commitment to quality, including a Lifetime Warranty.

8.2 Further Support

For additional information, detailed user guides, or customer support, please visit the official OLIGHT website or refer to the comprehensive User Manual PDF available online. A digital version of the user manual can be found at: [OLIGHT O'Pen Glow User Manual \(PDF\)](#).