



[Manuals.plus](#) /

> [SEWOSI](#) /

> SENWOSI THX-Alpha Dual-Channel UHF Wireless Microphone System User Manual

SEWOSI THX-Alpha

SEWOSI THX-Alpha Dual-Channel UHF Wireless Microphone System

USER MANUAL

Introduction

This manual provides comprehensive instructions for the setup, operation, maintenance, and troubleshooting of your SENWOSI THX-Alpha Dual-Channel UHF Wireless Microphone System. Please read this manual thoroughly before using the product to ensure optimal performance and longevity.



Image: The SENWOSI THX-Alpha wireless microphone system, featuring the receiver unit and two handheld microphones.

Box Contents

Verify that all items listed below are included in your package:

- 1 × Dual-Channel Wireless Metal Receiver
- 2 × UHF Handheld Microphones (includes 4 AA alkaline batteries)
- 2 × High-Gain Antennas
- 1 × 1/4" Audio Cable
- 1 × Power Adapter
- 2 × Anti-Rolling Rings
- 1 × User Manual

Note: The protective film on the receiver's display may contain key descriptions. Please remove this film before use. If white powder appears when tearing the film, it is normal.



Image: A visual representation of all components included in the SENWOSI THX-Alpha wireless microphone system package.

Product Overview

Receiver Unit

The receiver unit features a durable metal casing and an LCD display for monitoring operational status. It is equipped with controls for frequency adjustment, channel switching, and volume.

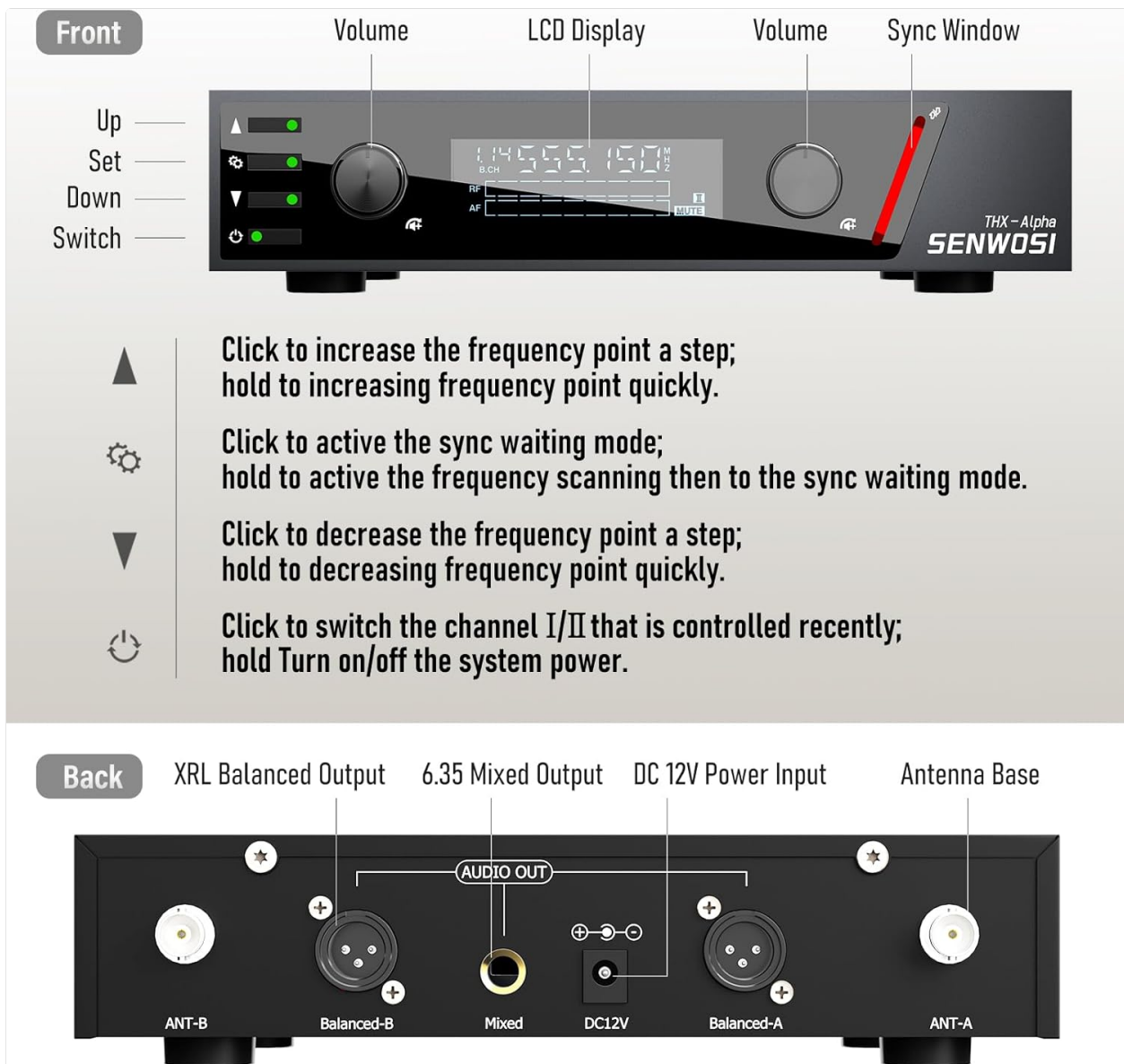


Image: Front view of the receiver unit, highlighting the LCD display, volume knobs, and control buttons.

Front Panel Controls:

- **Up Button (▲):** Short press to increase frequency, hold to increase quickly.
- **Set Button (Gear Icon):** Click to activate sync waiting mode, hold to activate frequency scanning then sync waiting mode.
- **Down Button (▼):** Short press to decrease frequency, hold to decrease quickly.
- **Switch Button (Power Icon):** Click to switch between Channel I/II, hold to turn the system power on/off.
- **Volume Knobs:** Adjusts the output volume for each channel.
- **LCD Display:** Shows frequency, channel, RF/AF levels, and other operational status.
- **Sync Window:** Infrared sensor for pairing microphones.

Rear Panel Connections:



FEATURES



Large Range
Quick Sync



Dual Colors
LED Indicators



Dual Channels
Switch to Control



High Sampling
Rate Audio



All Digital
Processors



Frequencies
Auto-Scanning

Image: Rear view of the receiver unit, showing the various audio output ports and antenna bases.

- **XLR Balanced Output (A & B):** Professional balanced audio outputs for each channel.
- **6.35mm Mixed Output:** Unbalanced audio output combining both channels.
- **DC 12V Power Input:** Connects to the included power adapter.
- **Antenna Bases (A & B):** Connect the high-gain antennas for optimal signal reception.

Handheld Microphones

The system includes two UHF handheld microphones with a durable metal body and an integrated LCD screen for real-time status monitoring. Each microphone operates on 2 AA alkaline batteries.



/ Wireless Distance

400 Ft



521.25 - 550.95 MHz
551.25 - 580.95 MHz

Image: Detailed view of a handheld microphone, showing the antenna, power switch, LCD screen, alloy tube, and microphone capsule.

Microphone Components:

- **Antenna:** Integrated for wireless signal transmission.
- **Power Switch:** Controls microphone power.
- **LCD Screen:** Displays battery level and current frequency.
- **Alloy Microphone Tube:** Durable metal construction.
- **Microphone Capsule:** High-quality dynamic micro-core with cardioid directivity for clear sound capture.

Setup

1. **Install Antennas:** Screw the two high-gain antennas onto the Antenna Bases (ANT-A and ANT-B) on the rear of the receiver unit. Ensure they are securely tightened and positioned vertically for optimal reception.
2. **Power the Receiver:** Connect the included power adapter to the DC 12V Power Input on the receiver's rear panel, then plug the adapter into a power outlet.
3. **Install Microphone Batteries:** Unscrew the bottom part of each handheld microphone. Insert two AA alkaline batteries into each microphone, observing the correct polarity (+/-). Screw the bottom part back on securely.
4. **Initial Power On:** Press and hold the power button on the receiver to turn it on. The LCD display will

illuminate. Turn on each microphone by sliding its power switch.

Operating Instructions

Frequency Scanning and IR Synchronization

The system utilizes automatic scanning and infrared synchronization for easy pairing and interference-free operation.

1. **Power On:** Ensure both the receiver and microphones are powered on.
2. **Activate Sync Mode on Receiver:** On the receiver, press the **Set** button (gear icon) to activate the sync waiting mode. The display will indicate it is ready for synchronization. For automatic frequency scanning, **hold** the Set button until the scanning process begins, then release. The receiver will find an available frequency and enter sync waiting mode.
3. **Align for IR Sync:** Hold the microphone with its IR window (usually near the bottom of the handle) facing the Sync Window on the receiver's front panel. Ensure a clear line of sight and a distance of a few inches.
4. **Complete Sync:** The receiver and microphone will automatically synchronize. The microphone's LCD will display the new frequency, and the receiver's RF indicator for that channel will light up, confirming a successful connection. Repeat for the second microphone.

Manual Frequency Adjustment

If manual adjustment is required, use the Up (▲) and Down (▼) buttons on the receiver to cycle through available frequencies for the selected channel. After selecting a frequency, perform IR synchronization as described above.

Channel Switching

To switch between controlling Channel I and Channel II on the receiver, short press the **Switch** button (power icon). The active channel will be indicated on the LCD.

Volume Control

Adjust the individual volume knobs on the receiver for each microphone channel (Channel I and Channel II) to achieve the desired audio output level.

Connection Methods

The SENWOSI THX-Alpha system offers flexible connection options to various audio equipment.

Connecting via 6.35mm Mixed Output

This method combines both microphone signals into a single output, suitable for active speakers or power amplifiers connected to passive speakers.

Connection Method

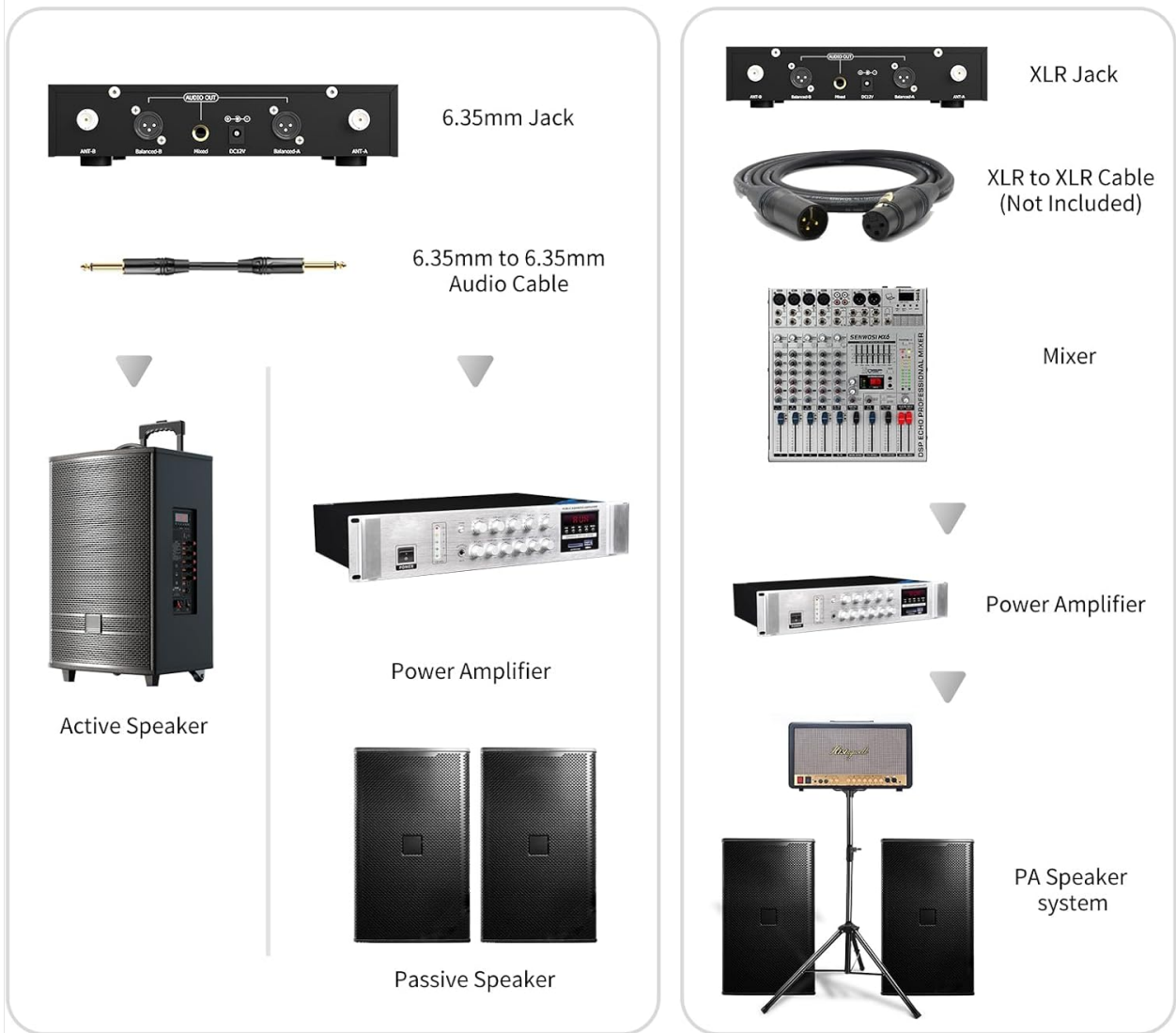


Image: Connection diagram illustrating how to connect the receiver's 6.35mm mixed output to an active speaker or a power amplifier with passive speakers.

1. Connect one end of the included 1/4" audio cable to the **6.35mm Mixed Output** on the receiver's rear panel.
2. Connect the other end of the 1/4" audio cable to the input of your active speaker or power amplifier.
3. If using a power amplifier, connect your passive speakers to the amplifier's output.

Connecting via XLR Balanced Outputs

For professional setups requiring individual channel control and balanced audio, use the XLR outputs with an audio mixer.

Note: XLR to XLR cables are not included and must be purchased separately.

XRL Audio Cable Connection Method



Image: Connection diagram illustrating how to connect the receiver's XLR outputs to an audio mixer, then to a power amplifier and PA speaker system.

1. Connect XLR cables (not included) from the **XLR Balanced Output A** and **XLR Balanced Output B** on the receiver to two separate input channels on your audio mixer.
2. Connect the output of your audio mixer to a power amplifier.
3. Connect your PA speaker system to the power amplifier's output.

Maintenance

- **Cleaning:** Use a soft, dry cloth to clean the receiver and microphones. Avoid using harsh chemicals or abrasive materials.
- **Battery Replacement:** Replace microphone batteries when the low battery indicator appears on the microphone's LCD. Always use fresh AA alkaline batteries.
- **Storage:** When not in use for extended periods, remove batteries from the microphones and store the system in a cool, dry place away from direct sunlight and extreme temperatures.
- **Antenna Care:** Handle antennas carefully to prevent bending or damage. Ensure they are properly secured during operation.

Troubleshooting

Problem	Possible Cause	Solution
No sound from microphones	Microphones or receiver not powered on; Batteries low/dead; Microphones not synced; Volume too low; Audio cable disconnected.	Ensure all units are powered on. Replace microphone batteries. Perform IR synchronization. Increase receiver volume. Check audio cable connections.
Interference or static noise	Operating too close to other wireless devices; Frequency interference; Obstructions between mic and receiver.	Perform automatic frequency scanning and re-sync. Move receiver away from other electronic devices. Ensure clear line of sight between microphones and receiver.
Short wireless range	Antennas not properly installed/positioned; Environmental obstructions; Low microphone battery.	Ensure antennas are securely attached and vertical. Minimize obstructions. Replace microphone batteries.
Microphone LCD not displaying	Microphone not powered on; Dead batteries.	Turn on microphone. Replace batteries.

Specifications

Feature	Detail
Model Name	THX-Alpha
Brand	SEWOSI
Microphone Form Factor	Handheld
Number of Channels	2
Channel 1 Frequency Range	521.25 – 550.95 MHz (100 channels)
Channel 2 Frequency Range	551.25 – 580.95 MHz (100 channels)
Wireless Range	Up to 328–400 ft (line-of-sight)
Frequency Synthesis Technology	Phase-Locked Loop (PLL)
Microphone Power Source	2 x AA alkaline batteries (per microphone)
Microphone Battery Life	8-12 hours (continuous operation)
Receiver Power Source	Corded Electric (DC 12V)
Material	Metal (receiver and microphones)
Polar Pattern	Unidirectional (Cardioid)
Frequency Response	20 KHz
Connectivity Technology	UHF, XLR
Connector Type	6.35 mm Jack, XLR
Compatible Devices	Audio Mixer, Karaoke Machine, PA System, Speaker, Voice Recorder
Receiver Dimensions (L x W x H)	8.27 x 3.35 x 1.97 inches (20.8 x 8.5 x 5 cm)
Microphone Length	10.23 inches (25.6 cm)
Item Weight	4.62 pounds (2.1 Kilograms)

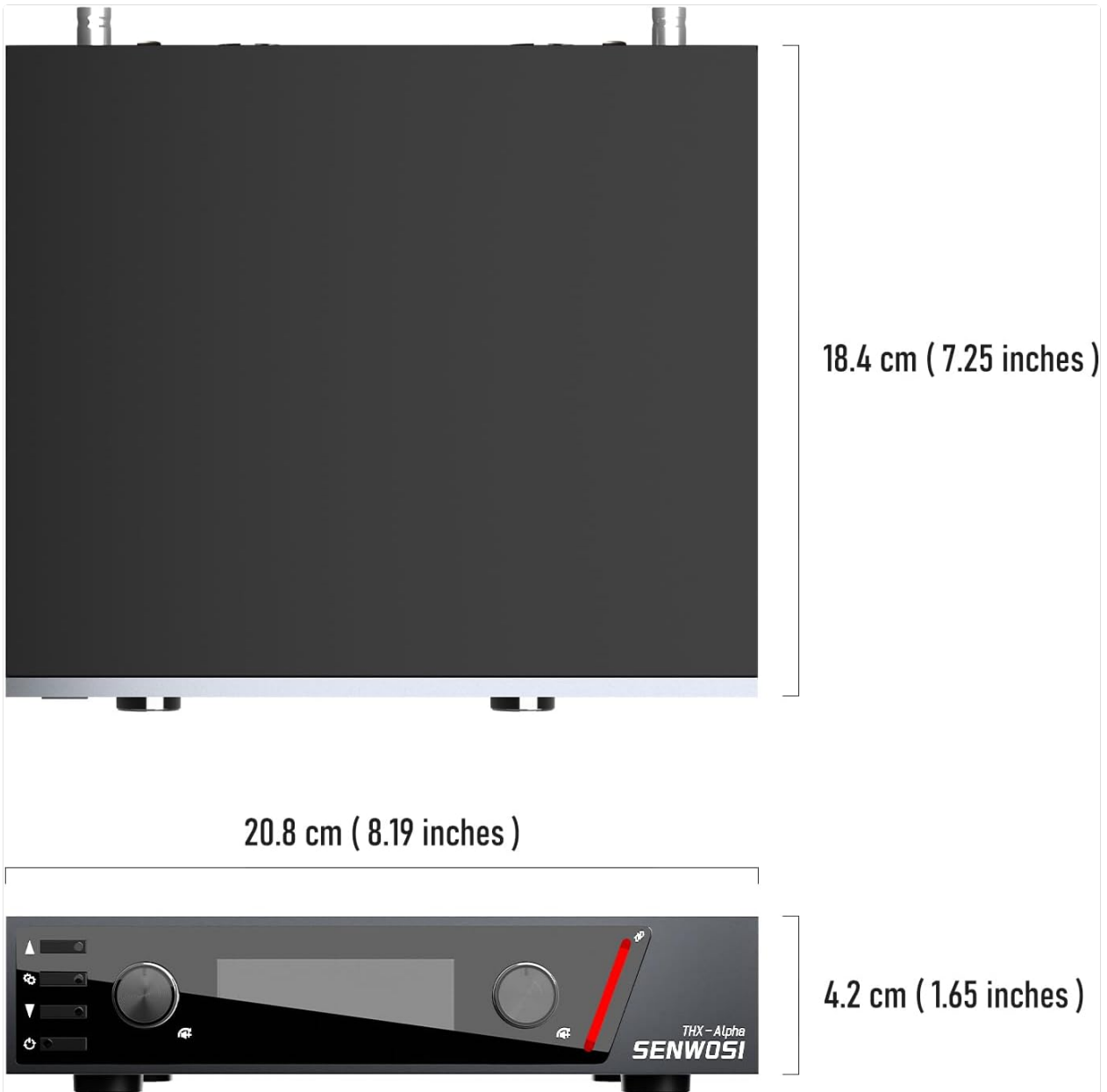


Image: Diagram illustrating the physical dimensions of the receiver unit and a handheld microphone.

Warranty & Support

SENWOSI brand products are backed by a **12-Month manufacturer guarantee**. If you encounter any issues or require assistance with troubleshooting or replacement parts, please contact SENWOSI customer service. Refer to your purchase documentation for specific contact information.