

CRUA CR320QB

CRUA 27-inch Curved White Monitor (Model CR320QB)

User Instruction Manual

INTRODUCTION

This manual provides essential information for the proper setup, operation, and maintenance of your CRUA 27-inch Curved White Monitor, Model CR320QB. Please read this manual thoroughly before using the product to ensure optimal performance and safety.

WHAT'S IN THE BOX

- CRUA 27 inch monitor white
- Base and Support
- User manual
- HDMI cable
- Power Adapter

SETUP

1. Assembling the Stand

Carefully remove the monitor and its components from the packaging. Attach the base to the support arm, then secure the assembled stand to the back of the monitor. Ensure all screws are tightened securely. Alternatively, the monitor supports 100x100mm VESA wall-mounted installation for practical space management. Refer to your VESA mount's instructions for installation.

2. Connecting Cables

Connect the provided HDMI cable from your computer or device to the HDMI port on the monitor. If using a VGA connection, connect a VGA cable to the VGA port. Plug the power adapter into the monitor's DC input and then into a power outlet.

DIMENSION

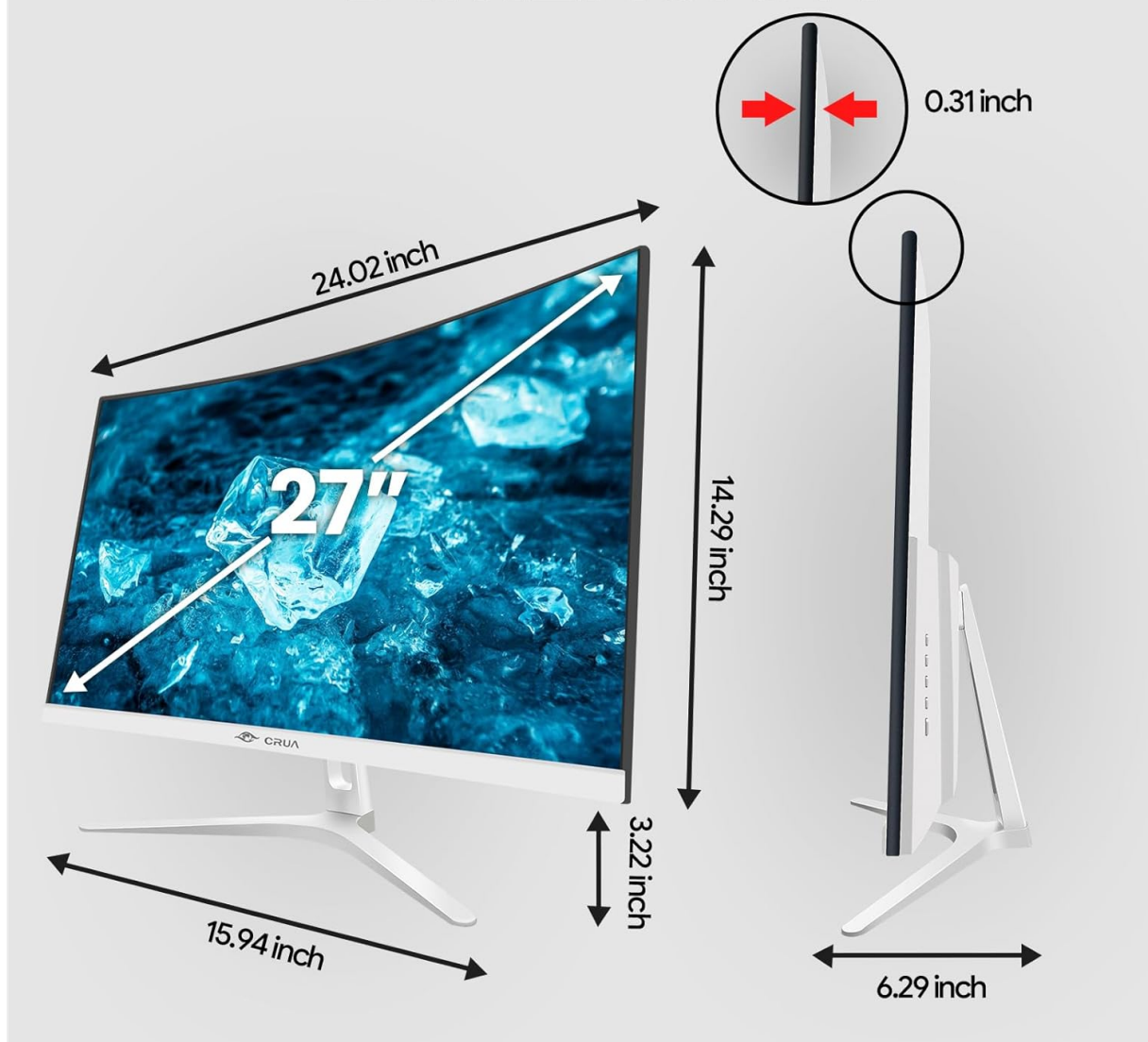


Image: This diagram illustrates how to connect various devices such as a laptop, PC, or game console to the monitor using HDMI and VGA ports. The power adapter connection is also shown.

3. Initial Power-On

Press the power button located on the back of the monitor to turn it on. The monitor should automatically detect the input signal. If not, you may need to manually select the input source using the OSD menu.

OPERATING THE MONITOR

On-Screen Display (OSD) Menu

The OSD menu allows you to adjust various display settings. Buttons for navigating the menu are typically located on the back or bottom edge of the monitor. Common settings include:

- **Brightness and Contrast:** Adjust the overall luminance and difference between light and dark areas.
- **Color Settings:** Modify color temperature, gamma, and color space (e.g., sRGB). The monitor offers 120% sRGB professional color gamut.
- **Input Source:** Manually select between HDMI and VGA inputs.
- **Picture Mode:** Choose from preset modes optimized for different content types (e.g., Standard, Game, Movie, Text).
- **Refresh Rate:** The monitor supports an ultra-fast 100Hz refresh rate for smoother visuals.

- **Blue Light Filter:** Activate this feature to reduce blue light emissions and minimize eye strain.
- **Flicker-Free Technology:** This monitor incorporates flicker-free technology to reduce screen flickering and enhance viewing comfort.



Image: This image highlights the monitor's capability to display pure and realistic colors, featuring 120% sRGB color gamut, a 3000:1 contrast ratio, and support for 16.7 million colors.

HIGH REFRESH RATE RESPOND QUICKLY

Newly upgraded refresh rate, effectively reduce the screen freeze and smear. each action step ahead of other players to others.

60HZ

100HZ

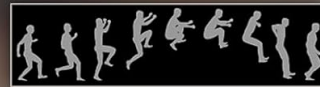


Image: This visual demonstrates the difference between a 60Hz and 100Hz refresh rate, showing significantly reduced motion blur and clearer images at 100Hz, which is beneficial for fast-paced content like gaming.

Curved Display Benefits

The 1800R curvature of this monitor provides an immersive viewing experience by surrounding your field of vision. This design helps reduce eye fatigue and discomfort, making it ideal for extended use in office or gaming environments.

IMMERSIVE VISUAL EXPERIENCE

creates a wider field of view, enhances depth perception,
and minimises peripheral distractions to draw you deeper in to your content

1800R



Image: This image visually represents the 1800R curvature, explaining how it creates a wider field of view, enhances depth perception, and minimizes peripheral distractions for a more immersive experience.

MAINTENANCE

To ensure the longevity and optimal performance of your monitor, follow these maintenance guidelines:

- **Cleaning the Screen:** Gently wipe the screen with a soft, lint-free cloth. For stubborn marks, lightly dampen the cloth with water or a screen-cleaning solution. Avoid using harsh chemicals or abrasive materials.
- **Cleaning the Casing:** Use a soft, dry cloth to clean the monitor's casing.
- **Ventilation:** Ensure the monitor's ventilation openings are not blocked to prevent overheating.
- **Power Off:** Always turn off the monitor and unplug it from the power outlet before cleaning or if it will not be used for an extended period.

TROUBLESHOOTING

If you encounter issues with your CRUA monitor, refer to the following common troubleshooting steps:

Problem	Possible Solution
---------	-------------------

Problem	Possible Solution
No image on screen	Ensure the power cable is securely connected and the monitor is turned on. Verify the video cable (HDMI/VGA) is properly connected to both the monitor and your device. Check if the correct input source is selected in the OSD menu.
Flickering or unstable image	Ensure the video cable is securely connected. Adjust the refresh rate settings on your computer to 100Hz. Test with a different video cable or port.
Colors appear incorrect or washed out	Adjust brightness, contrast, and color settings in the OSD menu. Ensure your device's display settings are configured correctly for the monitor.

If these steps do not resolve the issue, please contact CRUA customer support.

SPECIFICATIONS

Feature	Detail
Model Number	CR320QB
Screen Size	27 Inches
Resolution	1920 x 1080 Pixels (FHD 1080p)
Refresh Rate	100Hz
Panel Type	VA Panel
Curvature	1800R
Color Gamut	120% sRGB
Brightness	250 Candela (cd/m²)
Contrast Ratio	3000:1 (Static)
Aspect Ratio	16:9
Connectivity	HDMI 1.4, VGA
Wall Mount (VESA)	100x100mm
Product Dimensions	1.8 x 21.2 x 18.7 inches
Item Weight	10.26 pounds

WARRANTY AND SUPPORT

CRUA provides high-quality computer monitors and premium services. If you have any questions or encounter any issues, please feel free to contact us. We are committed to serving you wholeheartedly and solving all your problems.

For customer support, please refer to the contact information provided with your product packaging or visit the official CRUA website.

