

Manuals+

[Q & A](#) | [Deep Search](#) | [Upload](#)

manuals.plus /

- › [Desview](#) /
- › [Desview R7III Camera Field Monitor User Manual](#)

Desview Desview-R7II

Desview R7III Camera Field Monitor User Manual

Model: Desview-R7II

INTRODUCTION

The Desview R7III Camera Field Monitor is a 7-inch IPS touch screen monitor designed for professional videography and photography. It features a Full HD 1920x1080 resolution, 2800 nits ultra-high brightness for outdoor visibility, and supports 4K60Hz HDMI input/output. This manual provides essential information for setting up, operating, and maintaining your monitor.

KEY FEATURES

- **7-inch IPS Touch Panel:** 1920x1080 Full HD resolution with 178-degree wide viewing angle.
- **2800 nits Ultra Brightness:** Ensures clear visibility even in bright sunlight.
- **4K60Hz HDMI 2.0:** Supports up to 3840x2160p@60Hz and 4096x2160p@60Hz input/output.
- **Advanced Monitoring Tools:** Includes Waveform, Histogram, Vectorscope, False Color, Peaking, Zebra, and more.
- **3D LUT Support:** Built-in 3D LUTs and custom LUT import via USB.
- **Flexible Power Solution:** Compatible with NP-F batteries and Type-C 5V/3A input.
- **Durable Design:** Features shock-proof rubber corners for drop protection.

WHAT'S IN THE BOX

Verify that all items are present in your package:

- Desview R7III Camera Monitor Body
- A to A HDMI Cable (x1)
- Micro HDMI Cable (x1)
- D-tap Cable (x1)
- Monitor Mount (x1)

- Portable Bag
- Installation Tool
- U Disk (USB flash drive)
- Dust Cloth
- User Manual



Image: All items included in the Desview R7III Camera Field Monitor package.

SETUP GUIDE

1. Monitor Interface Overview

Familiarize yourself with the various ports and buttons on your Desview R7III monitor.

Interface Description



Image: Detailed view of the Desview R7III monitor's interfaces and dimensions.

2. Powering the Monitor

The R7III monitor offers multiple power options:

- **NP-F Batteries:** Insert one or two compatible NP-F series batteries into the battery slots on the back of the monitor. The monitor can display the battery percentage.
- **Type-C Power:** Connect a 5V/3A power source to the Type-C port on the side.
- **DC Input:** Use the provided D-tap cable or a standard DC power adapter with the DC In port.

WHAT you will get



Image: Powering options for the Desview R7III monitor.

Your browser does not support the video tag.

Video: Demonstrates the setup and powering of the Desview R7III camera monitor, including battery installation and cable connections.

3. Connecting to a Camera

Use the appropriate HDMI cable (A to A or Micro HDMI) to connect your camera's HDMI output to the monitor's HDMI IN port. The monitor supports 4K60Hz signals.



Image: HDMI input and output connections for 4K video signals.

4. Mounting the Monitor

Attach the monitor to your camera rig or stand using the included monitor mount and 1/4" screw holes located on the monitor.

OPERATING INSTRUCTIONS

1. Power On/Off

Press and hold the Power On/Off Button located on the top of the monitor to turn it on or off. An indicator light will confirm the power status.

2. Touch Screen Interface

The 7-inch IPS touch screen allows for intuitive navigation and control of the monitor's functions. Swipe and tap to access menus and adjust settings.



Image: Touch screen interface with various monitoring tool icons.

3. Advanced Monitoring Tools

Access a suite of professional monitoring tools to assist with exposure, focus, and color accuracy:

- **Waveform:** Visualizes the luminance and chrominance levels of your video signal.
- **Histogram:** Displays the distribution of tones in your image.
- **Vectorscope:** Shows the color information of your video signal.
- **False Color:** Helps evaluate exposure by displaying different exposure levels as distinct colors.
- **Peaking:** Highlights in-focus areas for precise focusing.
- **Zebra:** Indicates overexposed areas with zebra stripes.
- Other tools include Single Color, Brightness Histogram, RGB Histogram, Luminance Waveform, All Wave, Audio Meters, Image Flip, Mark Ratio, Center Mark, Safe Area, Pixel to Pixel, HV Delay, Battery Notification, Grid Lines, Aspect Ratio, Zoom, and Color Temperature.

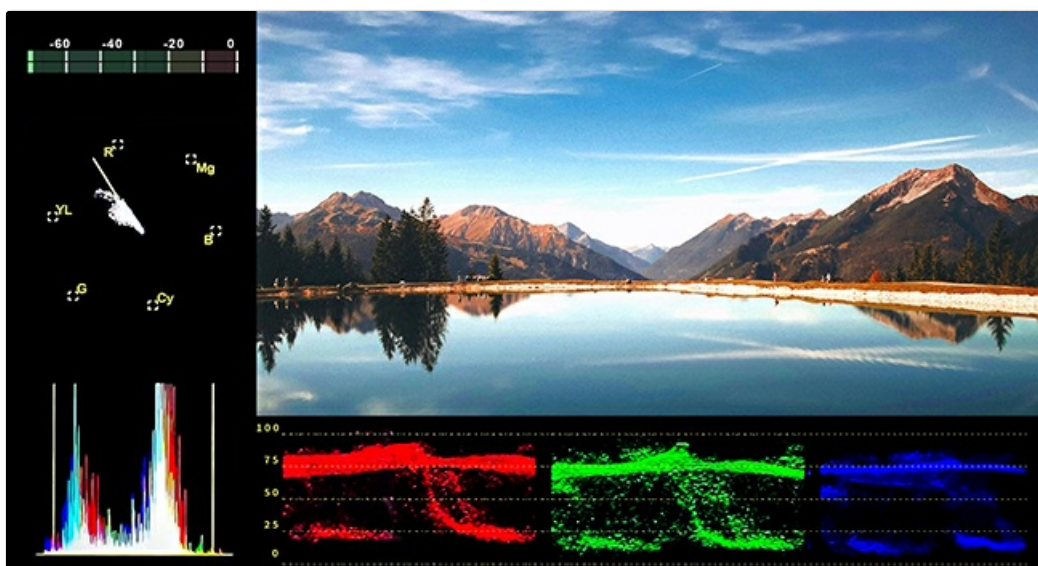


Image: Vectorscope, Waveform, and Histogram displays for video analysis.

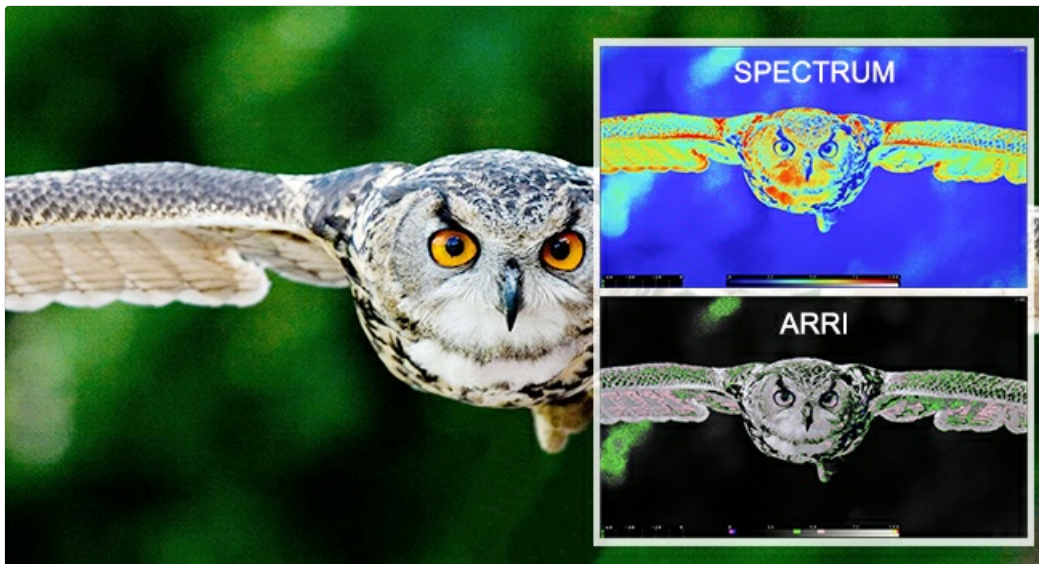


Image: False Color and Peaking functions for exposure and focus assist.

Your browser does not support the video tag.

Video: Demonstrates the various monitoring tools and touch screen functionality of the Desview R7III Camera Field Monitor in an outdoor setting.

4. 3D LUT Customization

The monitor supports built-in 3D LUTs and allows you to import custom LUTs via the provided USB flash drive. This enables quick changes between creative styles and color grading profiles.

Customize 3D LUT

Allows custom import of multiple LUT sets, enabling your to easily change between creative styles



Image: 3D LUT customization menu on the Desview R7III monitor.



Image: LUT-USB customization feature.

5. Brightness and HDR Monitoring

The 2800 nits ultra-high brightness ensures excellent visibility outdoors. The monitor also supports Dynamic

HDR Monitoring with switchable HDR PQ and HLG curves.

2800 Nits Ultra High Brightness

With 2800nit disply, it delivers clear visuals even in outdoor environment with strong light



Image: 2800 nits ultra-high brightness for outdoor use.

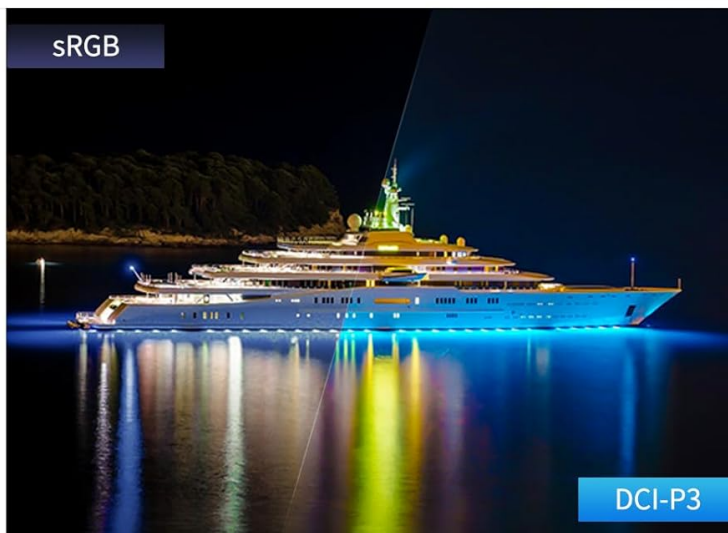
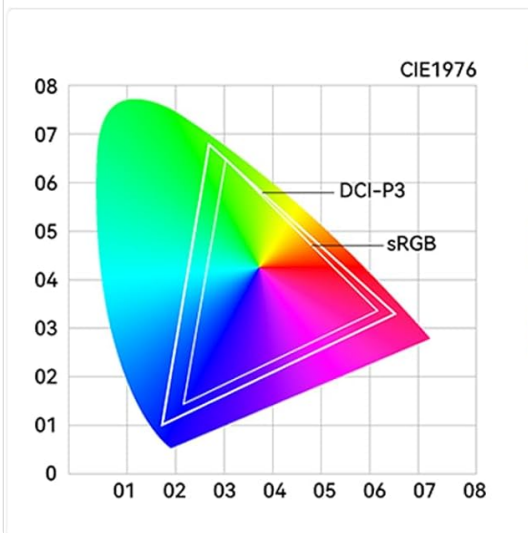
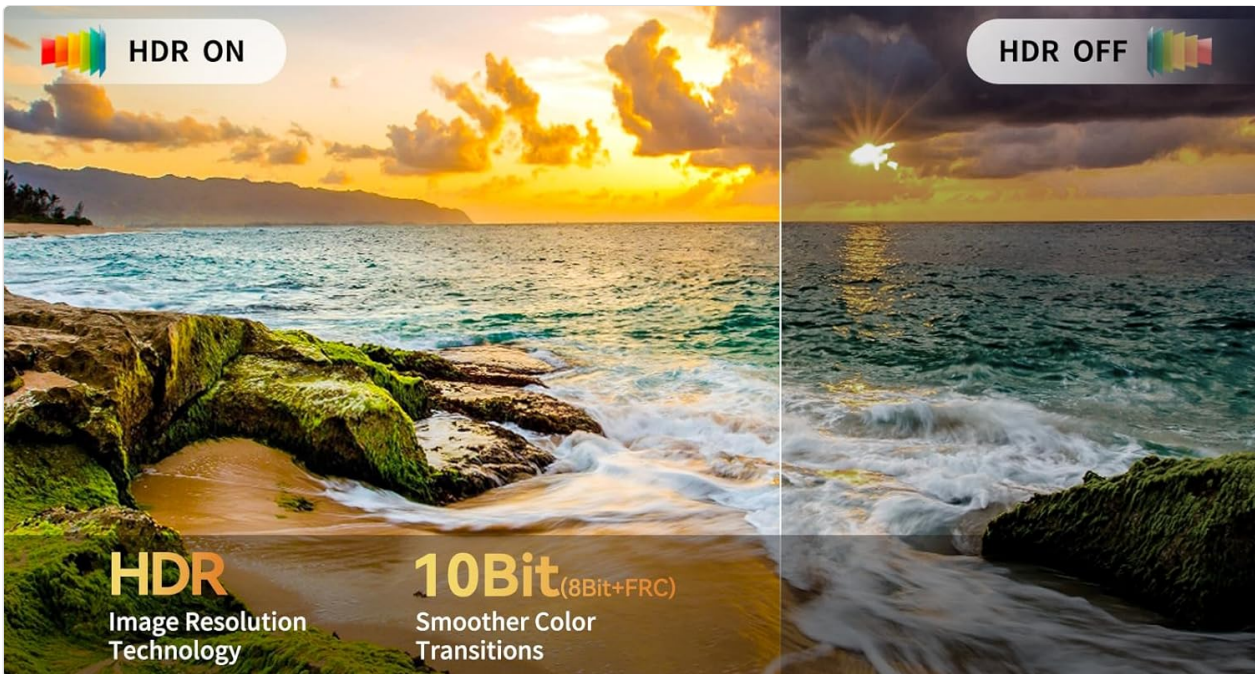


Image: HDR Image Resolution Technology and 10-bit color transitions.

Your browser does not support the video tag.

Video: Highlights the 2800 nits brightness and various features of the Desview R7III Camera Field Monitor, including its touch screen and monitoring tools.

MAINTENANCE

1. Cleaning

Use the provided dust cloth to gently clean the screen and body of the monitor. For stubborn smudges, use a soft, lint-free cloth lightly dampened with a screen-safe cleaning solution. Avoid harsh chemicals or abrasive materials.

2. Protection

The monitor is equipped with shock-proof rubber corners for enhanced durability. While these provide protection against drops, always handle the monitor with care to prevent damage. Store the monitor in its portable bag when not in use.

Shock-proof Rubber Corners

Featuring new rubber corner design for improved shock absorption and collision prevention



Image: Shock-proof rubber corners for enhanced durability.

TROUBLESHOOTING

- **No Power:** Ensure batteries are charged and correctly inserted, or that the power adapter is securely connected to a working outlet. Check the indicator light.
- **No Signal:** Verify that the HDMI cable is securely connected to both the camera's output and the monitor's HDMI IN port. Confirm the camera's video output settings are correct and active.
- **Image Issues (e.g., flickering, distortion):** Check the HDMI cable for damage. Try a different cable or input source if possible. Ensure the monitor's resolution and frame rate settings match the camera's output.
- **Touch Screen Unresponsive:** Restart the monitor. If the issue persists, ensure the screen is clean and free of debris.
- **Overheating:** Ensure proper ventilation around the monitor. Avoid direct sunlight for prolonged periods. The monitor has strong heat dissipation capabilities, but extreme conditions can still affect performance.

SPECIFICATIONS

Feature	Detail
Product Dimensions	2.06 x 7.56 x 4.61 inches
Item Weight	1.1 pounds
Item Model Number	Desview-R7II
Manufacturer	Desview
Display Size	7-inch IPS
Resolution	1920x1080 Full HD
Brightness	2800 nits
HDMI Support	Up to 4K60Hz (3840x2160p@60Hz, 4096x2160p@60Hz)
Power Input	NP-F Battery, Type-C (5V/3A), DC Input

WARRANTY AND SUPPORT

For warranty information, technical support, or service inquiries, please refer to the official Desview website or contact their customer service directly. Keep your purchase receipt as proof of purchase.