

## EENOUR F2000

# EENOUR F2000 Portable Power Station User Manual

Model: F2000

## 1. PRODUCT OVERVIEW

The EENOUR F2000 is a high-capacity portable power station designed for various applications, including emergency backup, outdoor activities, and off-grid power solutions. It features a durable LiFePO4 battery, multiple output ports, and fast charging capabilities.



Image 1: EENOUR F2000 Portable Power Station. This image displays the main unit of the EENOUR F2000 portable power station, highlighting its various ports and digital display.

## Key Features:

- **Expandable Capacity:** Base capacity of 2048Wh, expandable up to 16384Wh with additional batteries.
- **Rapid Charging:** Achieves full charge in approximately 1 hour using dual AC and solar input.
- **High Power Output:** Provides up to 2900W (E-Multiply mode) for various appliances.
- **Versatile Outputs:** 15 output ports including AC, USB-A, QC3.0, Type-C (PD100W), DC, cigarette lighter, and 24V aviation socket.
- **UPS Functionality:** Uninterruptible Power Supply with 0.01-second automatic switchover during power outages.
- **Long-Life Battery:** Utilizes LiFePO4 battery technology for extended durability (approx. 10 years of daily use).
- **Safety Features:** Equipped with a Battery Management System (BMS) for protection against overcharge, over-discharge, overheat, short-circuit, and overload.

## 2. SETUP

## Unpacking and Initial Inspection:

1. Carefully remove the power station and all accessories from the packaging.
2. Verify that all components listed in the packing list are present and undamaged.
3. Retain the packaging for future storage or transport.

## Initial Charging:

Before first use, fully charge the EENOUR F2000. This ensures optimal battery performance and calibration.

- Connect the power station to a standard AC wall outlet using the provided AC charging cable.
- The display will indicate charging status. A full charge typically takes approximately 1 hour.
- Alternatively, connect compatible solar panels (sold separately) for solar charging.



Image 2: EENOUR F2000 charging via solar panel. This image shows the power station connected to a solar panel, demonstrating its solar charging capability.

### 3. OPERATING INSTRUCTIONS

---

#### Powering On/Off:

- To power on, press and hold the main power button for a few seconds until the display illuminates.
- To power off, press and hold the main power button until the display turns off.

#### Using Output Ports:

The EENOUR F2000 offers various output ports for different devices:

- **AC Outlets (100V):** Press the AC power button to activate. Connect household appliances up to 2900W (in E-Multiply mode).
- **USB Ports (USB-A, QC3.0, Type-C PD100W):** These ports are typically active when the unit is on. Connect smartphones, tablets, laptops, and other USB-powered devices.
- **DC Ports (12V, 24V Aviation Socket, Cigarette Lighter):** Press the DC power button to activate. Suitable for car accessories, portable refrigerators, and other DC-powered devices.



# 業界最速の充電速度が1時間で満充電

従来品と比べるとAC1500WとPV1000Wのデュアル入力による  
高速充電で大容量ながら僅か1時間で空の状態から満充電が可能です。  
急な出発でも充電が間に会えて安心！

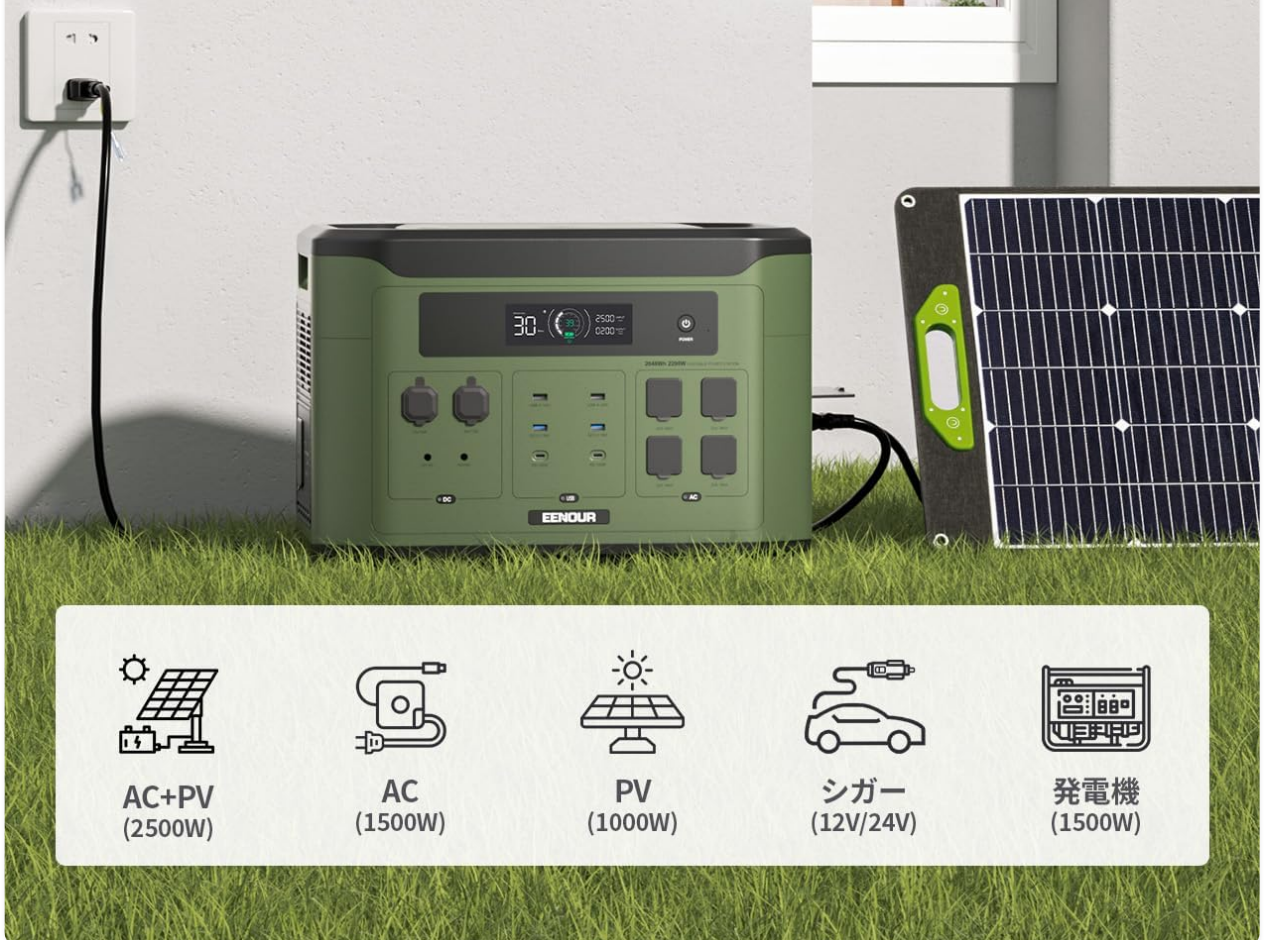


Image 3: EENOUR F2000 with multiple devices connected. This image illustrates the versatility of the power station, showing various devices plugged into its numerous output ports.

## E-Multiply Mode:

For high-power appliances exceeding the standard AC output, activate E-Multiply mode to achieve up to 2900W output. Refer to the display for mode activation and status.

## UPS (Uninterruptible Power Supply) Function:

The F2000 can act as a UPS. Connect the power station to an AC input and your critical devices to the AC output ports. In case of a power outage, the unit will automatically switch to battery power within 0.01 seconds, ensuring continuous operation for connected devices like refrigerators, medical equipment, or computers.



Image 4: EENOUR F2000 demonstrating UPS functionality. This image shows the power station providing backup power to a computer setup, highlighting its role as an uninterruptible power supply.

### Capacity Expansion:

The F2000's capacity can be expanded by connecting up to 7 EENOUR X2000 extra batteries (sold separately) using dedicated extension cables (sold separately). This allows for a maximum capacity of 16384Wh.

# 0.01秒で無停電なく切替わるUPS装置

充給電を同時にできるパススルー機能は勿論、停電時でも自動的に給電可能なUPS装置も搭載します。留守中は冷蔵庫や水槽、防災監視装置の電源が全然心配なし！



Image 5: EENOUR F2000 connected to an expansion battery. This image shows the main power station stacked with an additional battery unit, illustrating its expandable capacity feature.

## 4. MAINTENANCE

### Battery Care:

The EENOUR F2000 uses a LiFePO4 battery, known for its long lifespan (approximately 10 years with daily use). To maximize battery life:



- Avoid extreme temperatures. Store the unit in a cool, dry place.
- If storing for extended periods, charge the unit to approximately 50-80% every 3-6 months.
- Do not fully discharge the battery frequently, as this can reduce its overall lifespan.

### General Cleaning:

- Wipe the exterior with a soft, dry cloth.
- Do not use abrasive cleaners or solvents.
- Keep ventilation openings clear of dust and debris.

## 5. TROUBLESHOOTING

---

### Common Issues and Solutions:

- **Unit does not power on:**

If the power button was pressed on/off in short intervals, the unit may not start. Wait at least 15 seconds between power cycles. To reset the unit, press and hold the main power button for over 1 minute.

- **Solar charging is not working or input is low:**

Ensure all solar panel cables are securely connected. If the input amount is consistently low, try disconnecting and reconnecting the solar cables. The unit requires a minimum input of 40W to initiate solar charging. If using solar panels with voltage below 20V, the input may be unstable. Consider using panels with higher voltage or connecting multiple low-voltage panels in series to achieve a higher, more stable voltage (e.g., 40V). Verify the correct polarity of the XT60I connector; the center terminal should be positive.

- **AC output not working:**

Ensure the AC power button is pressed and the AC indicator on the display is lit. Check if the connected appliance exceeds the maximum output capacity (2900W in E-Multiply mode).

- **Display not showing correct information:**

Refer to the LCD display guide below for understanding indicators. If issues persist, try restarting the unit.



# 多出力で15台機器を同時に利用可能

AC x 5、USB-A x 2、QC3.0 x 2、Type-C(PD100W) x 2、DC x 2、シガーソケット x 1、24V航空ソケット x 1が計15口を搭載することで、電化製品や電子機器を複数台で稼働可能!



Image 6: EENOUR F2000 LCD display guide. This diagram labels and explains each icon and numerical indicator on the power station's LCD screen, aiding users in monitoring its status.

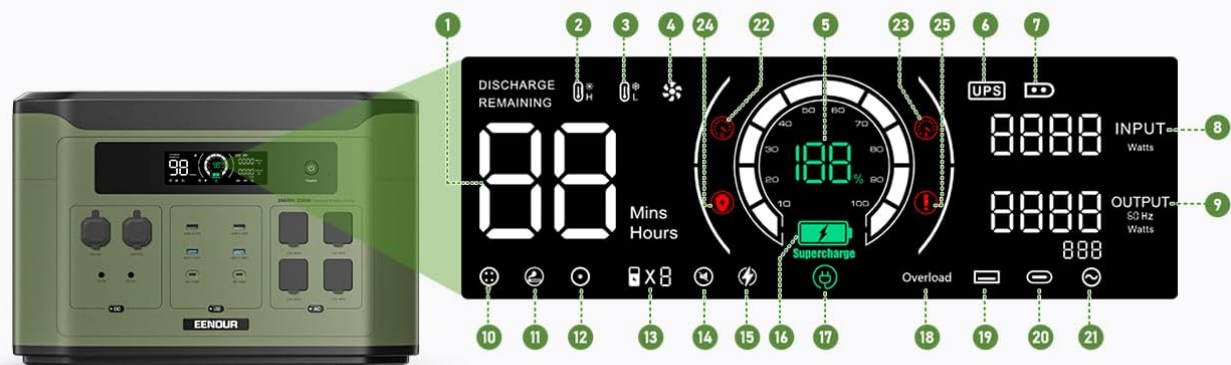
## 6. SPECIFICATIONS

Feature	Specification
Brand	EENOUR
Model Number	F2000-JP

Feature	Specification
Battery Type	LiFePO4 (Lithium Iron Phosphate)
Battery Capacity	2048Wh / 640000mAh
Expandable Capacity	Up to 16384Wh (with 7 X2000 extra batteries)
AC Output	100V, 2900W (E-Multiply Mode)
Charging Time (AC + Solar)	Approx. 1 hour
Input Voltage	100 Volts (AC)
Output Ports	5x AC, 2x USB-A, 2x QC3.0, 2x Type-C (PD100W), 2x DC, 1x Cigarette Lighter, 1x 24V Aviation Socket (Total 15)
UPS Function	Yes, 0.01s switchover
Dimensions	58 x 42.5 x 41 cm
Weight	23.6 kg
Color	Green
Certification	Recommended Disaster Preparedness Product

# 大きいLCD画面と初心者の方にも向け

バッテリー残量や入出力のワット数、充電・放電の残り時間目安など、各種情報がカラーで綺麗に表示して使用状況は初心者の方でもチェックしやすく、使い勝手は凄く便利!



1. 充放電の残り時間

2. 高温保護

3. 低温保護

4. 冷却ファン

5. 残量表示

6. UPSモード

7. PV/シガー充電

8. 入力電力

9. 出力電力

10. 24V航空ソケット出力

11. 12Vシガーソケット出力

12. 12V DC5521出力

13. 接続しているバッテリー台数

14. 静音モード

(キータッチトーンの消し)

15. 定電力モード

16. AC急速充電モード

17. AC充電

18. 過負荷保護

19. USB-A出力

20. USB-C出力

21. AC出力

22. 過電圧保護

23. 過電流保護

24. 短絡保護

25. バッテリーパック故障

Image 7: EENOUR F2000 dimensions. This image provides a visual representation of the power station's physical dimensions in centimeters.

## 7. WARRANTY AND SUPPORT

EENOUR products are designed for durability and reliability. The F2000 Portable Power Station is equipped with a robust Battery Management System (BMS) for enhanced safety and longevity.

### Product Liability (PL) Insurance:





This product is covered by Product Liability (PL) insurance, ensuring peace of mind regarding product safety and quality.

Customer Support:

For any questions, technical assistance, or warranty claims, please contact EENOUR customer support. Our support team is dedicated to providing prompt and helpful assistance. Contact information can typically be found on the official EENOUR website or through your purchase platform.

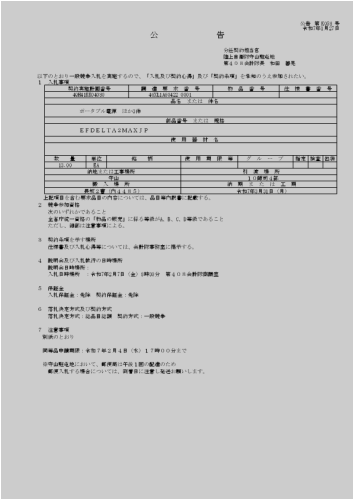
© 2025 EENOUR. All rights reserved.

Related Documents - F2000

<div><p>Portable Power Station ポータブル電源</p><p>P2001 User Manual 取扱説明書</p><p><small>Please read this manual before use and follow its guidelines. Keep this manual for future reference.</small></p></div>	<p><a href="#">EENOUR P2001 Portable Power Station User Manual</a></p> <p>Comprehensive user manual for the EENOUR P2001 Portable Power Station, detailing its features, specifications, operation, safety instructions, troubleshooting, and maintenance.</p>
<div><p>ポータブル電源 Smart Expansion Battery</p><p>X2000 User Manual 取扱説明書</p></div>	<p><a href="#">EENOUR X2000 Smart Expansion Battery User Manual</a></p> <p>User manual for the EENOUR X2000 Smart Expansion Battery, detailing its specifications, features, operation, charging methods, expansion capabilities, troubleshooting, and maintenance.</p>
<div><p>Solar Panel 400W</p><p>Model: UB-400 User Manual</p><p><small>Please read this manual before use and follow its guidelines. Keep this manual for future reference.</small></p></div>	<p><a href="#">EENOUR UB-400 Solar Panel 400W User Manual</a></p> <p>User manual for the EENOUR UB-400 Solar Panel 400W, providing installation instructions, usage tips, technical specifications, and warranty information.</p>
<div><p>Two Station Tumbler Mug Press</p><p>User Manual</p><p><small>Model: CH2244 Please read this manual before use and follow its guidelines. Keep this manual for future reference.</small></p></div>	<p><a href="#">EENOUR CH2244 Two Station Tumbler Mug Press User Manual</a></p> <p>User manual for the EENOUR CH2244 Two Station Tumbler Mug Press, providing detailed instructions on setup, operation, safety precautions, troubleshooting, and warranty information for sublimation printing on tumblers.</p>







[pdf]

DABBSSON DBS2300Plus EENOUR F2000 AnkerSolixPS400PortableSolarPanel AFERIY AF S400A1 DABBSSON 420W UB 400ko065165mod go jp gsdf mae mafin k ko065165 ||| K058 7127 4QH41KK04080 46XL1A60422 0001 3 13.00 EA ... coFlow SOLAR400W EA 3 Anker767PortablePowerStationAFERIY AF-P210 DABBSSON DBS2300Plus EENOUR **F2000** AnkerSolixPS400PortableSolarPanelAFERIY AF-S400A1 DABBSSON 420W EENOUR UB-400 7331 ...

lang:i-klinton **score:31** filesize: 383.9 K page\_count: 5 document date: 2025-01-27



[pdf] User Manual Specifications

EENOUR X2000 JA 20241025 v 1729822495 cdn shopify s files 1 0831 5420 7018 ||| Smart Expansion Battery X2000 User Manual 1-9 10-17 SPECIFICATIONS Model Battery Type Capac ... ng XT60 77 8.BY 7 7 95 7 8 MPPT Control System .BYJNVN1PXFS1PJOU5SBDLJOH Recharging with **F2000**/F4000 Cycle Life ZDMFT Discharging 14\_104 /-10\_40 Temperature 68\_86 Recommended Chargin... lang:en **score:27** filesize: 3.88 M page\_count: 20 document date: 2024-10-25



[pdf] User Manual

F2000 20230608 2 User Manual EENOUR F2000 Portable Power Station Home Kitchen C1P231 OkQL m media amazon images I ||| . . . . . lang:en **score:22** filesize: 7.64 M page\_count: 36 document date: 2023-07-14

