

## LcFun B0BYJ3NSWR

# LcFun USB Rechargeable Electric Lighter

Model: B0BYJ3NSWR

Brand: LcFun

## 1. INTRODUCTION

Thank you for choosing the LcFun USB Rechargeable Electric Lighter. This instruction manual provides important information on the safe and effective use of your new device. Designed for durability and versatility, this lighter features a windproof plasma dual arc, waterproof construction, a battery display, and a built-in flashlight, making it ideal for outdoor activities, camping, hiking, and survival kits.

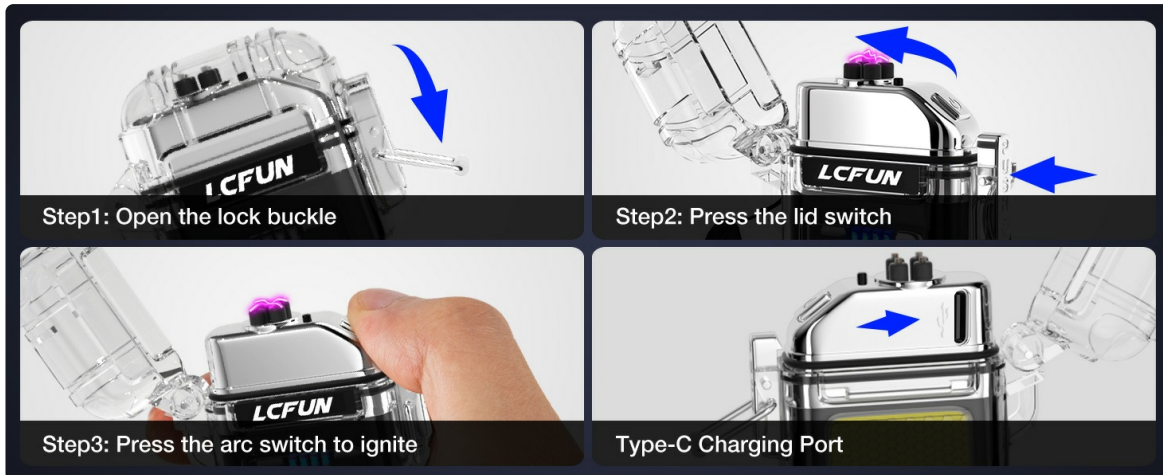


Image: The LcFun Electric Lighter shown in an outdoor environment, highlighting its suitability for various activities.

## 2. SAFETY INFORMATION

- **WARNING:** Do not use this lighter with metal products.
- Keep out of reach of children. This product is not a toy.
- Do not touch the electric arc directly, as it can cause burns.
- Do not expose to extreme temperatures (above 50°C / 122°F) or direct sunlight for prolonged

periods.

- Do not puncture or incinerate the lighter.
- Ensure the lid is securely latched to maintain waterproof integrity.
- Use only the provided USB cable for charging.

### 3. PRODUCT OVERVIEW AND FEATURES

---

The LcFun Electric Lighter is engineered for reliability in challenging conditions, offering multiple functionalities beyond simple ignition.

- **Waterproof and Windproof:** Features an IP56 waterproof system, ensuring functionality in strong winds or stormy weather. Ideal for survival, camping, hiking, fishing, and hunting.
- **USB Rechargeable:** Equipped with a built-in 300 mAh lithium battery, providing over 40 uses on a single charge. Conveniently charges via USB.
- **LED Battery Indicator:** Real-time battery power display with indicator lights. Flashes during charging, and all 4 LEDs illuminate when fully charged.
- **Color-Changing LED Strip Light:** The side of the lighter features an LED strip light with three color transformations.
- **3 Modes COB Flashlight:** Includes High light, Low light, and Strobe modes. Activate by closing the lighter's lid and pressing the side button.
- **Compact and Lightweight:** Designed for portability, making it a great addition to bug-out bags, go bags, and backpacking gear. Comes with two paracord lanyards.

# **IP56**

**Waterproof**



Image: The lighter submerged in water, showcasing its IP56 waterproof design.

# LED Battery Indicator

Charging Time  $\leq$  2.0 hours



Image: The lighter connected to a USB port, displaying its LED battery indicator during charging.

# 3 Modes COB Flashlight



30 high-performance COB wicks

Rhombic lens for brightening and uniform light



Image: The lighter's COB flashlight in action, illustrating its three distinct lighting modes.

## Compact & Lightweight

Weight: 2.25oz/64g



Image: Product dimensions are shown, emphasizing the lighter's compact and lightweight nature.

## 4. SETUP

---

### 4.1 Charging the Lighter

1. Locate the USB-C charging port on the lighter.
2. Connect the provided USB cable to the lighter and to a compatible USB power source (e.g., computer, power bank, car charger).
3. The LED battery indicator lights will flash to show charging progress.
4. Once all 4 LED lights are steadily on, the lighter is fully charged. Charging typically takes approximately 2.0 hours.



Image: The lighter being charged via its USB-C port, illustrating the charging process.

## 5. OPERATING INSTRUCTIONS

### 5.1 Using the Electric Lighter

1. To access the arc, first open the lock buckle on the side of the lighter.
2. Press the lid switch to open the top cover.
3. Press the arc switch button to activate the plasma dual arc for ignition. The arc will automatically shut off after 7 seconds for safety.



Image: Close-up of the LcFun Electric Lighter's dual arc, demonstrating its powerful ignition.

### 5.2 Using the COB Flashlight

1. Ensure the lighter's lid is closed.
2. Press the side button to cycle through the three flashlight modes: High light, Low light, and Strobe.
3. Press the button again to turn off the flashlight.

Your browser does not support the video tag.

Video: Demonstration of the LcFun Electric Lighter's 3-mode COB flashlight, cycling through High, Low, and Strobe settings.

## 6. MAINTENANCE

---

- Clean the arc electrodes regularly with a soft, dry cloth to ensure optimal performance.
- Keep the lighter free from dust and debris.
- No fuel is required for this electric lighter.
- Store in a cool, dry place when not in use.

## 7. TROUBLESHOOTING

---

- **Lighter not activating:** Ensure the lid is fully open and the arc switch is pressed firmly. Check battery level using the LED indicator and recharge if necessary.
- **Flashlight not working:** Ensure the lighter's lid is closed before attempting to activate the flashlight. Check battery level and recharge if needed.
- **Charging issues:** Verify that the USB cable is securely connected to both the lighter and the power source. Try a different USB port or cable if problems persist.

## 8. SPECIFICATIONS

---

Feature	Detail
Product Dimensions	2.48 x 1.57 x 0.7 inches
Item Weight	3.17 ounces
Batteries	1 Lithium Ion battery (included)
Brand	LcFun
Material	Metal
Fuel Type	Electric
Waterproof Rating	IP56

## 9. WARRANTY AND SUPPORT

---

Your LcFun Electric Lighter comes with a 90-day hassle-free warranty. If you encounter any issues or require assistance, please do not hesitate to contact us. We are always here to help and ensure your satisfaction.

